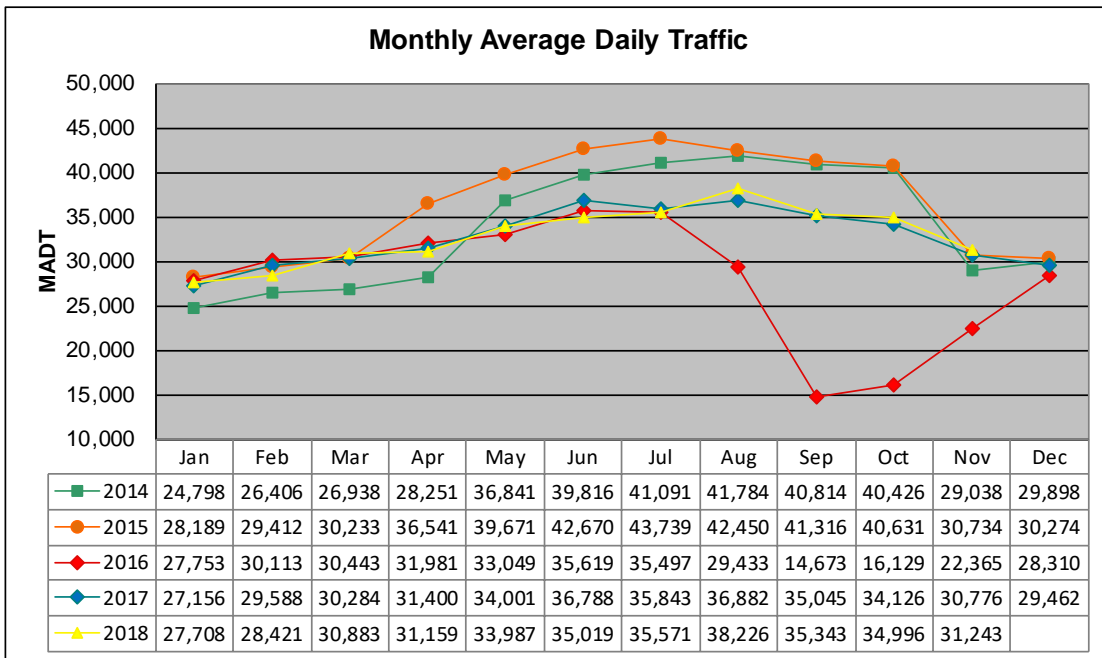


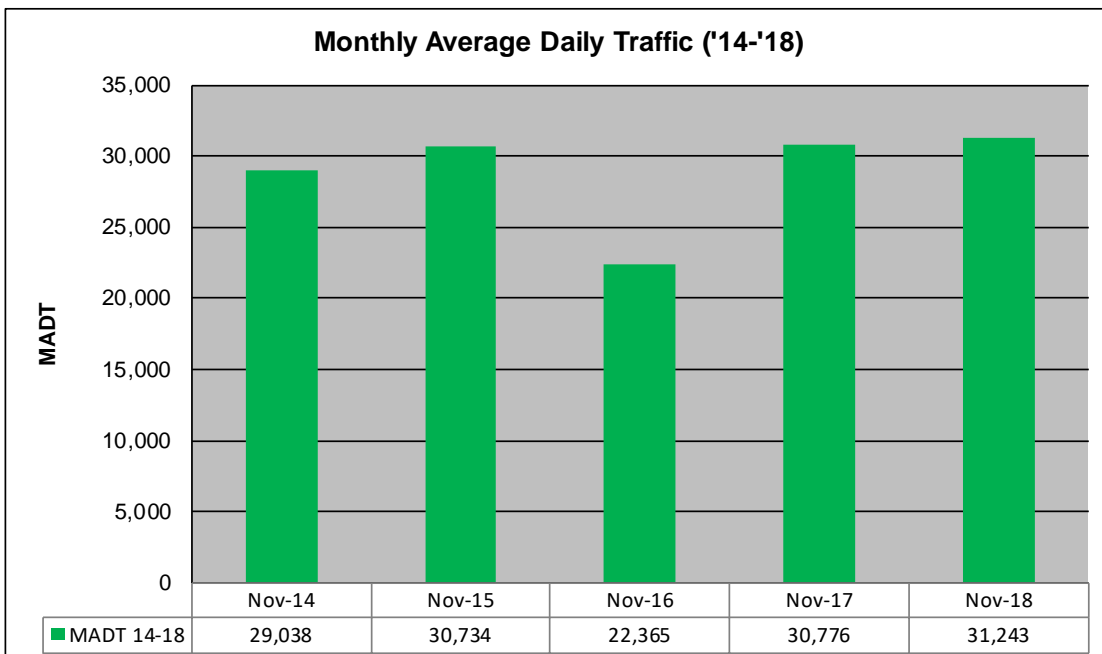
MONTHLY REPORT, STATION NO. 38 (WIM)

NOVEMBER 2018

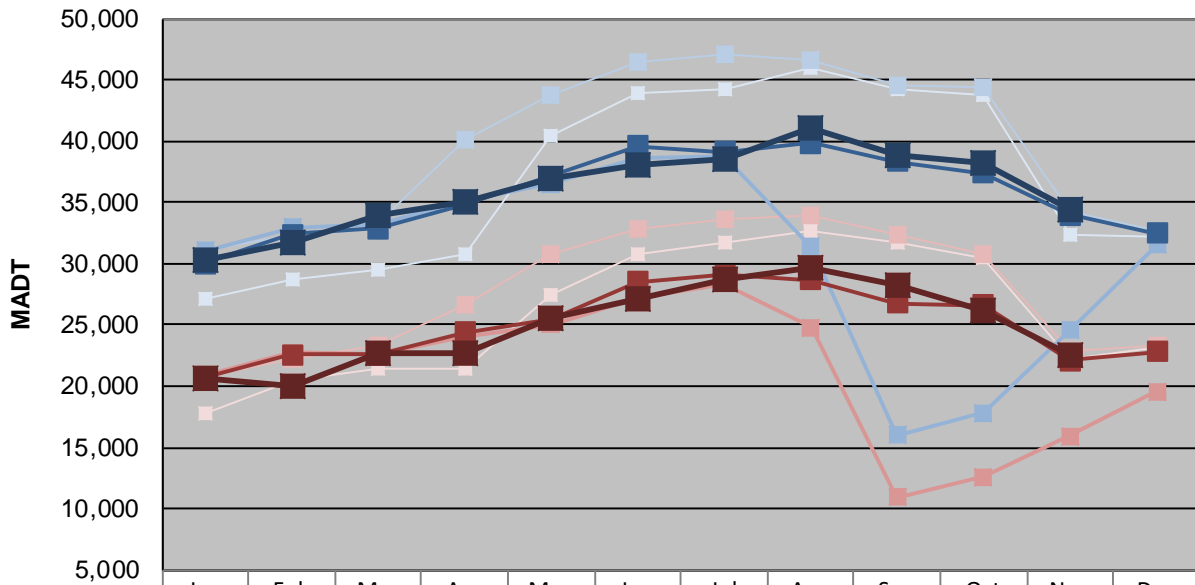
| | | |
|---|----------------------|-------------------------------------|
| Station Measurement: VOLUME/SPEED/CLASS/WEIGHT | | |
| Route: I-535 | Route Direction: N/S | Lanes: 4 |
| County: St Louis | Closest City: Duluth | |
| Functional Class: Urban Principal Arterial - Interstate | | |
| Location: SW OF MSAS149 (GARFIELD AVE) IN DULUTH | | |
| Ref Post: 001+00.053 | True Mile: 1.053 | Sequence No. 9823 |
| Volume: 937,276 | | MADT: 31,243 |
| Weekday (M-F) MADT: 34,403 | | Weekend (Sa-Su) MADT: 22,551 |



Note: Decrease in traffic August to November 2016 due to construction on I-535... Increase in traffic May to September 2014 and April to October 2015 due to detour from I-35



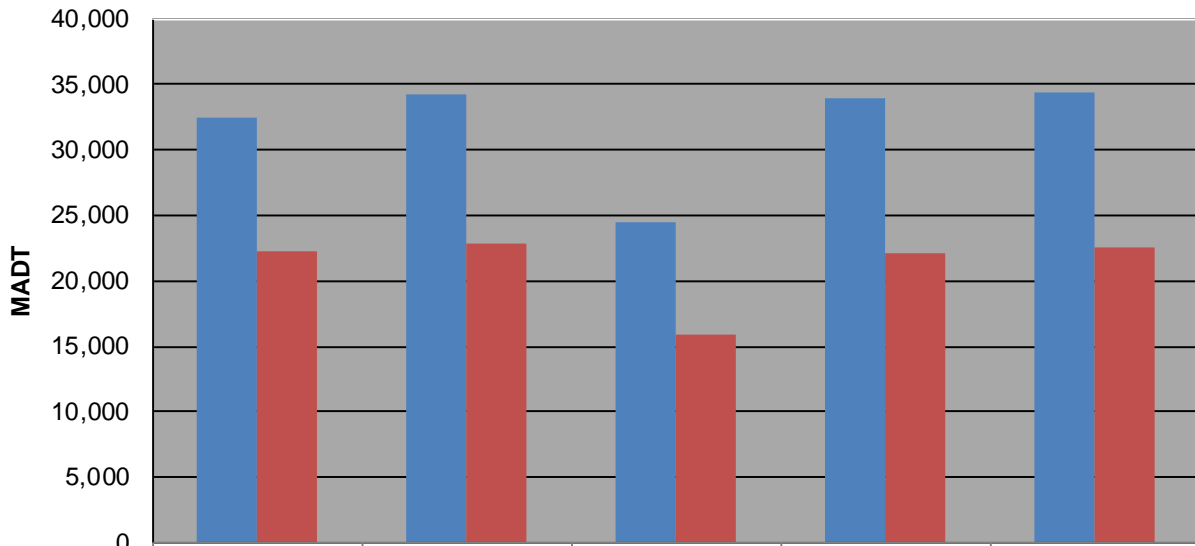
Weekday (WD)/Weekend (WE) Monthly Average Daily Traffic



| | Jan | Feb | Mar | Apr | May | Jun | Jul | Aug | Sep | Oct | Nov | Dec |
|--------|--------|--------|--------|--------|--------|--------|--------|--------|--------|--------|--------|--------|
| '14 WD | 27,156 | 28,780 | 29,558 | 30,716 | 40,404 | 43,894 | 44,280 | 46,004 | 44,298 | 43,766 | 32,426 | 32,254 |
| '14 WE | 17,746 | 20,472 | 21,432 | 21,476 | 27,506 | 30,708 | 31,648 | 32,648 | 31,704 | 30,536 | 22,264 | 23,218 |
| '15 WD | 31,118 | 32,296 | 33,234 | 40,172 | 43,698 | 46,396 | 47,154 | 46,580 | 44,580 | 44,424 | 34,194 | 32,704 |
| '15 WE | 20,786 | 22,204 | 23,328 | 26,624 | 30,768 | 32,812 | 33,578 | 33,894 | 32,396 | 30,810 | 22,824 | 23,342 |
| '16 WD | 31,058 | 32,986 | 33,214 | 35,120 | 36,546 | 38,684 | 38,708 | 31,334 | 15,990 | 17,826 | 24,532 | 31,550 |
| '16 WE | 20,860 | 22,750 | 22,610 | 24,084 | 25,050 | 27,210 | 28,386 | 24,784 | 10,912 | 12,578 | 15,918 | 19,586 |
| '17 WD | 30,034 | 32,390 | 32,878 | 34,886 | 37,154 | 39,624 | 39,126 | 39,814 | 38,340 | 37,418 | 33,988 | 32,446 |
| '17 WE | 20,758 | 22,584 | 22,560 | 24,424 | 25,524 | 28,500 | 29,096 | 28,644 | 26,792 | 26,604 | 22,074 | 22,786 |
| '18 WD | 30,270 | 31,770 | 34,010 | 35,032 | 36,894 | 38,124 | 38,508 | 41,102 | 38,914 | 38,226 | 34,403 | |
| '18 WE | 20,594 | 20,048 | 22,662 | 22,778 | 25,492 | 27,174 | 28,664 | 29,640 | 28,204 | 26,194 | 22,551 | |

Note: 'Weekday' defined as Monday-Friday, 'Weekend' defined as Saturday-Sunday

Weekday/Weekend Monthly Average Daily Traffic ('14-'18)



| | Nov-14 | Nov-15 | Nov-16 | Nov-17 | Nov-18 |
|---------|--------|--------|--------|--------|--------|
| Weekday | 32,426 | 34,194 | 24,532 | 33,988 | 34,403 |
| Weekend | 22,264 | 22,824 | 15,918 | 22,074 | 22,551 |