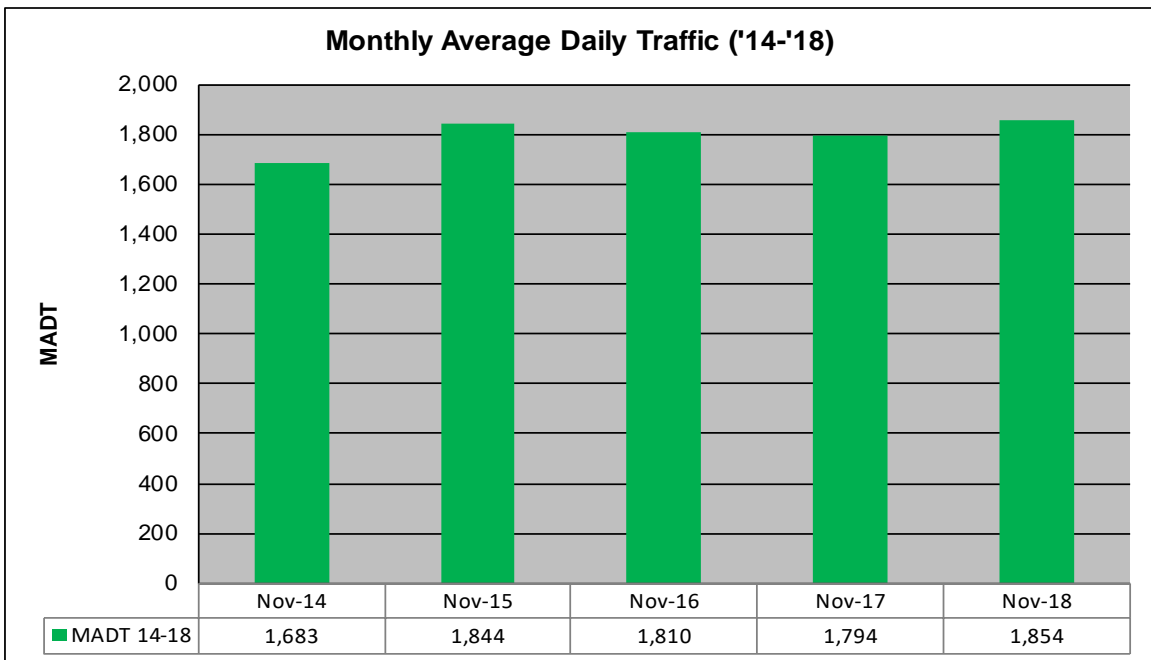
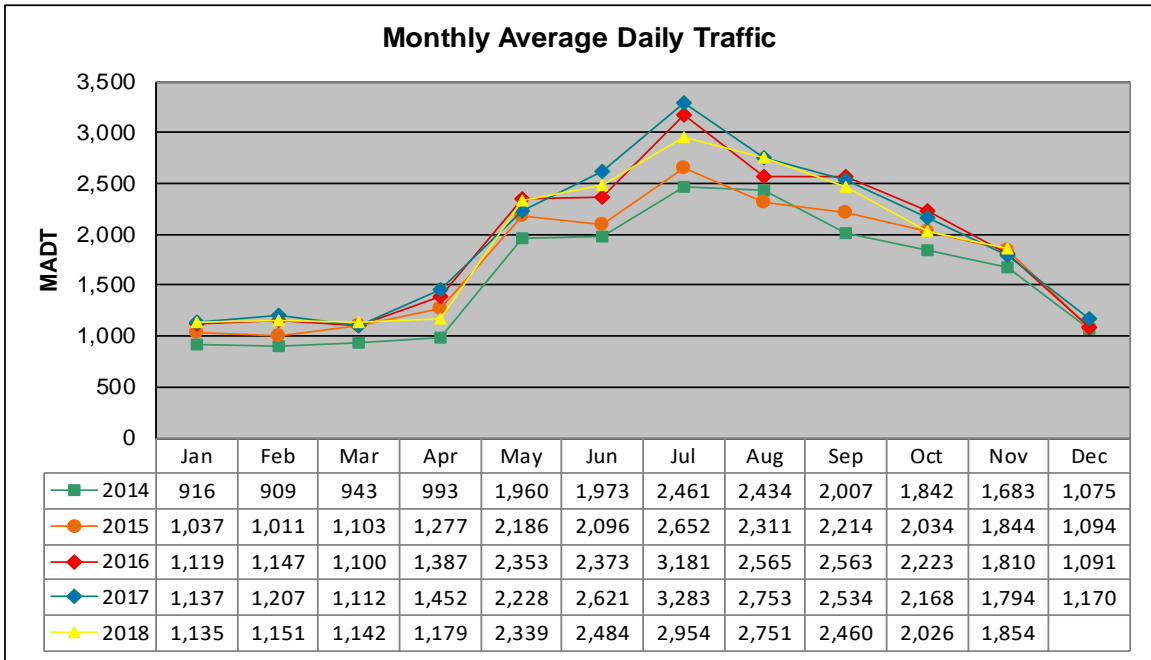


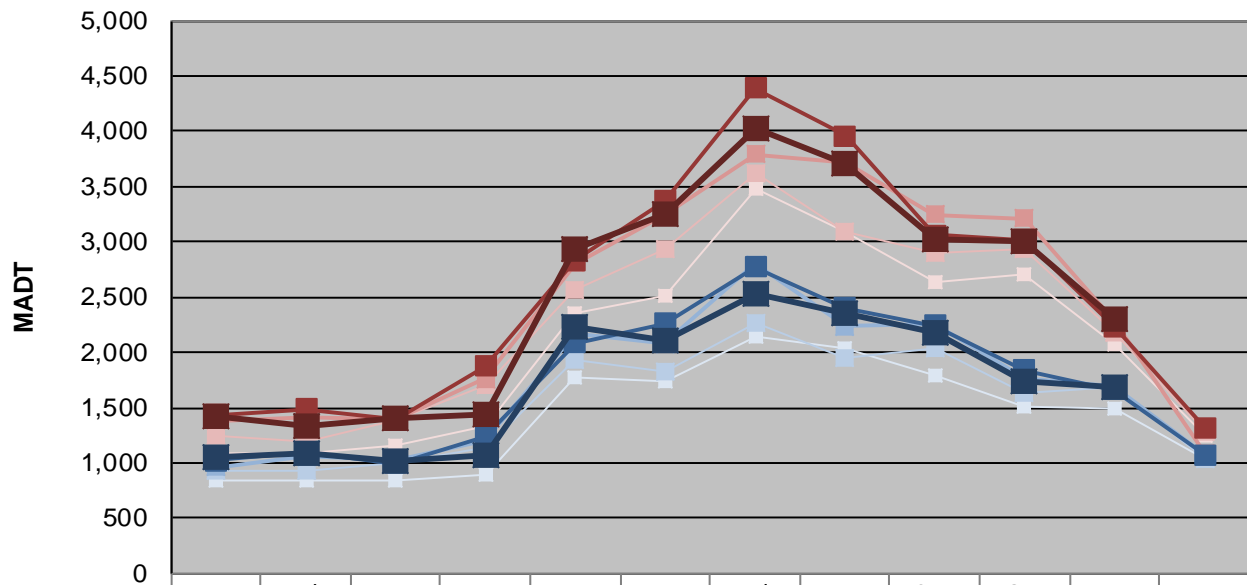
MONTHLY REPORT, STATION NO. 222 (ATR)

NOVEMBER 2018

Station Measurement: VOLUME/SPEED		
Route: TH 65	Route Direction: N/S	Lanes: 2
County: Aitkin	Closest City: McGrath	
Functional Class: Rural Minor Arterial		
Location: .6 MI N OF CSAH2, N OF MCGRATH		
Ref Post: 097+00.725	True Mile: 100.432	Sequence No. 6767
Volume: 55,630		MADT: 1,854
Weekday (M-F) MADT: 1,694		Weekend (Sa-Su) MADT: 2,296



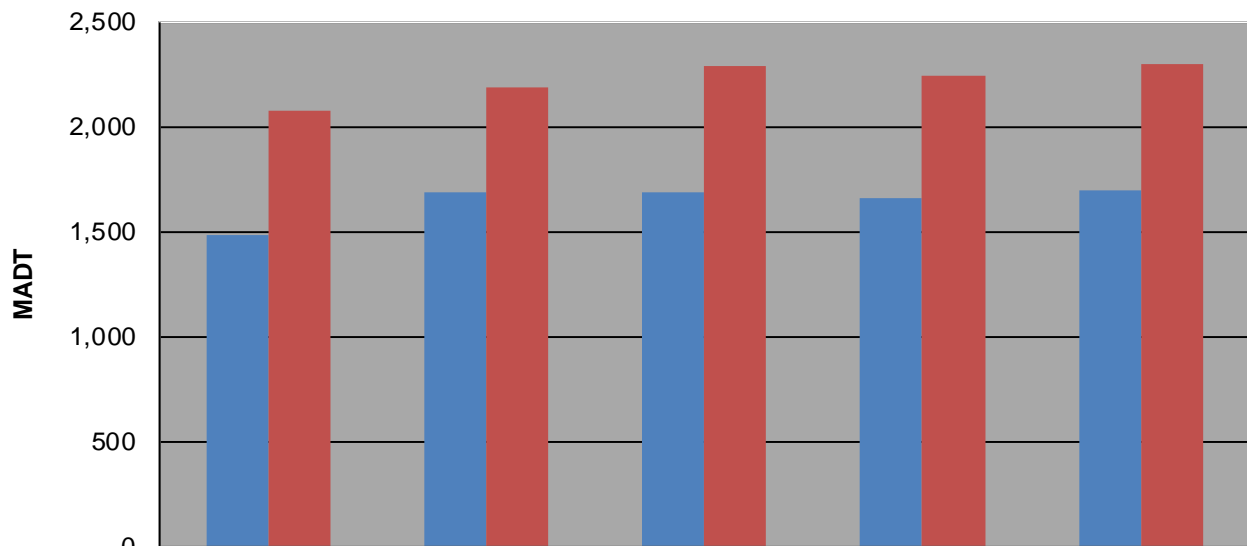
Weekday (WD)/Weekend (WE) Monthly Average Daily Traffic



	Jan	Feb	Mar	Apr	May	Jun	Jul	Aug	Sep	Oct	Nov	Dec
'14 WD	836	836	844	886	1,778	1,732	2,142	2,044	1,788	1,504	1,488	1,034
'14 WE	1,092	1,090	1,162	1,336	2,346	2,510	3,474	3,086	2,640	2,712	2,074	1,254
'15 WD	934	936	998	1,136	1,936	1,830	2,260	1,952	2,034	1,638	1,686	1,042
'15 WE	1,252	1,198	1,388	1,700	2,564	2,934	3,628	3,098	2,900	2,940	2,184	1,282
'16 WD	964	1,054	1,018	1,194	2,172	2,080	2,794	2,238	2,250	1,770	1,690	1,070
'16 WE	1,382	1,408	1,396	1,762	2,810	3,240	3,794	3,724	3,244	3,214	2,288	1,090
'17 WD	1,020	1,096	998	1,242	2,084	2,258	2,774	2,402	2,246	1,840	1,662	1,076
'17 WE	1,432	1,484	1,394	1,872	2,830	3,372	4,390	3,958	3,062	3,022	2,238	1,322
'18 WD	1,058	1,080	1,020	1,066	2,234	2,104	2,522	2,350	2,182	1,742	1,694	
'18 WE	1,424	1,334	1,396	1,440	2,940	3,246	4,026	3,714	3,016	3,010	2,296	

Note: 'Weekday' defined as Monday-Friday, 'Weekend' defined as Saturday-Sunday

Weekday/Weekend Monthly Average Daily Traffic ('14-'18)



	Nov-14	Nov-15	Nov-16	Nov-17	Nov-18
Weekday	1,488	1,686	1,690	1,662	1,694
Weekend	2,074	2,184	2,288	2,238	2,296