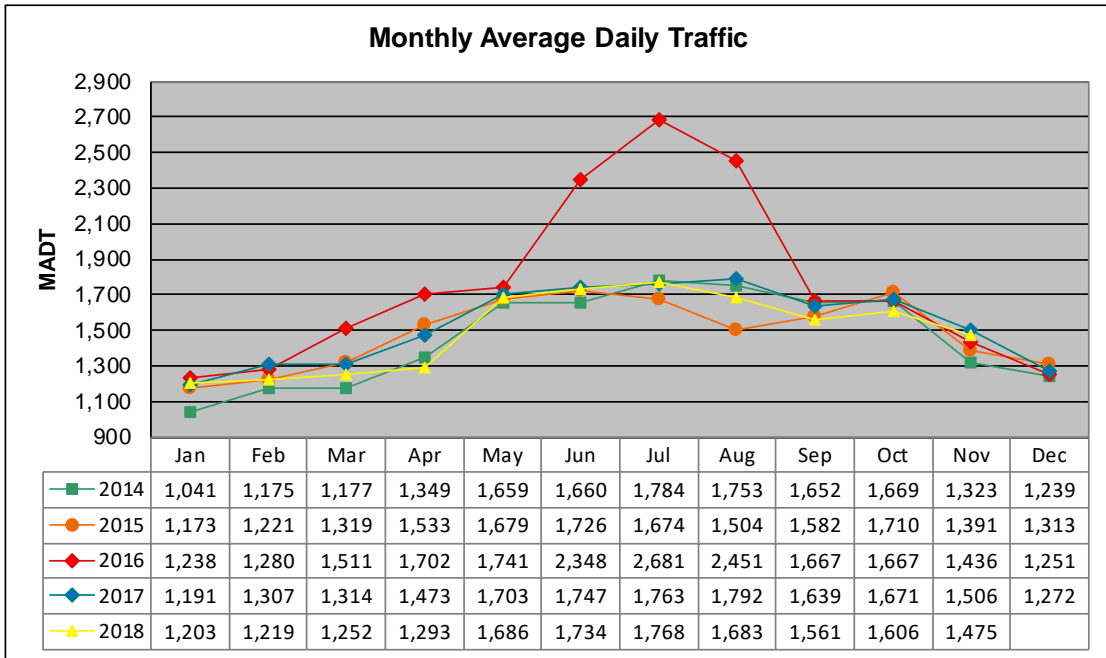


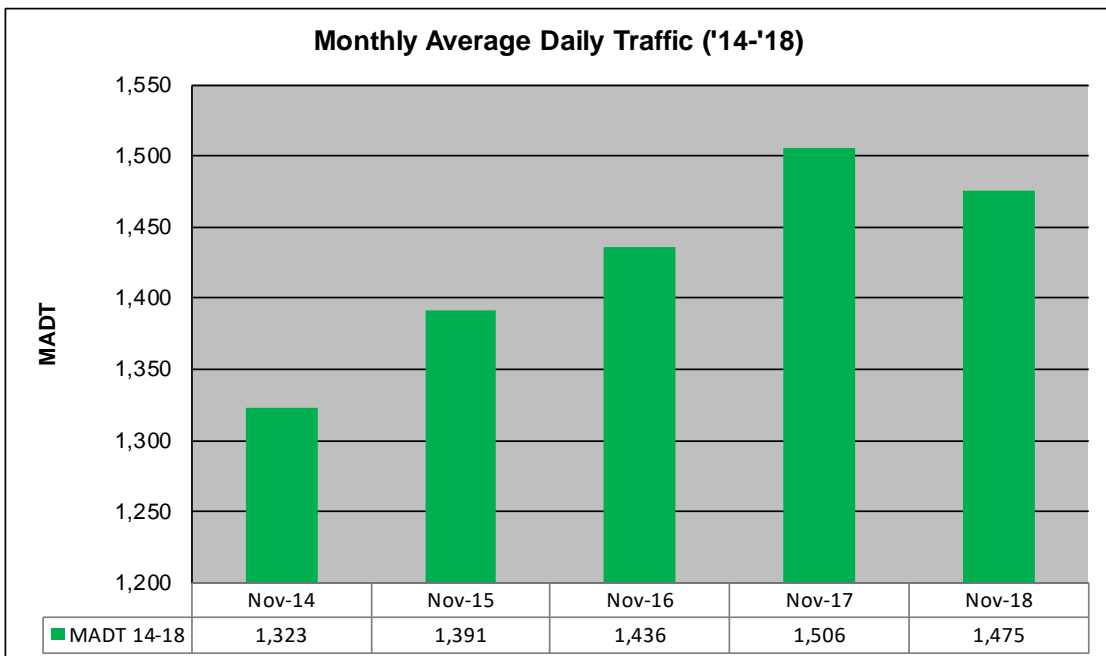
MONTHLY REPORT, STATION NO. 199 (ATR)

NOVEMBER 2018

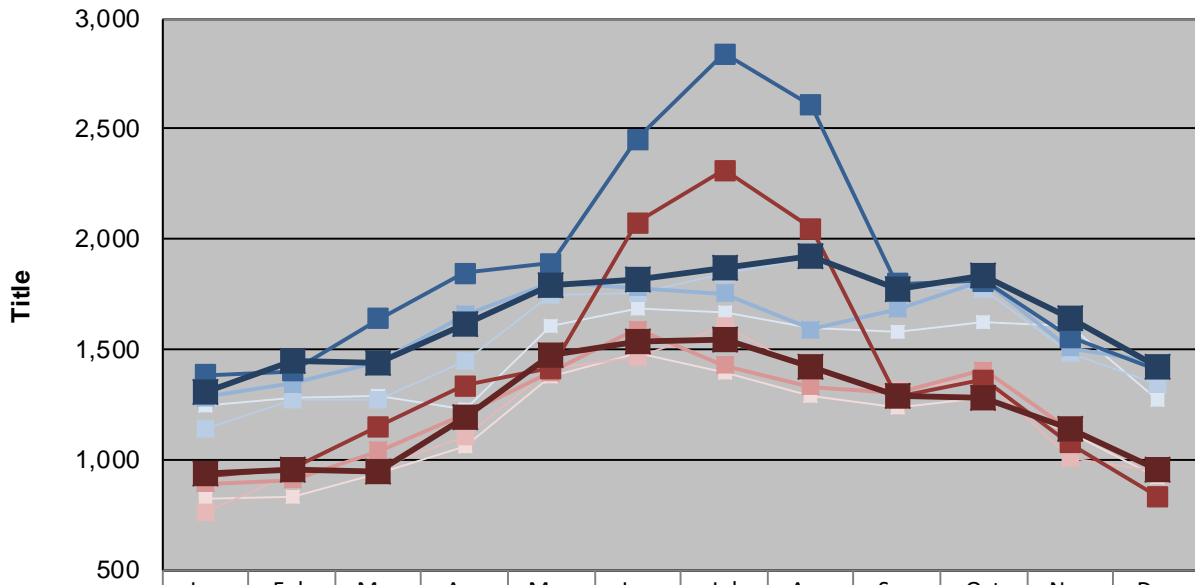
Station Measurement: VOLUME/SPEED/CLASS		
Route: TH 75	Route Direction: N/S	Lanes: 2
County: Pipestone		Closest City: Pipestone
Functional Class: Rural Minor Arterial		
Location: .5 MI S OF CSAH7 (151ST ST), N OF PIPESTONE		
Ref Post: 040+00.540	True Mile: 39.447	Sequence No. 6745
Volume: 44,253		MADT: 1,475
Weekday (M-F) MADT: 1,616		Weekend (Sa-Su) MADT: 1,089



Note: Increase in traffic October 2014 due to hunting openers and May to August 2016 due to detour



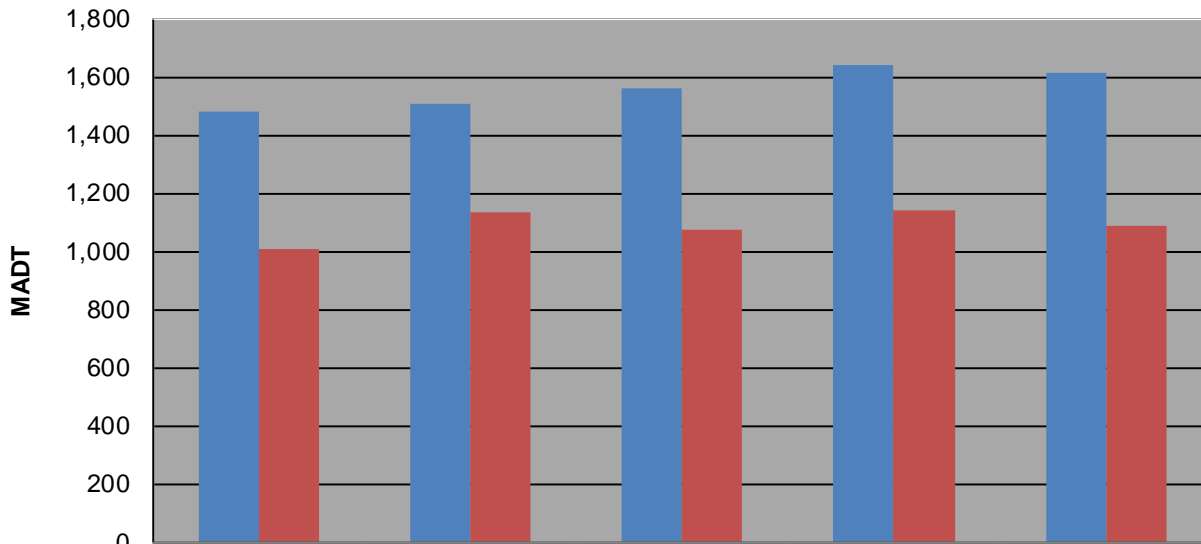
Weekday (WD)/Weekend (WE) Monthly Average Daily Traffic



	Jan	Feb	Mar	Apr	May	Jun	Jul	Aug	Sep	Oct	Nov	Dec
'13 WD	1,244	1,282	1,286	1,232	1,608	1,682	1,664	1,594	1,582	1,628	1,604	1,272
'13 WE	826	836	942	1,062	1,382	1,482	1,396	1,288	1,234	1,282	1,120	920
'14 WD	1,138	1,270	1,276	1,444	1,744	1,752	1,844	1,912	1,782	1,772	1,482	1,346
'14 WE	758	936	966	1,104	1,410	1,464	1,604	1,392	1,320	1,366	1,006	944
'15 WD	1,284	1,346	1,444	1,656	1,804	1,780	1,754	1,590	1,684	1,816	1,508	1,440
'15 WE	890	910	1,042	1,204	1,398	1,590	1,428	1,332	1,300	1,406	1,134	958
'16 WD	1,386	1,404	1,640	1,846	1,888	2,454	2,842	2,606	1,798	1,810	1,558	1,410
'16 WE	928	962	1,152	1,338	1,414	2,074	2,312	2,050	1,284	1,364	1,076	834
'17 WD	1,306	1,446	1,440	1,612	1,794	1,816	1,868	1,926	1,774	1,838	1,640	1,422
'17 WE	934	960	948	1,194	1,474	1,538	1,546	1,418	1,288	1,284	1,142	958

Note: 'Weekday' defined as Monday-Friday, 'Weekend' defined as Saturday-Sunday

Weekday/Weekend Monthly Average Daily Traffic ('14-'18)



	Nov-14	Nov-15	Nov-16	Nov-17	Nov-18
Weekday	1,482	1,508	1,558	1,640	1,616
Weekend	1,006	1,134	1,076	1,142	1,089