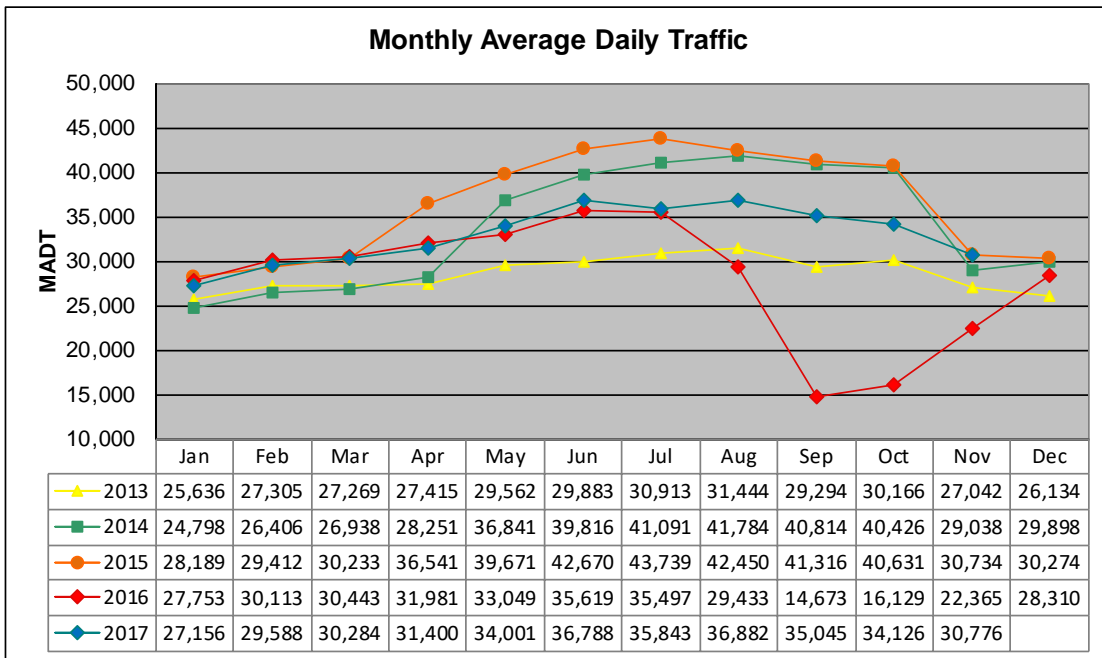


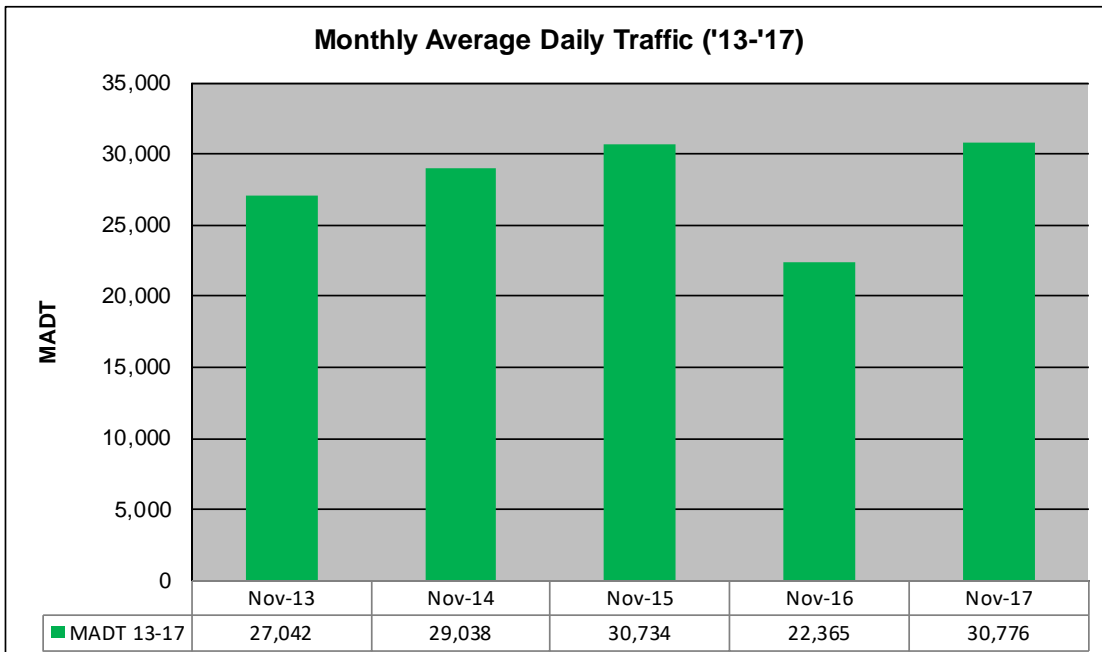
MONTHLY REPORT, STATION NO. 38 (WIM)

NOVEMBER 2017

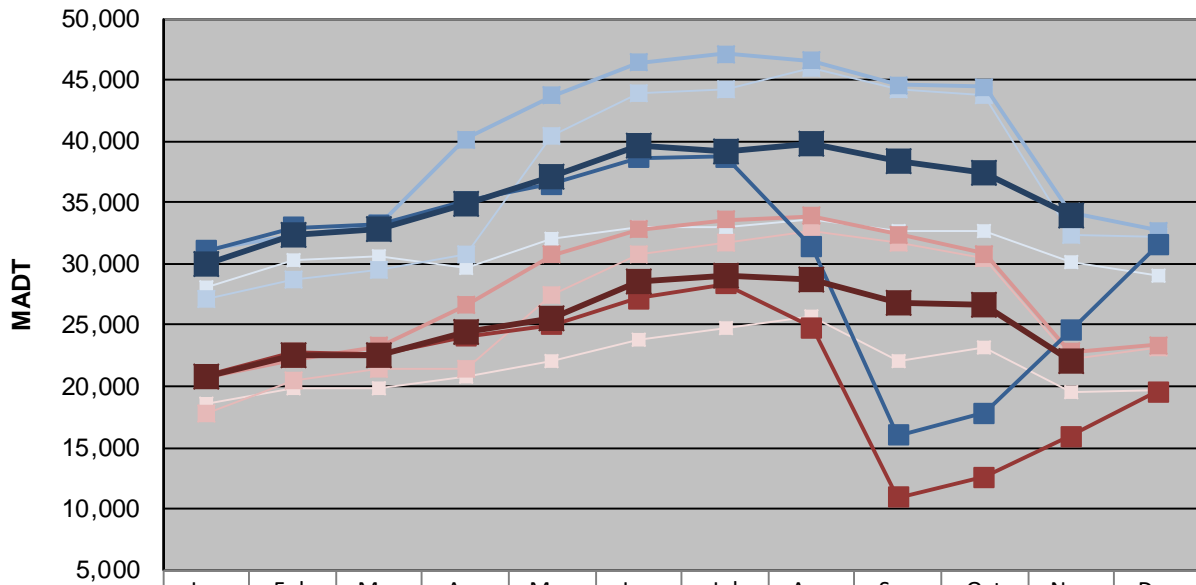
Station Measurement: VOLUME/SPEED/CLASS/WEIGHT		
Route: I-535	Route Direction: N/S	Lanes: 4
County: St Louis	Closest City: Duluth	
Functional Class: Urban Principal Arterial - Interstate		
Location: SW OF MSAS149 (GARFIELD AVE) IN DULUTH		
Ref Post: 001+00.053	True Mile: 1.053	Sequence No. 9823
Volume: 923,269		MADT: 30,776
Weekday (M-F) MADT: 33,988		Weekend (Sa-Su) MADT: 22,074



Note: Decrease in traffic August to November 2016 due to construction on I-535... Increase in traffic May to September 2014 and April to October 2015 due to detour from I-35



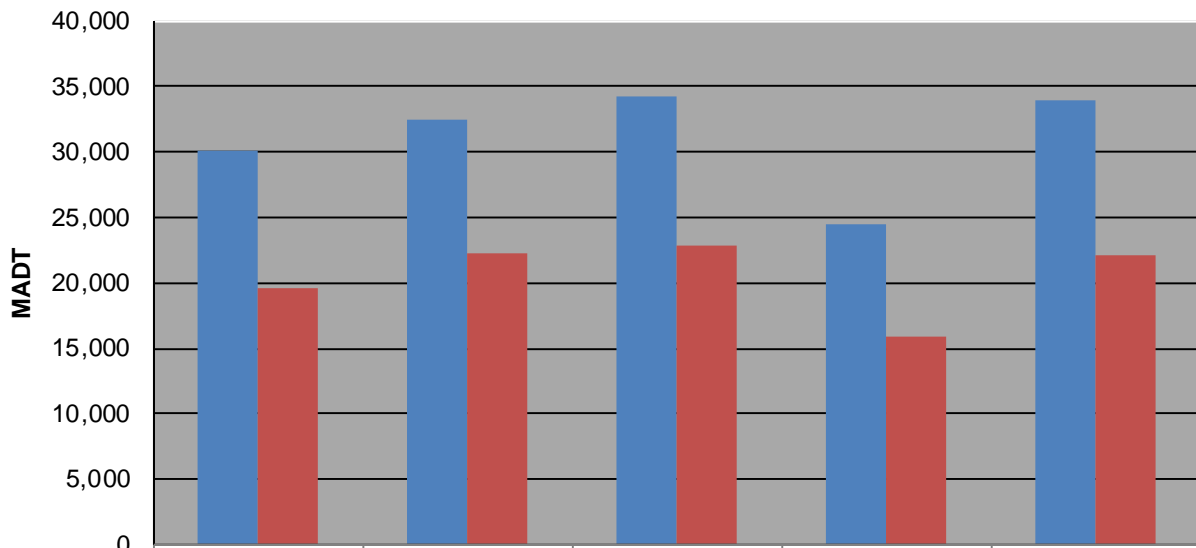
Weekday (WD)/Weekend (WE) Monthly Average Daily Traffic



	Jan	Feb	Mar	Apr	May	Jun	Jul	Aug	Sep	Oct	Nov	Dec
'13 WD	28,082	30,274	30,670	29,696	31,990	32,926	33,066	33,624	32,598	32,646	30,074	29,020
'13 WE	18,636	19,884	19,906	20,848	22,088	23,800	24,684	25,706	22,132	23,164	19,610	19,770
'14 WD	27,156	28,780	29,558	30,716	40,404	43,894	44,280	46,004	44,298	43,766	32,426	32,254
'14 WE	17,746	20,472	21,432	21,476	27,506	30,708	31,648	32,648	31,704	30,536	22,264	23,218
'15 WD	31,118	32,296	33,234	40,172	43,698	46,396	47,154	46,580	44,580	44,424	34,194	32,704
'15 WE	20,786	22,204	23,328	26,624	30,768	32,812	33,578	33,894	32,396	30,810	22,824	23,342
'16 WD	31,058	32,986	33,214	35,120	36,546	38,684	38,708	31,334	15,990	17,826	24,532	31,550
'16 WE	20,860	22,750	22,610	24,084	25,050	27,210	28,386	24,784	10,912	12,578	15,918	19,586
'17 WD	30,034	32,390	32,878	34,886	37,154	39,624	39,126	39,814	38,340	37,418	33,988	
'17 WE	20,758	22,584	22,560	24,424	25,524	28,500	29,096	28,644	26,792	26,604	22,074	

Note: 'Weekday' defined as Monday-Friday, 'Weekend' defined as Saturday-Sunday

Weekday/Weekend Monthly Average Daily Traffic ('13-'17)



	Nov-13	Nov-14	Nov-15	Nov-16	Nov-17
Weekday	30,074	32,426	34,194	24,532	33,988
Weekend	19,610	22,264	22,824	15,918	22,074