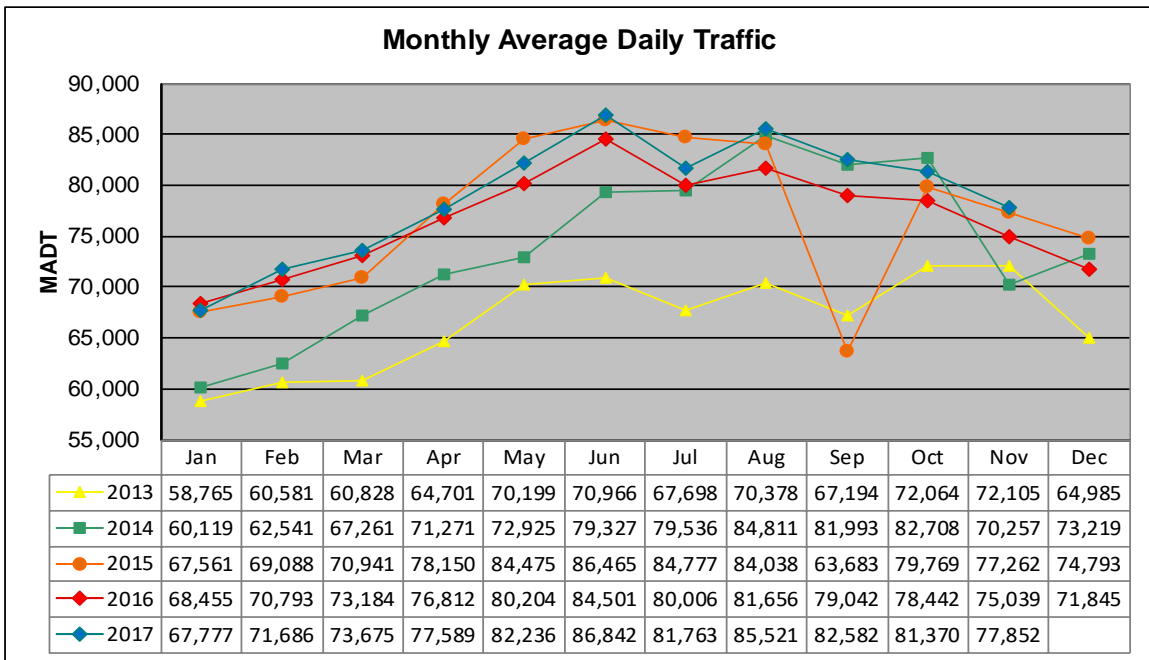


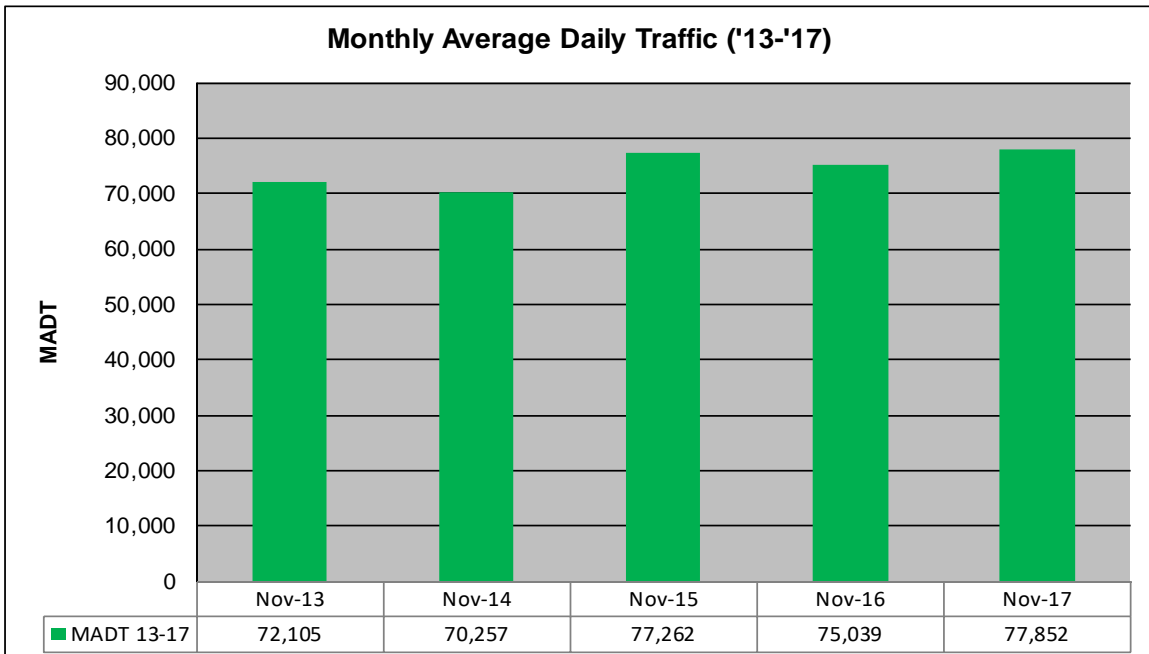
# MONTHLY REPORT, STATION NO. 341 (ATR)

## NOVEMBER 2017

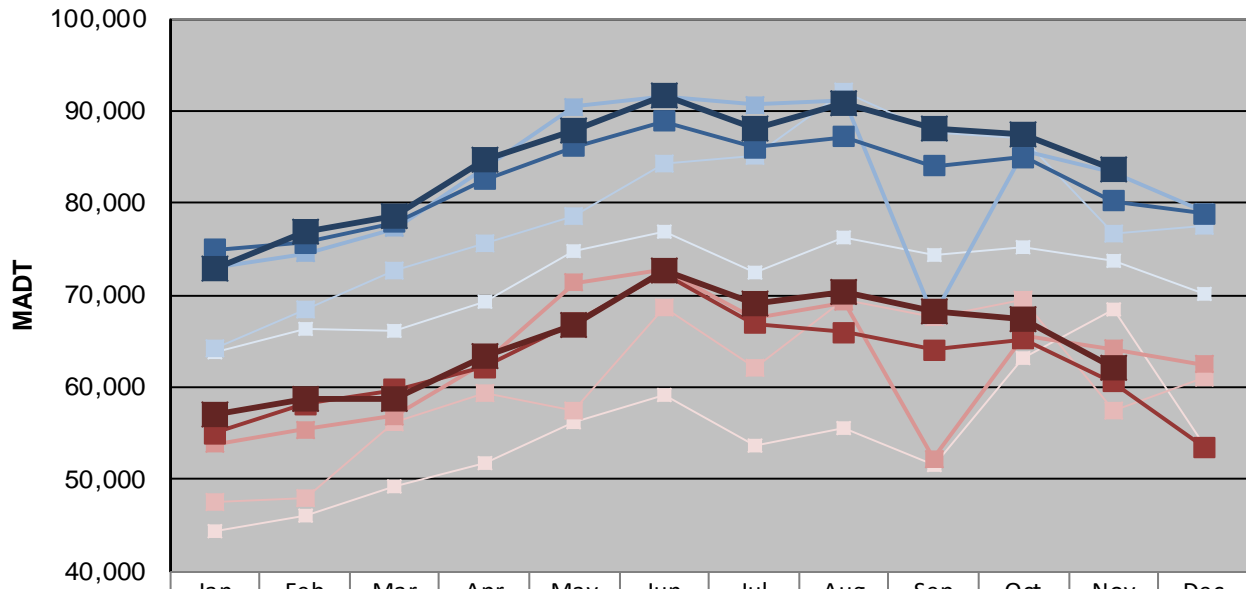
|   |                      |                                     |
|---|----------------------|-------------------------------------|
| Station Measurement: VOLUME/SPEED/CLASS                 |                      |                                     |
| Route: I-694  | Route Direction: N/S | Lanes: 4                            |
| County: Washington                                      |                      | Closest City: Oakdale               |
| Functional Class: Urban Principal Arterial - Interstate |                      |                                     |
| Location: S OF CSAH35 (50TH ST N) IN OAKDALE            |                      |                                     |
| Ref Post: 053+00.290                                    | True Mile: 53.237    | Sequence No. 9858                   |
| <b>Volume: 2,335,558</b>                                |                      | <b>MADT: 77,852</b>                 |
| <b>Weekday (M-F) MADT: 83,550</b>                       |                      | <b>Weekend (Sa-Su) MADT: 62,086</b> |



Note: Increase in traffic November 2013, June to October 2014, and May/July/August/October 2015 due to detour from TH 36



### Weekday (WD)/Weekend (WE) Monthly Average Daily Traffic



Note: 'Weekday' defined as Monday-Friday, 'Weekend' defined as Saturday-Sunday

### Weekday/Weekend Monthly Average Daily Traffic ('13-'17)

