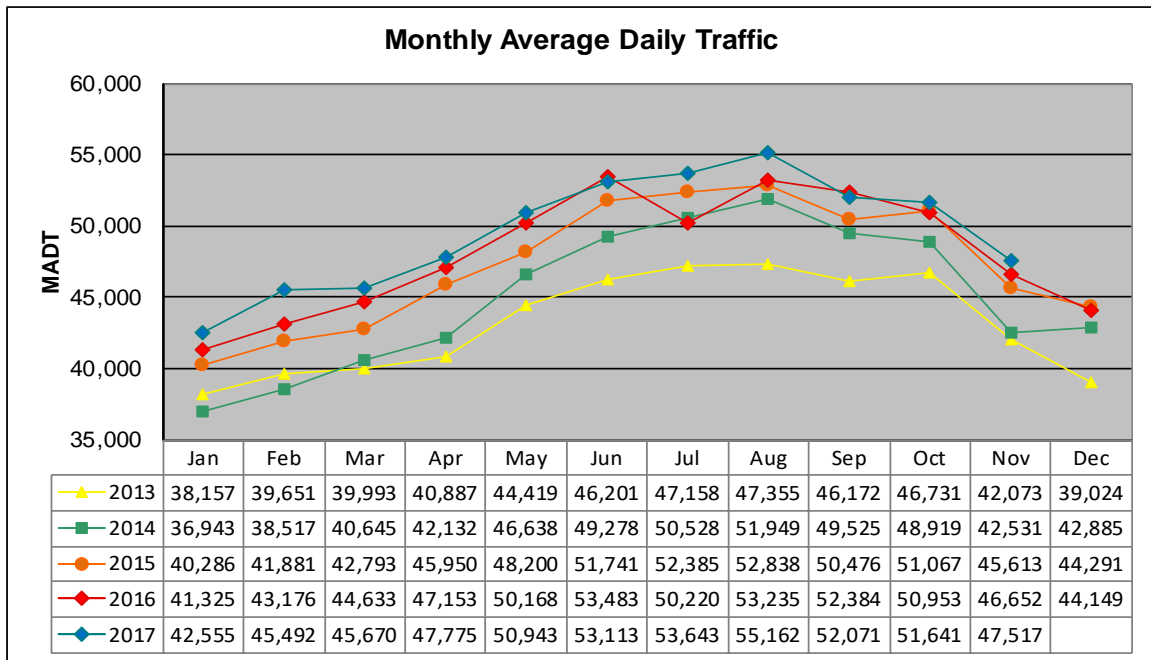


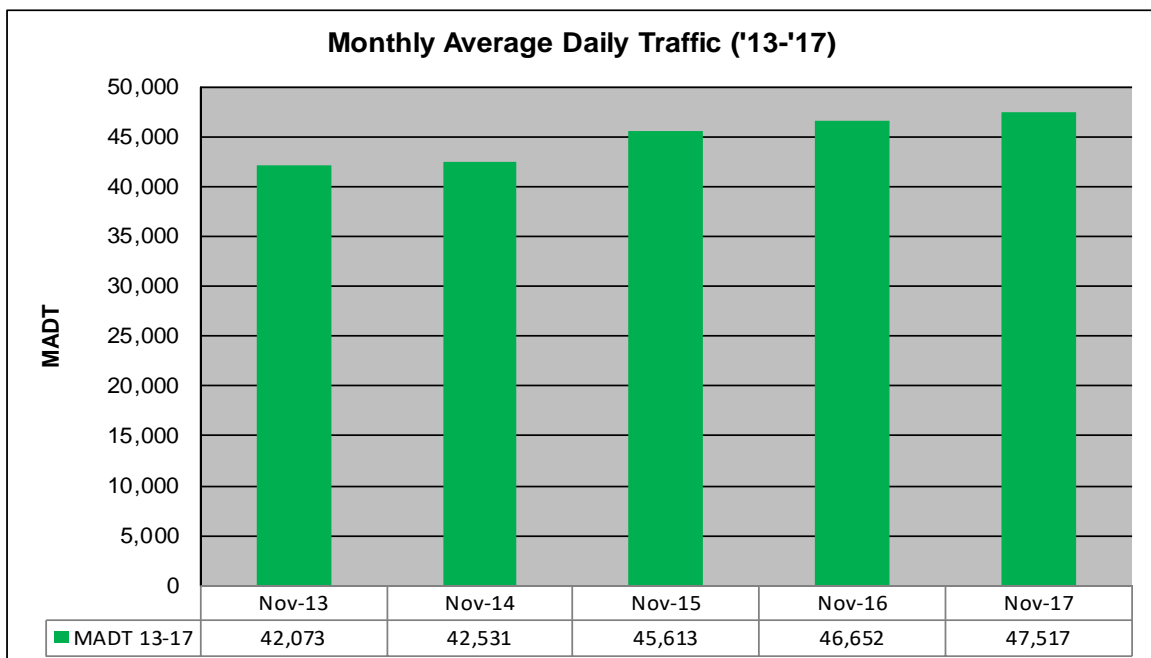
MONTHLY REPORT, STATION NO. 335 (ATR)

NOVEMBER 2017

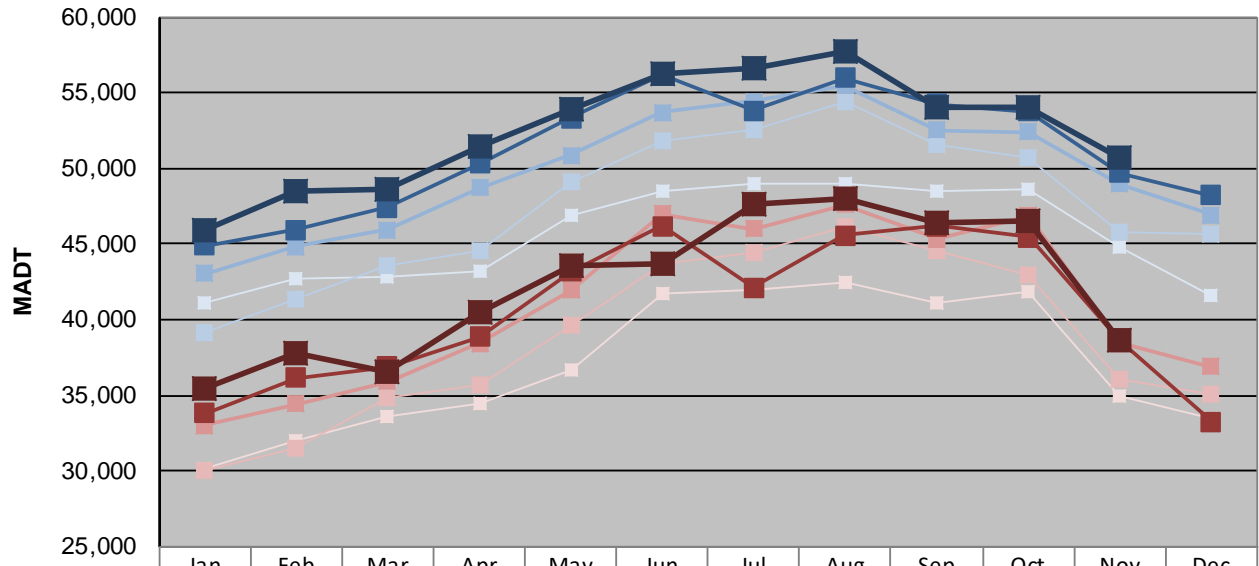
| | | |
|---|----------------------|-------------------------------------|
| Station Measurement: VOLUME/SPEED/CLASS | | |
| Route: I-35W | Route Direction: N/S | Lanes: 4 |
| County: Anoka | | Closest City: Blaine |
| Functional Class: Urban Principal Arterial - Interstate | | |
| Location: W OF CR53 (SUNSET AVE NE) IN BLAINE | | |
| Ref Post: 033+00.752 | True Mile: 33.787 | Sequence No. 9853 |
| Volume: 1,425,523 | | MADT: 47,517 |
| Weekday (M-F) MADT: 50,768 | | Weekend (Sa-Su) MADT: 38,596 |



Note: Decrease in traffic July 2016 due to construction on I-35W and TH 62



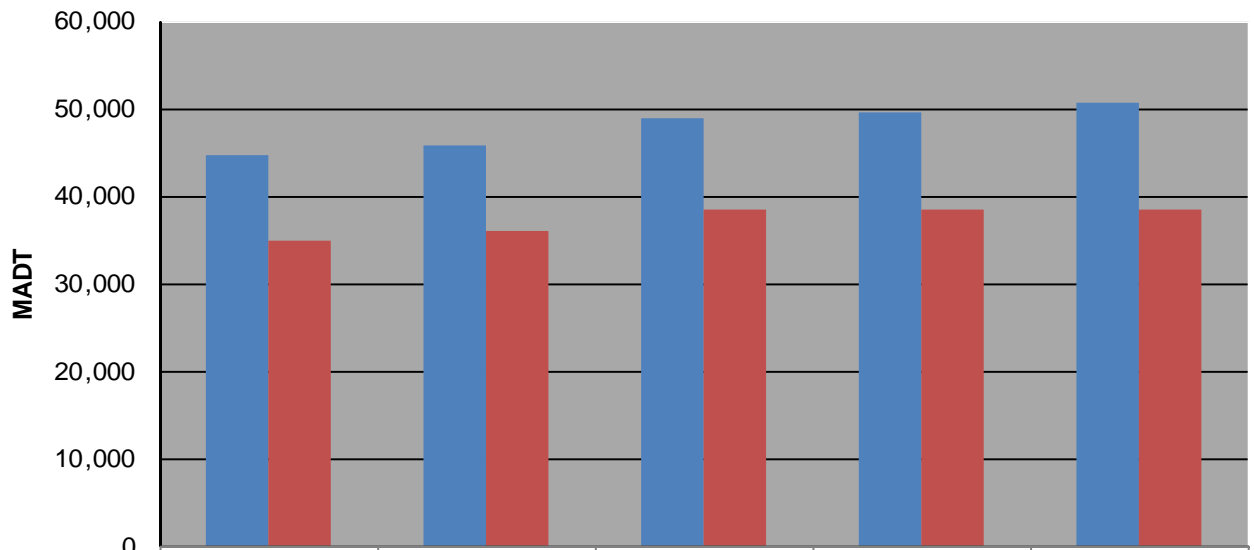
Weekday (WD)/Weekend (WE) Monthly Average Daily Traffic



| | Jan | Feb | Mar | Apr | May | Jun | Jul | Aug | Sep | Oct | Nov | Dec |
|--------|--------|--------|--------|--------|--------|--------|--------|--------|--------|--------|--------|--------|
| '13 WD | 41,090 | 42,696 | 42,792 | 43,256 | 46,858 | 48,438 | 49,044 | 49,018 | 48,526 | 48,602 | 44,754 | 41,570 |
| '13 WE | 30,130 | 32,038 | 33,592 | 34,436 | 36,678 | 41,728 | 41,966 | 42,420 | 41,162 | 41,876 | 34,910 | 33,486 |
| '14 WD | 39,104 | 41,316 | 43,512 | 44,520 | 49,118 | 51,830 | 52,588 | 54,452 | 51,564 | 50,764 | 45,774 | 45,710 |
| '14 WE | 30,002 | 31,520 | 34,846 | 35,708 | 39,576 | 43,670 | 44,476 | 46,102 | 44,570 | 42,950 | 36,044 | 35,060 |
| '15 WD | 43,050 | 44,852 | 45,928 | 48,702 | 50,888 | 53,700 | 54,424 | 55,498 | 52,520 | 52,408 | 48,954 | 46,934 |
| '15 WE | 33,012 | 34,450 | 35,906 | 38,414 | 41,924 | 46,988 | 45,994 | 47,578 | 45,306 | 46,878 | 38,506 | 36,894 |
| '16 WD | 44,872 | 45,910 | 47,416 | 50,312 | 53,350 | 56,134 | 53,816 | 55,970 | 54,228 | 53,762 | 49,668 | 48,234 |
| '16 WE | 33,790 | 36,178 | 36,880 | 38,882 | 43,190 | 46,180 | 42,108 | 45,578 | 46,192 | 45,428 | 38,554 | 33,254 |
| '17 WD | 45,850 | 48,556 | 48,620 | 51,392 | 53,884 | 56,288 | 56,632 | 57,762 | 54,044 | 54,074 | 50,768 | |
| '17 WE | 35,488 | 37,832 | 36,572 | 40,540 | 43,552 | 43,666 | 47,576 | 48,056 | 46,432 | 46,486 | 38,596 | |

Note: 'Weekday' defined as Monday-Friday, 'Weekend' defined as Saturday-Sunday

Weekday/Weekend Monthly Average Daily Traffic ('13-'17)



| | Nov-13 | Nov-14 | Nov-15 | Nov-16 | Nov-17 |
|---------|--------|--------|--------|--------|--------|
| Weekday | 44,754 | 45,774 | 48,954 | 49,668 | 50,768 |
| Weekend | 34,910 | 36,044 | 38,506 | 38,554 | 38,596 |