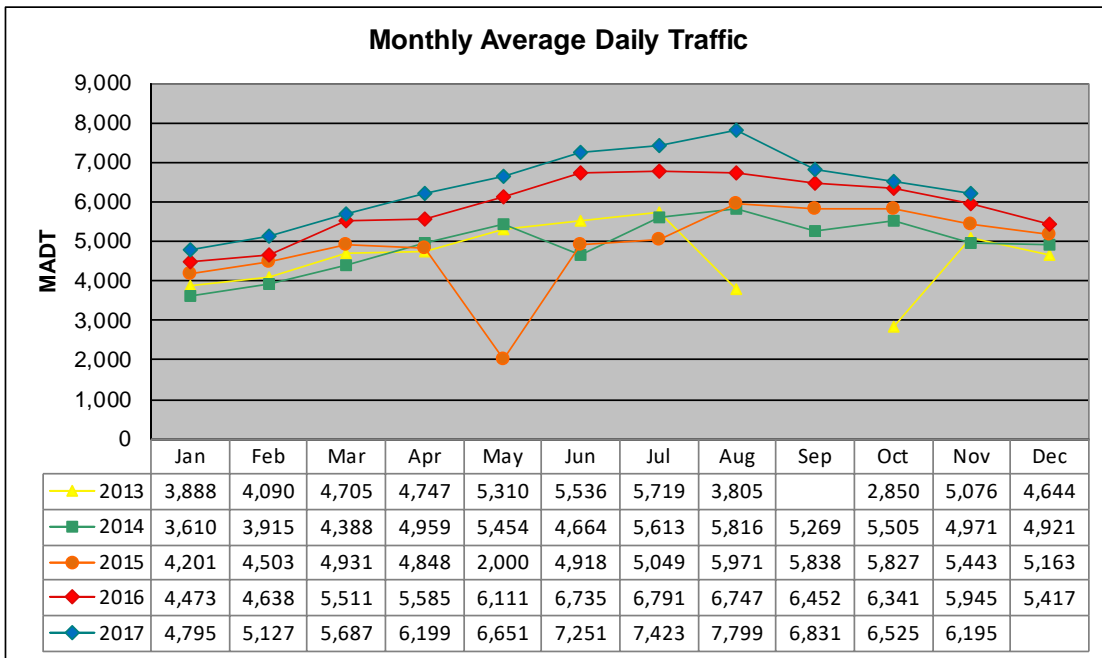


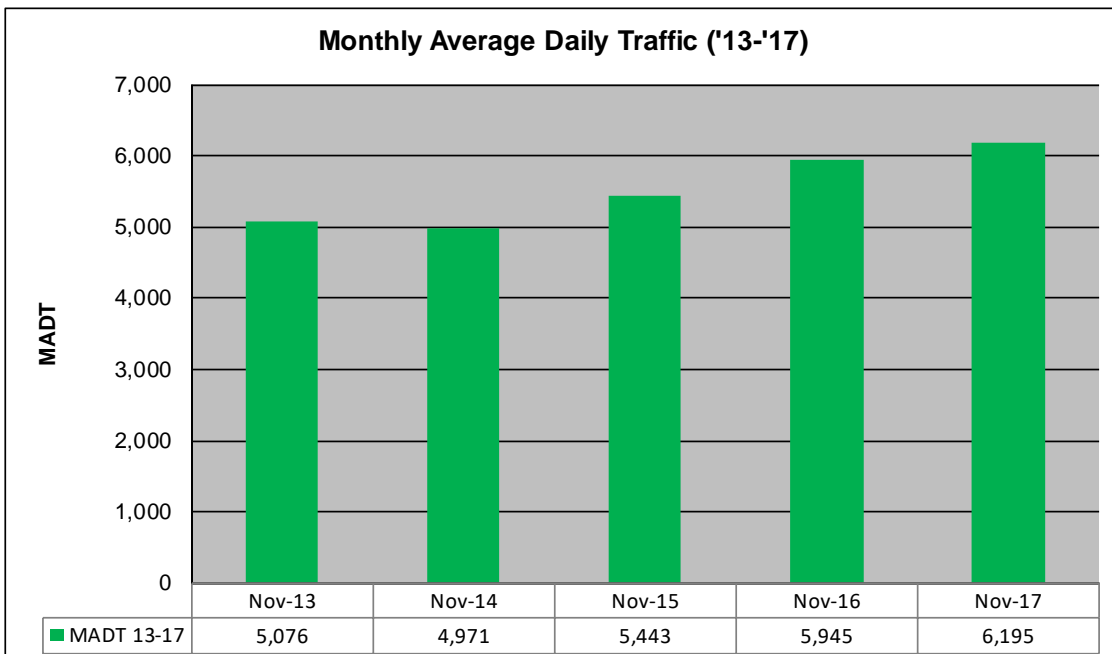
MONTHLY REPORT, STATION NO. 27 (WIM)

NOVEMBER 2017

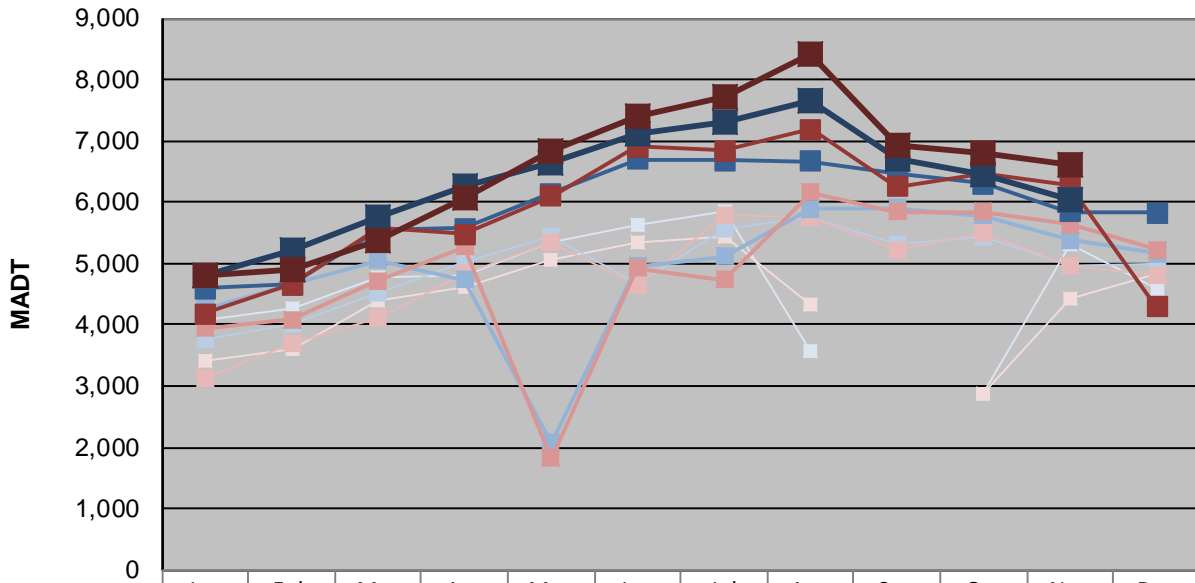
Station Measurement: VOLUME/SPEED/CLASS/WEIGHT		
Route: TH 60	Route Direction: E/W	Lanes: 4
County: Watonwan	Closest City: St James	
Functional Class: Rural Principal Arterial - Other		
Location: .4 MI E OF 690TH AVE, SW OF ST JAMES		
Ref Post: 064+00.108	True Mile: 64.203	Sequence No. 9830
Volume: 185,838		MADT: 6,195
Weekday (M-F) MADT: 6,046		Weekend (Sa-Su) MADT: 6,612



Note: No data Sep '13; road closed for reconstruction... Increase in traffic Jun/Jul '16 due to detour... Decrease in traffic Aug/Oct '13, Jun/Jul '14, and May to Jul '15 due to construction... Volume data reported as ATR 197 from '13-'14



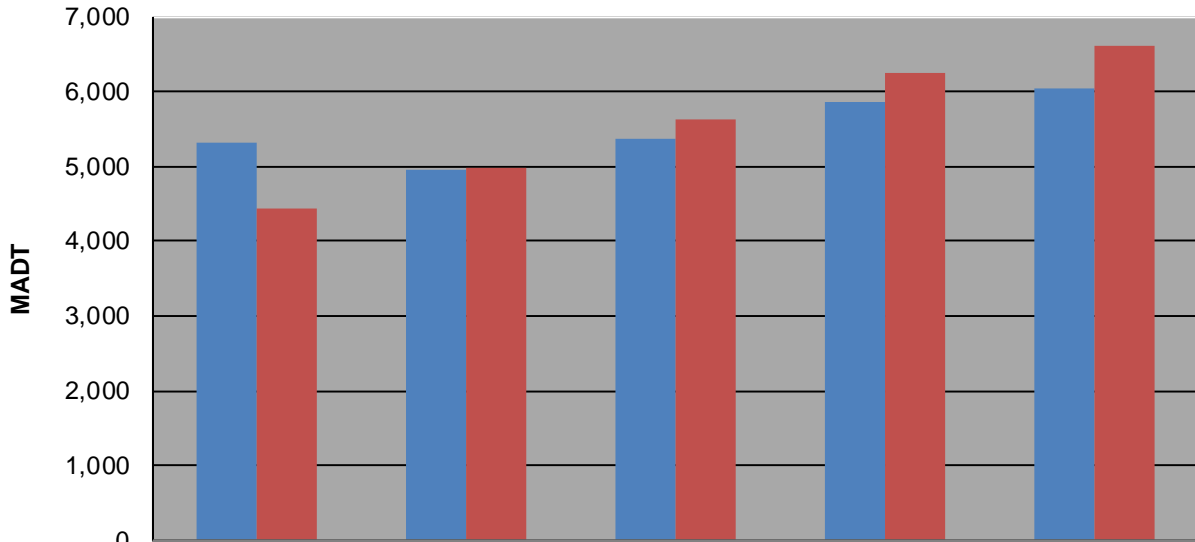
Weekday (WD)/Weekend (WE) Monthly Average Daily Traffic



	Jan	Feb	Mar	Apr	May	Jun	Jul	Aug	Sep	Oct	Nov	Dec
'13 WD	4,080	4,280	4,790	4,792	5,354	5,626	5,840	3,560		2,882	5,314	4,592
'13 WE	3,412	3,614	4,396	4,624	5,064	5,356	5,436	4,336		2,884	4,430	4,832
'14 WD	3,752	4,002	4,530	5,040	5,444	4,668	5,570	5,766	5,316	5,426	4,968	4,994
'14 WE	3,116	3,696	4,110	4,840	5,352	4,660	5,792	5,772	5,212	5,516	4,978	4,822
'15 WD	4,268	4,670	5,058	4,728	2,070	4,958	5,120	5,896	5,900	5,786	5,384	5,164
'15 WE	3,948	4,084	4,722	5,272	1,822	4,926	4,740	6,168	5,838	5,836	5,640	5,226
'16 WD	4,588	4,656	5,544	5,578	6,148	6,694	6,688	6,666	6,456	6,296	5,850	5,828
'16 WE	4,180	4,662	5,578	5,482	6,100	6,912	6,842	7,182	6,260	6,482	6,264	4,290
'17 WD	4,820	5,216	5,758	6,260	6,658	7,120	7,310	7,654	6,704	6,446	6,046	
'17 WE	4,820	4,906	5,370	6,080	6,848	7,394	7,706	8,420	6,932	6,786	6,612	

Note: 'Weekday' defined as Monday-Friday, 'Weekend' defined as Saturday-Sunday

Weekday/Weekend Monthly Average Daily Traffic ('13-'17)



	Nov-13	Nov-14	Nov-15	Nov-16	Nov-17
Weekday	5,314	4,968	5,384	5,850	6,046
Weekend	4,430	4,978	5,640	6,264	6,612