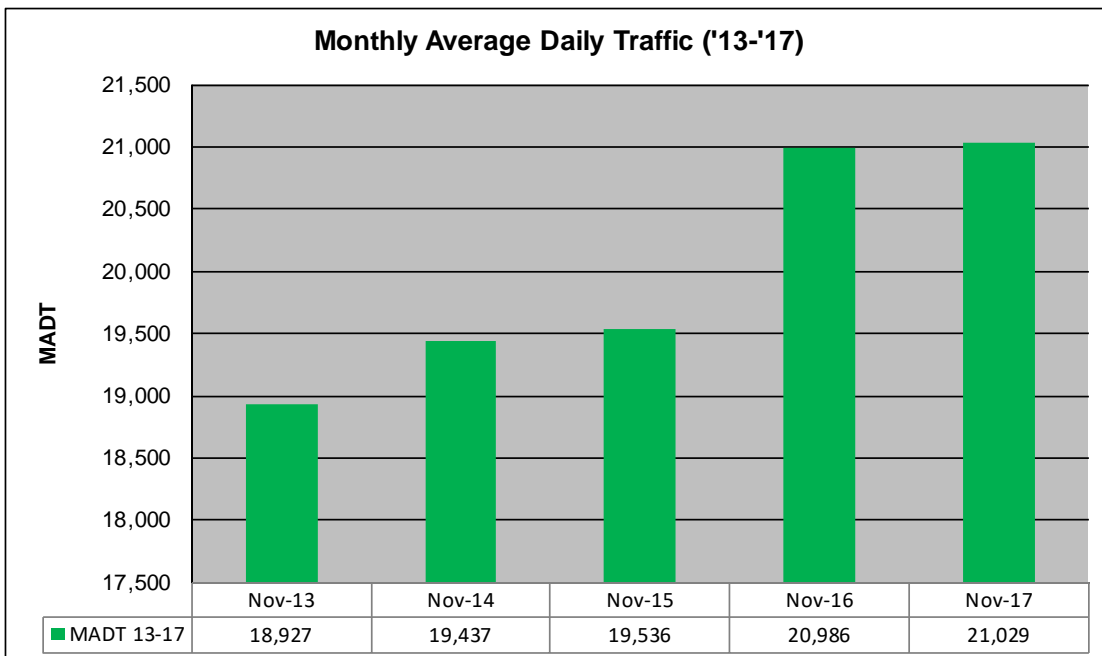
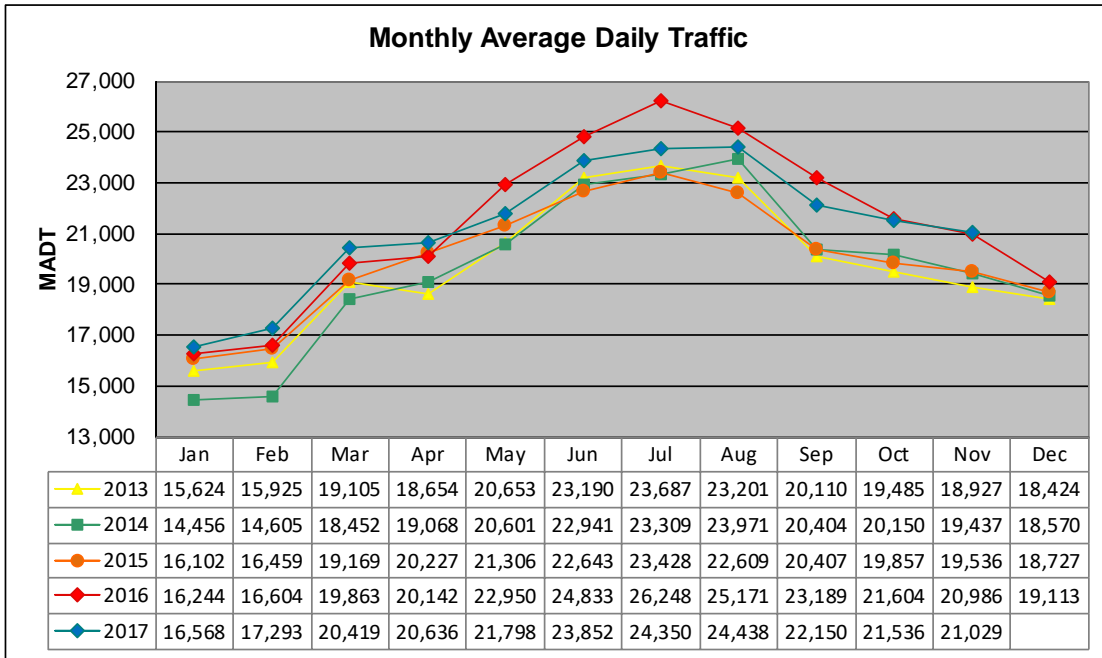


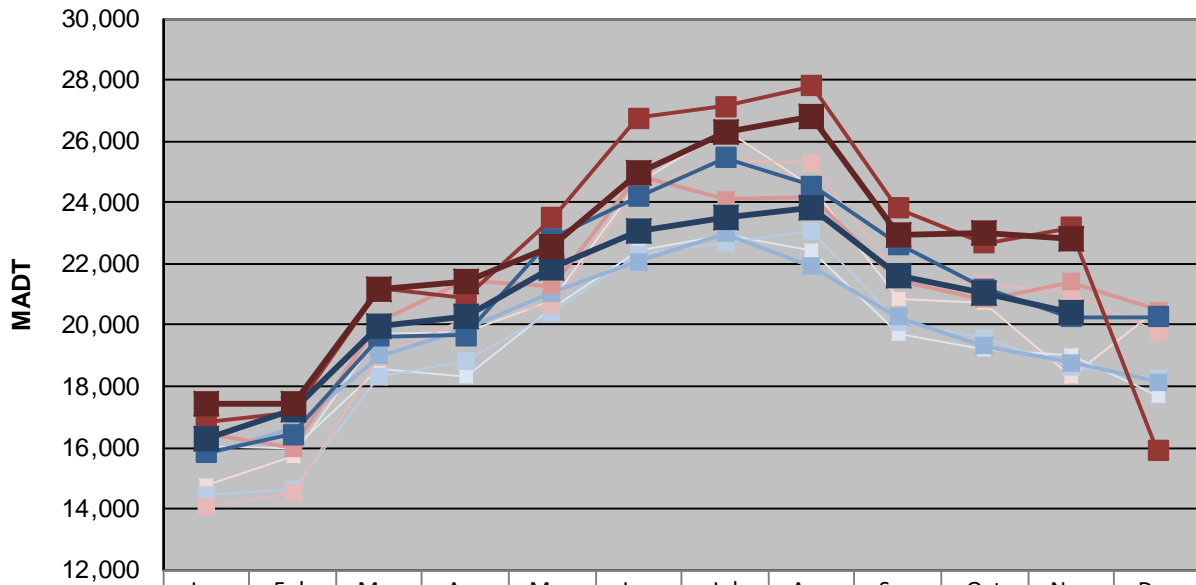
MONTHLY REPORT, STATION NO. 26 (WIM)

NOVEMBER 2017

Station Measurement: VOLUME/SPEED/CLASS/WEIGHT		
Route: I-35	Route Direction: N/S	Lanes: 4
County: Steele	Closest City: Ellendale	
Functional Class: Rural Principal Arterial - Interstate		
Location: 3.5 MI N OF TH30, N OF ELLENDALE		
Ref Post: 030+00.100	True Mile: 30.103	Sequence No. 5707
Volume: 630,878		MADT: 21,029
Weekday (M-F) MADT: 20,382		Weekend (Sa-Su) MADT: 22,806



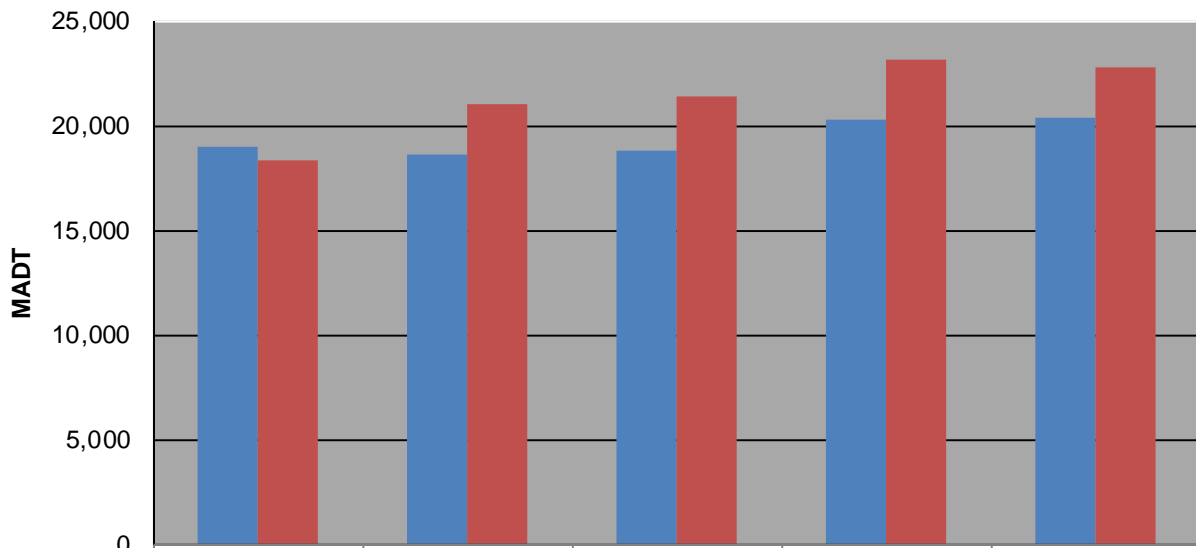
Weekday (WD)/Weekend (WE) Monthly Average Daily Traffic



	Jan	Feb	Mar	Apr	May	Jun	Jul	Aug	Sep	Oct	Nov	Dec
'13 WD	16,032	16,006	18,544	18,352	20,506	22,456	22,958	22,426	19,714	19,238	19,038	17,658
'13 WE	14,772	15,724	19,688	19,776	20,766	24,662	26,332	24,532	20,866	20,728	18,334	20,560
'14 WD	14,448	14,648	18,298	18,856	20,390	22,296	22,692	23,042	20,094	19,582	18,642	18,284
'14 WE	14,074	14,500	18,940	20,210	20,660	24,446	25,398	25,264	21,574	21,334	21,026	19,764
'15 WD	15,786	16,646	18,988	19,864	21,050	22,058	23,002	21,918	20,280	19,314	18,768	18,134
'15 WE	16,482	15,992	20,094	21,458	21,266	24,854	24,112	24,186	21,486	20,852	21,404	20,504
'16 WD	15,830	16,432	19,650	19,652	22,846	24,194	25,474	24,554	22,642	21,178	20,282	20,266
'16 WE	16,850	17,160	21,194	20,886	23,492	26,766	27,146	27,806	23,826	22,674	23,188	15,912
'17 WD	16,318	17,230	19,974	20,258	21,844	23,100	23,490	23,830	21,586	21,038	20,382	
'17 WE	17,448	17,454	21,150	21,392	22,546	24,984	26,294	26,800	22,914	23,000	22,806	

Note: 'Weekday' defined as Monday-Friday, 'Weekend' defined as Saturday-Sunday

Weekday/Weekend Monthly Average Daily Traffic ('13-'17)



	Nov-13	Nov-14	Nov-15	Nov-16	Nov-17
Weekday	19,038	18,642	18,768	20,282	20,382
Weekend	18,334	21,026	21,404	23,188	22,806