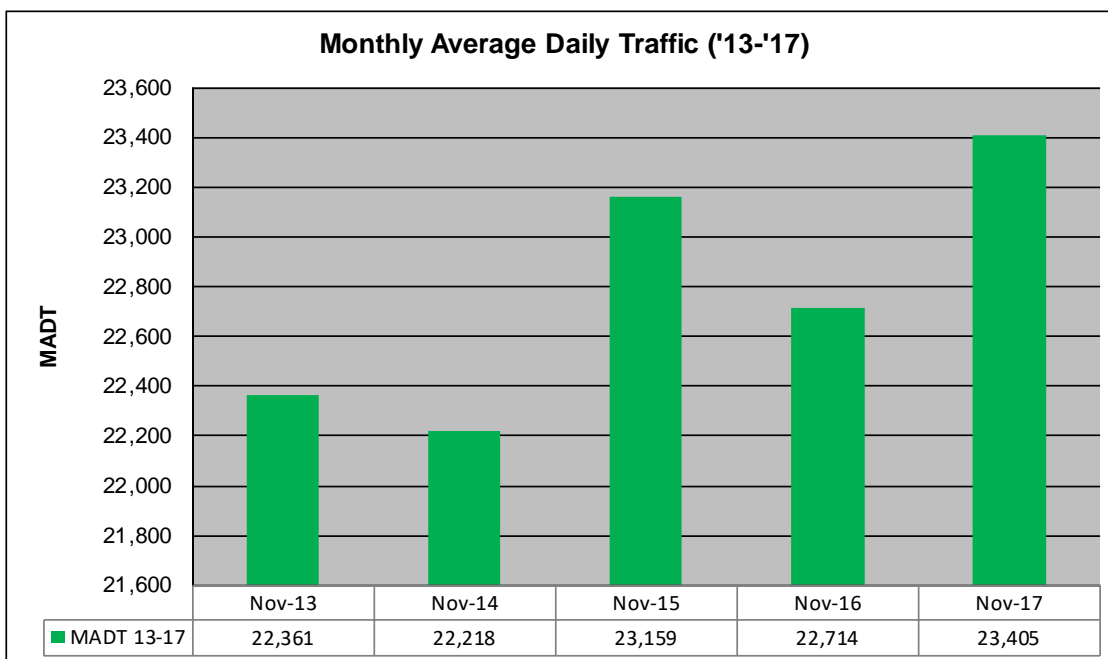
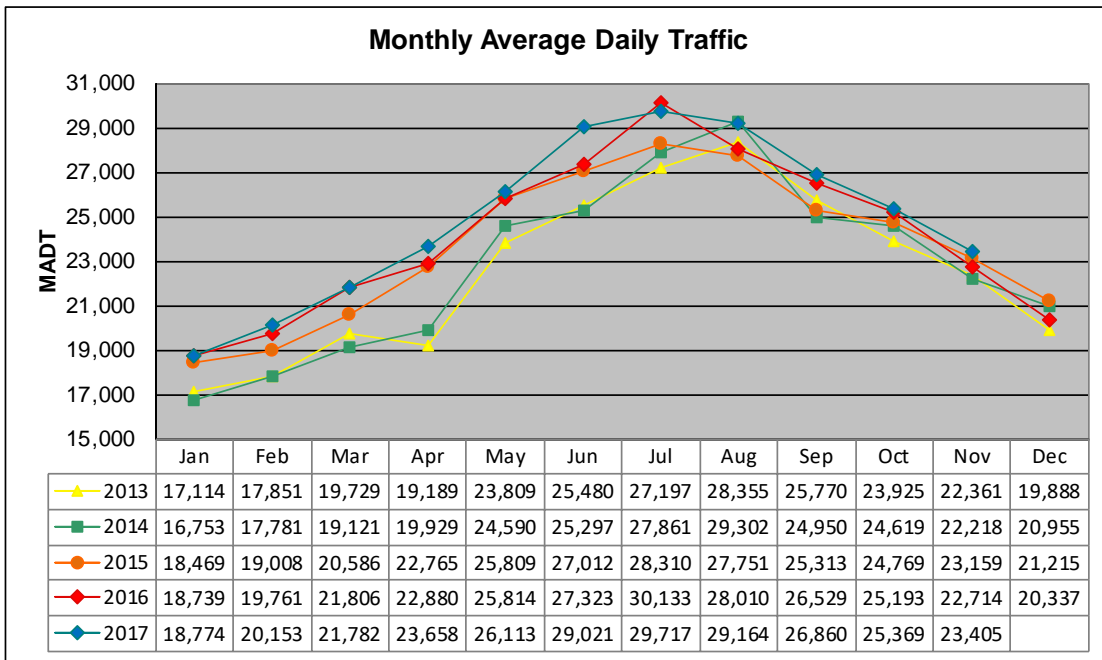


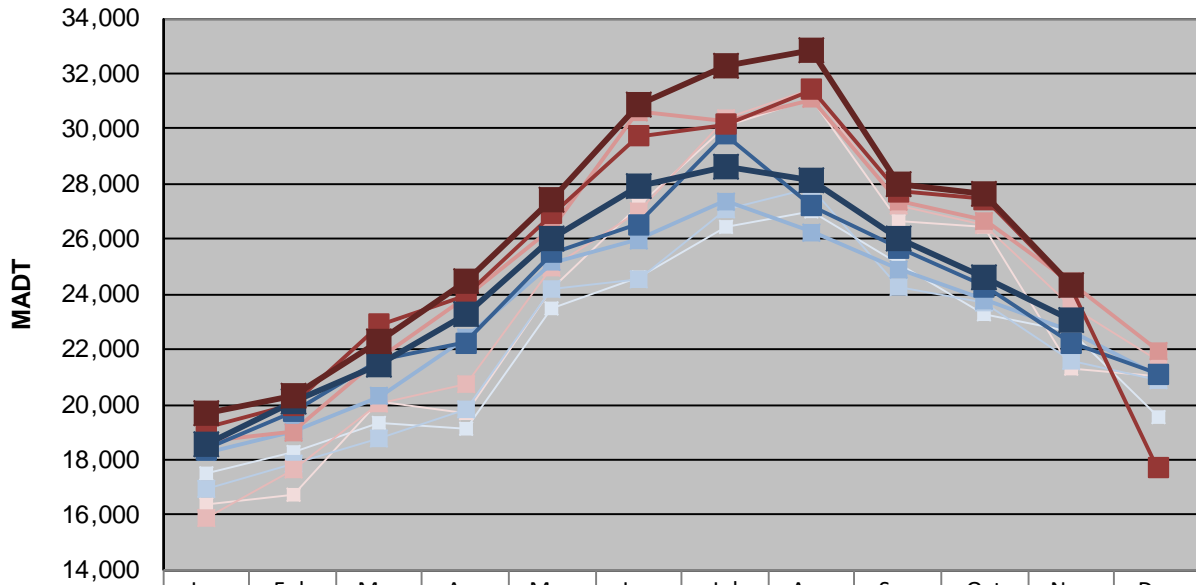
MONTHLY REPORT, STATION NO. 175 (ATR)

NOVEMBER 2017

| | | |
|---|----------------------|-------------------------------------|
| Station Measurement: VOLUME/SPEED/CLASS | | |
| Route: I-94 | Route Direction: E/W | Lanes: 4 |
| County: Stearns | | Closest City: Sauk Centre |
| Functional Class: Rural Principal Arterial - Interstate | | |
| Location: E OF CR186, SE OF SAUK CENTRE | | |
| Ref Post: 128+00.640 | True Mile: 129 | Sequence No. 6776 |
| Volume: 702,151 | | MADT: 23,405 |
| Weekday (M-F) MADT: 23,054 | | Weekend (Sa-Su) MADT: 24,300 |



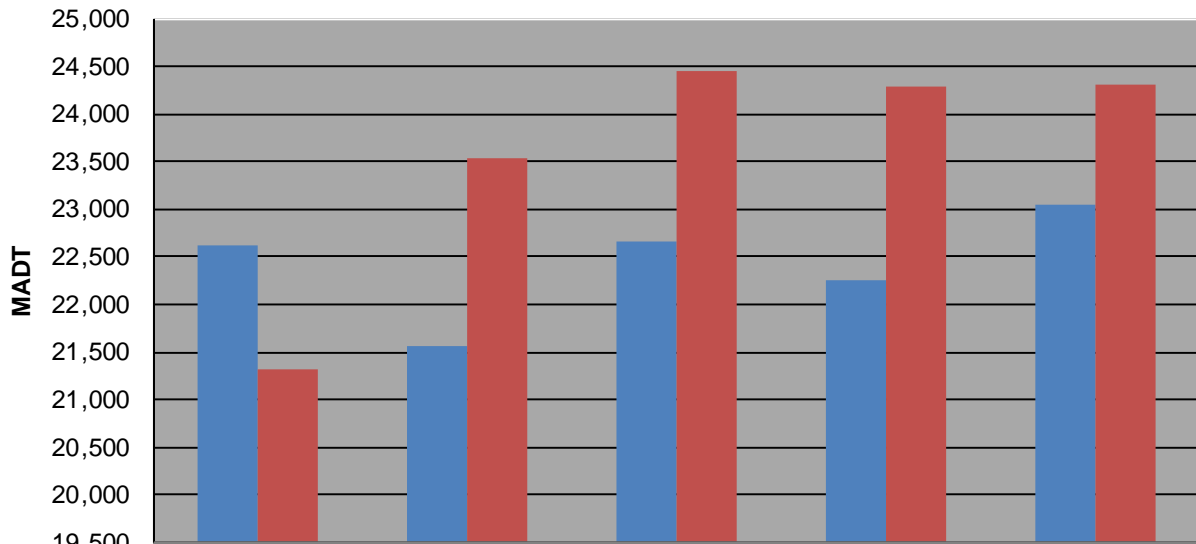
Weekday (WD)/Weekend (WE) Monthly Average Daily Traffic



| | Jan | Feb | Mar | Apr | May | Jun | Jul | Aug | Sep | Oct | Nov | Dec |
|--------|--------|--------|--------|--------|--------|--------|--------|--------|--------|--------|--------|--------|
| '13 WD | 17,496 | 18,296 | 19,320 | 19,130 | 23,508 | 24,602 | 26,410 | 26,994 | 25,098 | 23,294 | 22,612 | 19,564 |
| '13 WE | 16,358 | 16,740 | 20,080 | 19,656 | 24,222 | 27,238 | 30,084 | 31,086 | 26,628 | 26,432 | 21,318 | 21,014 |
| '14 WD | 16,916 | 17,828 | 18,768 | 19,840 | 24,224 | 24,522 | 27,100 | 27,860 | 24,264 | 23,718 | 21,560 | 20,904 |
| '14 WE | 15,870 | 17,664 | 20,030 | 20,732 | 24,936 | 27,016 | 30,400 | 31,446 | 27,208 | 26,536 | 23,532 | 21,608 |
| '15 WD | 18,252 | 19,018 | 20,290 | 22,430 | 25,144 | 25,952 | 27,380 | 26,262 | 24,926 | 23,778 | 22,666 | 21,070 |
| '15 WE | 18,682 | 18,984 | 21,726 | 23,900 | 26,392 | 30,604 | 30,262 | 31,070 | 27,370 | 26,656 | 24,446 | 21,972 |
| '16 WD | 18,352 | 19,734 | 21,632 | 22,220 | 25,506 | 26,518 | 29,818 | 27,196 | 25,692 | 24,268 | 22,252 | 21,102 |
| '16 WE | 19,182 | 19,988 | 22,906 | 23,938 | 26,924 | 29,736 | 30,152 | 31,404 | 27,738 | 27,428 | 24,298 | 17,706 |
| '17 WD | 18,530 | 20,082 | 21,418 | 23,248 | 26,020 | 27,938 | 28,602 | 28,152 | 26,020 | 24,596 | 23,054 | |
| '17 WE | 19,668 | 20,330 | 22,258 | 24,482 | 27,428 | 30,908 | 32,286 | 32,860 | 28,002 | 27,640 | 24,300 | |

Note: 'Weekday' defined as Monday-Friday, 'Weekend' defined as Saturday-Sunday

Weekday/Weekend Monthly Average Daily Traffic ('13-'17)



| | Nov-13 | Nov-14 | Nov-15 | Nov-16 | Nov-17 |
|---------|--------|--------|--------|--------|--------|
| Weekday | 22,612 | 21,560 | 22,666 | 22,252 | 23,054 |
| Weekend | 21,318 | 23,532 | 24,446 | 24,298 | 24,300 |