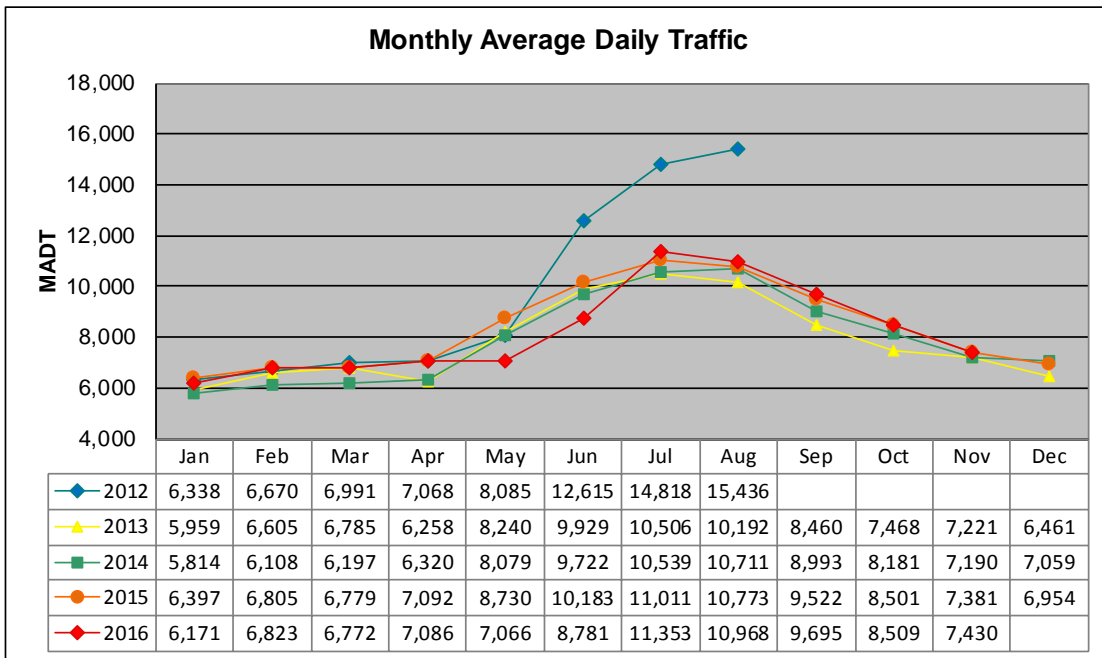


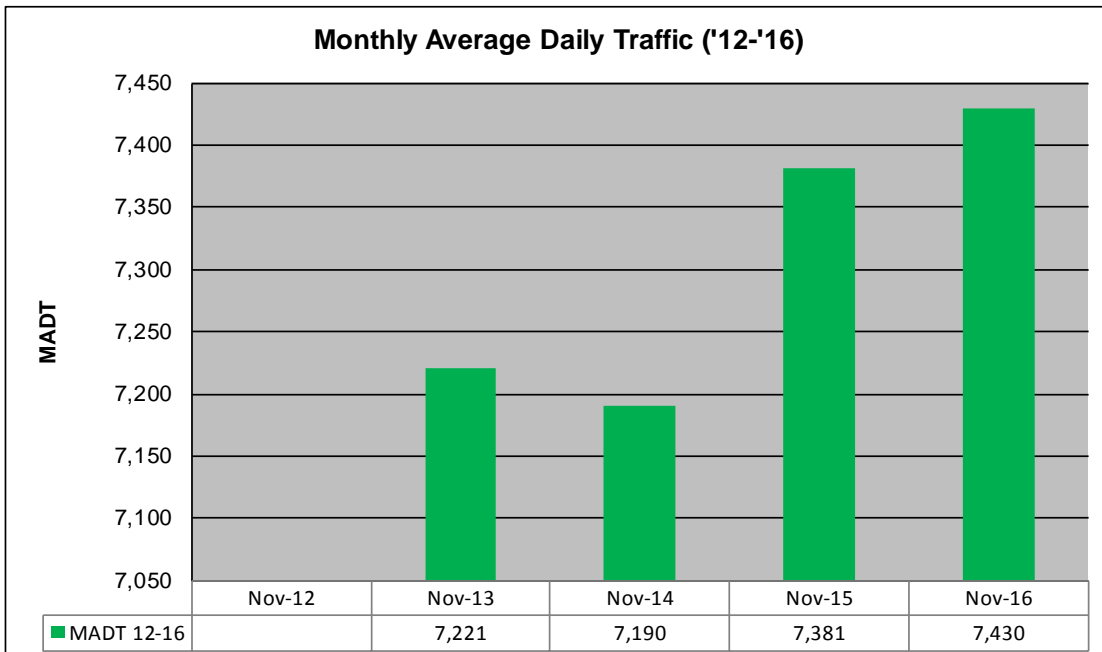
MONTHLY REPORT, STATION NO. 29 (WIM)

NOVEMBER 2016

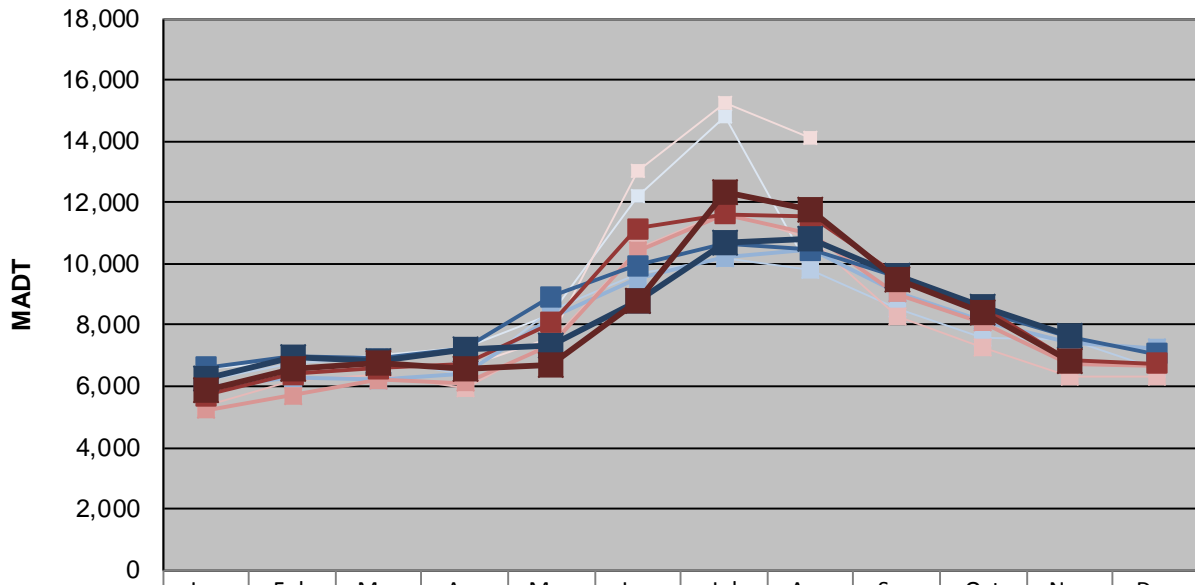
| | | |
|---|-----------------------|------------------------------------|
| Station Measurement: VOLUME/SPEED/CLASS/WEIGHT | | |
| Route: TH 53 | Route Direction: N/S | Lanes: 4 |
| County: St Louis | Closest City: Eveleth | |
| Functional Class: Rural Principal Arterial - Other | | |
| Location: 3 MI S OF CSAH59 (MELRUDE RD), S OF EVELETH | | |
| Ref Post: 042+00.100 | True Mile: 42.218 | Sequence No. 6763 |
| Volume: 222,900 | | MADT: 7,430 |
| Weekday (M-F) MADT: 7,676 | | Weekend (Sa-Su) MADT: 6,858 |



Note: No data September to December 2012 due to problem with equipment... Increase in traffic June to August 2012 due to detour from I-35... Decrease in traffic May/June 2016 due to construction on TH 53



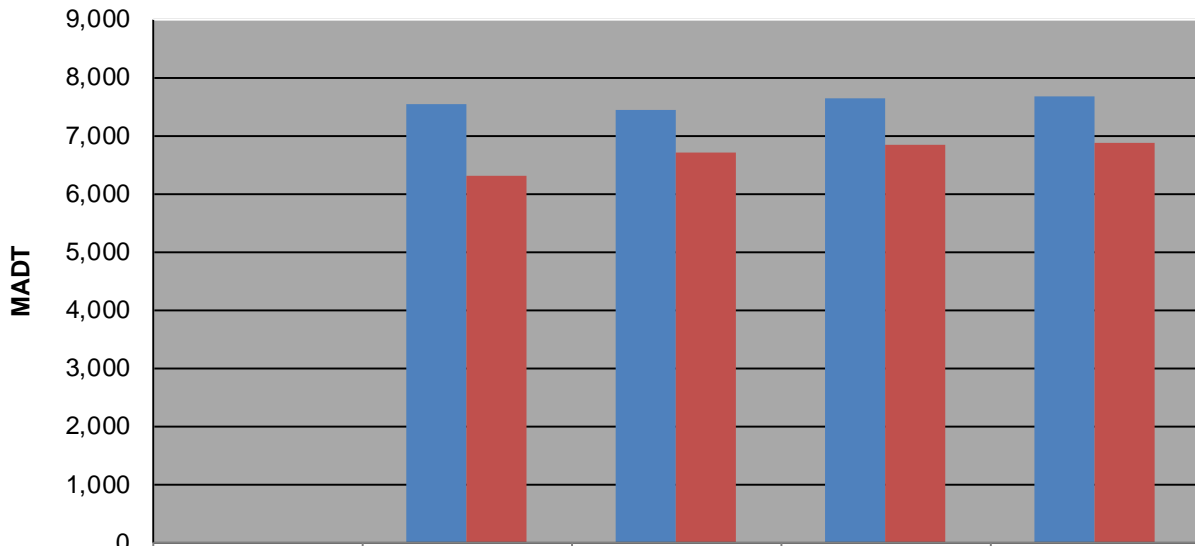
Weekday (WD)/Weekend (WE) Monthly Average Daily Traffic



| | Jan | Feb | Mar | Apr | May | Jun | Jul | Aug | Sep | Oct | Nov | Dec |
|--------|-------|-------|-------|-------|-------|--------|--------|--------|-------|-------|-------|-------|
| '12 WD | 6,568 | 6,800 | 7,036 | 7,284 | 8,356 | 12,220 | 14,828 | 9,784 | | | | |
| '12 WE | 5,874 | 6,474 | 6,712 | 6,632 | 7,558 | 13,010 | 15,258 | 14,134 | | | | |
| '13 WD | 6,186 | 6,764 | 6,902 | 6,384 | 8,460 | 9,646 | 10,192 | 9,788 | 8,558 | 7,574 | 7,534 | 6,588 |
| '13 WE | 5,390 | 6,208 | 6,378 | 5,912 | 7,460 | 10,496 | 11,694 | 10,800 | 8,264 | 7,300 | 6,318 | 6,296 |
| '14 WD | 5,972 | 6,270 | 6,210 | 6,434 | 8,262 | 9,518 | 10,196 | 10,440 | 9,044 | 8,146 | 7,434 | 7,246 |
| '14 WE | 5,214 | 5,706 | 6,224 | 6,112 | 7,360 | 10,414 | 11,624 | 10,988 | 9,034 | 8,092 | 6,702 | 6,680 |
| '15 WD | 6,630 | 6,966 | 6,916 | 7,234 | 8,932 | 9,938 | 10,682 | 10,458 | 9,590 | 8,416 | 7,626 | 7,058 |
| '15 WE | 5,700 | 6,400 | 6,586 | 6,728 | 8,076 | 11,156 | 11,638 | 11,538 | 9,646 | 8,542 | 6,848 | 6,750 |
| '16 WD | 6,286 | 6,946 | 6,832 | 7,220 | 7,312 | 8,776 | 10,718 | 10,836 | 9,640 | 8,590 | 7,676 | |
| '16 WE | 5,852 | 6,574 | 6,750 | 6,598 | 6,720 | 8,790 | 12,354 | 11,770 | 9,486 | 8,426 | 6,858 | |

Note: 'Weekday' defined as Monday-Friday, 'Weekend' defined as Saturday-Sunday

Weekday/Weekend Monthly Average Daily Traffic ('12-'16)



| | Nov-12 | Nov-13 | Nov-14 | Nov-15 | Nov-16 |
|---------|--------|--------|--------|--------|--------|
| Weekday | | 7,534 | 7,434 | 7,626 | 7,676 |
| Weekend | | 6,318 | 6,702 | 6,848 | 6,858 |