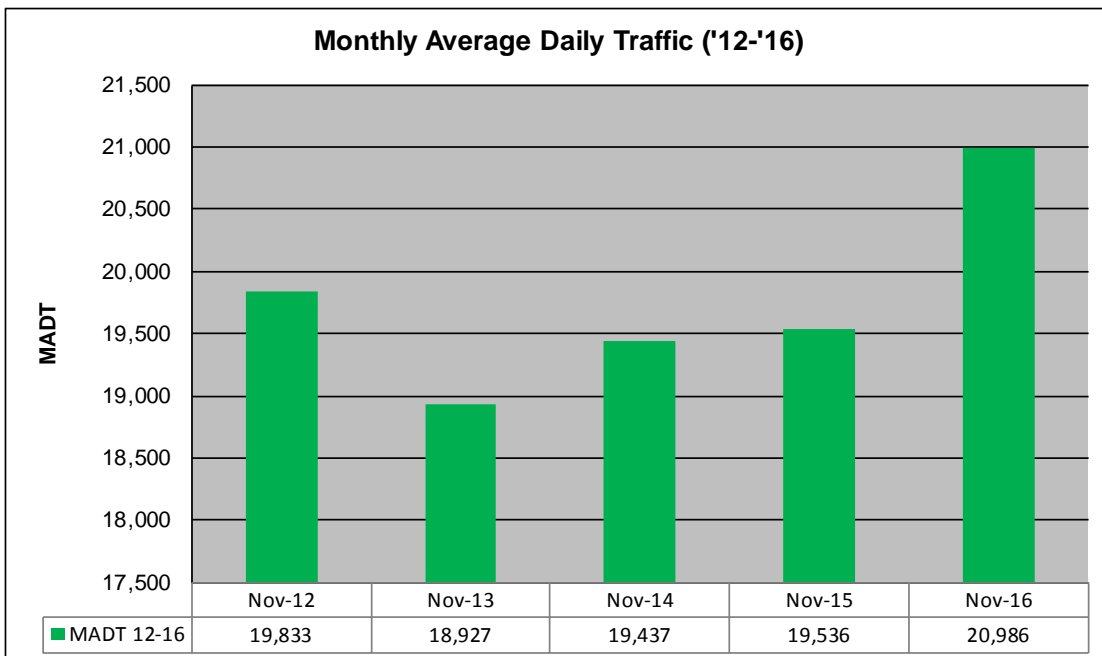
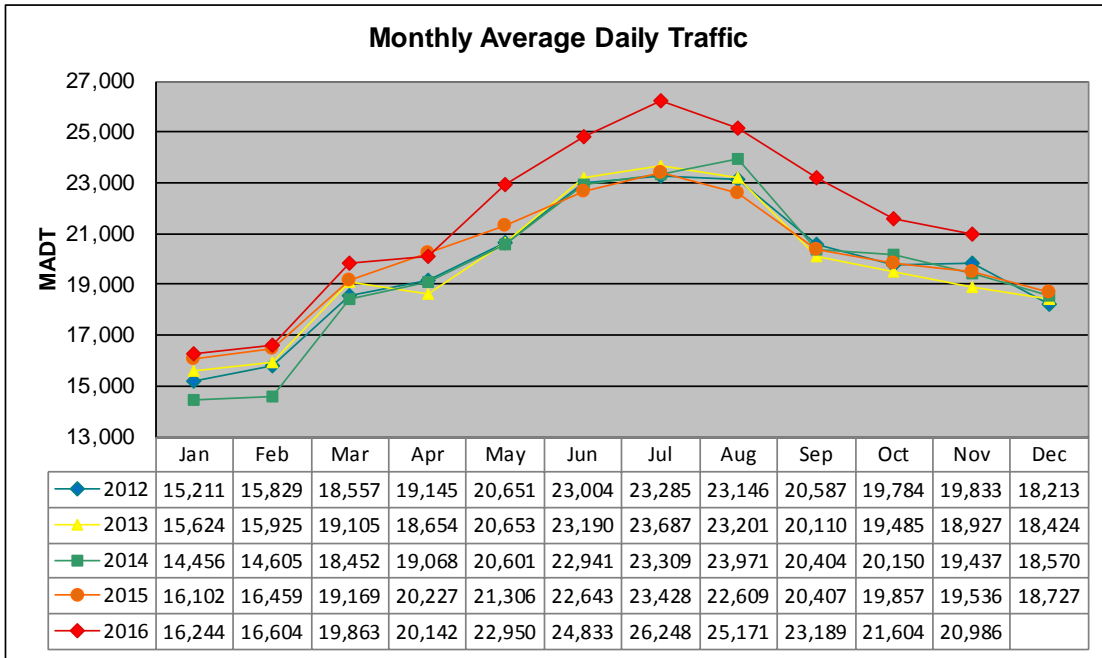


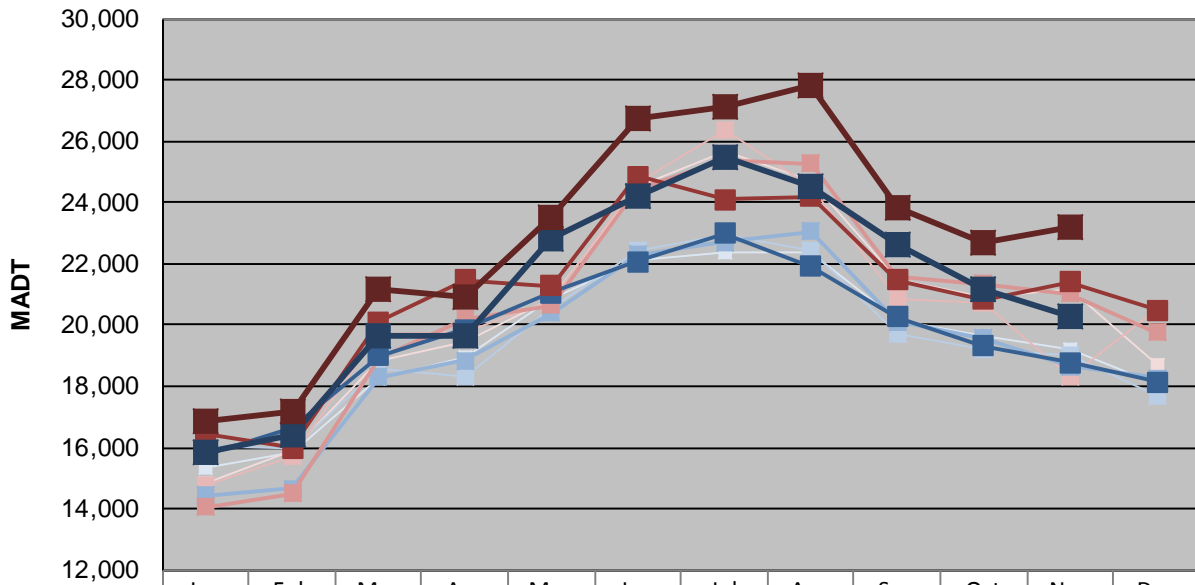
# MONTHLY REPORT, STATION NO. 26 (WIM)

## NOVEMBER 2016

Station Measurement: VOLUME/SPEED/CLASS/WEIGHT		
Route: I-35	Route Direction: N/S	Lanes: 4
County: Steele		Closest City: Ellendale
Functional Class: Rural Principal Arterial - Interstate		
Location: 3.5 MI N OF TH30, N OF ELLENDALE		
Ref Post: 030+00.100	True Mile: 30.103	Sequence No. 5707
<b>Volume: 629,580</b>		<b>MADT: 20,986</b>
<b>Weekday (M-F) MADT: 20,282</b>		<b>Weekend (Sa-Su) MADT: 23,188</b>



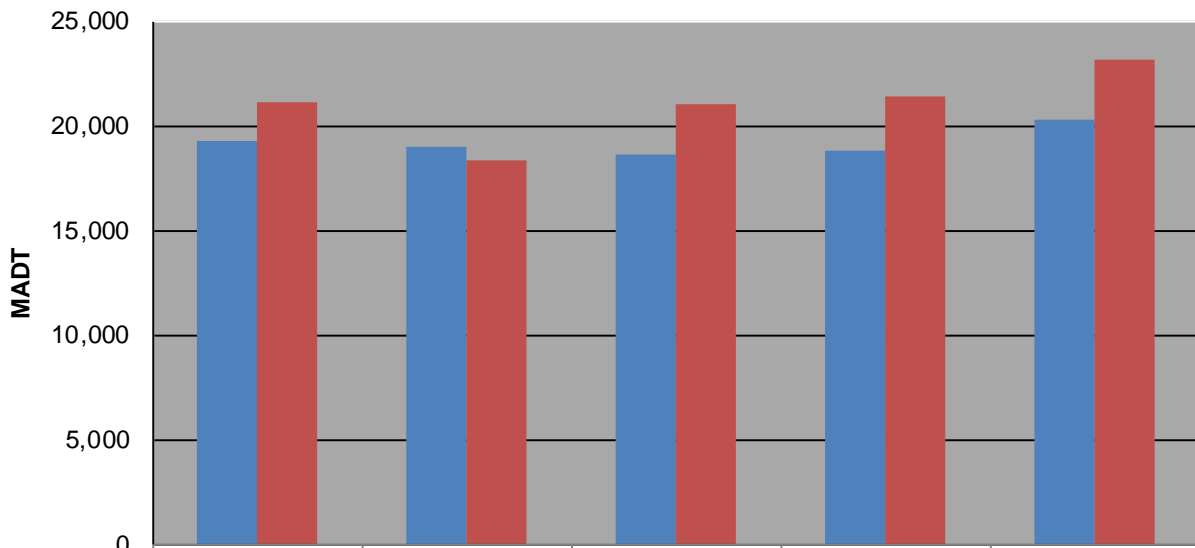
### Weekday (WD)/Weekend (WE) Monthly Average Daily Traffic



	Jan	Feb	Mar	Apr	May	Jun	Jul	Aug	Sep	Oct	Nov	Dec
'12 WD	15,374	15,880	18,258	18,960	20,840	22,122	22,366	22,386	20,138	19,666	19,232	18,090
'12 WE	14,854	15,898	18,820	19,430	20,836	24,530	25,698	24,716	21,486	20,934	21,164	18,670
'13 WD	16,032	16,006	18,544	18,352	20,506	22,456	22,958	22,426	19,714	19,238	19,038	17,658
'13 WE	14,772	15,724	19,688	19,776	20,766	24,662	26,332	24,532	20,866	20,728	18,334	20,560
'14 WD	14,448	14,648	18,298	18,856	20,390	22,296	22,692	23,042	20,094	19,582	18,642	18,284
'14 WE	14,074	14,500	18,940	20,210	20,660	24,446	25,398	25,264	21,574	21,334	21,026	19,764
'15 WD	15,786	16,646	18,988	19,864	21,050	22,058	23,002	21,918	20,280	19,314	18,768	18,134
'15 WE	16,482	15,992	20,094	21,458	21,266	24,854	24,112	24,186	21,486	20,852	21,404	20,504
'16 WD	15,830	16,432	19,650	19,652	22,846	24,194	25,474	24,554	22,642	21,178	20,282	
'16 WE	16,850	17,160	21,194	20,886	23,492	26,766	27,146	27,806	23,826	22,674	23,188	

Note: 'Weekday' defined as Monday-Friday, 'Weekend' defined as Saturday-Sunday

### Weekday/Weekend Monthly Average Daily Traffic ('12-'16)



	Nov-12	Nov-13	Nov-14	Nov-15	Nov-16
Weekday	19,232	19,038	18,642	18,768	20,282
Weekend	21,164	18,334	21,026	21,404	23,188