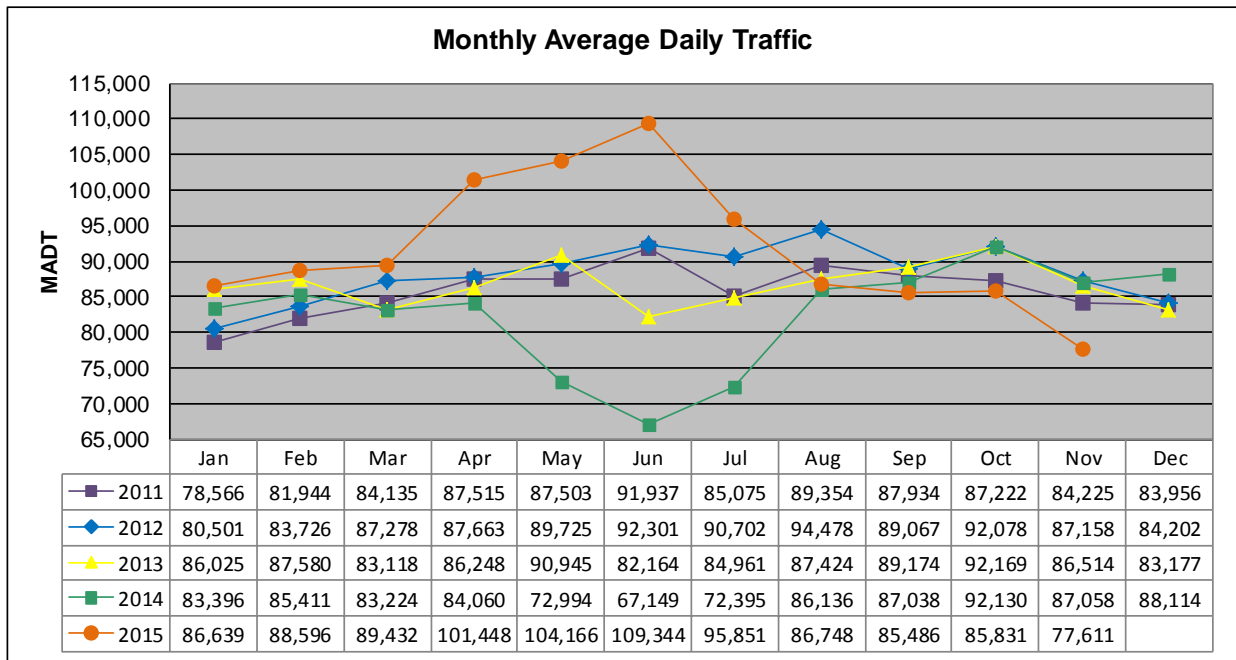


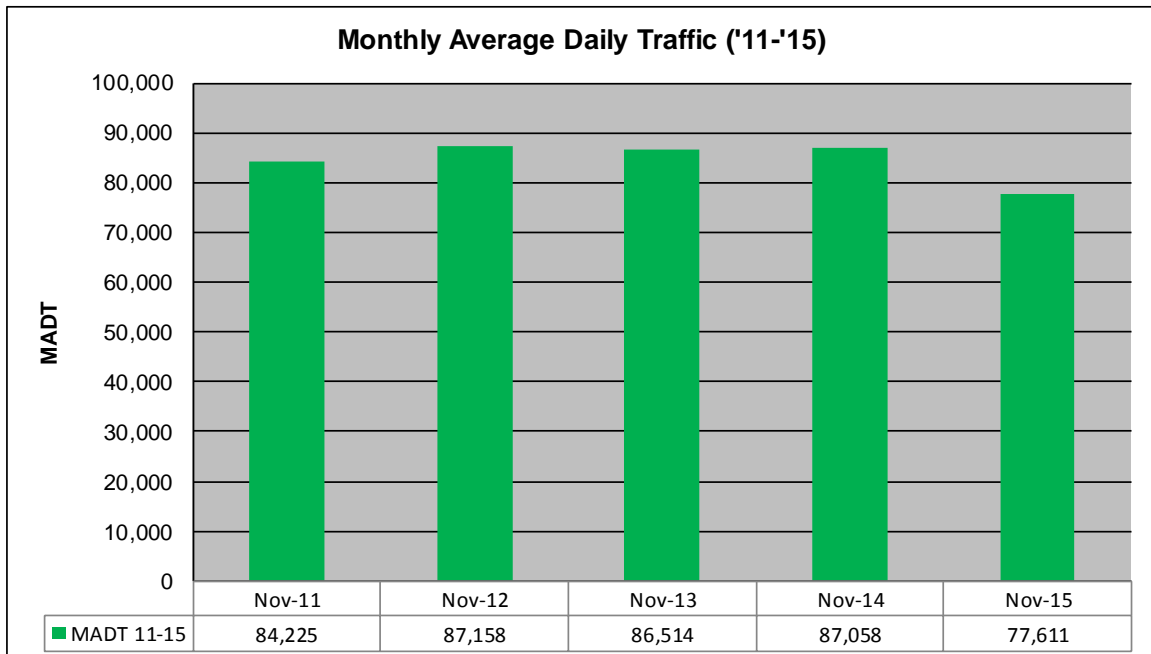
MONTHLY REPORT, STATION NO. 405 (ATR)

NOVEMBER 2015

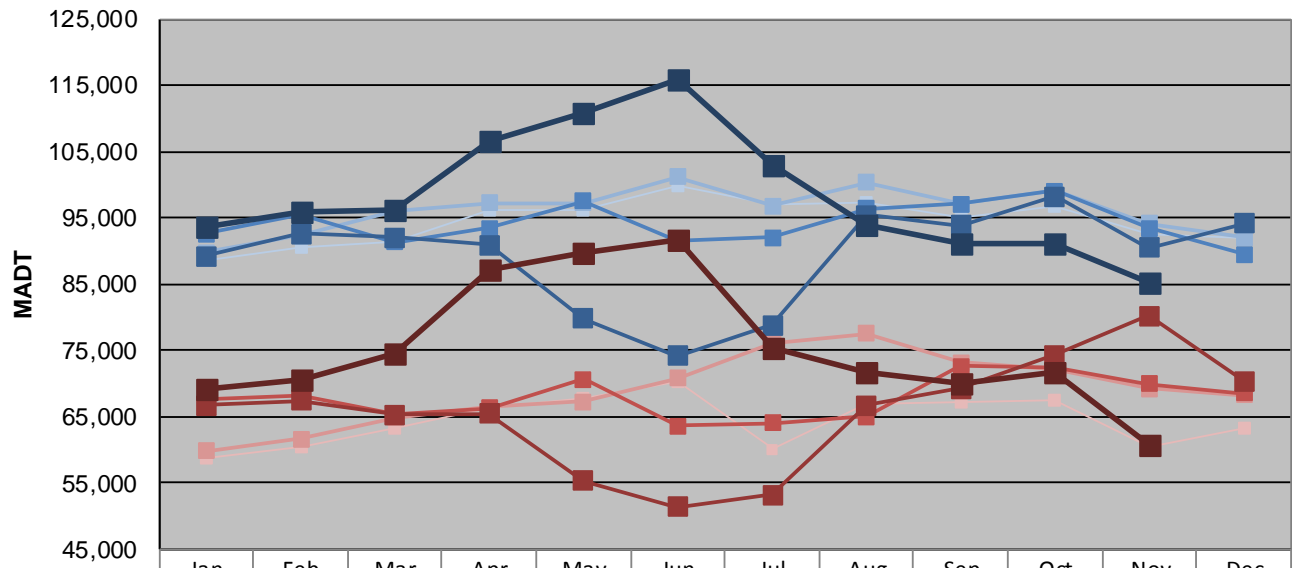
| | | |
|--|----------------------|-------------------------------------|
| Station Measurement: VOLUME | | |
| Route: TH 169 | Route Direction: N/S | Lanes: 4 |
| County: Hennepin | | Closest City: St Louis Park |
| Functional Class: Urban Principal Arterial - Other Freeways or Expressways | | |
| Location: N OF MSAS296 (CEDAR LAKE RD) IN ST LOUIS PARK | | |
| Ref Post: 128+00.870 | True Mile: 126.71 | Sequence No. 9883 |
| Volume: 2,328,318 | | MADT: 77,611 |
| Weekday (M-F) MADT: 85,098 | | Weekend (Sa-Su) MADT: 60,778 |



Note: Decrease in traffic June to August 2013, May to July 2014, and November 2015 due to construction on TH 169...
 Increase in traffic April to July 2015 due to detour from TH 100



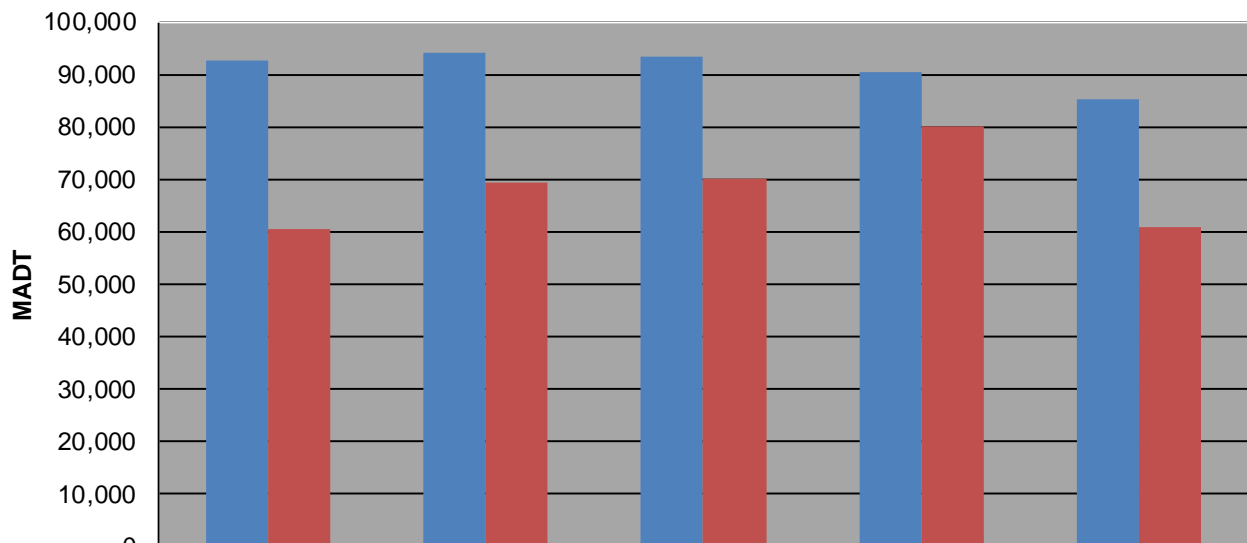
Weekday (WD)/Weekend (WE) Monthly Average Daily Traffic



| | Jan | Feb | Mar | Apr | May | Jun | Jul | Aug | Sep | Oct | Nov | Dec |
|--------|--------|--------|--------|---------|---------|---------|---------|---------|--------|--------|--------|--------|
| '11 WD | 88,434 | 90,560 | 91,470 | 96,166 | 96,254 | 99,718 | 96,888 | 97,362 | 95,130 | 96,786 | 92,618 | 91,922 |
| '11 WE | 58,664 | 60,376 | 63,262 | 66,348 | 67,768 | 70,182 | 60,090 | 66,796 | 67,230 | 67,548 | 60,464 | 63,144 |
| '12 WD | 89,714 | 92,288 | 95,978 | 97,246 | 97,256 | 101,148 | 96,822 | 100,274 | 97,030 | 99,116 | 94,060 | 92,002 |
| '12 WE | 59,788 | 61,630 | 64,860 | 66,394 | 67,284 | 70,722 | 76,130 | 77,458 | 73,144 | 72,218 | 69,248 | 68,238 |
| '13 WD | 92,596 | 95,332 | 91,314 | 93,474 | 97,552 | 91,436 | 91,964 | 96,318 | 97,086 | 99,082 | 93,484 | 89,416 |
| '13 WE | 67,682 | 68,204 | 65,260 | 66,224 | 70,580 | 63,622 | 63,984 | 65,062 | 72,598 | 72,330 | 69,892 | 68,544 |
| '14 WD | 89,146 | 92,618 | 92,010 | 90,872 | 79,712 | 74,122 | 78,754 | 95,444 | 93,860 | 98,234 | 90,472 | 94,126 |
| '14 WE | 66,634 | 67,396 | 65,258 | 65,418 | 55,340 | 51,354 | 53,202 | 66,702 | 69,192 | 74,266 | 80,232 | 70,394 |
| '15 WD | 93,690 | 95,796 | 96,240 | 106,676 | 110,710 | 115,996 | 102,972 | 94,048 | 91,062 | 91,164 | 85,098 | |
| '15 WE | 69,256 | 70,598 | 74,480 | 87,124 | 89,608 | 91,604 | 75,216 | 71,574 | 69,916 | 71,792 | 60,778 | |

Note: 'Weekday' defined as Monday-Friday, 'Weekend' defined as Saturday-Sunday

Weekday/Weekend Monthly Average Daily Traffic ('11-'15)



| | Nov-11 | Nov-12 | Nov-13 | Nov-14 | Nov-15 |
|---------|--------|--------|--------|--------|--------|
| Weekday | 92,618 | 94,060 | 93,484 | 90,472 | 85,098 |
| Weekend | 60,464 | 69,248 | 69,892 | 80,232 | 60,778 |