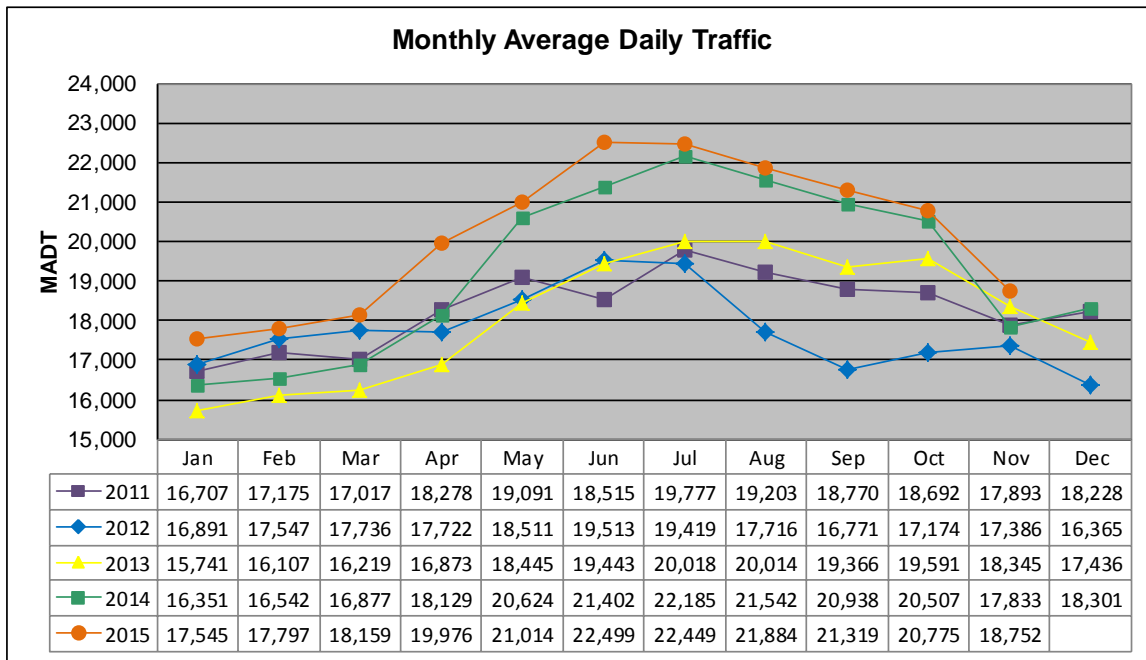


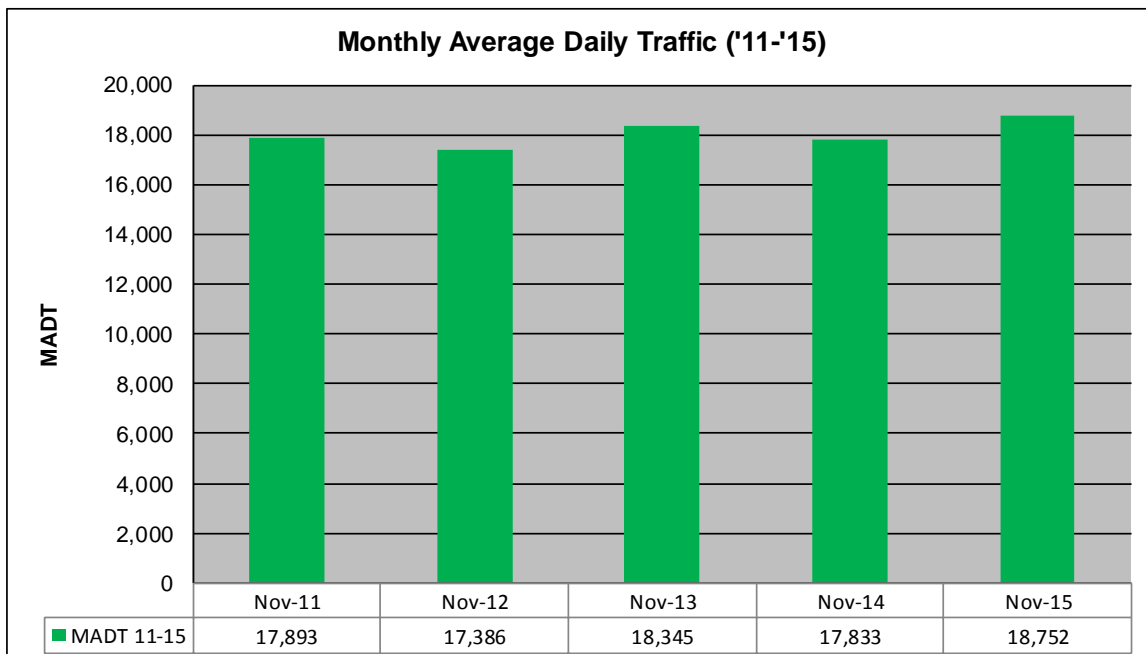
MONTHLY REPORT, STATION NO. 388 (ATR)

NOVEMBER 2015

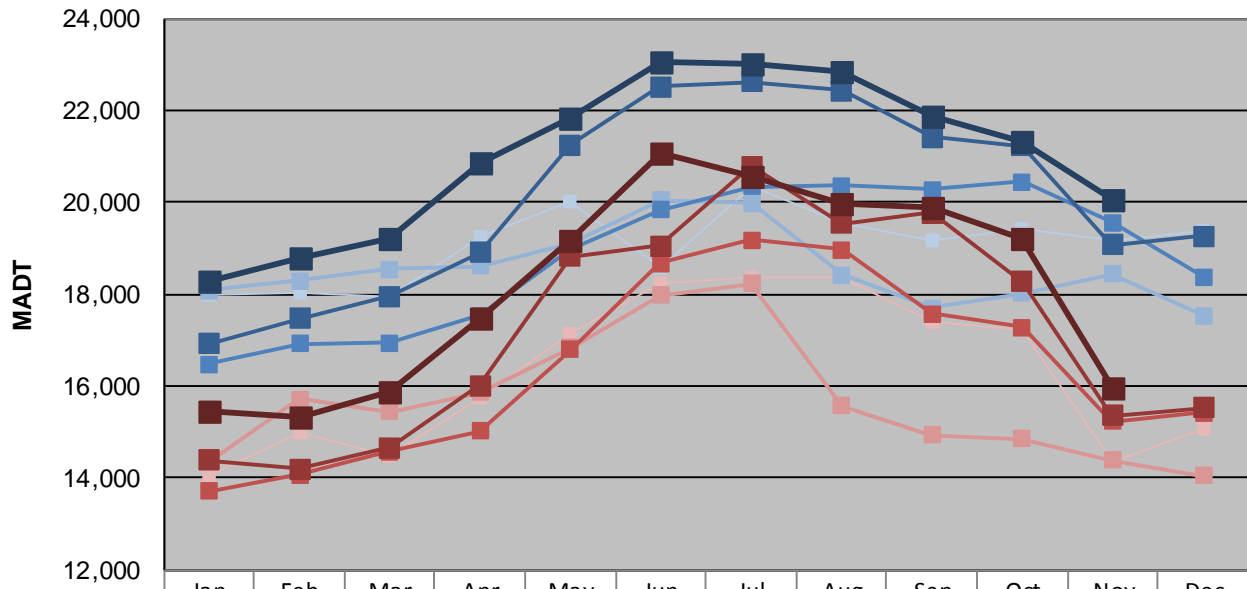
Station Measurement: VOLUME/SPEED/CLASS		
Route: TH 8	Route Direction: N/S	Lanes: 2
County: Chisago	Closest City: Forest Lake	
Functional Class: Urban Other Principal Arterial		
Location: E OF MSAS121 (GREENWAY RD), N OF FOREST LAKE		
Ref Post: 002+00.330	True Mile: 2.282	Sequence No. 6783
Volume: 562,547		MADT: 18,752
Weekday (M-F) MADT: 20,050		Weekend (Sa-Su) MADT: 15,962



Note: Decrease in traffic June 2011 and September 2012 due to construction on TH 8... Increase in traffic August/September 2013 and July to September 2014 due to detour from TH 61



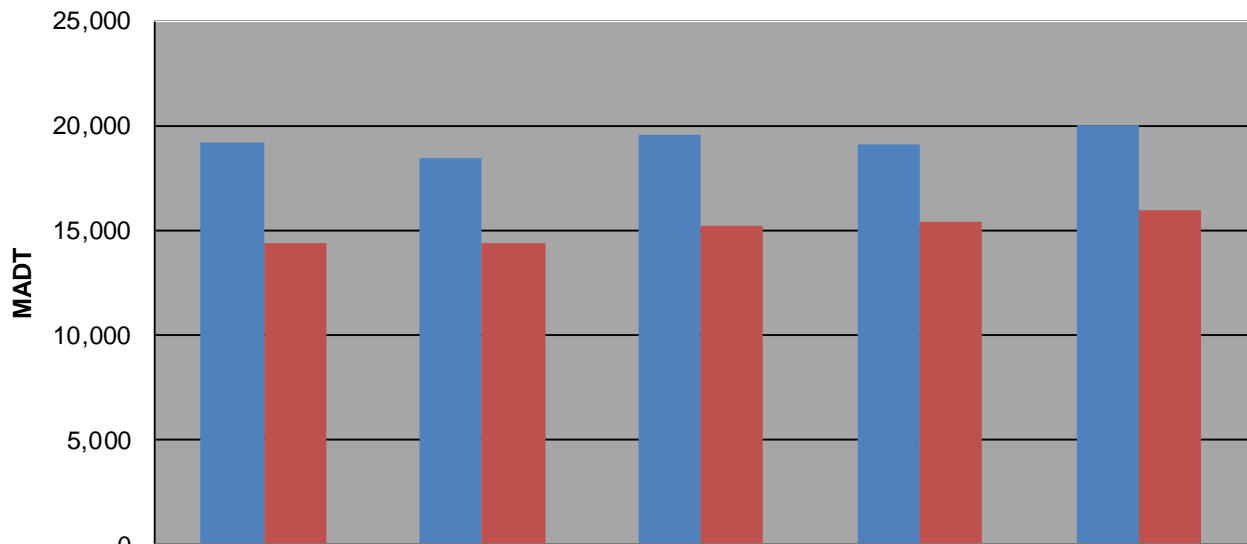
Weekday (WD)/Weekend (WE) Monthly Average Daily Traffic



	Jan	Feb	Mar	Apr	May	Jun	Jul	Aug	Sep	Oct	Nov	Dec
'11 WD	18,004	18,040	17,934	19,254	20,006	18,574	20,372	19,538	19,162	19,412	19,160	19,394
'11 WE	14,076	14,986	14,478	15,730	17,126	18,224	18,378	18,358	17,400	17,238	14,352	15,080
'12 WD	18,072	18,302	18,538	18,602	19,116	20,046	19,976	18,418	17,692	18,020	18,444	17,530
'12 WE	14,352	15,712	15,434	15,862	16,842	17,972	18,224	15,576	14,928	14,850	14,394	14,060
'13 WD	16,484	16,922	16,936	17,534	18,974	19,824	20,336	20,352	20,274	20,444	19,564	18,380
'13 WE	13,708	14,072	14,568	15,022	16,800	18,682	19,182	18,974	17,580	17,278	15,242	15,418
'14 WD	16,928	17,478	17,956	18,902	21,238	22,506	22,626	22,430	21,418	21,230	19,070	19,268
'14 WE	14,390	14,202	14,656	16,012	18,826	19,062	20,778	19,548	19,772	18,264	15,356	15,534
'15 WD	18,280	18,784	19,222	20,876	21,818	23,062	23,024	22,826	21,882	21,306	20,050	
'15 WE	15,458	15,332	15,878	17,498	19,152	21,066	20,572	19,990	19,894	19,202	15,962	

Note: 'Weekday' defined as Monday-Friday, 'Weekend' defined as Saturday-Sunday

Weekday/Weekend Monthly Average Daily Traffic ('11-'15)



	Nov-11	Nov-12	Nov-13	Nov-14	Nov-15
Weekday	19,160	18,444	19,564	19,070	20,050
Weekend	14,352	14,394	15,242	15,356	15,962