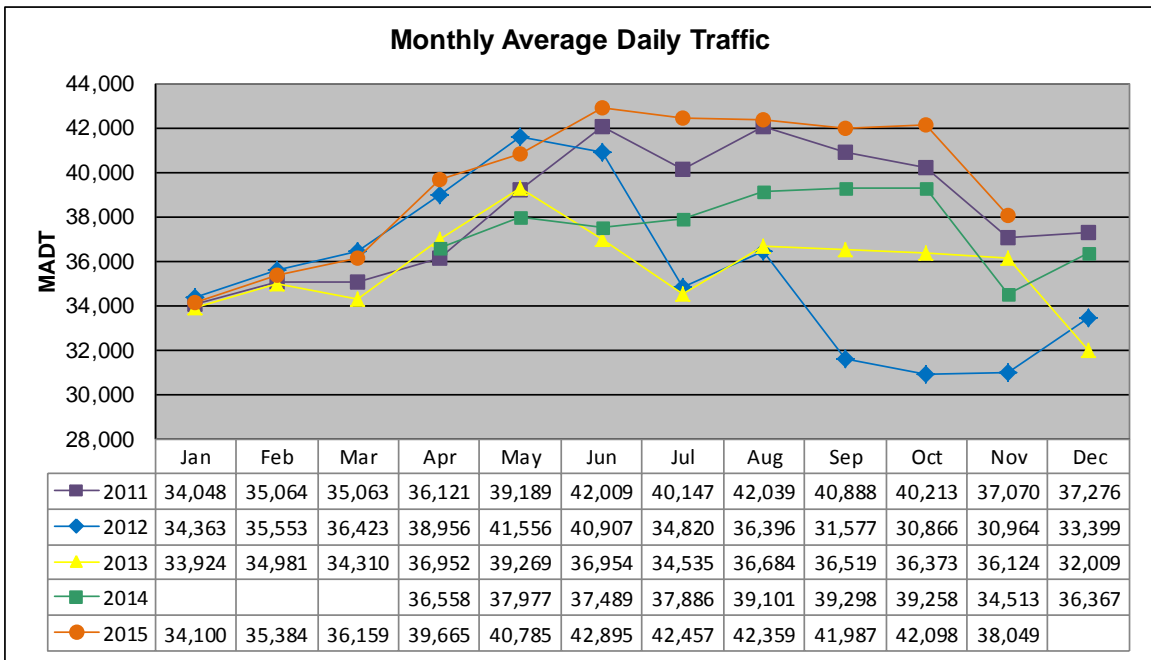


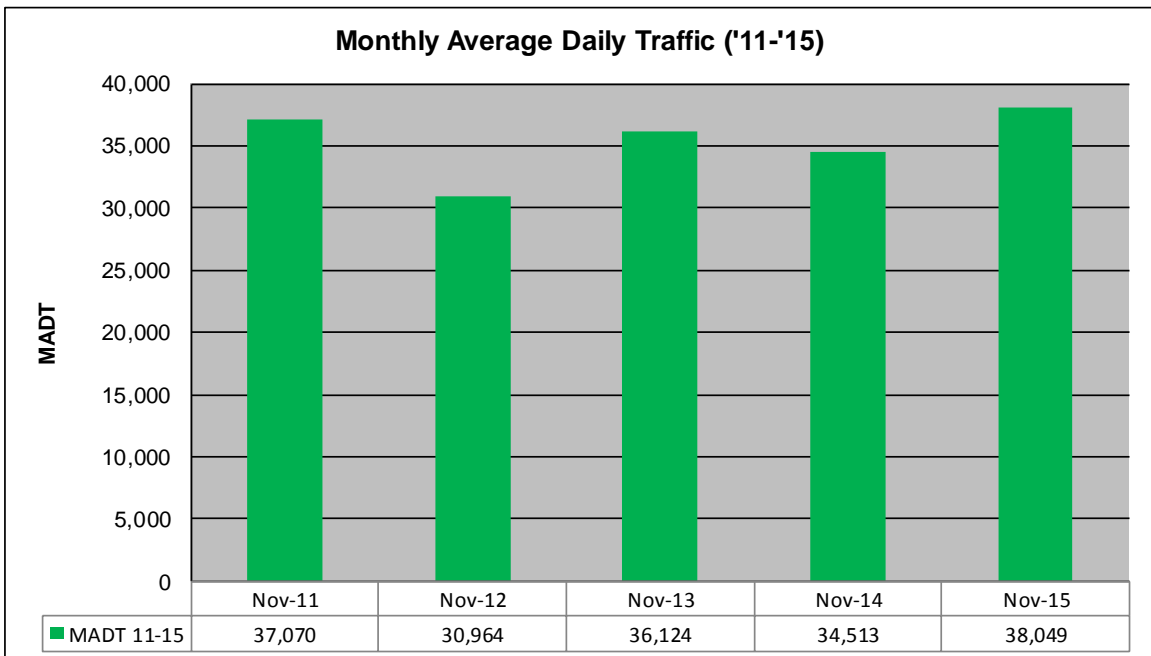
# MONTHLY REPORT, STATION NO. 36 (WIM)

## NOVEMBER 2015

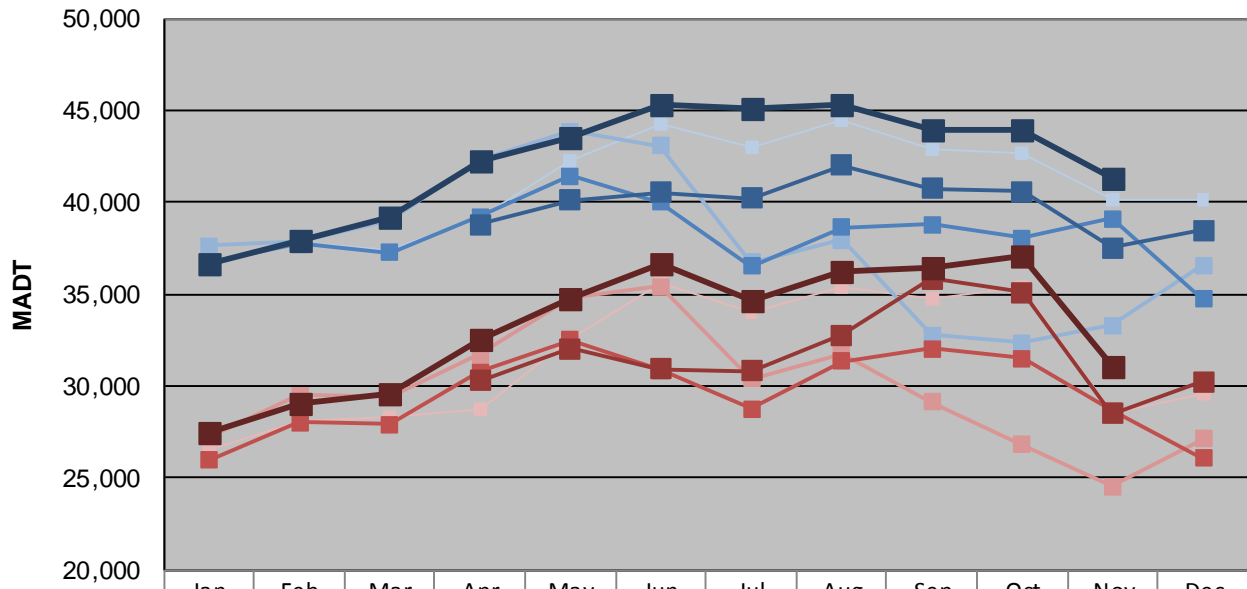
|  |                      |                                     |
|--|----------------------|-------------------------------------|
| Station Measurement: VOLUME/SPEED/CLASS/WEIGHT             |                      |                                     |
| Route: TH 36   | Route Direction: E/W | Lanes: 4                            |
| County: Washington   |                      | Closest City: Lake Elmo             |
| Functional Class: Urban Other Principal Arterial           |                      |                                     |
| Location: .7 MI W OF CSAH17 (LAKE ELMO AVE N) IN LAKE ELMO |                      |                                     |
| Ref Post: 014+00.983                                       | True Mile: 15.022    | Sequence No. 10237                  |
| <b>Volume: 1,141,473</b>                                   |                      | <b>MADT: 38,049</b>                 |
| <b>Weekday (M-F) MADT: 41,320</b>                          |                      | <b>Weekend (Sa-Su) MADT: 31,028</b> |



Note: Decrease in traffic July to November 2012 and June to October 2013 due to construction on TH 36... Increase in traffic June/July 2015 due to detours... No data January to March 2014 due to site communication issues



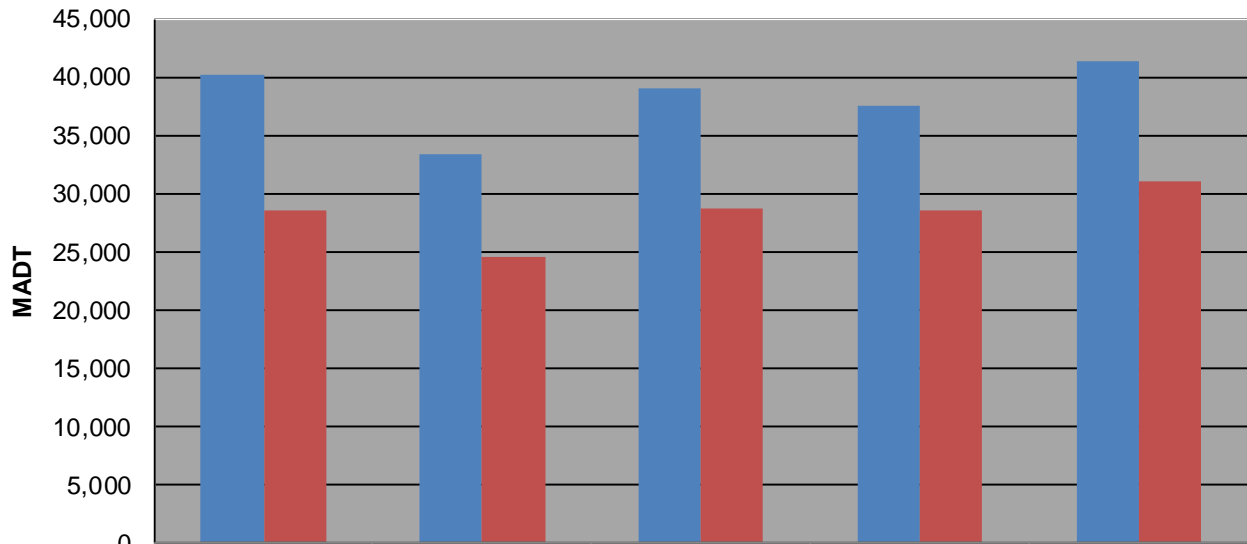
### Weekday (WD)/Weekend (WE) Monthly Average Daily Traffic



|        | Jan    | Feb    | Mar    | Apr    | May    | Jun    | Jul    | Aug    | Sep    | Oct    | Nov    | Dec    |
|--------|--------|--------|--------|--------|--------|--------|--------|--------|--------|--------|--------|--------|
| '11 WD | 37,762 | 37,868 | 37,442 | 39,140 | 42,238 | 44,278 | 43,012 | 44,476 | 42,930 | 42,636 | 40,122 | 40,136 |
| '11 WE | 26,542 | 28,054 | 28,308 | 28,732 | 32,490 | 35,618 | 33,986 | 35,436 | 34,730 | 35,378 | 28,488 | 29,632 |
| '12 WD | 37,628 | 37,912 | 39,018 | 42,298 | 43,856 | 43,042 | 36,742 | 37,956 | 32,800 | 32,330 | 33,298 | 36,576 |
| '12 WE | 27,234 | 29,510 | 29,464 | 31,718 | 34,812 | 35,436 | 30,384 | 31,700 | 29,130 | 26,834 | 24,532 | 27,104 |
| '13 WD | 36,708 | 37,754 | 37,242 | 39,212 | 41,436 | 39,990 | 36,500 | 38,638 | 38,780 | 38,044 | 39,094 | 34,722 |
| '13 WE | 25,992 | 28,050 | 27,924 | 30,754 | 32,510 | 30,882 | 28,790 | 31,332 | 32,020 | 31,522 | 28,646 | 26,068 |
| '14 WD |        |        |        | 38,810 | 40,104 | 40,524 | 40,210 | 42,016 | 40,748 | 40,584 | 37,514 | 38,488 |
| '14 WE |        |        |        | 30,304 | 32,034 | 30,912 | 30,830 | 32,790 | 35,832 | 35,116 | 28,512 | 30,264 |
| '15 WD | 36,672 | 37,914 | 39,140 | 42,232 | 43,490 | 45,292 | 45,064 | 45,336 | 43,966 | 43,926 | 41,320 |        |
| '15 WE | 27,510 | 29,060 | 29,552 | 32,540 | 34,790 | 36,610 | 34,628 | 36,274 | 36,420 | 37,098 | 31,028 |        |

Note: 'Weekday' defined as Monday-Friday, 'Weekend' defined as Saturday-Sunday

### Weekday/Weekend Monthly Average Daily Traffic ('11-'15)



|         | Nov-11 | Nov-12 | Nov-13 | Nov-14 | Nov-15 |
|---------|--------|--------|--------|--------|--------|
| Weekday | 40,122 | 33,298 | 39,094 | 37,514 | 41,320 |
| Weekend | 28,488 | 24,532 | 28,646 | 28,512 | 31,028 |