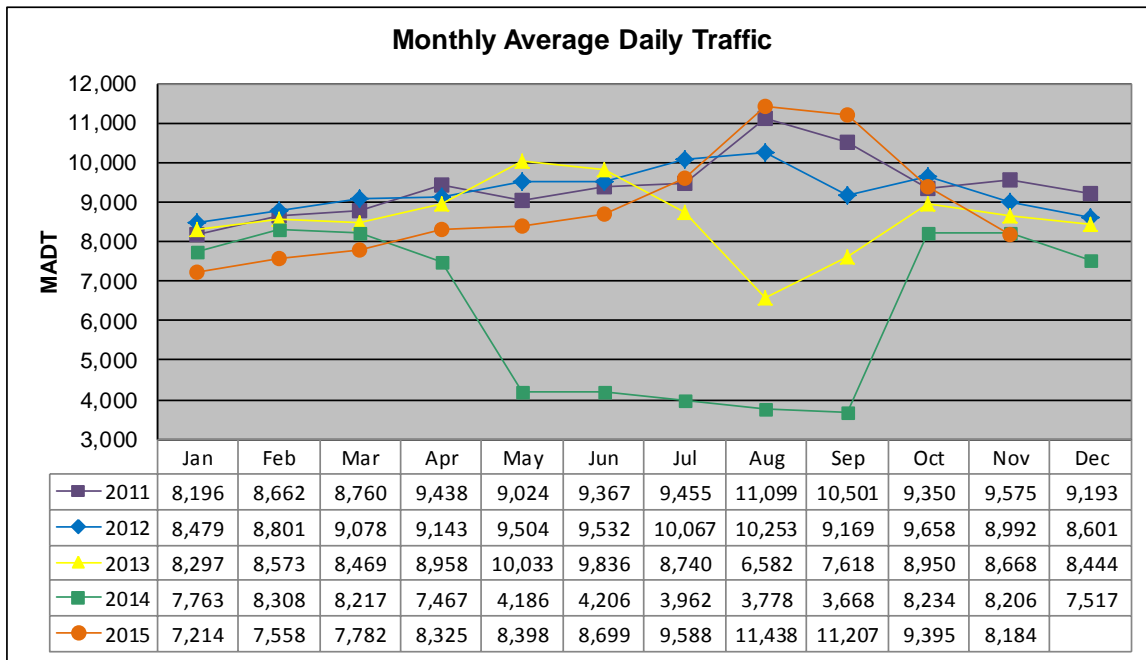


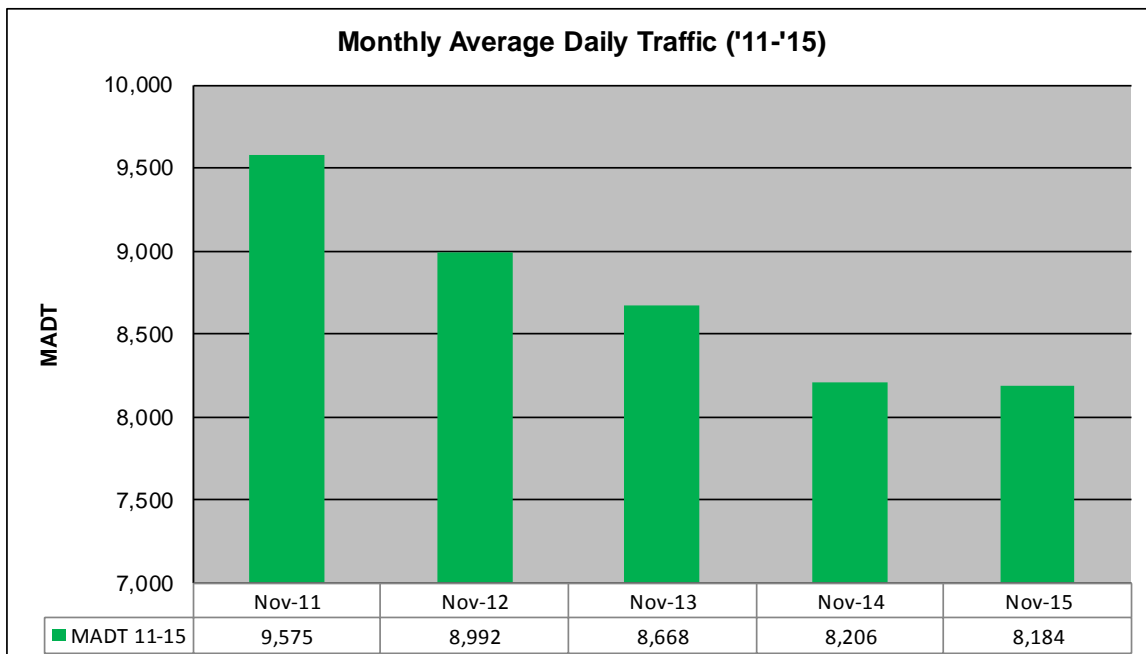
MONTHLY REPORT, STATION NO. 28 (ATR)

NOVEMBER 2015

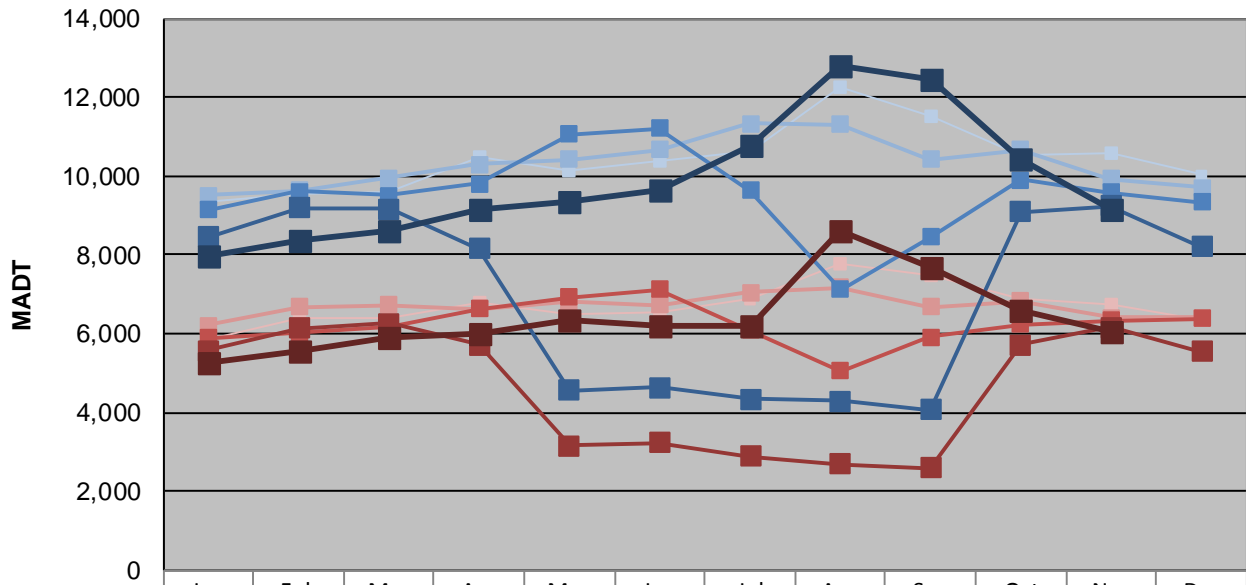
Station Measurement: VOLUME/SPEED/CLASS		
Route: MSAS 114	Route Direction: E/W	Lanes: 2
County: Stearns	Closest City: St Cloud	
Functional Class: Urban Minor Arterial		
Location: W OF 25TH AVE N IN ST CLOUD		
Ref Post: 000+00.750	True Mile: 0.75	Sequence No. 9813
Volume: 245,528		MADT: 8,184
Weekday (M-F) MADT: 9,142		Weekend (Sa-Su) MADT: 6,032



Note: Increase in traffic August/September 2011 due to detour from TH 23... Decrease in traffic August/September 2013 and April to September 2014 due to construction on TH 15



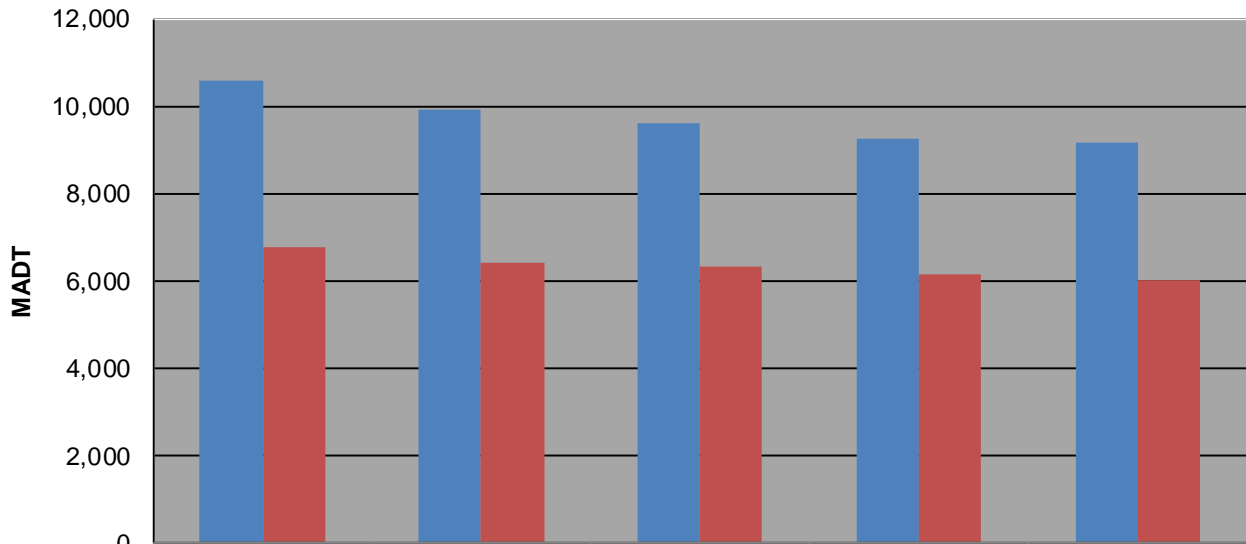
Weekday (WD)/Weekend (WE) Monthly Average Daily Traffic



	Jan	Feb	Mar	Apr	May	Jun	Jul	Aug	Sep	Oct	Nov	Dec
'11 WD	9,338	9,554	9,596	10,460	10,148	10,368	10,638	12,268	11,522	10,526	10,600	10,020
'11 WE	5,836	6,404	6,384	6,812	6,470	6,556	6,872	7,768	7,486	6,906	6,758	6,340
'12 WD	9,502	9,644	9,950	10,302	10,424	10,660	11,340	11,296	10,418	10,656	9,934	9,694
'12 WE	6,212	6,666	6,728	6,616	6,806	6,738	7,036	7,166	6,672	6,826	6,404	6,398
'13 WD	9,146	9,598	9,512	9,808	11,064	11,200	9,636	7,132	8,440	9,896	9,592	9,344
'13 WE	5,890	6,010	6,196	6,634	6,912	7,110	6,094	5,060	5,914	6,244	6,324	6,392
'14 WD	8,452	9,182	9,162	8,150	4,564	4,636	4,340	4,288	4,064	9,080	9,230	8,200
'14 WE	5,576	6,126	6,246	5,704	3,156	3,224	2,874	2,688	2,594	5,728	6,158	5,542
'15 WD	7,960	8,352	8,616	9,166	9,340	9,632	10,754	12,792	12,474	10,450	9,142	
'15 WE	5,274	5,574	5,890	5,998	6,338	6,176	6,172	8,602	7,676	6,602	6,032	

Note: 'Weekday' defined as Monday-Friday, 'Weekend' defined as Saturday-Sunday

Weekday/Weekend Monthly Average Daily Traffic ('11-'15)



	Nov-11	Nov-12	Nov-13	Nov-14	Nov-15
Weekday	10,600	9,934	9,592	9,230	9,142
Weekend	6,758	6,404	6,324	6,158	6,032