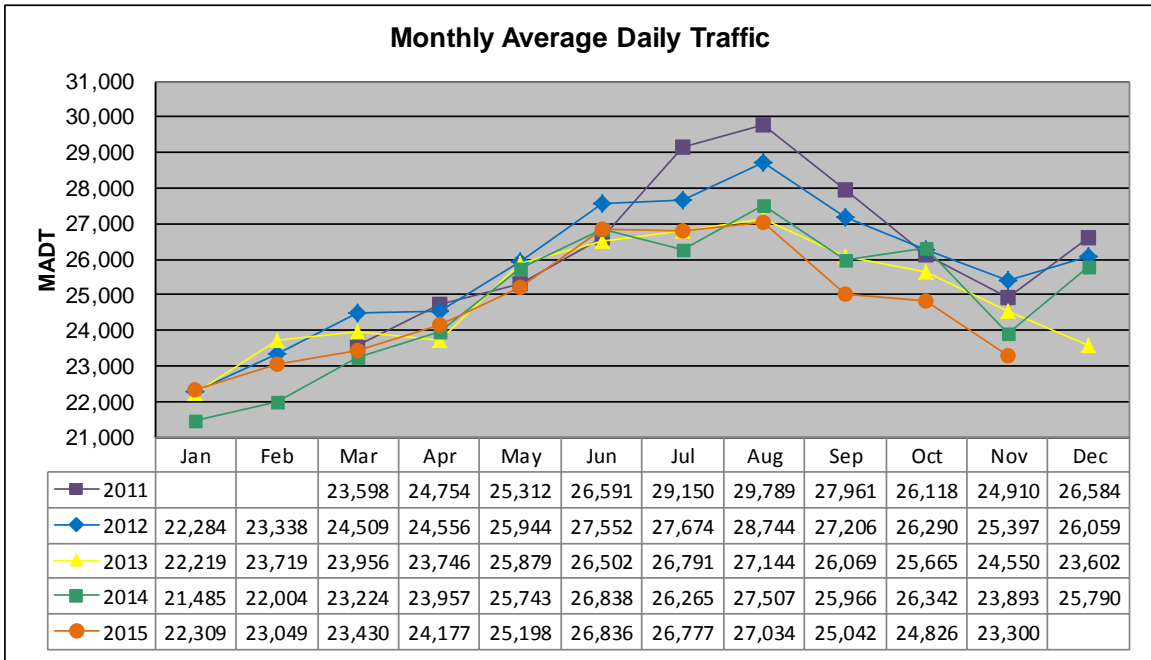


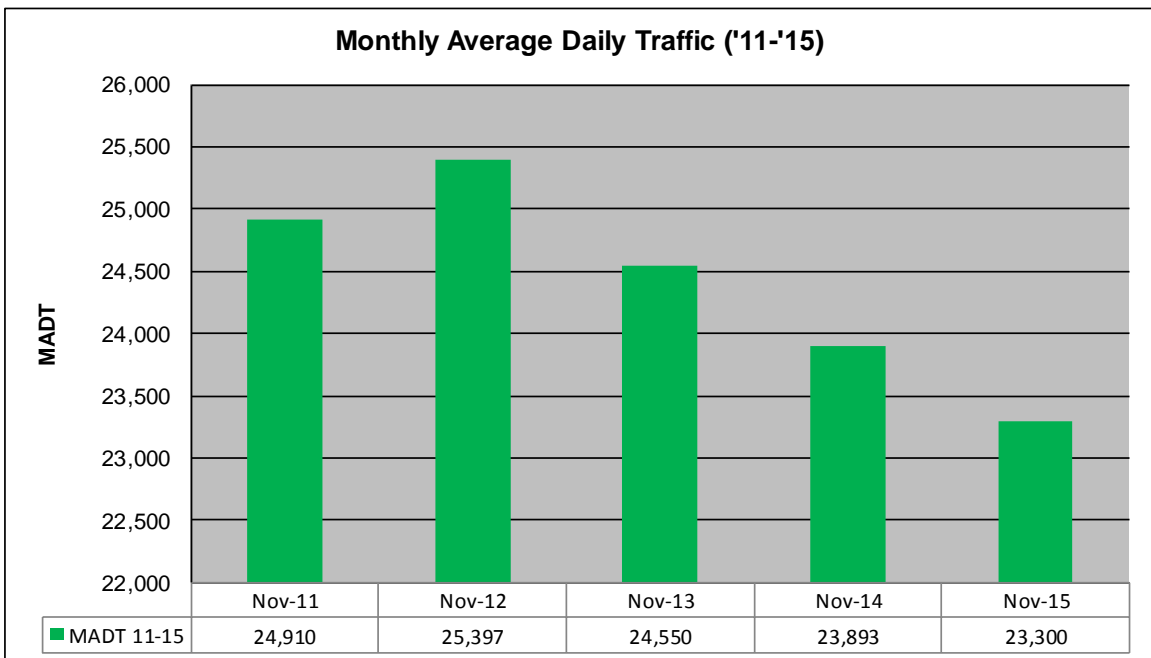
MONTHLY REPORT, STATION NO. 110 (ATR)

NOVEMBER 2015

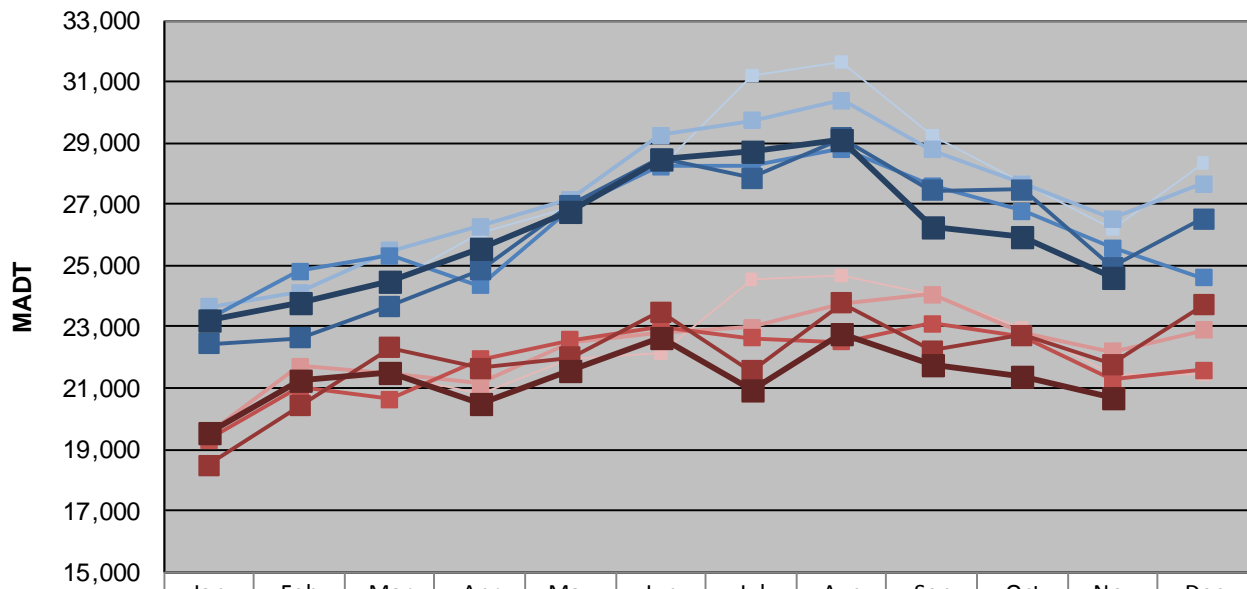
Station Measurement: VOLUME		
Route: TH 53	Route Direction: N/S	Lanes: 4
County: St Louis	Closest City: Duluth	
Functional Class: Urban Other Principal Arterial		
Location: SE OF CSAH6 (MAPLE GROVE RD) IN DULUTH		
Ref Post: 005+00.000	True Mile: 6.129	Sequence No. 9827
Volume: 698,995		MADT: 23,300
Weekday (M-F) MADT: 24,636		Weekend (Sa-Su) MADT: 20,670



Note: No data January/February 2011 due to sensors destroyed by construction



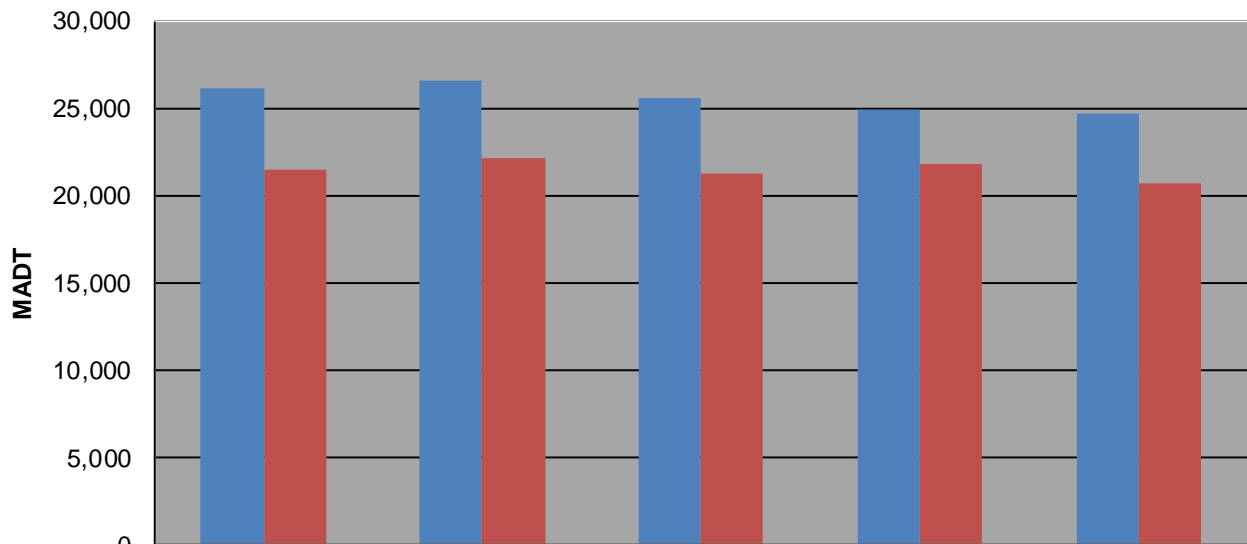
Weekday (WD)/Weekend (WE) Monthly Average Daily Traffic



	Jan	Feb	Mar	Apr	May	Jun	Jul	Aug	Sep	Oct	Nov	Dec
'11 WD			24,442	26,078	26,914	28,220	31,214	31,618	29,224	27,690	26,170	28,352
'11 WE			21,462	20,822	21,980	22,136	24,544	24,660	24,016	22,956	21,422	21,420
'12 WD	23,632	24,120	25,494	26,276	27,158	29,258	29,718	30,394	28,780	27,664	26,524	27,662
'12 WE	19,536	21,706	21,474	21,136	22,510	22,798	22,988	23,756	24,058	22,784	22,184	22,884
'13 WD	23,276	24,804	25,332	24,360	26,868	28,252	28,236	28,798	27,596	26,790	25,574	24,608
'13 WE	19,322	21,012	20,654	21,928	22,556	23,004	22,620	22,520	23,094	22,688	21,280	21,590
'14 WD	22,440	22,636	23,668	24,858	26,958	28,496	27,864	29,156	27,448	27,488	24,950	26,526
'14 WE	18,486	20,428	22,322	21,666	21,986	23,498	21,562	23,786	22,210	22,738	21,782	23,718
'15 WD	23,212	23,760	24,462	25,534	26,760	28,460	28,724	29,090	26,250	25,934	24,636	
'15 WE	19,546	21,272	21,506	20,504	21,592	22,644	20,958	22,782	21,788	21,380	20,670	

Note: 'Weekday' defined as Monday-Friday, 'Weekend' defined as Saturday-Sunday

Weekday/Weekend Monthly Average Daily Traffic ('11-'15)



	Nov-11	Nov-12	Nov-13	Nov-14	Nov-15
Weekday	26,170	26,524	25,574	24,950	24,636
Weekend	21,422	22,184	21,280	21,782	20,670