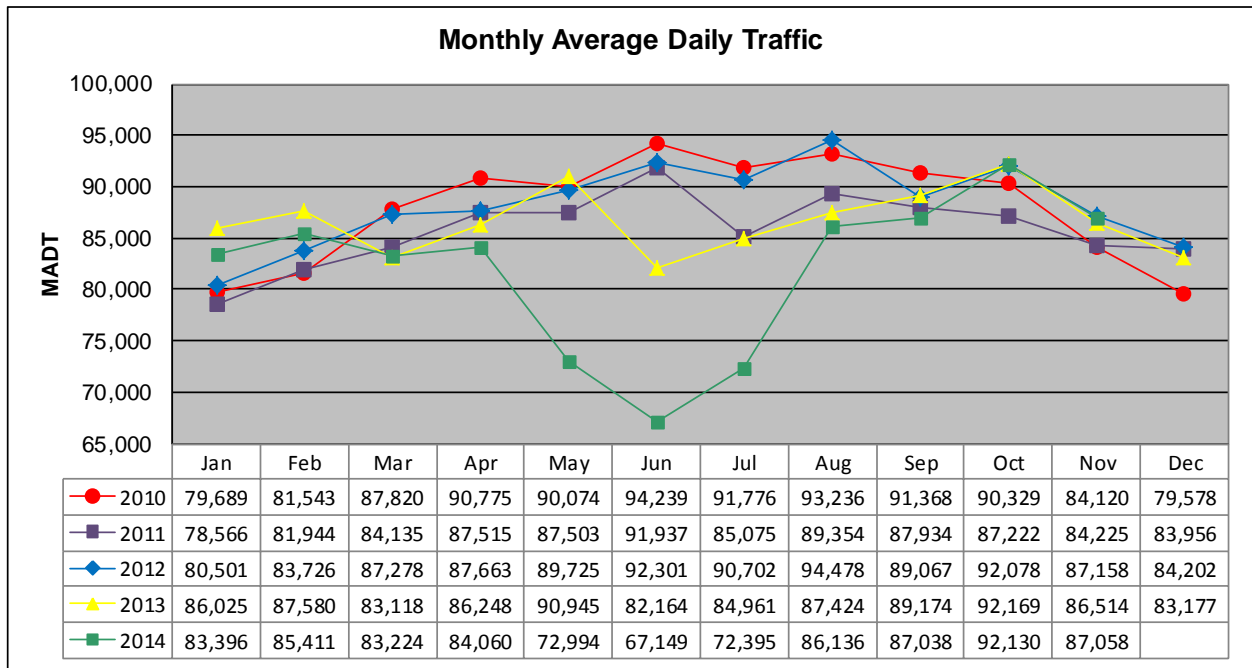


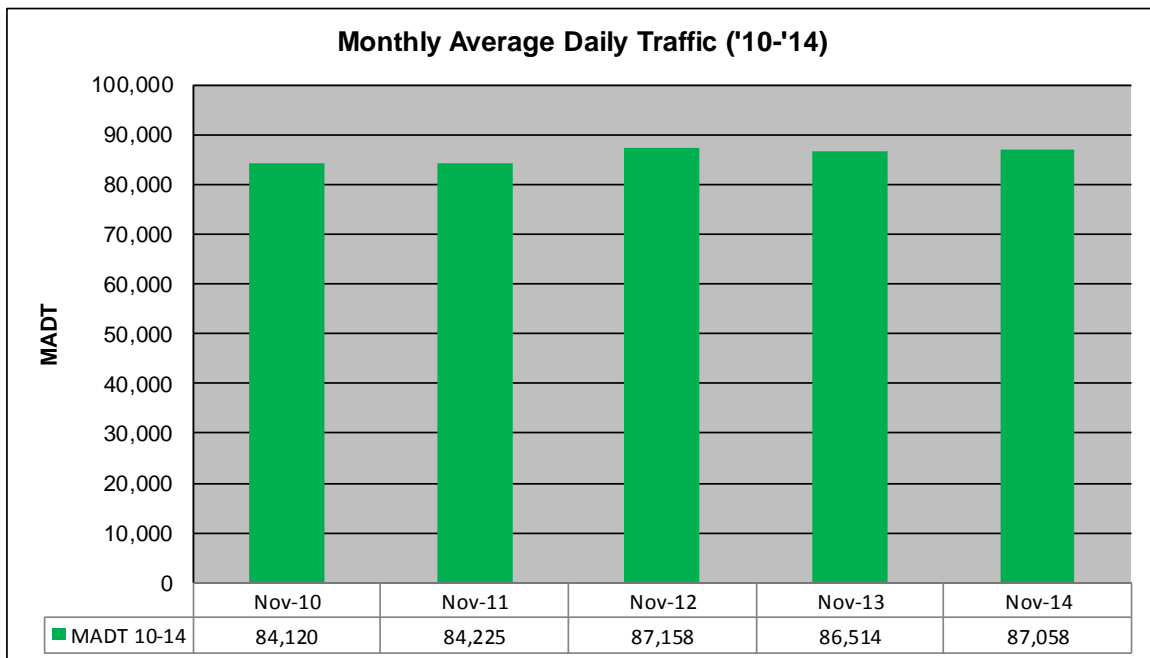
MONTHLY REPORT, STATION NO. 405 (ATR)

NOVEMBER 2014

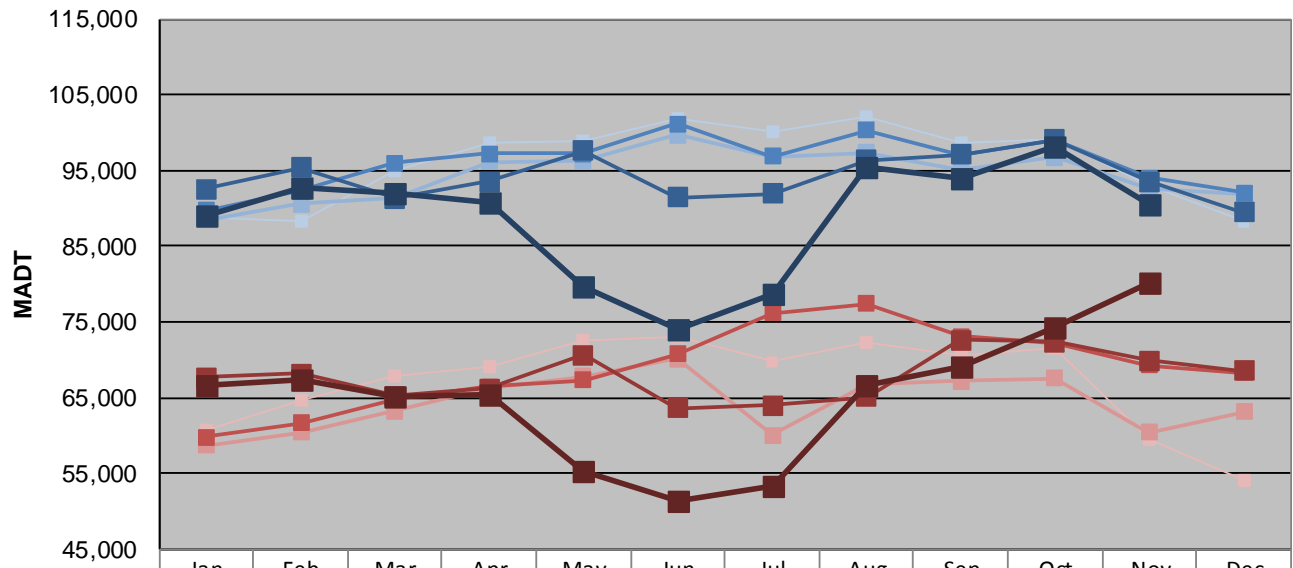
| | | |
|--|----------------------|-------------------------------------|
| Station Measurement: VOLUME | | |
| Route: TH 169 | Route Direction: N/S | Lanes: 4 |
| County: Hennepin | | Closest City: St Louis Park |
| Functional Class: Urban Principal Arterial - Other Freeways or Expressways | | |
| Location: N OF MSAS296 (CEDAR LAKE RD) IN ST LOUIS PARK | | |
| Ref Post: 128+00.870 | True Mile: 126.71 | Sequence No. 9883 |
| Volume: 2,611,735 | | MADT: 87,058 |
| Weekday (M-F) MADT: 90,472 | | Weekend (Sa-Su) MADT: 80,232 |



Note: Decrease in traffic June to August 2013 and May to July 2014 due to construction on TH 169



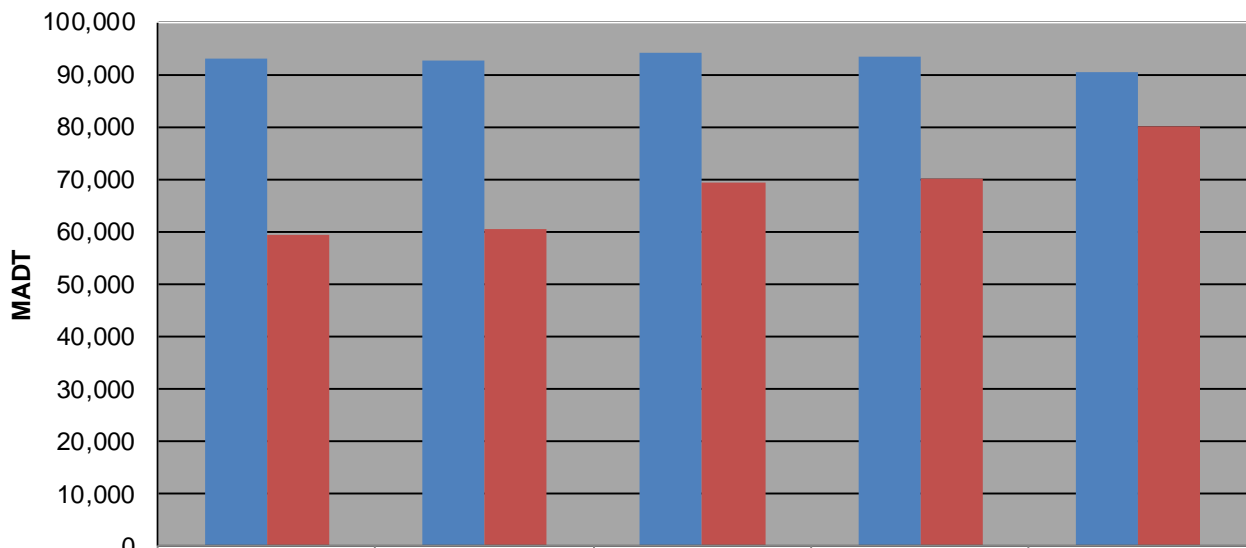
Weekday (WD)/Weekend (WE) Monthly Average Daily Traffic



| | Jan | Feb | Mar | Apr | May | Jun | Jul | Aug | Sep | Oct | Nov | Dec |
|--------|--------|--------|--------|--------|--------|---------|---------|---------|--------|--------|--------|--------|
| '10 WD | 88,826 | 88,294 | 94,950 | 98,576 | 98,896 | 101,952 | 100,224 | 102,170 | 98,712 | 99,056 | 93,080 | 88,214 |
| '10 WE | 60,814 | 64,666 | 67,972 | 68,972 | 72,542 | 72,962 | 69,770 | 72,390 | 70,472 | 71,496 | 59,474 | 54,118 |
| '11 WD | 88,434 | 90,560 | 91,470 | 96,166 | 96,254 | 99,718 | 96,888 | 97,362 | 95,130 | 96,786 | 92,618 | 91,922 |
| '11 WE | 58,664 | 60,376 | 63,262 | 66,348 | 67,768 | 70,182 | 60,090 | 66,796 | 67,230 | 67,548 | 60,464 | 63,144 |
| '12 WD | 89,714 | 92,288 | 95,978 | 97,246 | 97,256 | 101,148 | 96,822 | 100,274 | 97,030 | 99,116 | 94,060 | 92,002 |
| '12 WE | 59,788 | 61,630 | 64,860 | 66,394 | 67,284 | 70,722 | 76,130 | 77,458 | 73,144 | 72,218 | 69,248 | 68,238 |
| '13 WD | 92,596 | 95,332 | 91,314 | 93,474 | 97,552 | 91,436 | 91,964 | 96,318 | 97,086 | 99,082 | 93,484 | 89,416 |
| '13 WE | 67,682 | 68,204 | 65,260 | 66,224 | 70,580 | 63,622 | 63,984 | 65,062 | 72,598 | 72,330 | 69,892 | 68,544 |
| '14 WD | 89,146 | 92,618 | 92,010 | 90,872 | 79,712 | 74,122 | 78,754 | 95,444 | 93,860 | 98,234 | 90,472 | |
| '14 WE | 66,634 | 67,396 | 65,258 | 65,418 | 55,340 | 51,354 | 53,202 | 66,702 | 69,192 | 74,266 | 80,232 | |

Note: 'Weekday' defined as Monday-Friday, 'Weekend' defined as Saturday-Sunday

Weekday/Weekend Monthly Average Daily Traffic ('10-'14)



| | Nov-10 | Nov-11 | Nov-12 | Nov-13 | Nov-14 |
|---------|--------|--------|--------|--------|--------|
| Weekday | 93,080 | 92,618 | 94,060 | 93,484 | 90,472 |
| Weekend | 59,474 | 60,464 | 69,248 | 69,892 | 80,232 |