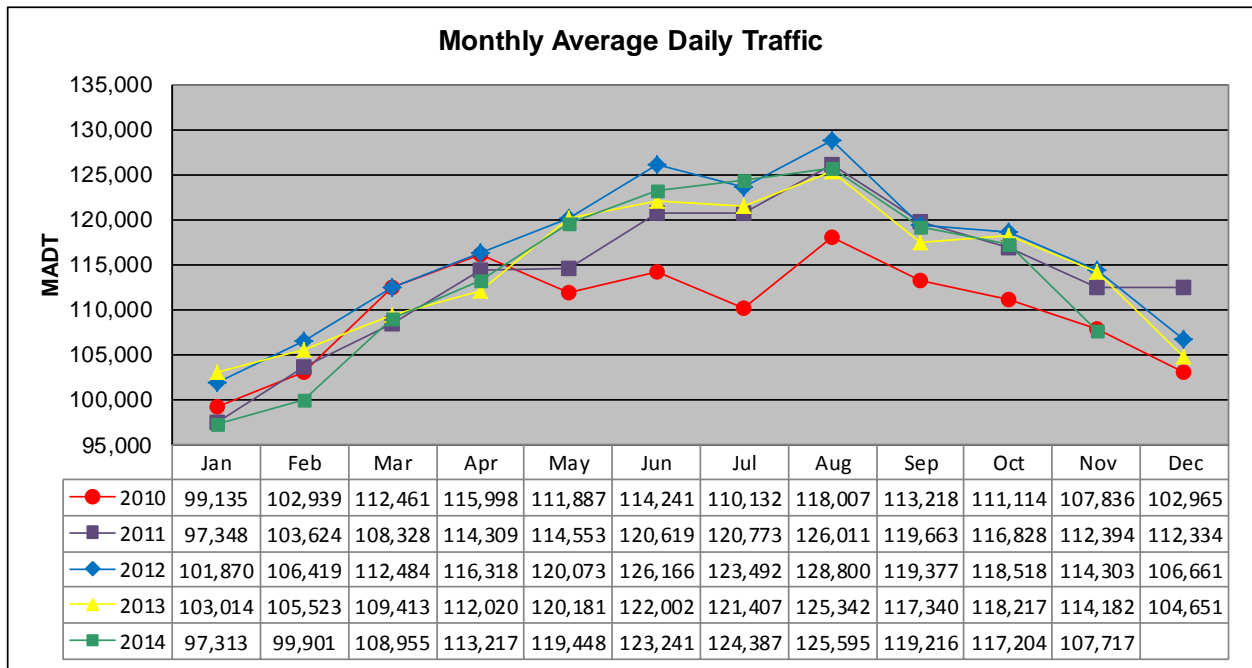


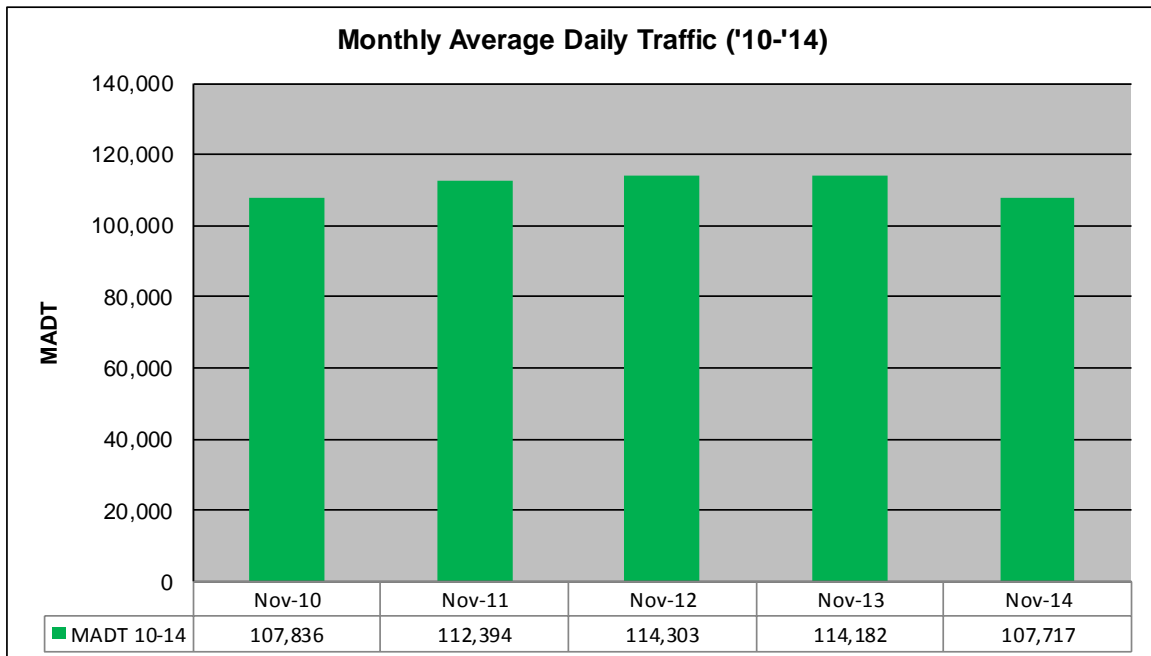
MONTHLY REPORT, STATION NO. 342 (ATR)

NOVEMBER 2014

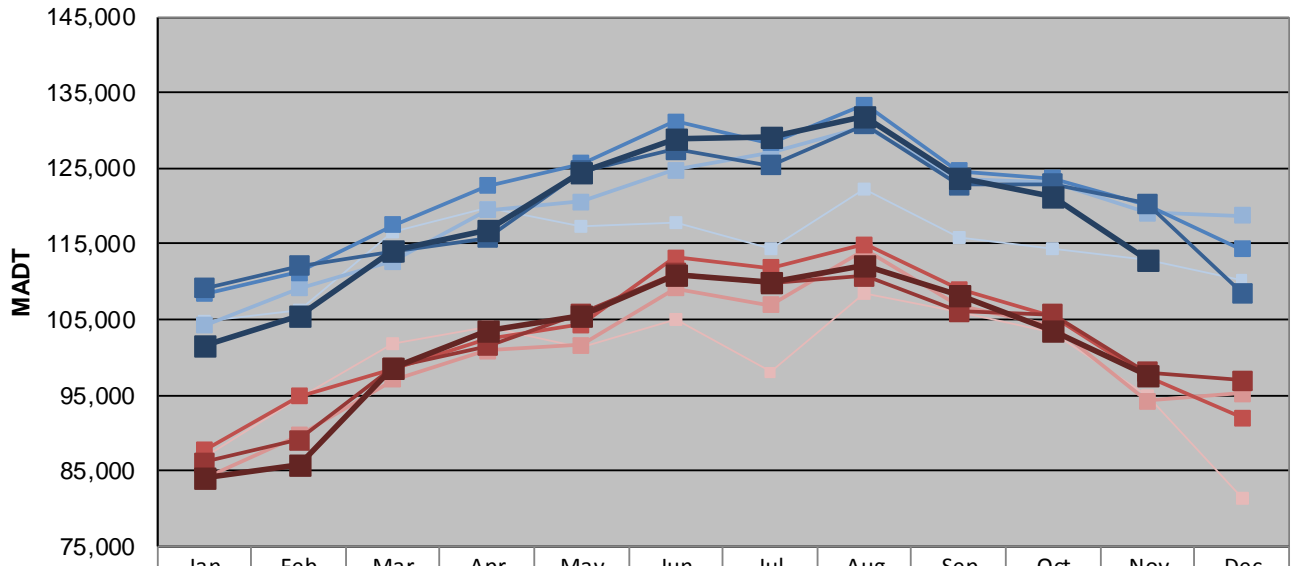
| | | |
|---|----------------------|-------------------------------------|
| Station Measurement: VOLUME | | |
| Route: I-94 | Route Direction: E/W | Lanes: 6 |
| County: Hennepin | | Closest City: Maple Grove |
| Functional Class: Urban Principal Arterial - Interstate | | |
| Location: S OF CR30 (93RD AVE N) IN MAPLE GROVE | | |
| Ref Post: 214+00.030 | True Mile: 214.71 | Sequence No. 9859 |
| Volume: 3,231,503 | | MADT: 107,717 |
| Weekday (M-F) MADT: 112,826 | | Weekend (Sa-Su) MADT: 97,498 |



Note: Decrease in traffic May to July 2010 due to construction on I-94



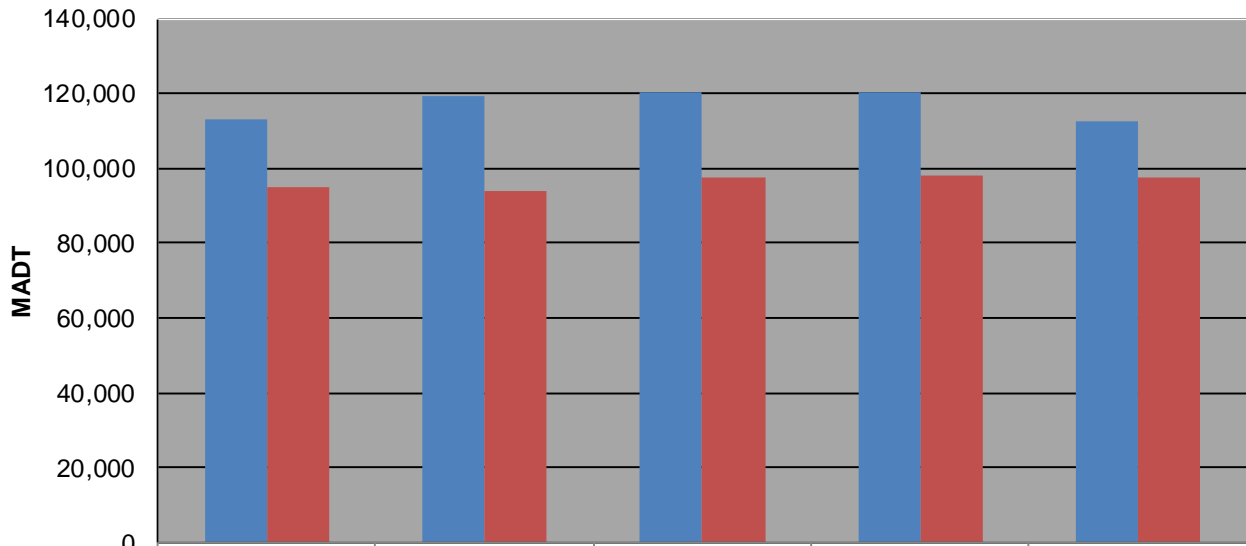
Weekday (WD)/Weekend (WE) Monthly Average Daily Traffic



| | Jan | Feb | Mar | Apr | May | Jun | Jul | Aug | Sep | Oct | Nov | Dec |
|--------|---------|---------|---------|---------|---------|---------|---------|---------|---------|---------|---------|---------|
| '10 WD | 104,824 | 106,298 | 116,672 | 119,892 | 117,240 | 117,770 | 114,268 | 122,356 | 115,848 | 114,450 | 112,890 | 110,170 |
| '10 WE | 86,840 | 94,544 | 101,794 | 103,954 | 101,372 | 105,056 | 98,012 | 108,556 | 105,914 | 103,240 | 94,902 | 81,256 |
| '11 WD | 104,160 | 109,174 | 112,636 | 119,406 | 120,536 | 124,712 | 127,024 | 130,598 | 123,560 | 123,216 | 119,120 | 118,692 |
| '11 WE | 83,982 | 89,722 | 97,034 | 100,868 | 101,646 | 109,132 | 106,946 | 114,196 | 106,888 | 104,168 | 94,212 | 95,158 |
| '12 WD | 108,440 | 111,240 | 117,462 | 122,720 | 125,622 | 131,224 | 128,310 | 133,324 | 124,590 | 123,670 | 120,196 | 114,256 |
| '12 WE | 87,712 | 94,874 | 98,452 | 102,420 | 104,280 | 113,170 | 111,858 | 114,874 | 108,952 | 105,288 | 97,450 | 91,962 |
| '13 WD | 109,168 | 112,104 | 113,898 | 115,804 | 124,614 | 127,486 | 125,320 | 130,734 | 122,742 | 122,918 | 120,356 | 108,512 |
| '13 WE | 86,042 | 89,068 | 98,666 | 101,520 | 105,852 | 111,034 | 109,834 | 110,696 | 106,020 | 105,628 | 97,988 | 96,882 |
| '14 WD | 101,440 | 105,510 | 114,144 | 116,940 | 124,348 | 128,946 | 129,138 | 131,802 | 123,736 | 121,328 | 112,826 | |
| '14 WE | 83,944 | 85,880 | 98,646 | 103,590 | 105,546 | 110,892 | 109,986 | 112,100 | 108,132 | 103,542 | 97,498 | |

Note: 'Weekday' defined as Monday-Friday, 'Weekend' defined as Saturday-Sunday

Weekday/Weekend Monthly Average Daily Traffic ('10-'14)



| | Nov-10 | Nov-11 | Nov-12 | Nov-13 | Nov-14 |
|---------|---------|---------|---------|---------|---------|
| Weekday | 112,890 | 119,120 | 120,196 | 120,356 | 112,826 |
| Weekend | 94,902 | 94,212 | 97,450 | 97,988 | 97,498 |