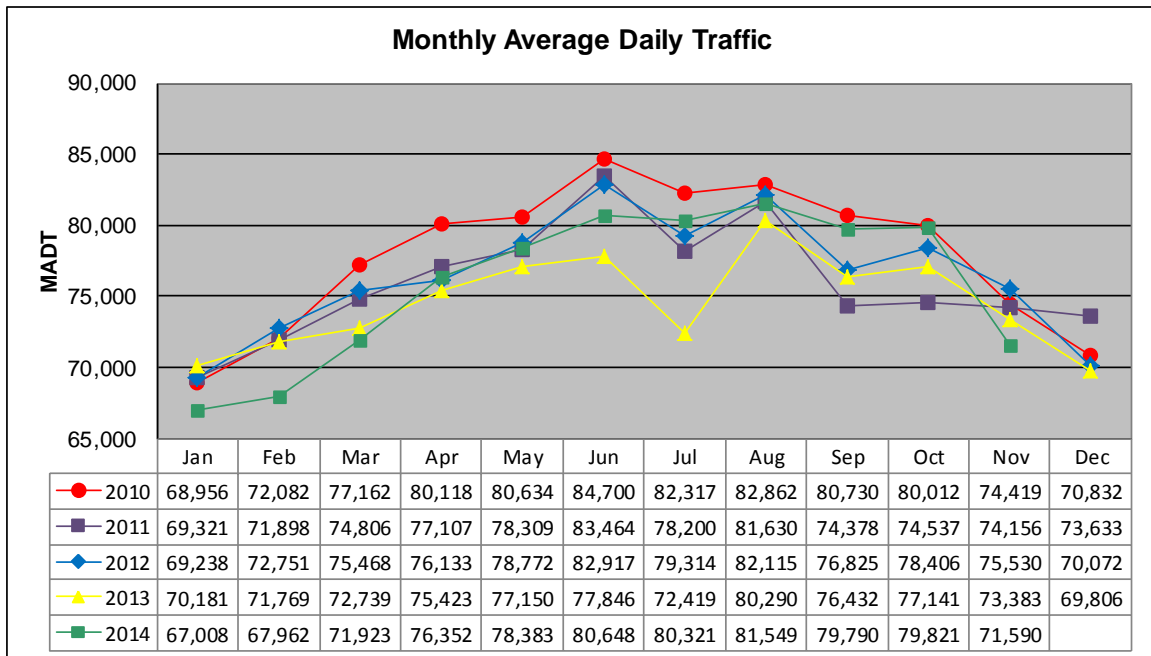


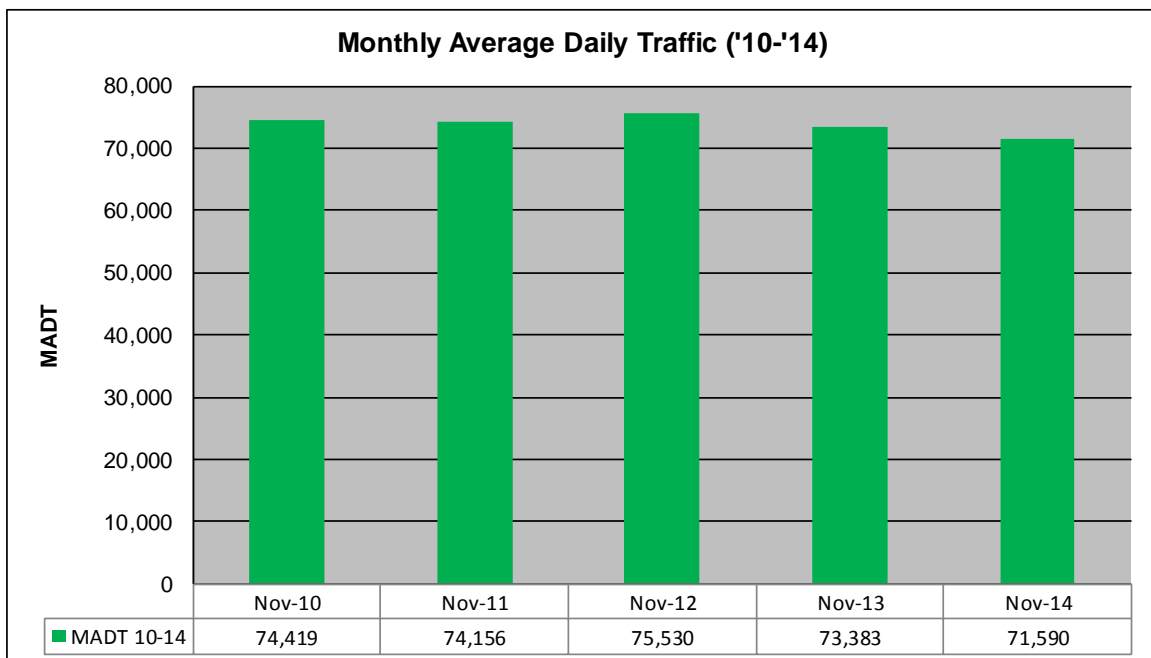
# MONTHLY REPORT, STATION NO. 336 (ATR)

## NOVEMBER 2014

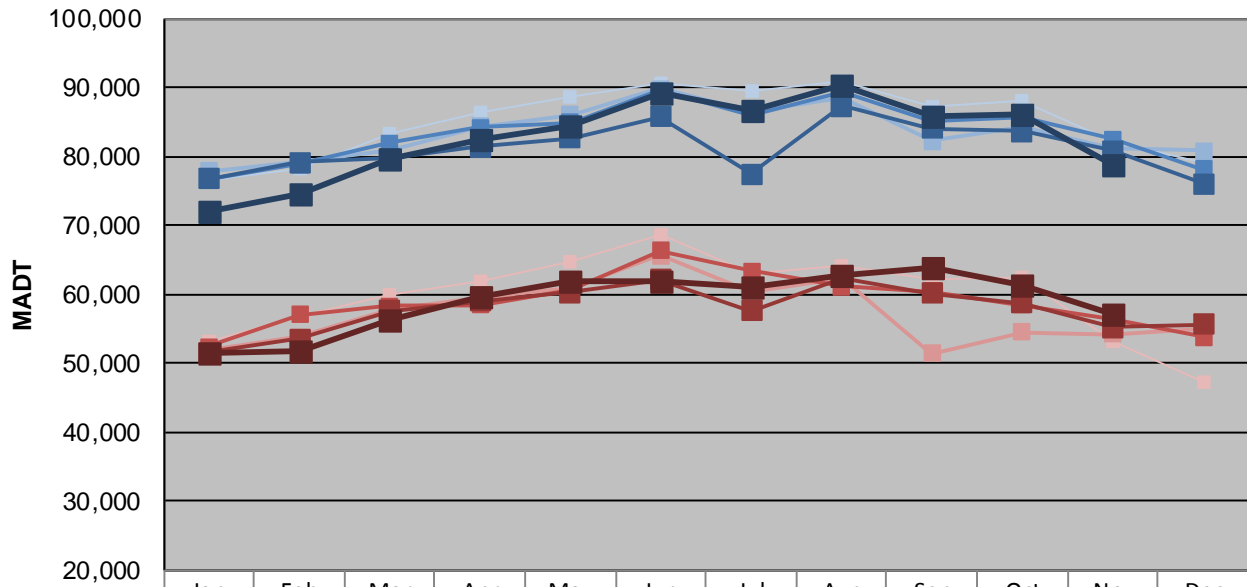
Station Measurement: VOLUME		
Route: I-35E	Route Direction: N/S	Lanes: 6
County: Dakota		Closest City: Eagan
Functional Class: Urban Principal Arterial - Interstate		
Location: N OF MSAS102 (DEERWOOD DR) IN EAGAN		
Ref Post: 095+00.422	True Mile: 95.48	Sequence No. 9854
<b>Volume: 2,147,696</b>		<b>MADT: 71,590</b>
<b>Weekday (M-F) MADT: 78,768</b>		<b>Weekend (Sa-Su) MADT: 57,234</b>



Note: Decrease in traffic September/October 2011 and June/July 2013 due to construction on I-35E



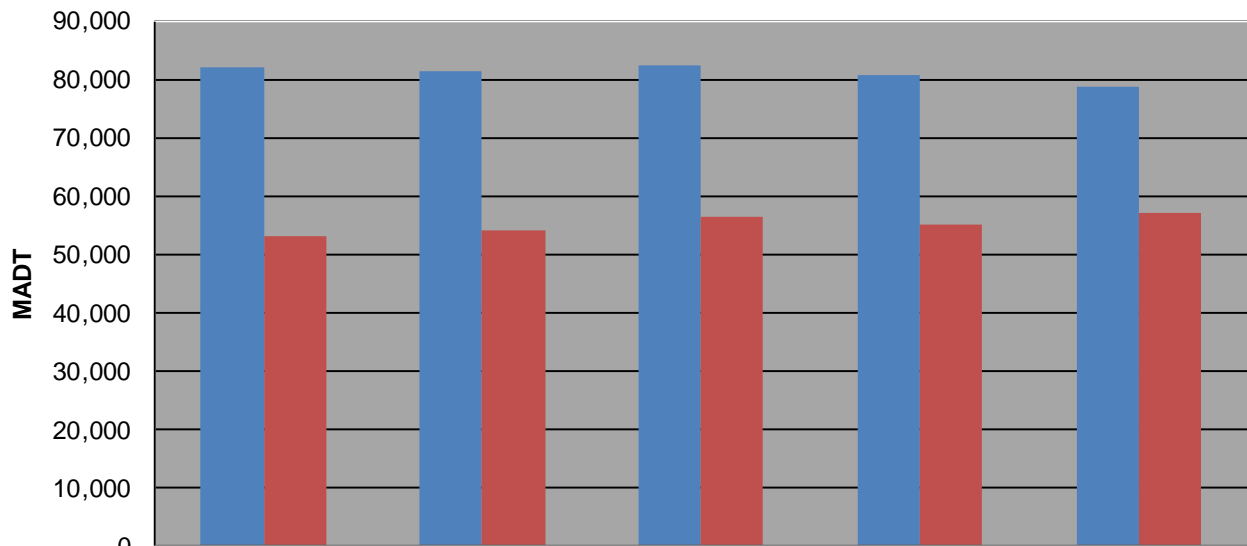
### Weekday (WD)/Weekend (WE) Monthly Average Daily Traffic



	Jan	Feb	Mar	Apr	May	Jun	Jul	Aug	Sep	Oct	Nov	Dec
'10 WD	76,582	78,184	83,380	86,484	88,648	90,646	89,590	90,958	87,224	88,100	82,198	78,912
'10 WE	53,108	56,824	60,028	61,898	64,712	68,518	63,024	64,012	62,234	62,490	53,038	47,174
'11 WD	77,886	79,152	80,856	84,294	86,058	89,872	86,444	88,576	82,262	84,256	81,216	80,754
'11 WE	51,990	53,732	57,664	59,352	60,968	65,600	60,442	62,174	51,464	54,516	54,158	54,978
'12 WD	76,764	78,812	81,904	84,140	84,920	89,596	85,984	89,204	85,056	85,552	82,520	78,184
'12 WE	52,444	57,056	58,334	58,418	60,606	66,374	63,320	61,112	60,364	58,478	56,528	53,726
'13 WD	76,776	79,098	79,624	81,418	82,600	85,692	77,412	87,246	84,058	83,556	80,846	76,074
'13 WE	51,538	53,446	57,634	58,958	60,290	62,154	57,608	62,412	60,166	58,710	55,146	55,652
'14 WD	72,026	74,480	79,634	82,506	84,428	89,130	86,714	90,340	85,944	86,024	78,768	
'14 WE	51,572	51,670	56,130	59,578	61,984	61,874	61,030	62,772	63,922	61,356	57,234	

Note: 'Weekday' defined as Monday-Friday, 'Weekend' defined as Saturday-Sunday

### Weekday/Weekend Monthly Average Daily Traffic ('10-'14)



	Nov-10	Nov-11	Nov-12	Nov-13	Nov-14
Weekday	82,198	81,216	82,520	80,846	78,768
Weekend	53,038	54,158	56,528	55,146	57,234