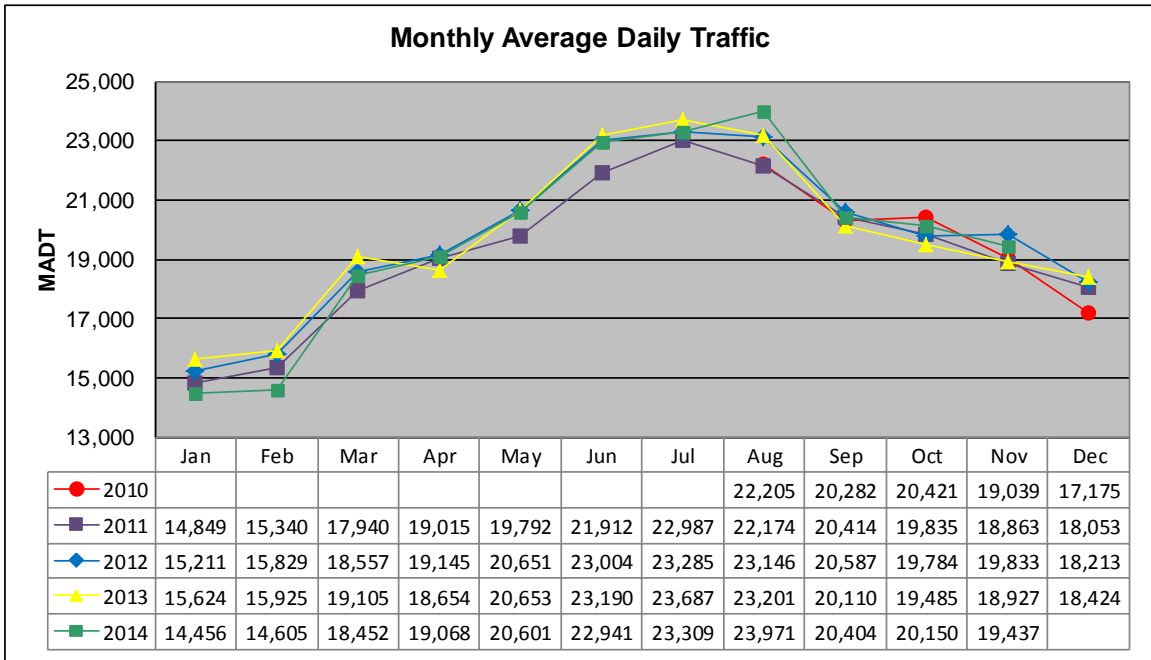


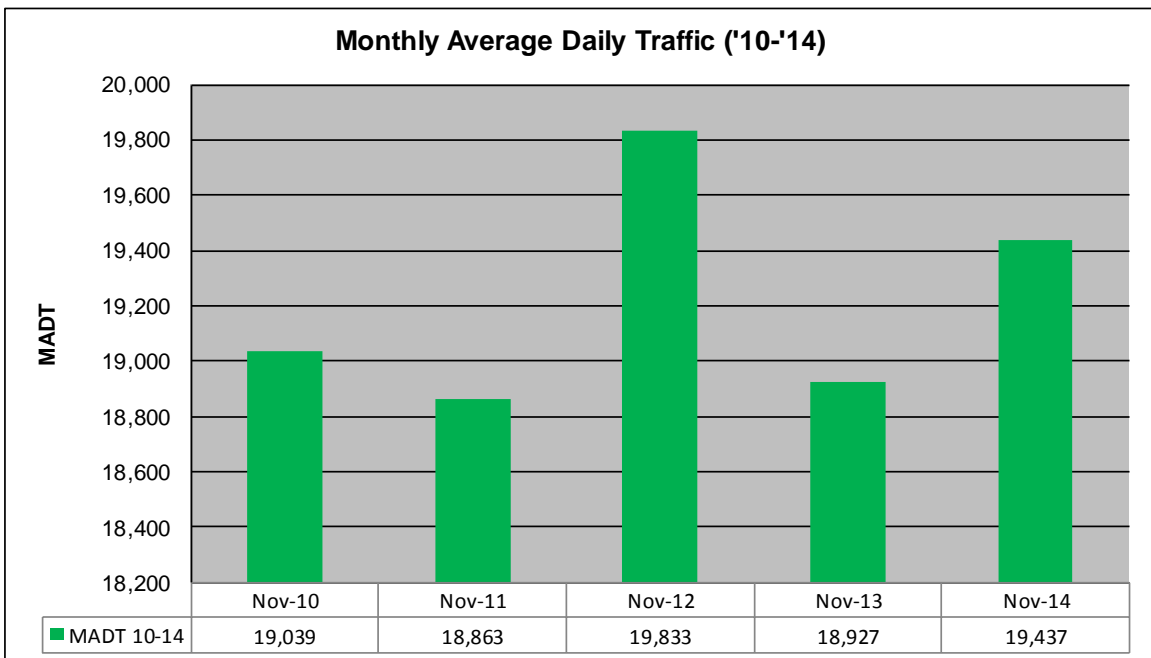
MONTHLY REPORT, STATION NO. 26 (WIM)

NOVEMBER 2014

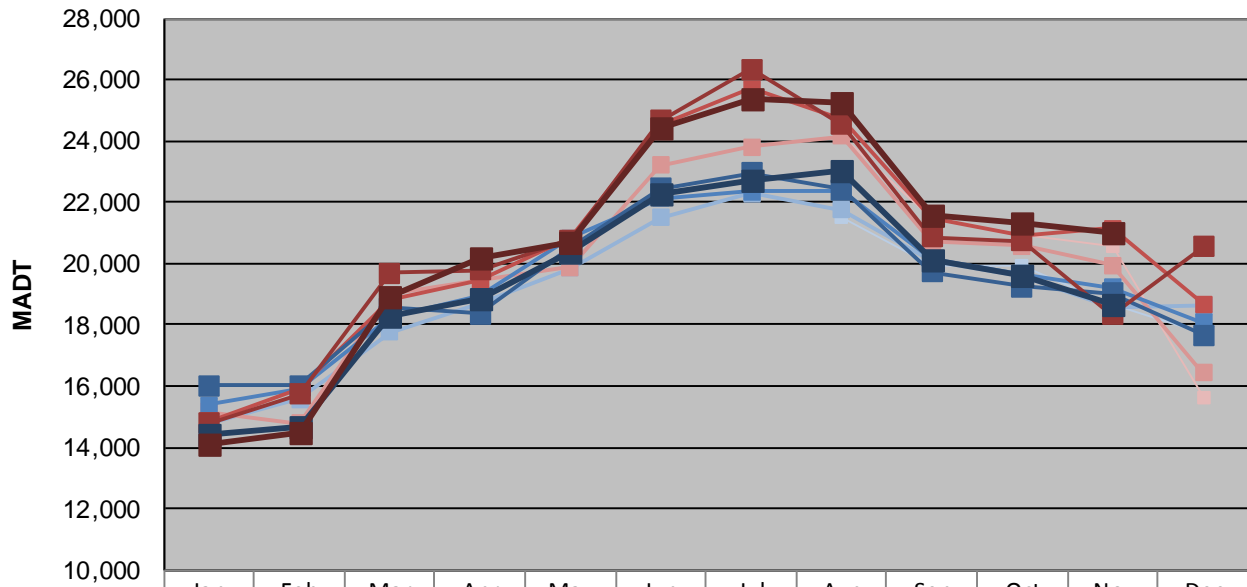
| | | |
|---|-------------------------|-------------------------------------|
| Station Measurement: VOLUME/SPEED/CLASS/WEIGHT | | |
| Route: I-35 | Route Direction: N/S | Lanes: 4 |
| County: Steele | Closest City: Ellendale | |
| Functional Class: Rural Principal Arterial - Interstate | | |
| Location: 3.5 MI N OF TH30, N OF ELLENDALE | | |
| Ref Post: 030+00.100 | True Mile: 30.103 | Sequence No. 5707 |
| Volume: 583,108 | | MADT: 19,437 |
| Weekday (M-F) MADT: 18,642 | | Weekend (Sa-Su) MADT: 21,026 |



Note: No data until August 2010; sensors destroyed by construction in May 2009



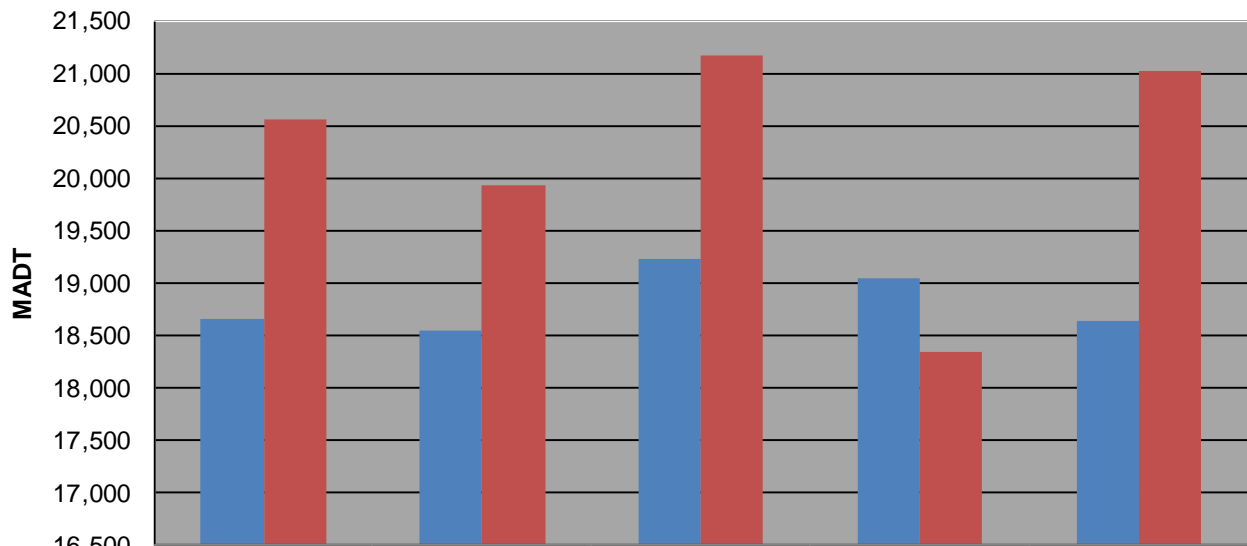
Weekday (WD)/Weekend (WE) Monthly Average Daily Traffic



| | Jan | Feb | Mar | Apr | May | Jun | Jul | Aug | Sep | Oct | Nov | Dec |
|--------|--------|--------|--------|--------|--------|--------|--------|--------|--------|--------|--------|--------|
| '10 WD | | | | | | | | 21,494 | 19,914 | 19,918 | 18,658 | 17,692 |
| '10 WE | | | | | | | | 24,154 | 21,478 | 20,926 | 20,564 | 15,598 |
| '11 WD | 14,784 | 15,568 | 17,746 | 18,698 | 19,852 | 21,500 | 22,302 | 21,742 | 20,060 | 19,570 | 18,538 | 18,624 |
| '11 WE | 15,158 | 14,772 | 18,986 | 19,460 | 19,898 | 23,210 | 23,810 | 24,150 | 20,694 | 20,576 | 19,936 | 16,418 |
| '12 WD | 15,374 | 15,880 | 18,258 | 18,960 | 20,840 | 22,122 | 22,366 | 22,386 | 20,138 | 19,666 | 19,232 | 18,090 |
| '12 WE | 14,854 | 15,898 | 18,820 | 19,430 | 20,836 | 24,530 | 25,698 | 24,716 | 21,486 | 20,934 | 21,164 | 18,670 |
| '13 WD | 16,032 | 16,006 | 18,544 | 18,352 | 20,506 | 22,456 | 22,958 | 22,426 | 19,714 | 19,238 | 19,038 | 17,658 |
| '13 WE | 14,772 | 15,724 | 19,688 | 19,776 | 20,766 | 24,662 | 26,332 | 24,532 | 20,866 | 20,728 | 18,334 | 20,560 |
| '14 WD | 14,448 | 14,648 | 18,298 | 18,856 | 20,390 | 22,296 | 22,692 | 23,042 | 20,094 | 19,582 | 18,642 | |
| '14 WE | 14,074 | 14,500 | 18,940 | 20,210 | 20,660 | 24,446 | 25,398 | 25,264 | 21,574 | 21,334 | 21,026 | |

Note: 'Weekday' defined as Monday-Friday, 'Weekend' defined as Saturday-Sunday

Weekday/Weekend Monthly Average Daily Traffic ('10-'14)



| | Nov-10 | Nov-11 | Nov-12 | Nov-13 | Nov-14 |
|---------|--------|--------|--------|--------|--------|
| Weekday | 18,658 | 18,538 | 19,232 | 19,038 | 18,642 |
| Weekend | 20,564 | 19,936 | 21,164 | 18,334 | 21,026 |