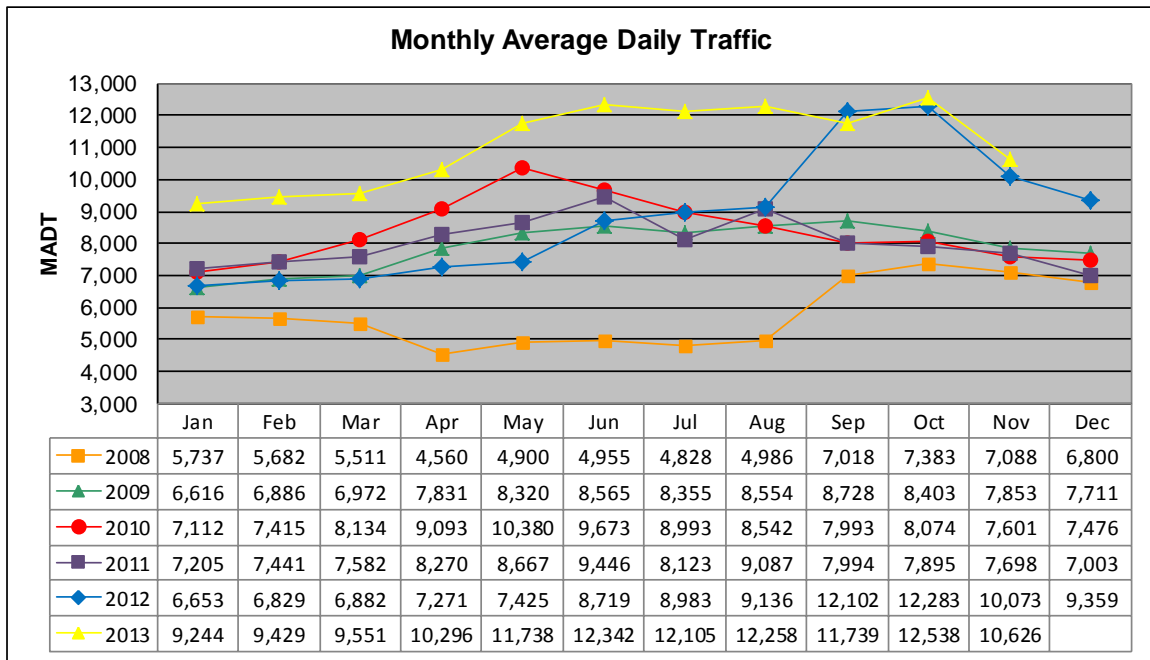


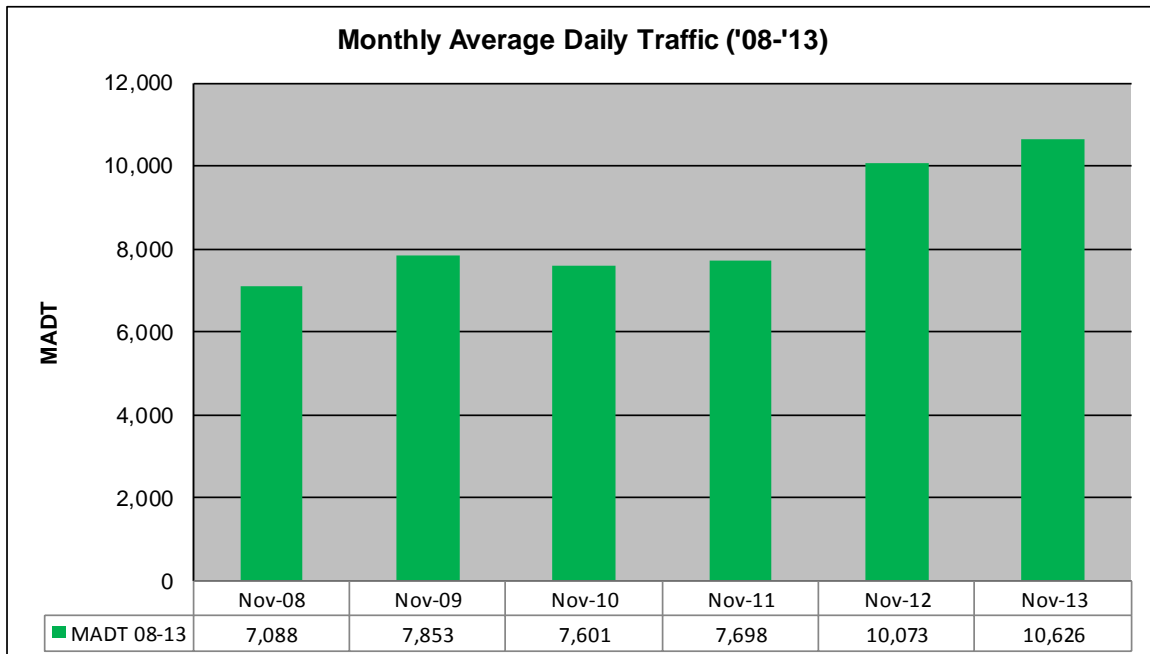
MONTHLY REPORT, STATION NO. 422 (ATR)

NOVEMBER 2013

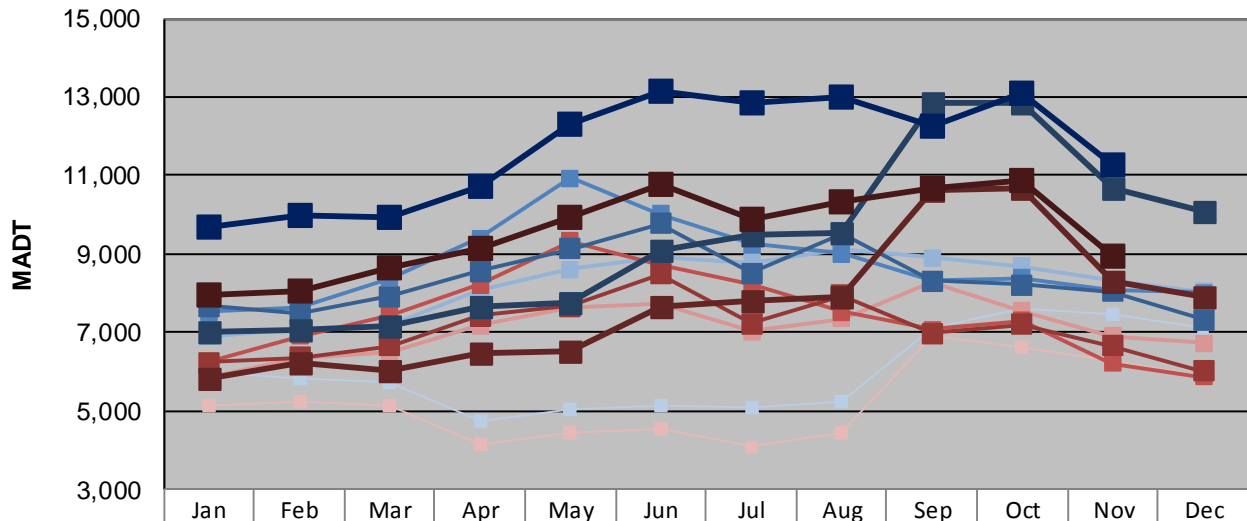
Station Measurement: VOLUME/SPEED/CLASS		
Route: CSAH 14	Route Direction: E/W	Lanes: 2
County: Anoka	Closest City: Blaine	
Functional Class: Urban Other Principal Arterial		
Location: .7 MI W OF CSAH17 (LEXINGTON AVE NE) IN BLAINE		
Ref Post: 010+00.100	True Mile: 10.1	Sequence No. 9893
Volume: 318,793		MADT: 10,626
Weekday (M-F) MADT: 11,294		Weekend (Sa-Su) MADT: 8,954



Note: Decrease in traffic January to September 2008 due to construction on TH 65 & CSAH 14 and April/May 2012 due to construction on a new turn lane... Increase in traffic beginning September 2012 due to the new lane



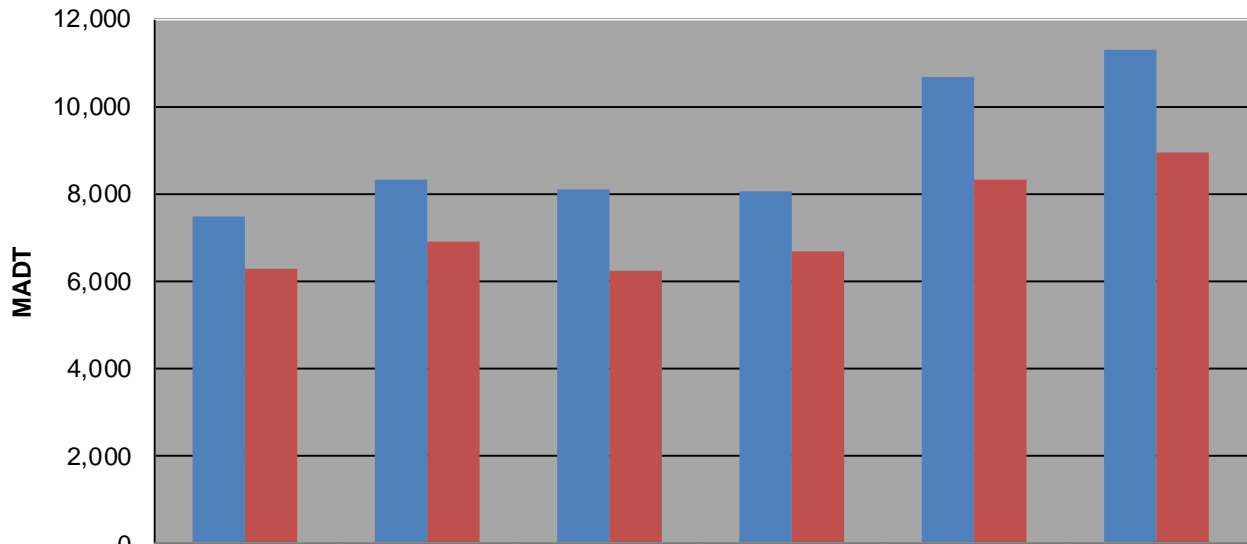
Weekday (WD)/Weekend (WE) Monthly Average Daily Traffic



	Jan	Feb	Mar	Apr	May	Jun	Jul	Aug	Sep	Oct	Nov	Dec
'08 WD	5,960	5,834	5,712	4,720	5,052	5,132	5,078	5,230	7,106	7,630	7,486	7,124
'08 WE	5,144	5,232	5,136	4,138	4,450	4,568	4,086	4,436	6,916	6,620	6,292	5,866
'09 WD	6,896	7,098	7,204	8,078	8,608	8,912	8,796	9,142	8,906	8,694	8,310	8,046
'09 WE	5,858	6,358	6,514	7,182	7,646	7,714	7,038	7,354	8,268	7,554	6,904	6,730
'10 WD	7,532	7,622	8,400	9,392	10,926	10,018	9,244	9,000	8,308	8,394	8,098	8,010
'10 WE	6,228	6,902	7,450	8,212	9,326	8,720	8,220	7,516	7,092	7,306	6,220	5,862
'11 WD	7,670	7,474	7,910	8,566	9,128	9,778	8,522	9,520	8,308	8,226	8,046	7,338
'11 WE	6,234	6,366	6,656	7,434	7,678	8,478	7,216	7,940	6,986	7,192	6,658	6,014
'12 WD	7,042	7,072	7,174	7,672	7,744	9,114	9,508	9,542	12,828	12,862	10,690	10,082
'12 WE	5,810	6,234	6,040	6,454	6,536	7,668	7,790	7,900	10,648	10,686	8,320	7,908
'13 WD	9,708	9,970	9,940	10,716	12,308	13,132	12,832	12,986	12,260	13,110	11,294	
'13 WE	7,966	8,080	8,666	9,166	9,950	10,762	9,880	10,352	10,678	10,892	8,954	

Note: 'Weekday' defined as Monday-Friday, 'Weekend' defined as Saturday-Sunday

Weekday/Weekend Monthly Average Daily Traffic ('08-'13)



	Nov-08	Nov-09	Nov-10	Nov-11	Nov-12	Nov-13
Weekday	7,486	8,310	8,098	8,046	10,690	11,294
Weekend	6,292	6,904	6,220	6,658	8,320	8,954