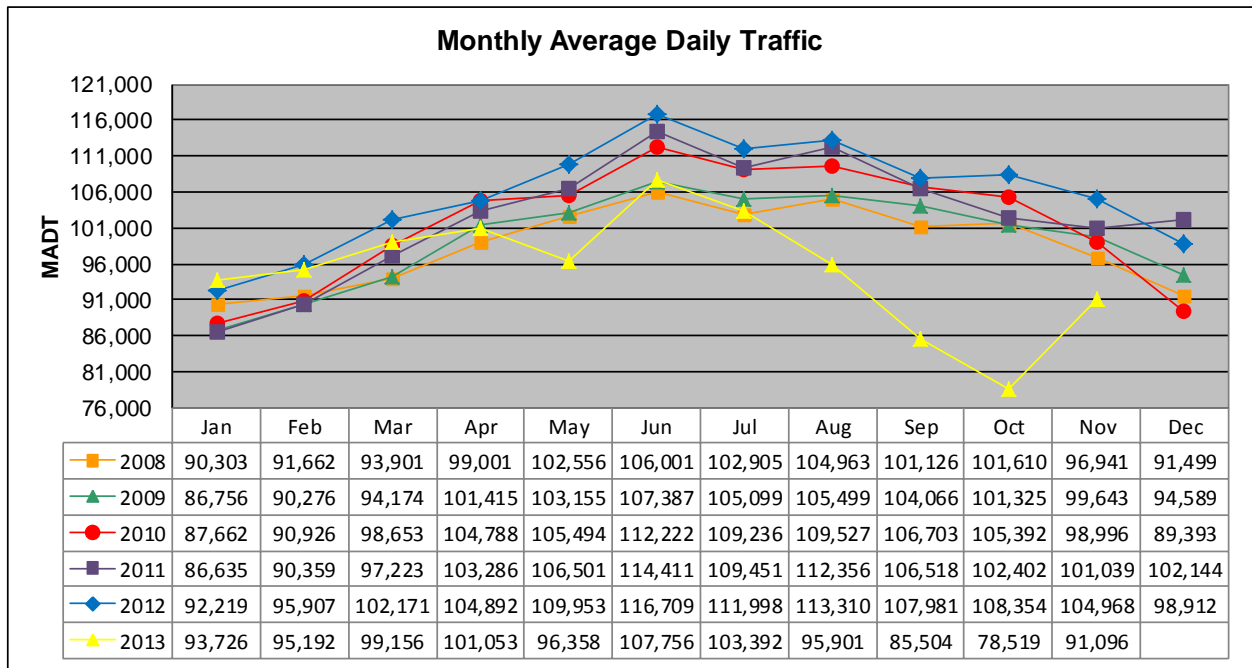


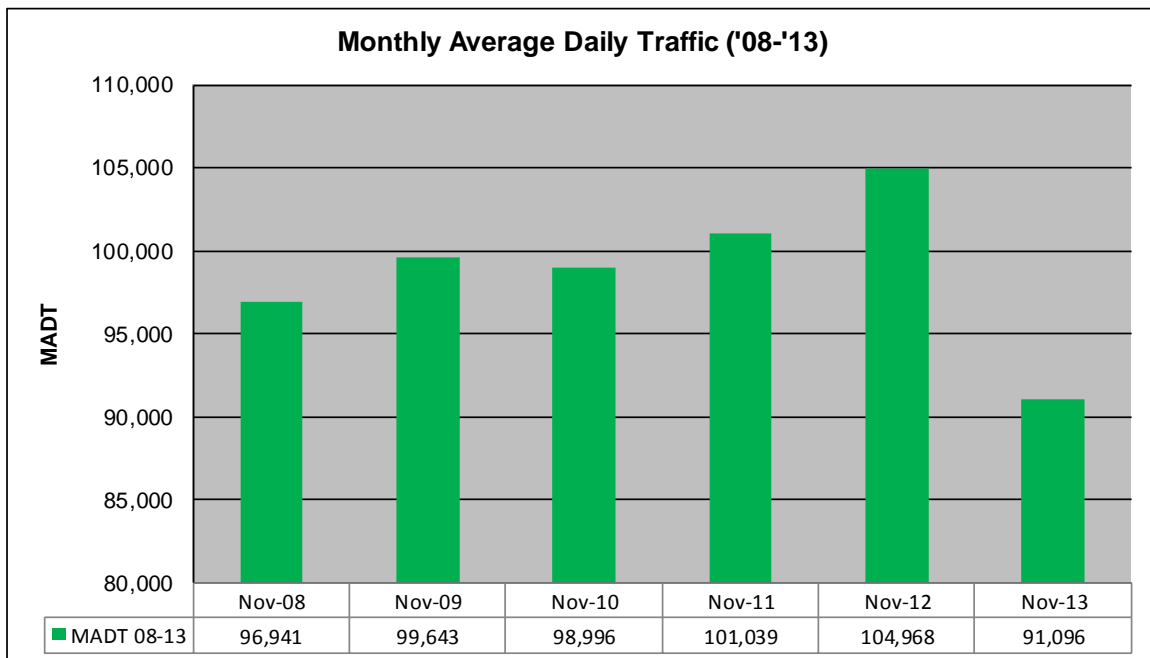
MONTHLY REPORT, STATION NO. 305 (ATR)

NOVEMBER 2013

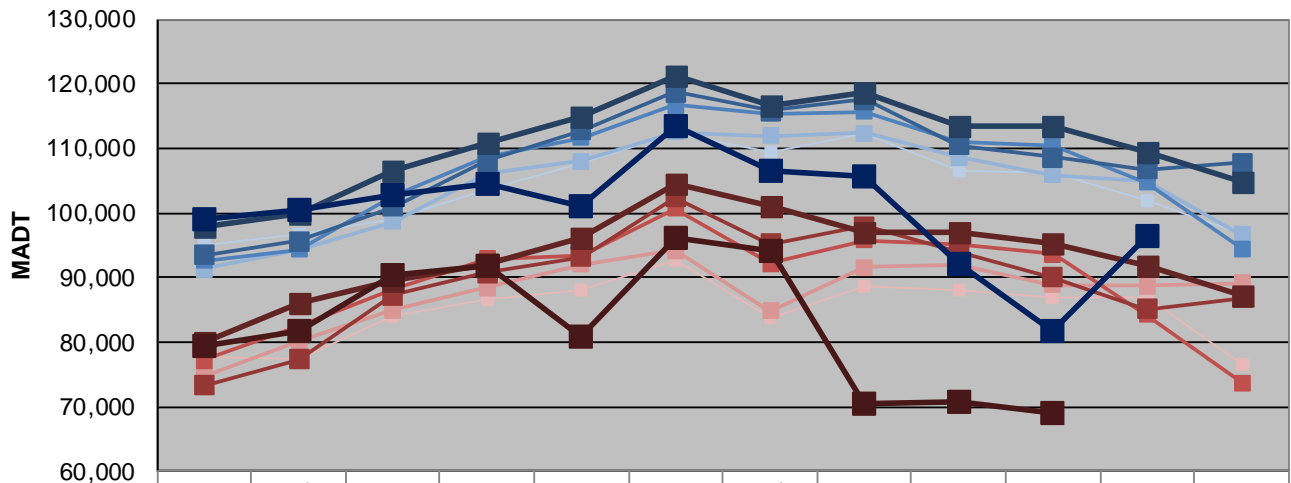
| | | |
|--|----------------------|-------------------------------------|
| Station Measurement: VOLUME | | |
| Route: I-35 | Route Direction: N/S | Lanes: 6 |
| County: Dakota | | Closest City: Burnsville |
| Functional Class: Urban Principal Arterial - Interstate | | |
| Location: S OF MSAS101 (CRYSTAL LAKE RD W) IN BURNSVILLE | | |
| Ref Post: 087+00.070 | True Mile: 87.071 | Sequence No. 6786 |
| Volume: 2,732,891 | | MADT: 91,096 |
| Weekday (M-F) MADT: 96,420 | | Weekend (Sa-Su) MADT: 77,560 |



Note: Decrease in traffic May and August to November 2013 due to construction on I-35



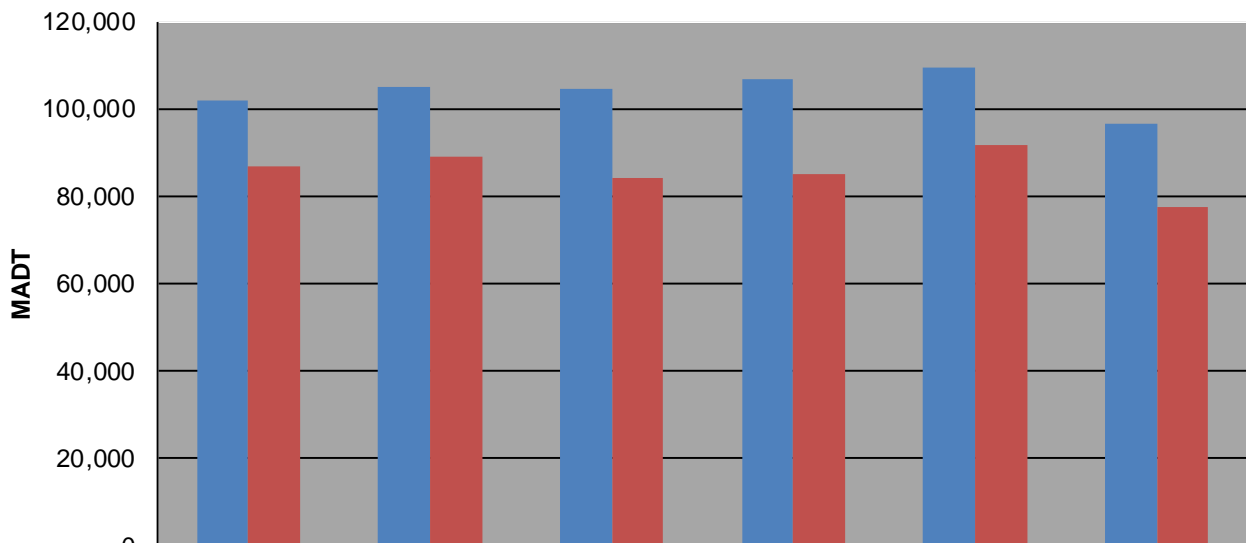
Weekday (WD)/Weekend (WE) Monthly Average Daily Traffic



| | Jan | Feb | Mar | Apr | May | Jun | Jul | Aug | Sep | Oct | Nov | Dec |
|--------|--------|---------|---------|---------|---------|---------|---------|---------|---------|---------|---------|---------|
| '08 WD | 94,934 | 96,572 | 98,948 | 103,588 | 107,740 | 112,156 | 109,280 | 112,416 | 106,402 | 106,268 | 102,016 | 96,846 |
| '08 WE | 77,642 | 77,494 | 84,016 | 86,688 | 88,066 | 92,608 | 83,768 | 88,622 | 88,076 | 86,888 | 86,790 | 76,618 |
| '09 WD | 91,242 | 94,326 | 98,682 | 106,182 | 108,026 | 112,522 | 111,880 | 112,294 | 108,672 | 105,796 | 104,912 | 96,598 |
| '09 WE | 74,622 | 80,150 | 85,012 | 88,382 | 91,982 | 94,228 | 84,758 | 91,630 | 91,934 | 88,816 | 88,774 | 89,104 |
| '10 WD | 92,534 | 94,348 | 102,762 | 108,666 | 111,702 | 116,642 | 115,386 | 115,702 | 110,844 | 110,462 | 104,720 | 94,494 |
| '10 WE | 77,132 | 82,372 | 88,102 | 92,818 | 93,458 | 100,666 | 92,092 | 95,742 | 95,186 | 93,590 | 84,208 | 73,664 |
| '11 WD | 93,408 | 95,590 | 100,988 | 108,070 | 112,728 | 118,724 | 115,826 | 117,566 | 110,418 | 108,550 | 106,794 | 107,740 |
| '11 WE | 73,206 | 77,256 | 87,314 | 90,664 | 93,156 | 102,436 | 95,216 | 97,874 | 93,868 | 90,038 | 85,042 | 86,796 |
| '12 WD | 97,988 | 99,894 | 106,554 | 110,782 | 114,830 | 121,282 | 116,682 | 118,538 | 113,474 | 113,400 | 109,540 | 104,852 |
| '12 WE | 79,844 | 85,936 | 89,506 | 92,208 | 96,068 | 104,510 | 101,008 | 97,022 | 96,996 | 95,296 | 91,766 | 87,292 |
| '13 WD | 98,932 | 100,570 | 102,750 | 104,472 | 101,158 | 113,510 | 106,570 | 105,680 | 92,132 | 81,766 | 96,420 | |
| '13 WE | 79,354 | 81,746 | 90,282 | 91,828 | 80,794 | 96,250 | 94,072 | 70,360 | 70,708 | 68,998 | | |

Note: 'Weekday' defined as Monday-Friday, 'Weekend' defined as Saturday-Sunday

Weekday/Weekend Monthly Average Daily Traffic ('08-'13)



| | Nov-08 | Nov-09 | Nov-10 | Nov-11 | Nov-12 | Nov-13 |
|---------|---------|---------|---------|---------|---------|--------|
| Weekday | 102,016 | 104,912 | 104,720 | 106,794 | 109,540 | 96,420 |
| Weekend | 86,790 | 88,774 | 84,208 | 85,042 | 91,766 | 77,560 |