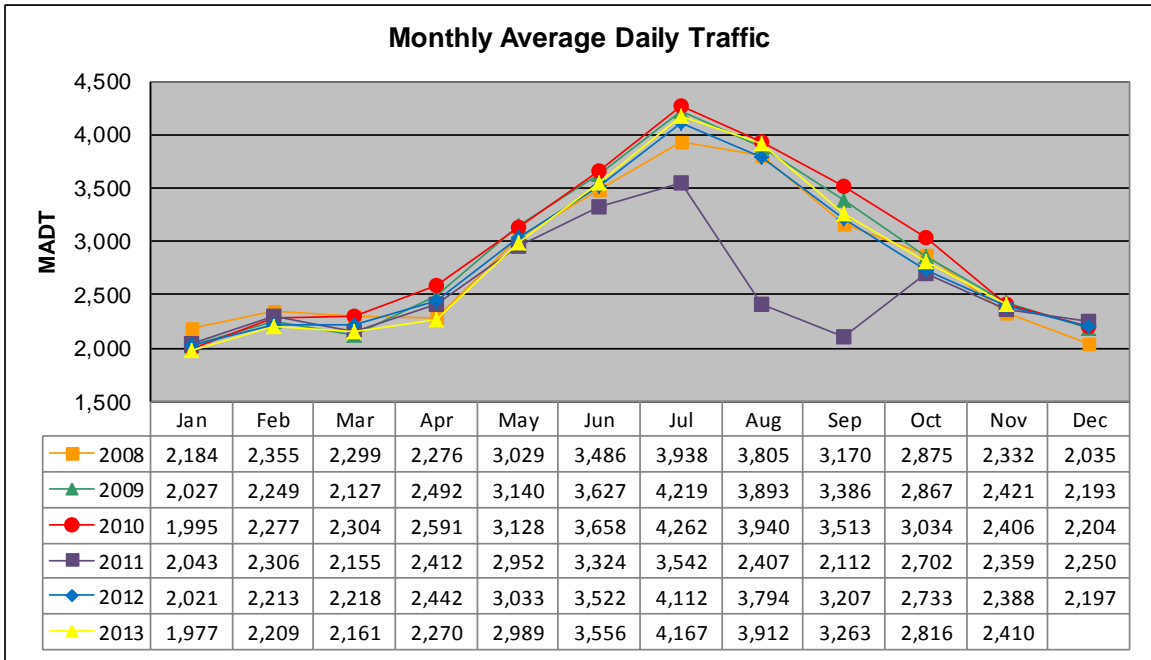


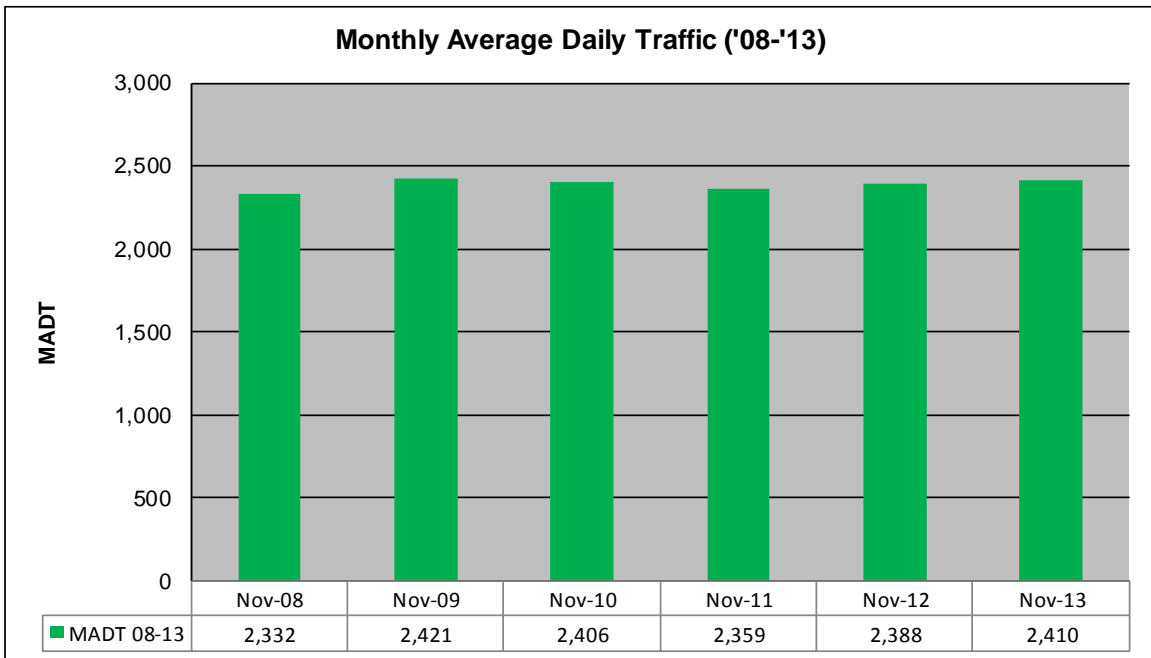
MONTHLY REPORT, STATION NO. 221 (ATR)

NOVEMBER 2013

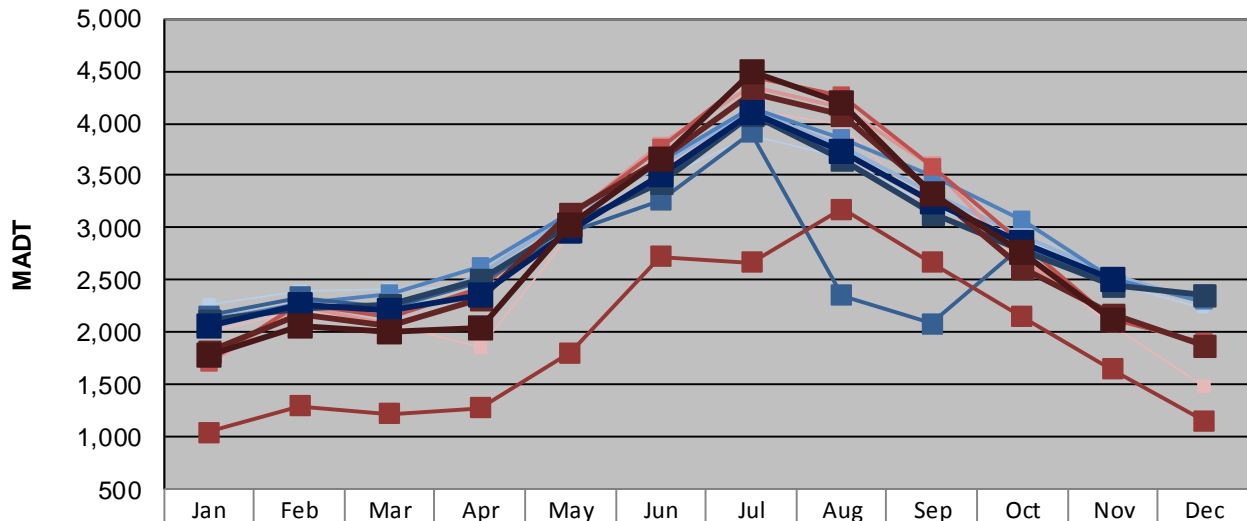
Station Measurement: VOLUME/SPEED/CLASS		
Route: TH 34	Route Direction: N/S	Lanes: 2
County: Hubbard	Closest City: Nevis	
Functional Class: Rural Principal Arterial - Other		
Location: 1.5 NE OF CSAH2 (BUNYAN TRAILS RD), NE OF NEVIS		
Ref Post: 087+00.730	True Mile: 88.713	Sequence No. 6728
Volume: 72,301		MADT: 2,410
Weekday (M-F) MADT: 2,516		Weekend (Sa-Su) MADT: 2,112



Note: Decrease in traffic July to September 2011 due to construction on TH 34



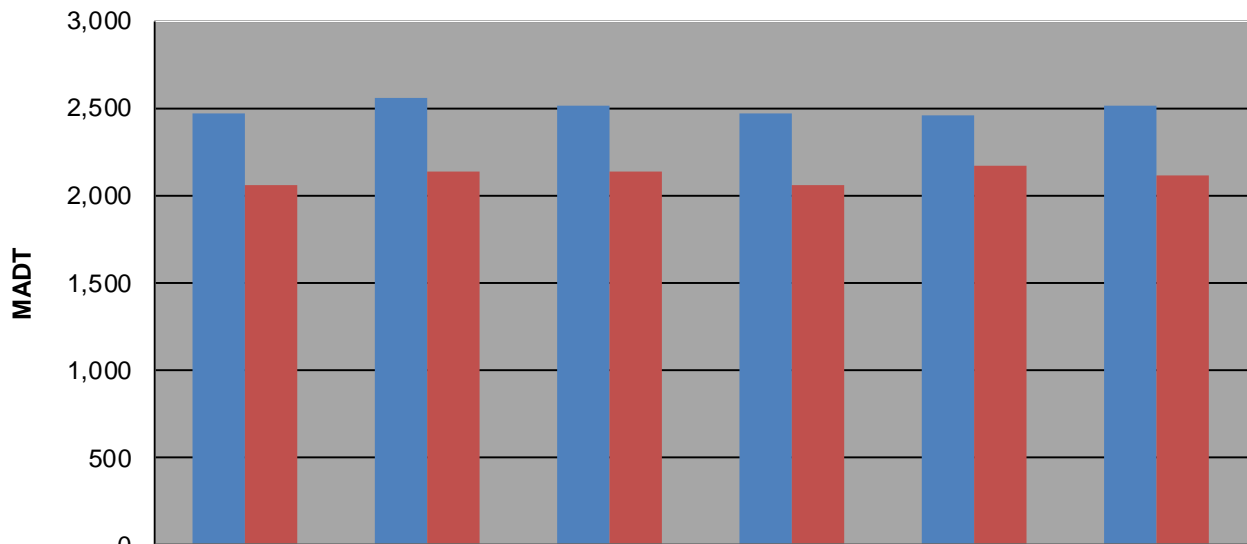
Weekday (WD)/Weekend (WE) Monthly Average Daily Traffic



	Jan	Feb	Mar	Apr	May	Jun	Jul	Aug	Sep	Oct	Nov	Dec
'08 WD	2,264	2,390	2,410	2,430	3,036	3,480	3,878	3,682	3,198	2,908	2,470	2,236
'08 WE	2,002	2,206	2,072	1,858	2,936	3,538	4,128	3,988	3,142	2,726	2,056	1,488
'09 WD	2,142	2,242	2,174	2,560	3,122	3,592	4,134	3,784	3,338	2,920	2,552	2,298
'09 WE	1,708	2,264	2,080	2,328	3,116	3,794	4,346	4,156	3,600	2,690	2,136	1,898
'10 WD	2,114	2,280	2,376	2,630	3,144	3,638	4,142	3,856	3,500	3,074	2,512	2,298
'10 WE	1,718	2,270	2,144	2,424	3,106	3,764	4,436	4,264	3,588	2,856	2,130	1,906
'11 WD	2,160	2,334	2,244	2,484	2,958	3,264	3,908	2,352	2,086	2,828	2,464	2,354
'11 WE	1,048	1,302	1,220	1,276	1,804	2,726	2,674	3,182	2,668	2,150	1,648	1,154
'12 WD	2,120	2,236	2,258	2,512	3,026	3,430	4,086	3,662	3,144	2,788	2,458	2,360
'12 WE	1,814	2,182	2,068	2,318	3,146	3,654	4,280	4,082	3,336	2,626	2,166	1,876
'13 WD	2,058	2,268	2,210	2,358	2,962	3,508	4,094	3,738	3,242	2,854	2,516	
'13 WE	1,780	2,060	2,012	2,052	3,020	3,652	4,490	4,204	3,330	2,762	2,112	

Note: 'Weekday' defined as Monday-Friday, 'Weekend' defined as Saturday-Sunday

Weekday/Weekend Monthly Average Daily Traffic ('08-'13)



	Nov-08	Nov-09	Nov-10	Nov-11	Nov-12	Nov-13
Weekday	2,470	2,552	2,512	2,464	2,458	2,516
Weekend	2,056	2,136	2,130	2,062	2,166	2,112