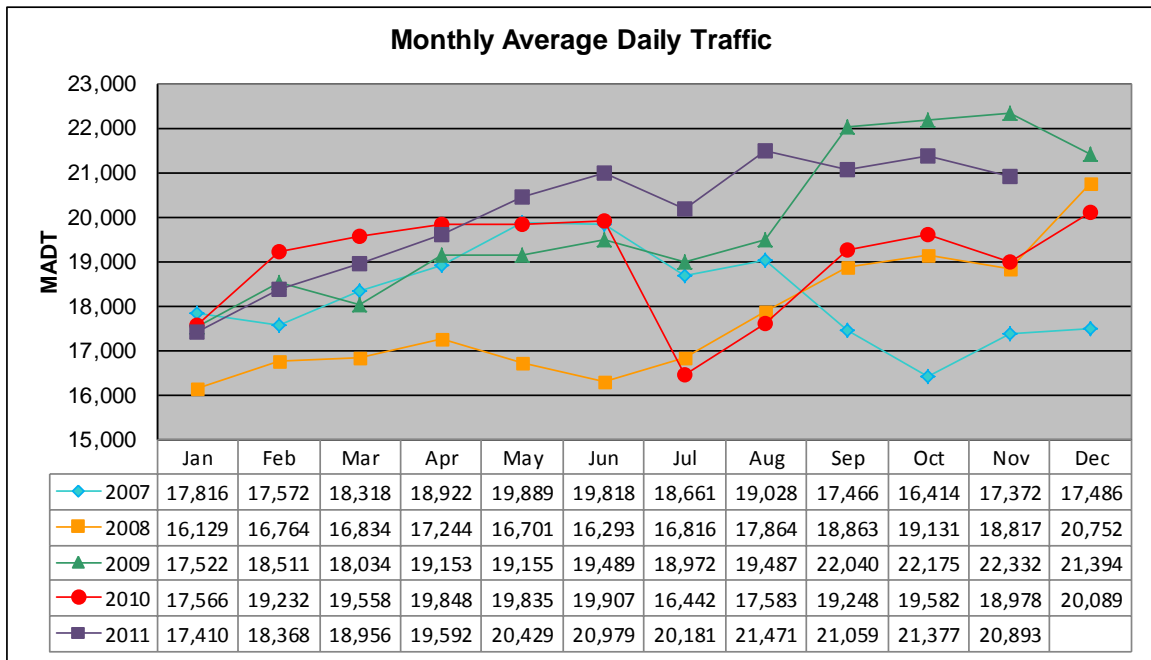


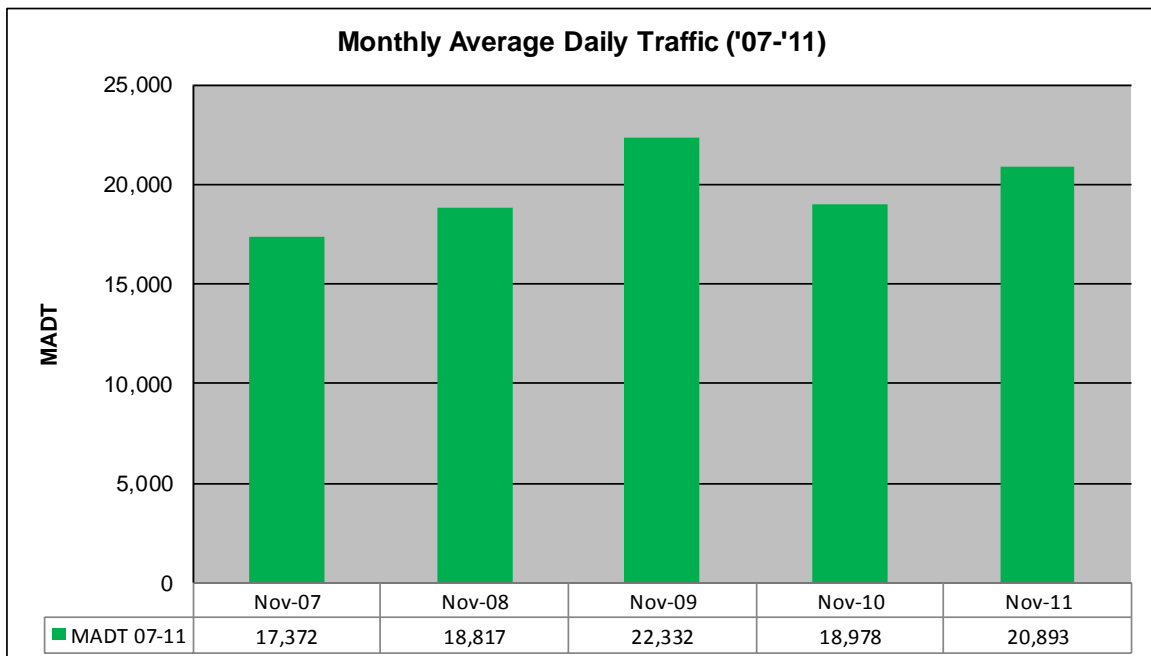
# MONTHLY REPORT, STATION NO. 464 (ATR)

## NOVEMBER 2011

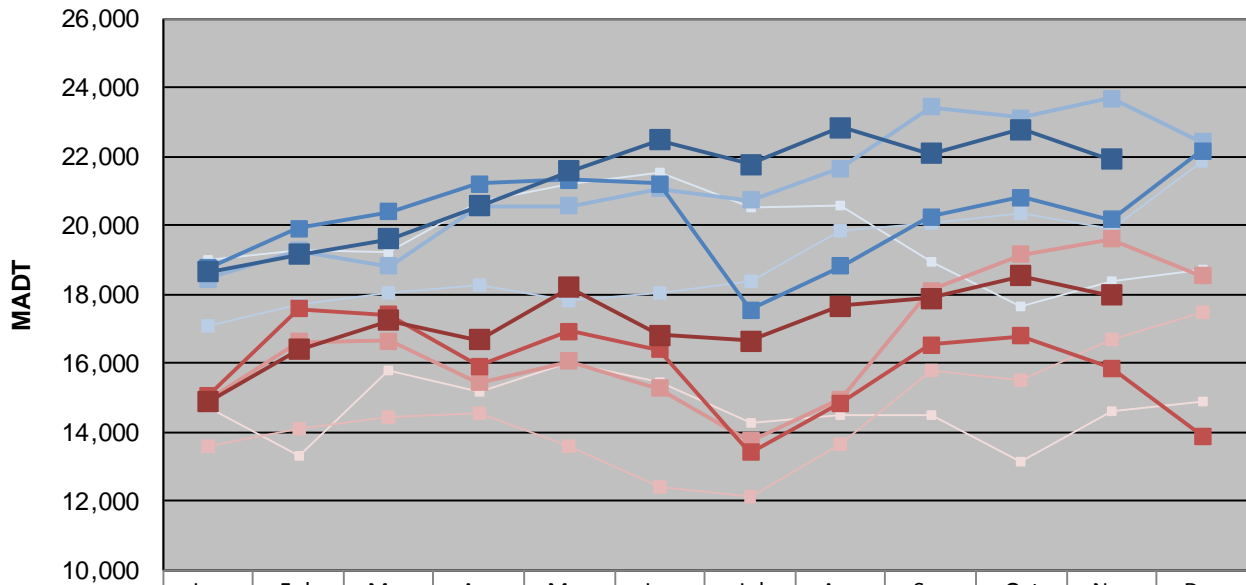
Station Measurement: VOLUME		
Route: CSAH 20	Route Direction: E/W	Lanes: 5
County: Ramsey	Closest City: Maplewood	
Functional Class: Urban Minor Arterial		
Location: E OF TH61 IN MAPLEWOOD		
Ref Post: 000+00.870	True Mile: 8.986	Sequence No. 9912
<b>Volume: 626,783</b>		<b>MADT: 20,893</b>
<b>Weekday (M-F) MADT: 21,906</b>		<b>Weekend (Sa-Su) MADT: 17,976</b>



Note: Decrease in traffic July to October 2007 and July to November 2010 due to construction on TH 61... Addition of a parallel route kept traffic relatively low through November 2008



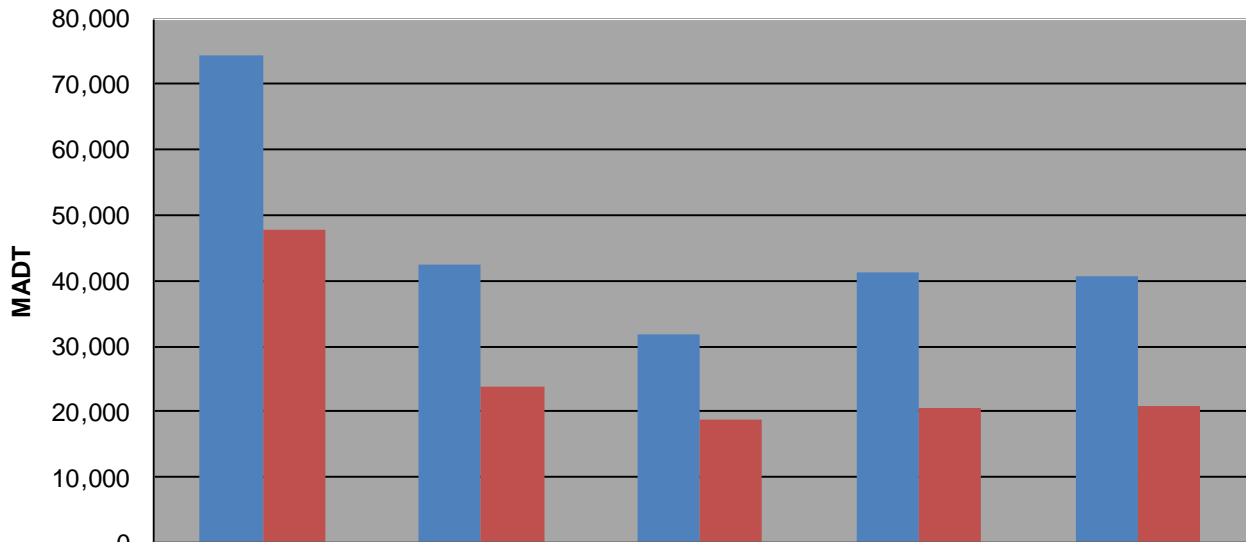
### Weekday (WD)/Weekend (WE) Monthly Average Daily Traffic



	Jan	Feb	Mar	Apr	May	Jun	Jul	Aug	Sep	Oct	Nov	Dec
'07 WD	18,996	19,280	19,240	20,682	21,192	21,554	20,526	20,580	18,966	17,630	18,372	18,732
'07 WE	14,734	13,304	15,806	15,176	16,026	15,438	14,256	14,474	14,466	13,122	14,624	14,860
'08 WD	17,068	17,686	18,040	18,246	17,790	18,038	18,380	19,820	20,054	20,328	19,884	21,862
'08 WE	13,616	14,090	14,424	14,536	13,618	12,404	12,128	13,676	15,806	15,488	16,686	17,488
'09 WD	18,446	19,264	18,818	20,536	20,548	21,066	20,740	21,666	23,436	23,108	23,692	22,412
'09 WE	14,902	16,628	16,632	15,422	16,056	15,276	13,748	14,950	18,116	19,142	19,604	18,520
'10 WD	18,750	19,900	20,386	21,192	21,330	21,204	17,542	18,824	20,236	20,808	20,154	22,160
'10 WE	15,034	17,566	17,394	15,912	16,926	16,396	13,416	14,850	16,522	16,782	15,850	13,886
'11 WD	18,650	19,148	19,602	20,562	21,566	22,484	21,758	22,842	22,090	22,786	21,906	
'11 WE	14,884	16,392	17,250	16,668	18,194	16,806	16,648	17,652	17,890	18,526	17,976	

Note: 'Weekday' defined as Monday-Friday, 'Weekend' defined as Saturday-Sunday

### Weekday/Weekend Monthly Average Daily Traffic ('07-'11)



	Nov-07	Nov-08	Nov-09	Nov-10	Nov-11
Weekday	74,376	42,496	31,794	41,238	40,818
Weekend	47,662	23,746	18,668	20,434	20,724