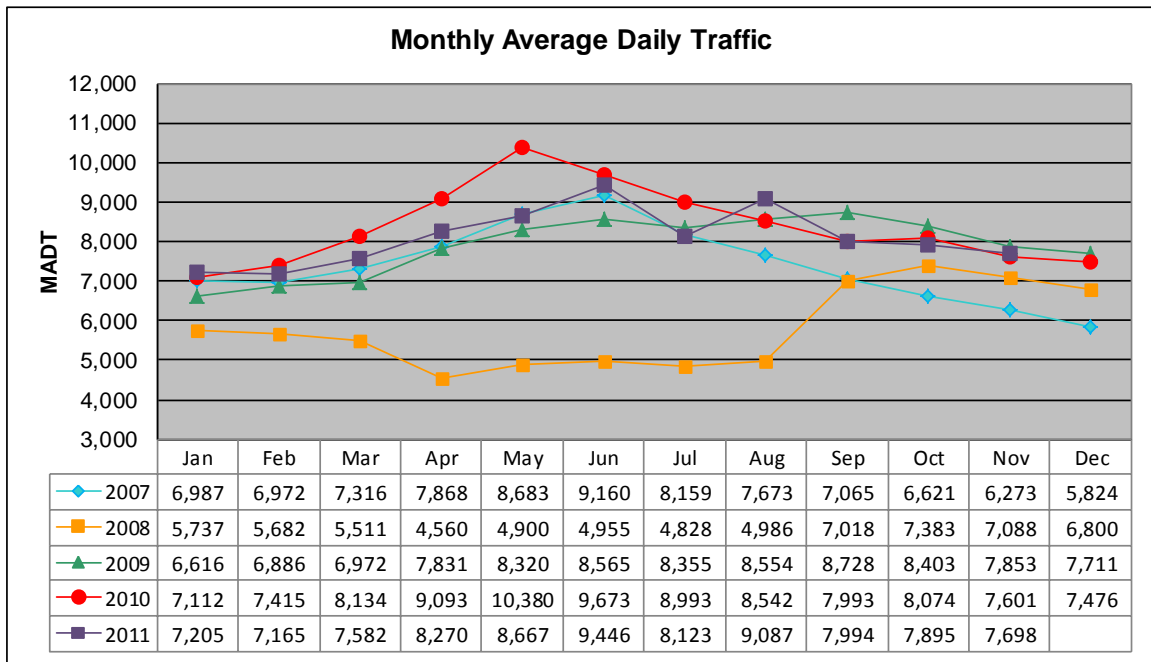


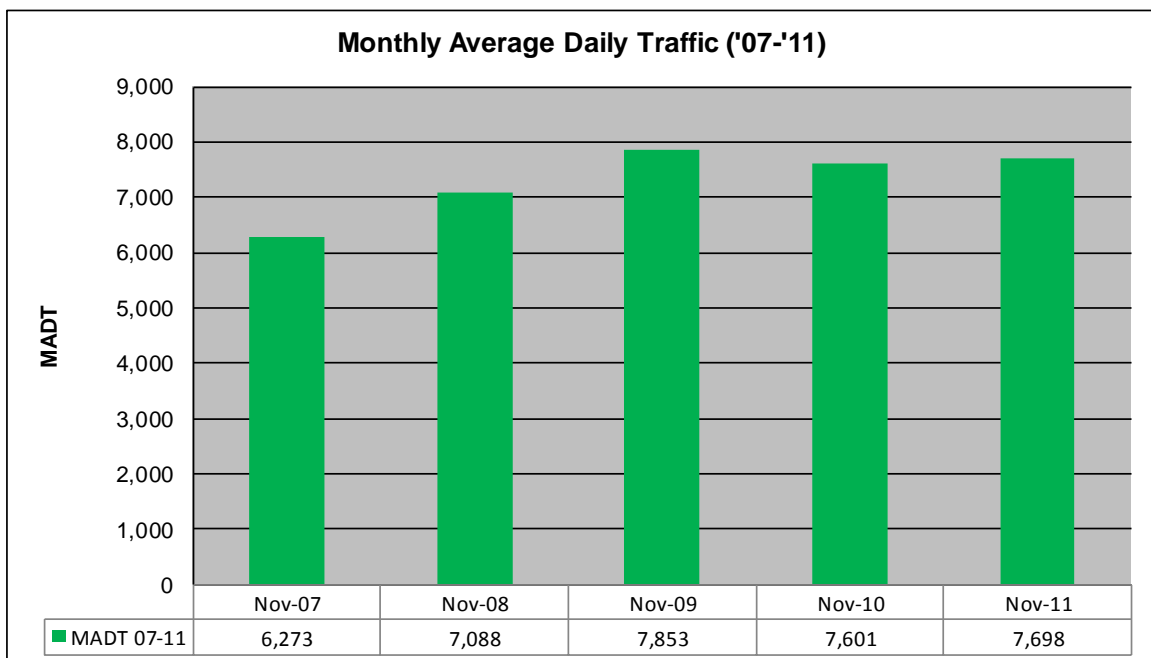
MONTHLY REPORT, STATION NO. 422 (ATR)

NOVEMBER 2011

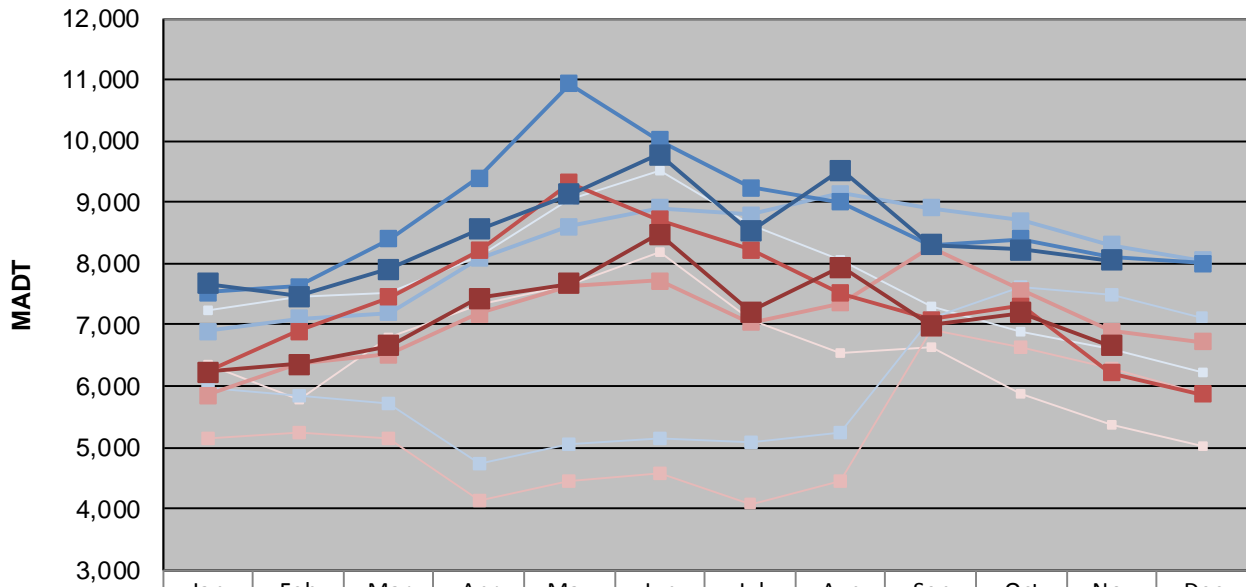
Station Measurement: VOLUME		
Route: CSAH 14	Route Direction: E/W	Lanes: 2
County: Anoka		Closest City: Blaine
Functional Class: Urban Other Principal Arterial		
Location: .7 MI W OF CSAH17 (LEXINGTON AVE NE) IN BLAINE		
Ref Post: 010+00.100	True Mile: 10.1	Sequence No. 9893
Volume: 230,926		MADT: 7,698
Weekday (M-F) MADT: 8,046		Weekend (Sa-Su) MADT: 6,658



Note: Decrease in traffic October 2007 to September 2008 due to construction on TH 65 & CSAH 14



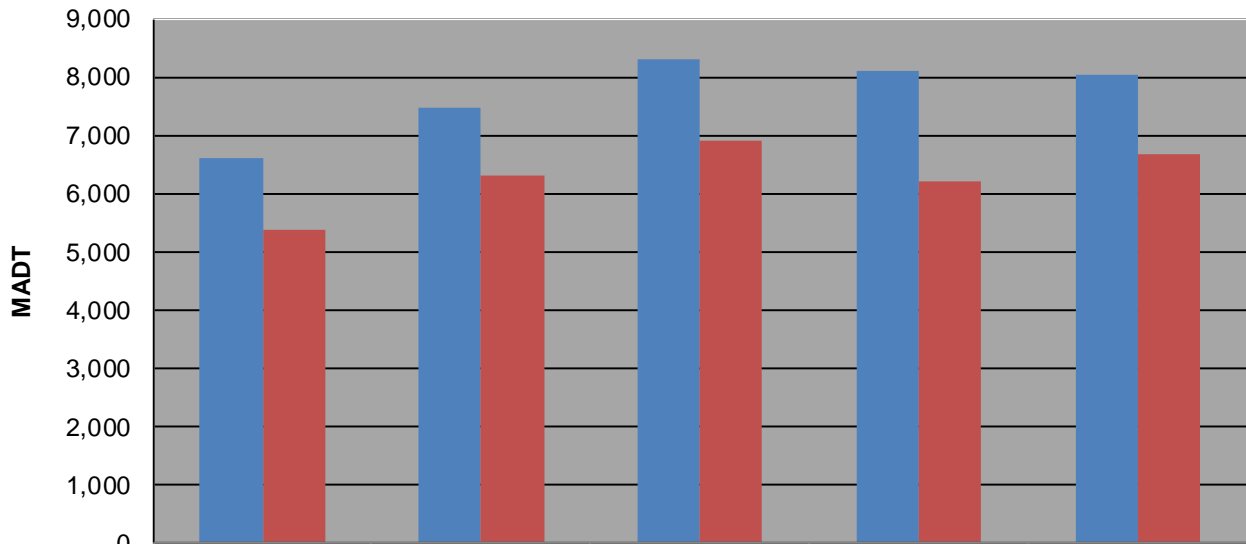
Weekday (WD)/Weekend (WE) Monthly Average Daily Traffic



	Jan	Feb	Mar	Apr	May	Jun	Jul	Aug	Sep	Oct	Nov	Dec
'07 WD	7,252	7,444	7,510	8,130	9,042	9,530	8,628	8,048	7,286	6,890	6,596	6,224
'07 WE	6,336	5,790	6,804	7,338	7,640	8,196	7,076	6,528	6,622	5,890	5,368	5,022
'08 WD	5,960	5,834	5,712	4,720	5,052	5,132	5,078	5,230	7,106	7,630	7,486	7,124
'08 WE	5,144	5,232	5,136	4,138	4,450	4,568	4,086	4,436	6,916	6,620	6,292	5,866
'09 WD	6,896	7,098	7,204	8,078	8,608	8,912	8,796	9,142	8,906	8,694	8,310	8,046
'09 WE	5,858	6,358	6,514	7,182	7,646	7,714	7,038	7,354	8,268	7,554	6,904	6,730
'10 WD	7,532	7,622	8,400	9,392	10,926	10,018	9,244	9,000	8,308	8,394	8,098	8,010
'10 WE	6,228	6,902	7,450	8,212	9,326	8,720	8,220	7,516	7,092	7,306	6,220	5,862
'11 WD	7,670	7,474	7,910	8,566	9,128	9,778	8,522	9,520	8,308	8,226	8,046	
'11 WE	6,234	6,366	6,656	7,434	7,678	8,478	7,216	7,940	6,986	7,192	6,658	

Note: 'Weekday' defined as Monday-Friday, 'Weekend' defined as Saturday-Sunday

Weekday/Weekend Monthly Average Daily Traffic ('07-'11)



	Nov-07	Nov-08	Nov-09	Nov-10	Nov-11
Weekday	6,596	7,486	8,310	8,098	8,046
Weekend	5,368	6,292	6,904	6,220	6,658