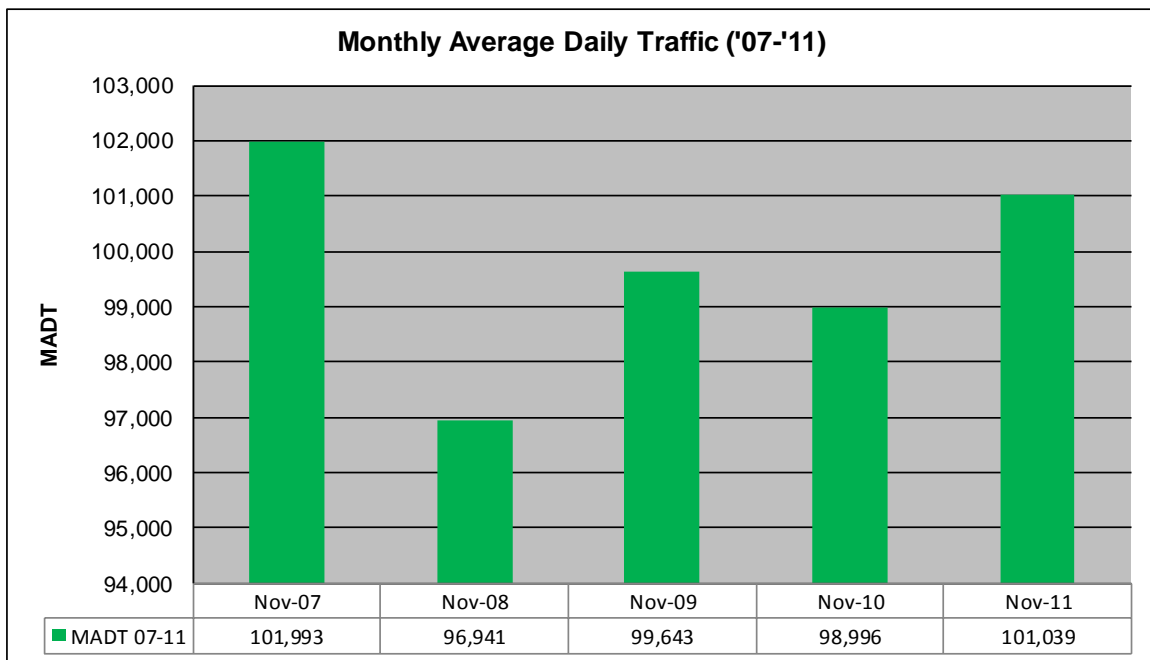
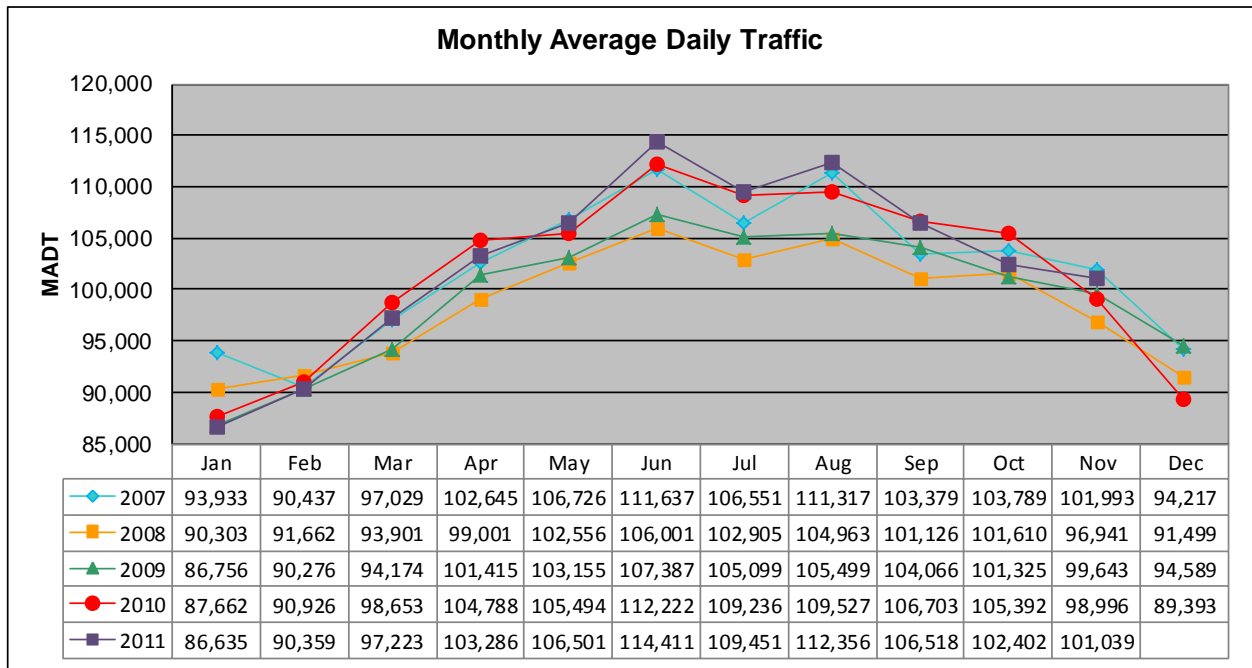


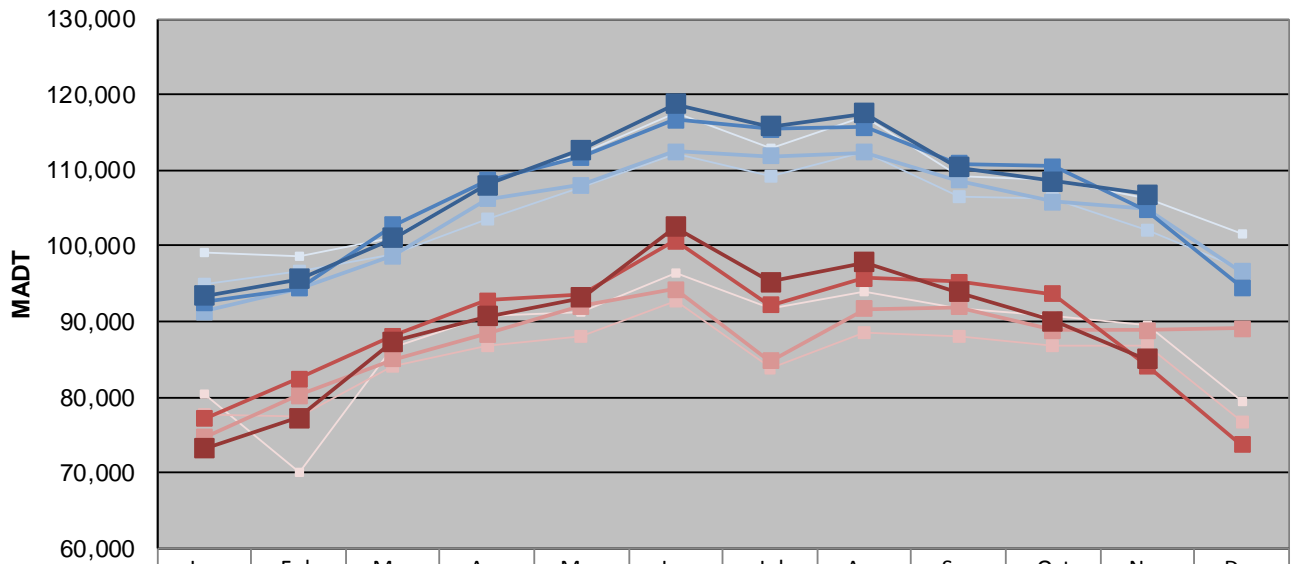
MONTHLY REPORT, STATION NO. 305 (ATR)

NOVEMBER 2011

Station Measurement: VOLUME		
Route: I-35	Route Direction: N/S	Lanes: 6
County: Dakota		Closest City: Burnsville
Functional Class: Urban Principal Arterial - Interstate		
Location: S OF MSAS101 (CRYSTAL LAKE RD W) IN BURNSVILLE		
Ref Post: 087+00.070	True Mile: 87.071	Sequence No. 6786
Volume: 3,031,166		MADT: 101,039
Weekday (M-F) MADT: 106,794		Weekend (Sa-Su) MADT: 85,042



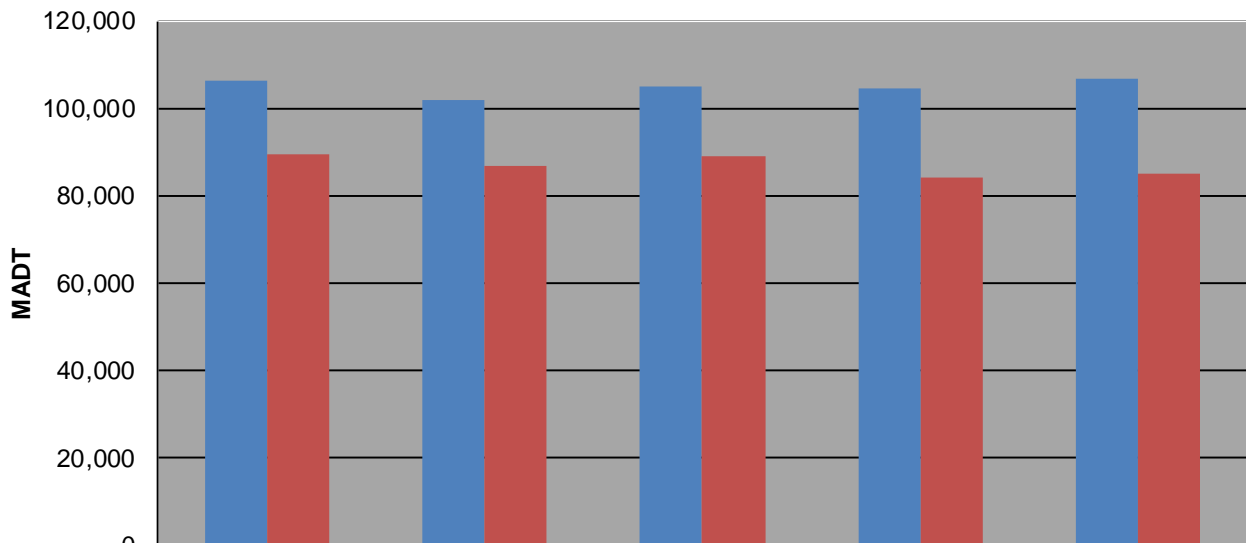
Weekday (WD)/Weekend (WE) Monthly Average Daily Traffic



	Jan	Feb	Mar	Apr	May	Jun	Jul	Aug	Sep	Oct	Nov	Dec
'07 WD	99,164	98,582	101,110	108,132	112,142	117,546	112,836	117,028	109,200	108,776	106,294	101,570
'07 WE	80,464	70,072	86,592	90,772	91,228	96,500	91,768	93,874	91,738	90,816	89,594	79,322
'08 WD	94,934	96,572	98,948	103,588	107,740	112,156	109,280	112,416	106,402	106,268	102,016	96,846
'08 WE	77,642	77,494	84,016	86,688	88,066	92,608	83,768	88,622	88,076	86,888	86,790	76,618
'09 WD	91,242	94,326	98,682	106,182	108,026	112,522	111,880	112,294	108,672	105,796	104,912	96,598
'09 WE	74,622	80,150	85,012	88,382	91,982	94,228	84,758	91,630	91,934	88,816	88,774	89,104
'10 WD	92,534	94,348	102,762	108,666	111,702	116,642	115,386	115,702	110,844	110,462	104,720	94,494
'10 WE	77,132	82,372	88,102	92,818	93,458	100,666	92,092	95,742	95,186	93,590	84,208	73,664
'11 WD	93,408	95,590	100,988	108,070	112,728	118,724	115,826	117,566	110,418	108,550	106,794	
'11 WE	73,206	77,256	87,314	90,664	93,156	102,436	95,216	97,874	93,868	90,038	85,042	

Note: 'Weekday' defined as Monday-Friday, 'Weekend' defined as Saturday-Sunday

Weekday/Weekend Monthly Average Daily Traffic ('07-'11)



	Nov-07	Nov-08	Nov-09	Nov-10	Nov-11
Weekday	106,294	102,016	104,912	104,720	106,794
Weekend	89,594	86,790	88,774	84,208	85,042