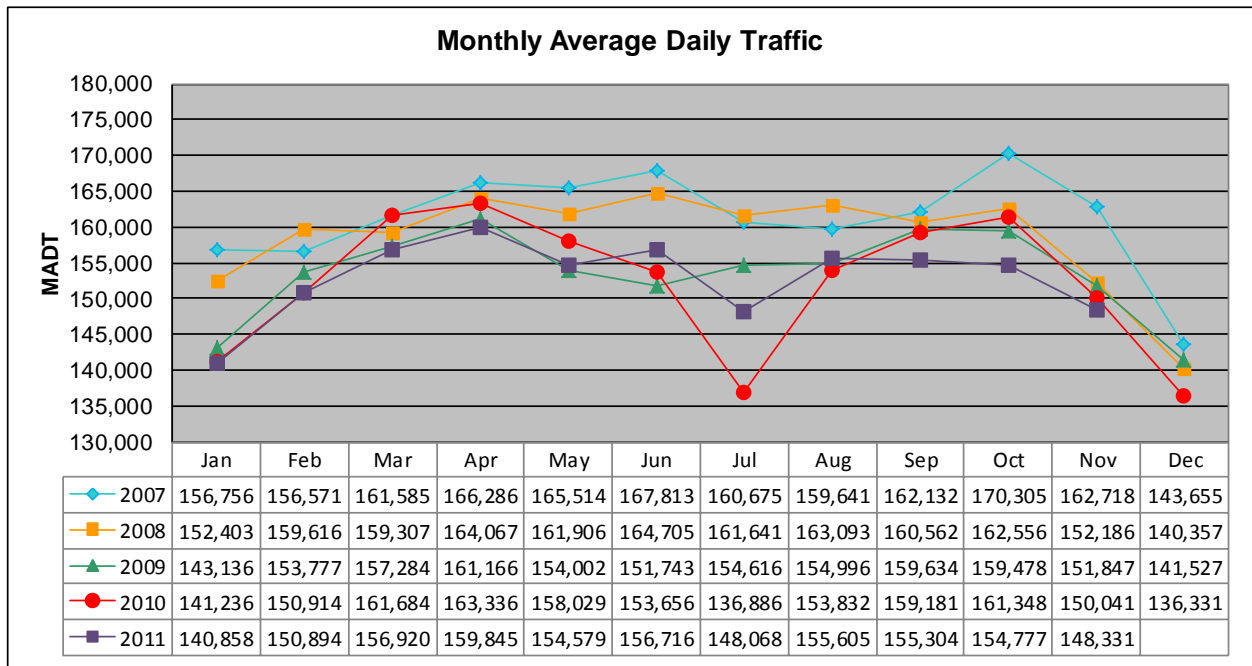


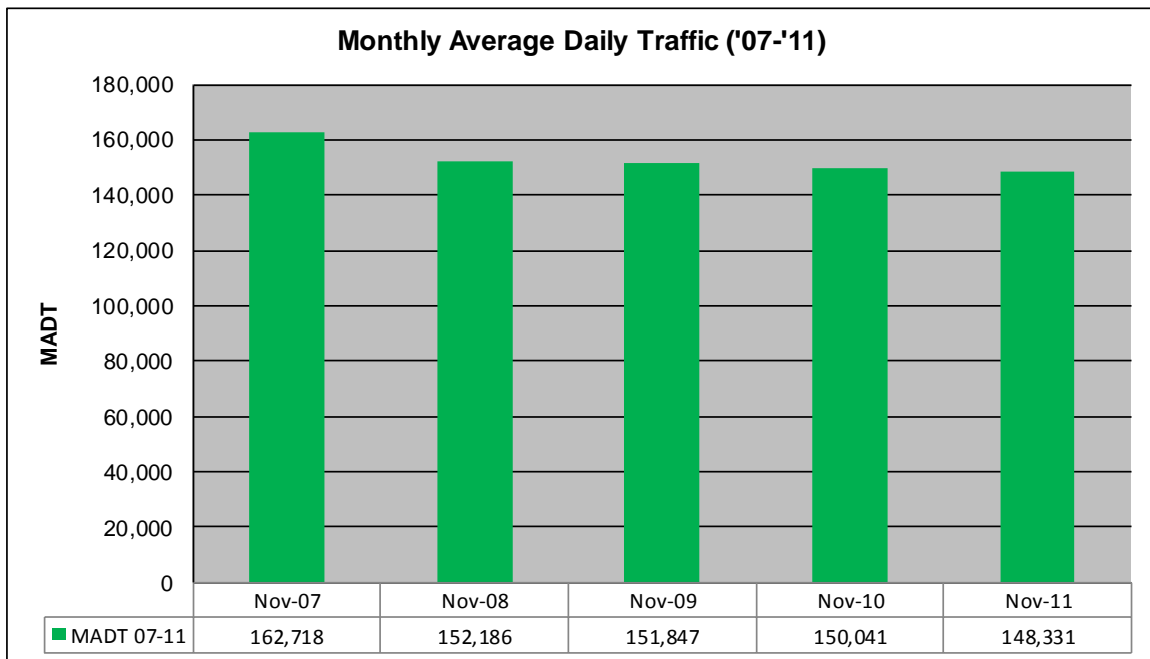
# MONTHLY REPORT, STATION NO. 301 (ATR)

## NOVEMBER 2011

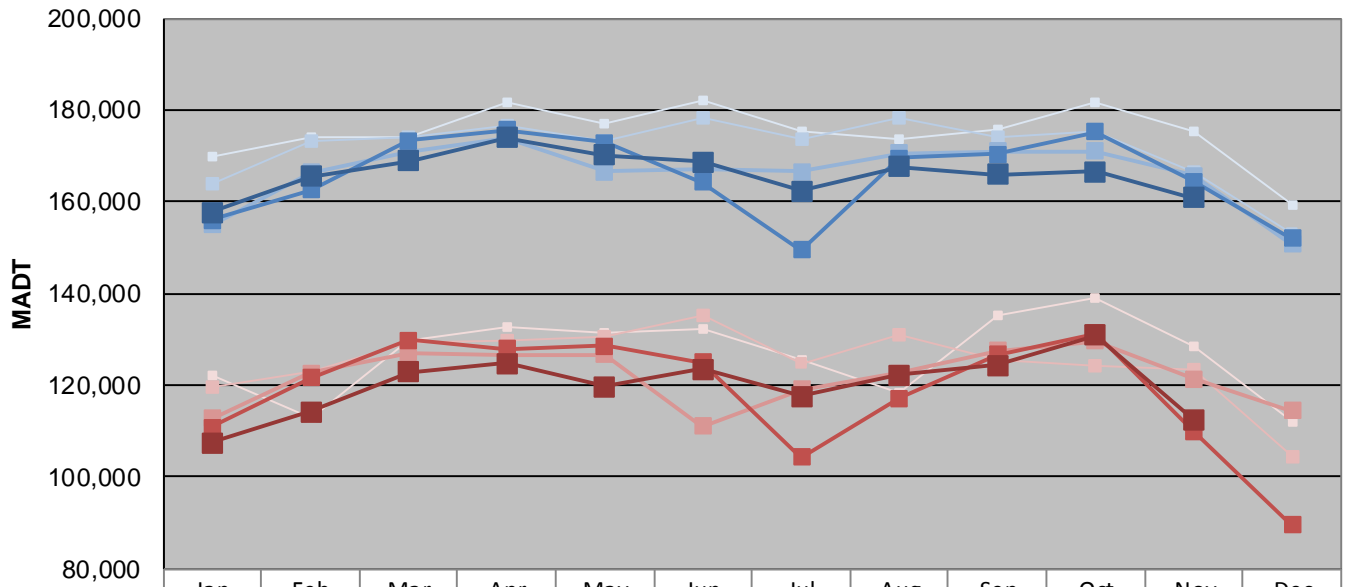
|   |                      |                                      |
|---|----------------------|--------------------------------------|
| Station Measurement: VOLUME                             |                      |                                      |
| Route: I-94   | Route Direction: E/W | Lanes: 8                             |
| County: Ramsey  |                      | Closest City: St Paul                |
| Functional Class: Urban Principal Arterial - Interstate |                      |                                      |
| Location: W OF N VICTORIA ST IN ST PAUL                 |                      |                                      |
| Ref Post: 239+00.922                                    | True Mile: 240.541   | Sequence No. 9834                    |
| <b>Volume: 4,449,917</b>                                |                      | <b>MADT: 148,331</b>                 |
| <b>Weekday (M-F) MADT: 160,868</b>                      |                      | <b>Weekend (Sa-Su) MADT: 112,468</b> |



Note: Decrease in traffic July 2010 due to construction on I-94



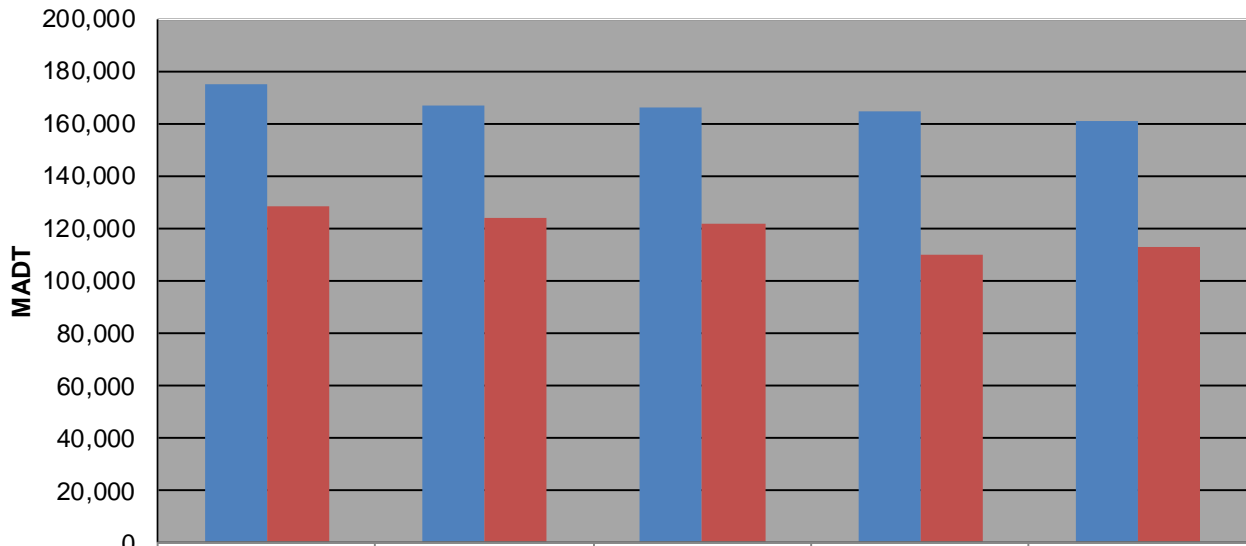
**Weekday (WD)/Weekend (WE) Monthly Average Daily Traffic**



|        | Jan     | Feb     | Mar     | Apr     | May     | Jun     | Jul     | Aug     | Sep     | Oct     | Nov     | Dec     |
|--------|---------|---------|---------|---------|---------|---------|---------|---------|---------|---------|---------|---------|
| '07 WD | 169,796 | 174,132 | 174,222 | 181,608 | 176,812 | 182,174 | 175,254 | 173,560 | 175,652 | 181,686 | 175,268 | 159,230 |
| '07 WE | 121,956 | 112,668 | 129,728 | 132,828 | 131,442 | 132,364 | 125,384 | 118,356 | 135,092 | 139,018 | 128,450 | 111,828 |
| '08 WD | 164,022 | 173,046 | 174,162 | 176,554 | 173,402 | 178,174 | 173,848 | 178,118 | 174,010 | 175,234 | 166,502 | 152,944 |
| '08 WE | 119,424 | 123,108 | 129,470 | 129,572 | 130,784 | 135,182 | 124,796 | 130,842 | 125,606 | 124,394 | 123,556 | 104,488 |
| '09 WD | 154,912 | 166,262 | 170,934 | 173,746 | 166,524 | 167,006 | 166,644 | 170,662 | 171,070 | 170,932 | 165,672 | 150,774 |
| '09 WE | 112,660 | 122,564 | 127,166 | 126,390 | 126,724 | 111,016 | 119,152 | 122,730 | 127,550 | 129,702 | 121,376 | 114,360 |
| '10 WD | 155,916 | 162,606 | 173,254 | 175,752 | 172,872 | 164,170 | 149,528 | 169,482 | 170,404 | 175,122 | 164,462 | 152,098 |
| '10 WE | 110,760 | 121,688 | 129,860 | 128,006 | 128,650 | 125,058 | 104,262 | 117,190 | 126,716 | 131,408 | 110,098 | 89,422  |
| '11 WD | 157,616 | 165,538 | 168,814 | 174,020 | 170,178 | 168,600 | 162,306 | 167,542 | 165,852 | 166,568 | 160,868 |         |
| '11 WE | 107,412 | 114,258 | 122,868 | 124,716 | 119,704 | 123,494 | 117,560 | 122,162 | 124,378 | 130,978 | 112,468 |         |

Note: 'Weekday' defined as Monday-Friday, 'Weekend' defined as Saturday-Sunday

**Weekday/Weekend Monthly Average Daily Traffic ('07-'11)**



|         | Nov-07  | Nov-08  | Nov-09  | Nov-10  | Nov-11  |
|---------|---------|---------|---------|---------|---------|
| Weekday | 175,268 | 166,502 | 165,672 | 164,462 | 160,868 |
| Weekend | 128,450 | 123,556 | 121,376 | 110,098 | 112,468 |