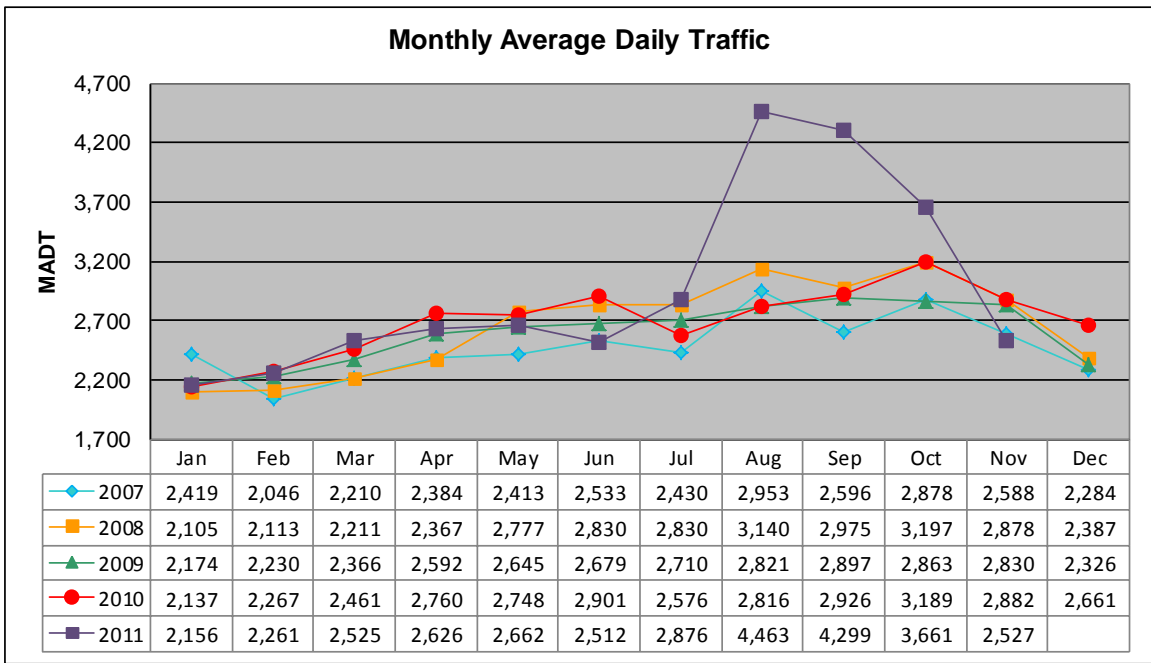


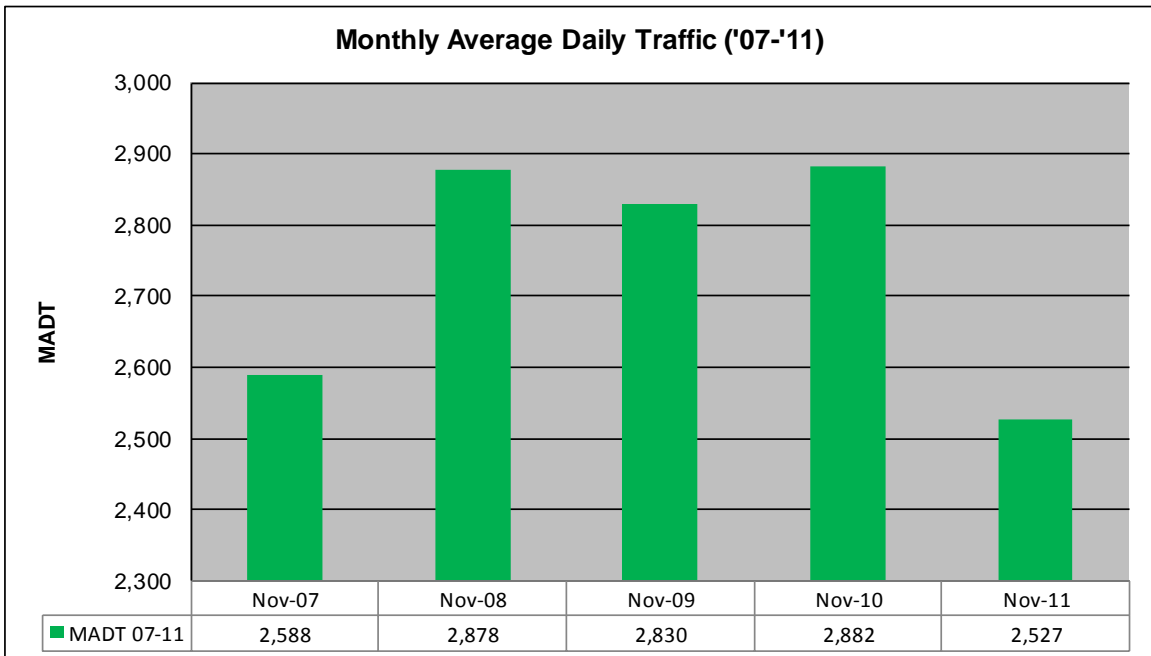
MONTHLY REPORT, STATION NO. 198 (ATR)

NOVEMBER 2011

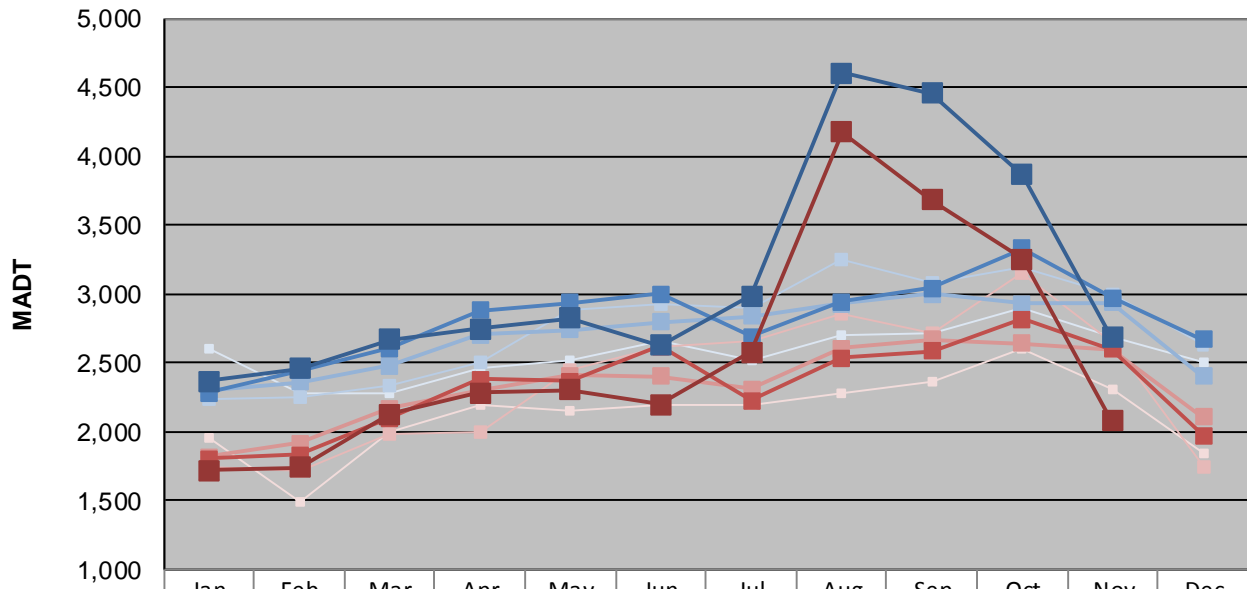
| | | |
|--|-----------------------------|------------------------------------|
| Station Measurement: VOLUME/SPEED/CLASS | | |
| Route: TH 212 | Route Direction: E/W | Lanes: 2 |
| County: Renville | Closest City: Granite Falls | |
| Functional Class: Rural Principal Arterial - Other | | |
| Location: E OF TH23, E OF GRANITE FALLS | | |
| Ref Post: 052+00.356 | True Mile: 52.936 | Sequence No. 9831 |
| Volume: 75,814 | | MADT: 2,527 |
| Weekday (M-F) MADT: 2,684 | | Weekend (Sa-Su) MADT: 2,076 |



Note: Increase in traffic May to October 2008 due to TH 7 detour... Decrease in traffic July 2010 and June 2011 due to construction on TH 212... Increase in traffic August to October 2011 due to TH 67 detour



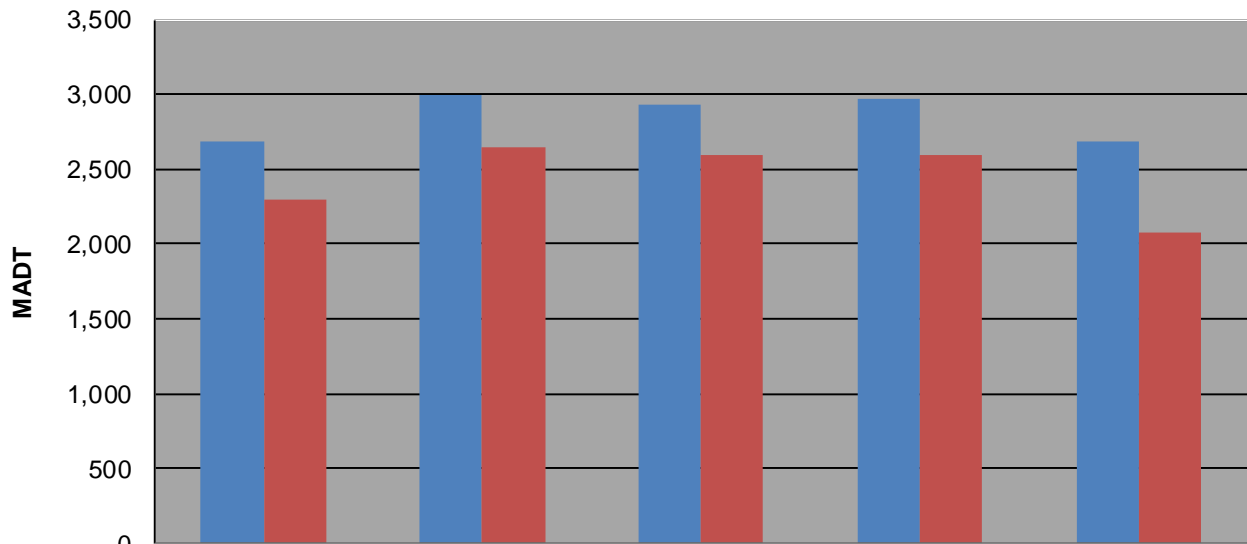
Weekday (WD)/Weekend (WE) Monthly Average Daily Traffic



| | Jan | Feb | Mar | Apr | May | Jun | Jul | Aug | Sep | Oct | Nov | Dec |
|--------|-------|-------|-------|-------|-------|-------|-------|-------|-------|-------|-------|-------|
| '07 WD | 2,598 | 2,272 | 2,282 | 2,466 | 2,512 | 2,660 | 2,524 | 2,706 | 2,712 | 2,900 | 2,682 | 2,502 |
| '07 WE | 1,950 | 1,484 | 1,994 | 2,192 | 2,150 | 2,198 | 2,188 | 2,272 | 2,366 | 2,606 | 2,302 | 1,840 |
| '08 WD | 2,240 | 2,248 | 2,330 | 2,508 | 2,886 | 2,920 | 2,896 | 3,252 | 3,082 | 3,188 | 2,996 | 2,624 |
| '08 WE | 1,748 | 1,716 | 1,982 | 1,998 | 2,448 | 2,610 | 2,656 | 2,856 | 2,712 | 3,152 | 2,644 | 1,742 |
| '09 WD | 2,306 | 2,356 | 2,476 | 2,704 | 2,740 | 2,796 | 2,838 | 2,932 | 2,998 | 2,930 | 2,936 | 2,404 |
| '09 WE | 1,820 | 1,914 | 2,168 | 2,302 | 2,406 | 2,400 | 2,312 | 2,604 | 2,670 | 2,642 | 2,598 | 2,106 |
| '10 WD | 2,284 | 2,442 | 2,604 | 2,878 | 2,938 | 2,996 | 2,692 | 2,946 | 3,040 | 3,328 | 2,972 | 2,668 |
| '10 WE | 1,802 | 1,828 | 2,100 | 2,382 | 2,364 | 2,618 | 2,226 | 2,532 | 2,582 | 2,816 | 2,600 | 1,972 |
| '11 WD | 2,366 | 2,460 | 2,666 | 2,748 | 2,822 | 2,624 | 2,984 | 4,600 | 4,458 | 3,862 | 2,684 | |
| '11 WE | 1,720 | 1,738 | 2,128 | 2,280 | 2,300 | 2,200 | 2,580 | 4,174 | 3,684 | 3,252 | 2,076 | |

Note: 'Weekday' defined as Monday-Friday, 'Weekend' defined as Saturday-Sunday

Weekday/Weekend Monthly Average Daily Traffic ('07-'11)



| | Nov-07 | Nov-08 | Nov-09 | Nov-10 | Nov-11 |
|---------|--------|--------|--------|--------|--------|
| Weekday | 2,682 | 2,996 | 2,936 | 2,972 | 2,684 |
| Weekend | 2,302 | 2,644 | 2,598 | 2,600 | 2,076 |