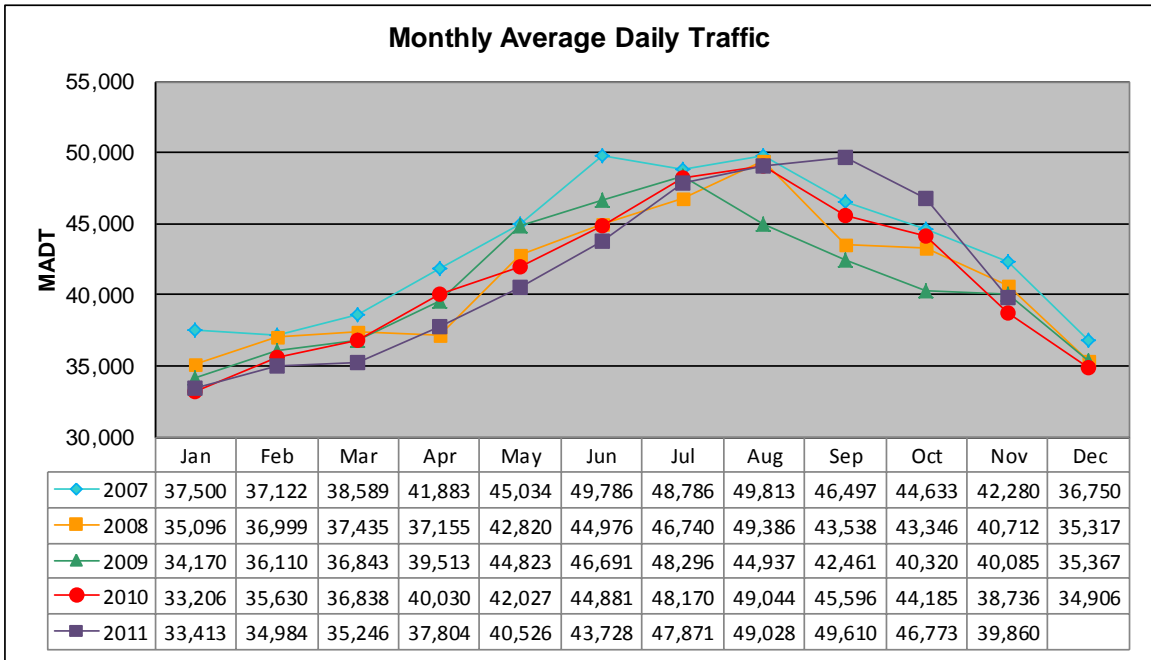


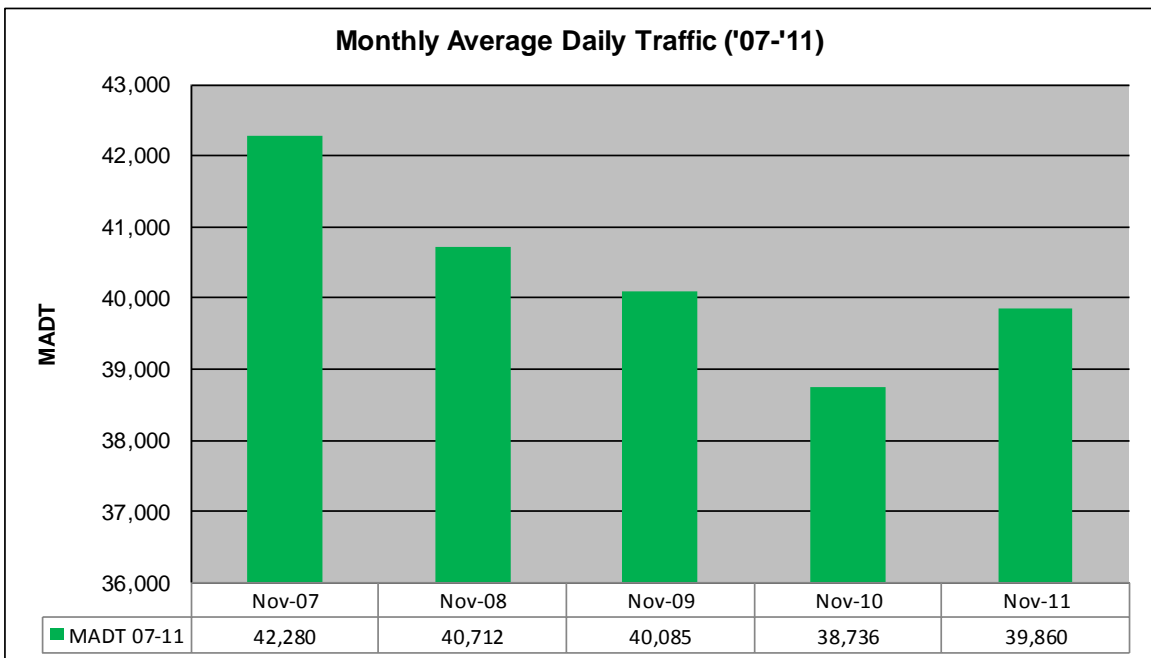
# MONTHLY REPORT, STATION NO. 191 (ATR)

## NOVEMBER 2011

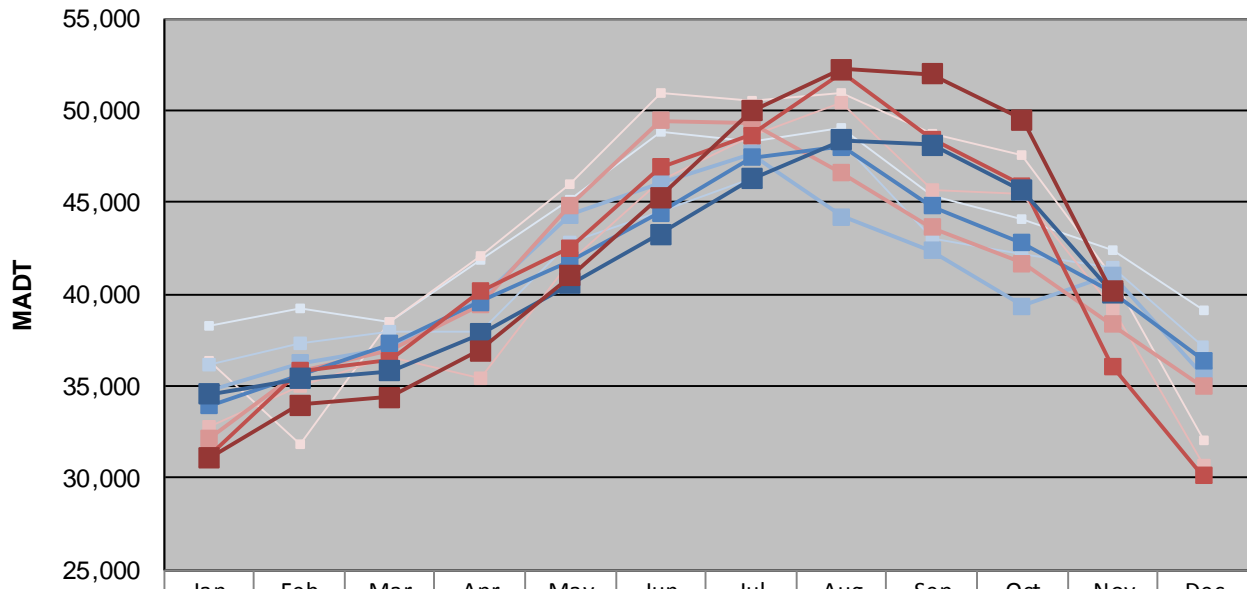
Station Measurement: VOLUME/SPEED/CLASS		
Route: I-35	Route Direction: N/S	Lanes: 4
County: Chisago		Closest City: Wyoming
Functional Class: Urban Principal Arterial - Interstate		
Location: 1.5 MI N OF CSAH22 (E VIKING BLVD), N OF WYOMING		
Ref Post: 137+00.500	True Mile: 137.519	Sequence No. 6784
<b>Volume: 1,195,812</b>		<b>MADT: 39,860</b>
<b>Weekday (M-F) MADT: 40,124</b>		<b>Weekend (Sa-Su) MADT: 40,134</b>



Note: Decrease in traffic August to October 2009 due to construction on I-35



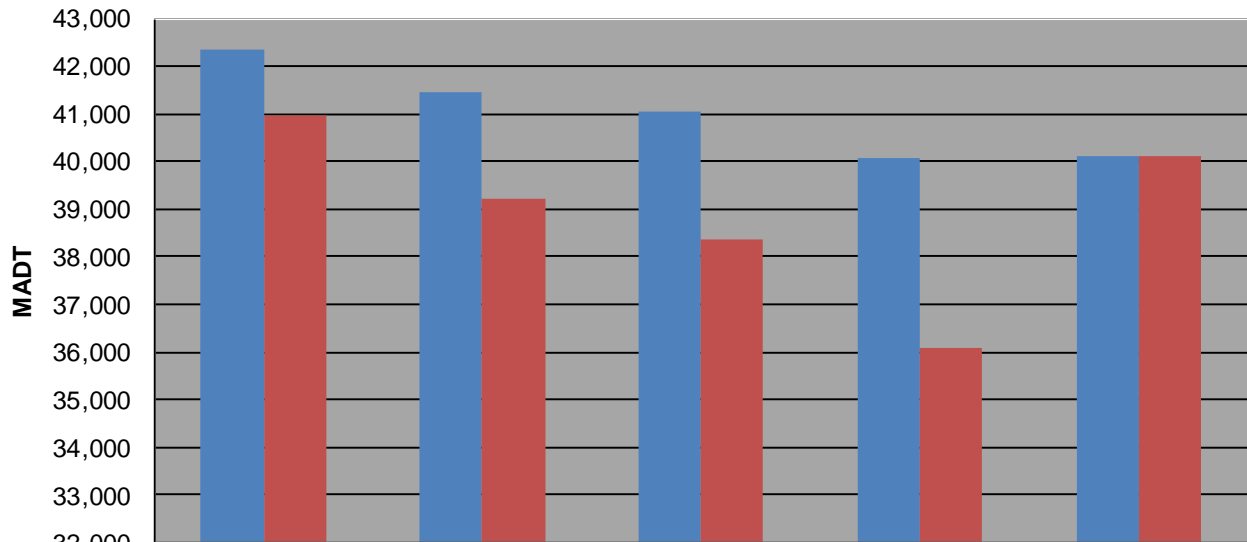
### Weekday (WD)/Weekend (WE) Monthly Average Daily Traffic



	Jan	Feb	Mar	Apr	May	Jun	Jul	Aug	Sep	Oct	Nov	Dec
'07 WD	38,242	39,244	38,488	41,874	45,126	48,814	48,298	49,020	45,366	44,106	42,364	39,090
'07 WE	36,372	31,816	38,518	42,070	45,974	50,904	50,496	50,958	48,760	47,596	40,964	32,058
'08 WD	36,174	37,310	37,978	37,954	42,862	44,550	46,324	48,286	43,060	42,228	41,452	37,160
'08 WE	32,806	35,034	36,576	35,402	41,802	46,142	48,592	50,420	45,624	45,494	39,230	30,676
'09 WD	34,726	36,240	37,104	39,690	44,308	46,084	47,636	44,238	42,390	39,386	41,046	35,560
'09 WE	32,132	35,784	36,980	39,388	44,838	49,454	49,266	46,584	43,640	41,668	38,348	34,962
'10 WD	33,906	35,560	37,304	39,560	41,864	44,442	47,458	48,024	44,800	42,780	40,084	36,388
'10 WE	31,202	35,806	36,396	40,164	42,532	46,914	48,634	52,092	48,460	45,916	36,096	30,142
'11 WD	34,574	35,384	35,844	37,830	40,574	43,288	46,268	48,396	48,140	45,638	40,124	
'11 WE	31,100	33,958	34,392	36,948	41,006	45,270	49,968	52,220	51,950	49,496	40,134	

Note: 'Weekday' defined as Monday-Friday, 'Weekend' defined as Saturday-Sunday

### Weekday/Weekend Monthly Average Daily Traffic ('07-'11)



	Nov-07	Nov-08	Nov-09	Nov-10	Nov-11
Weekday	42,364	41,452	41,046	40,084	40,124
Weekend	40,964	39,230	38,348	36,096	40,134