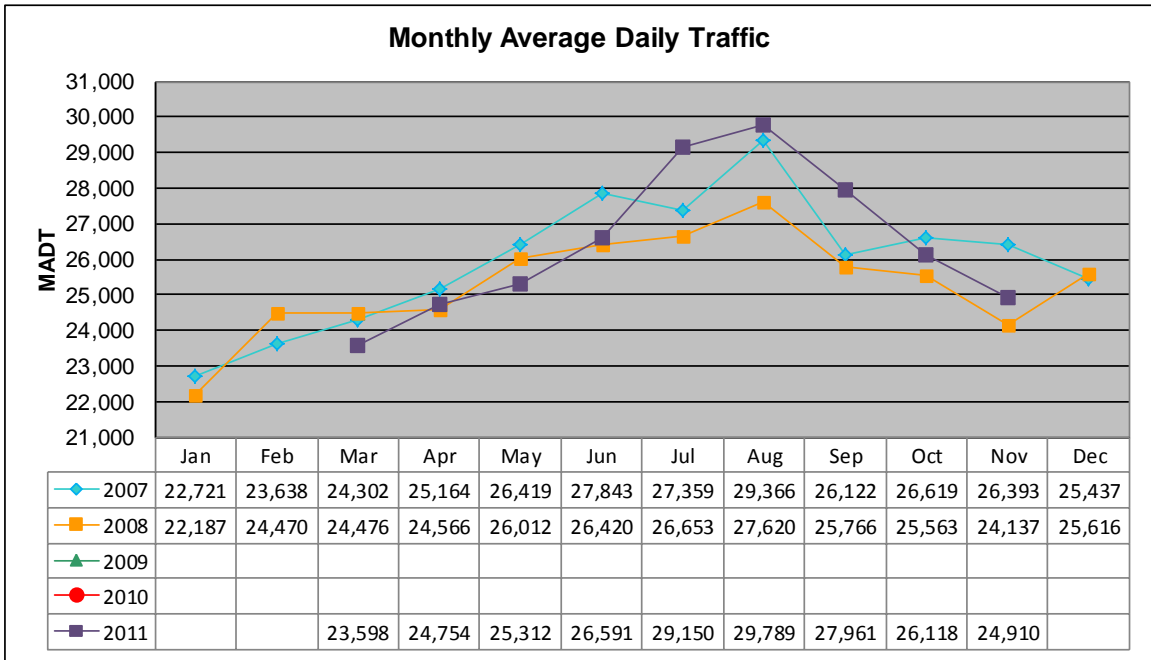


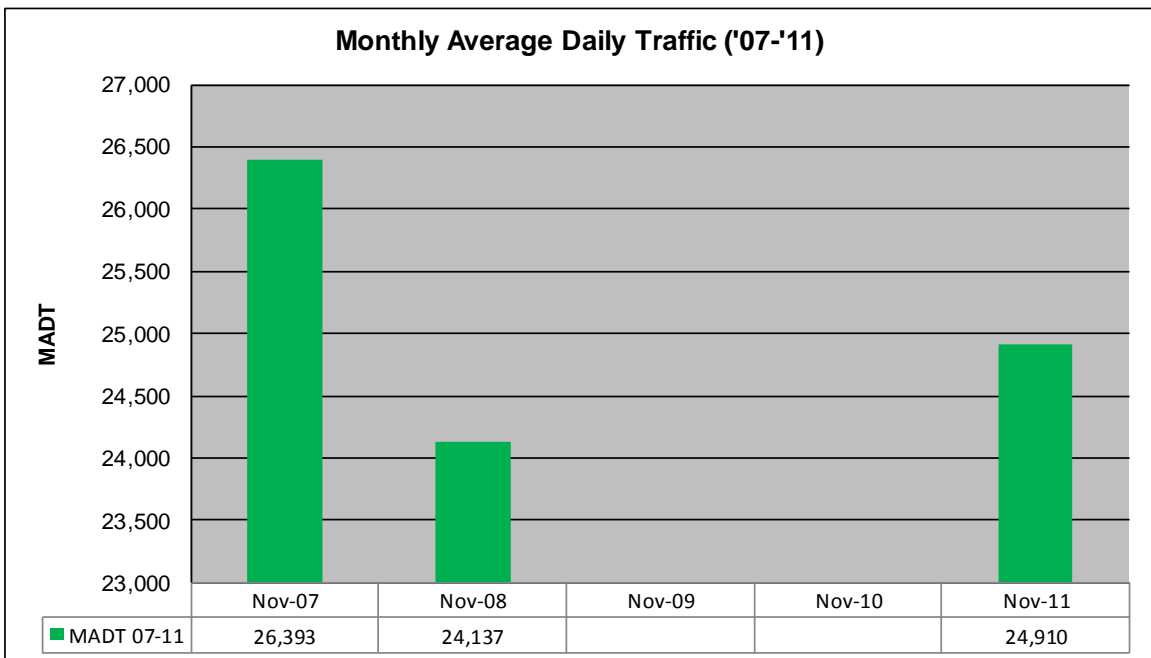
MONTHLY REPORT, STATION NO. 110 (ATR)

NOVEMBER 2011

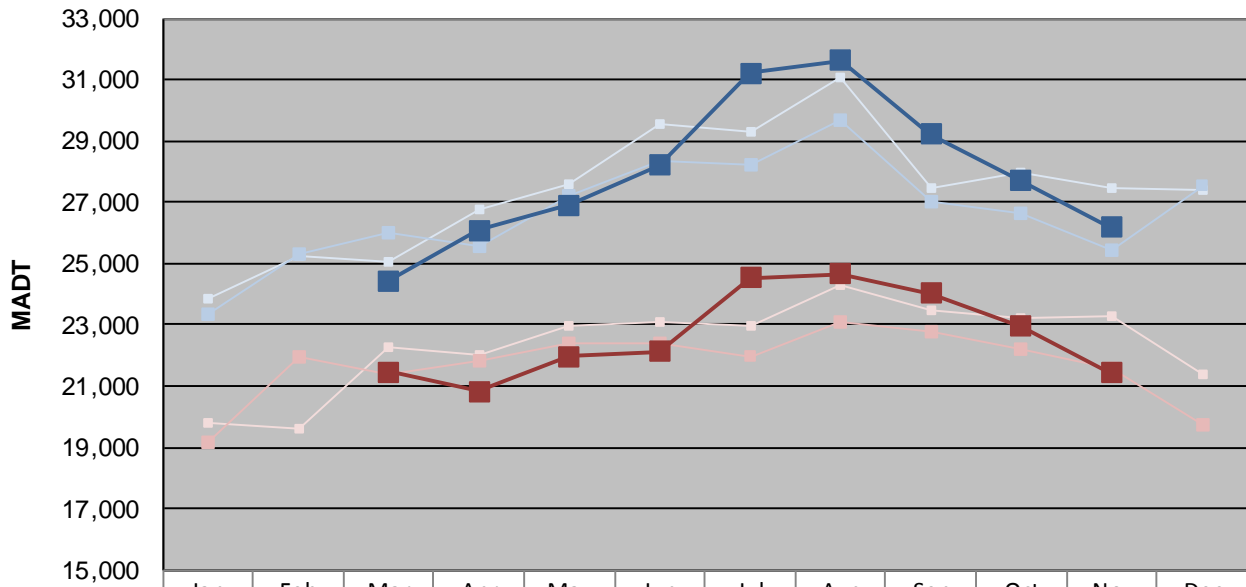
Station Measurement: VOLUME		
Route: TH 53	Route Direction: N/S	Lanes: 4
County: St Louis		Closest City: Duluth
Functional Class: Urban Other Principal Arterial		
Location: SE OF CSAH6 (MAPLE GROVE RD) IN DULUTH		
Ref Post: 005+00.000	True Mile: 6.129	Sequence No. 9827
Volume: 747,292		MADT: 24,910
Weekday (M-F) MADT: 26,170		Weekend (Sa-Su) MADT: 21,422



Note: No data January 2009 to February 2011 due to sensors destroyed by construction



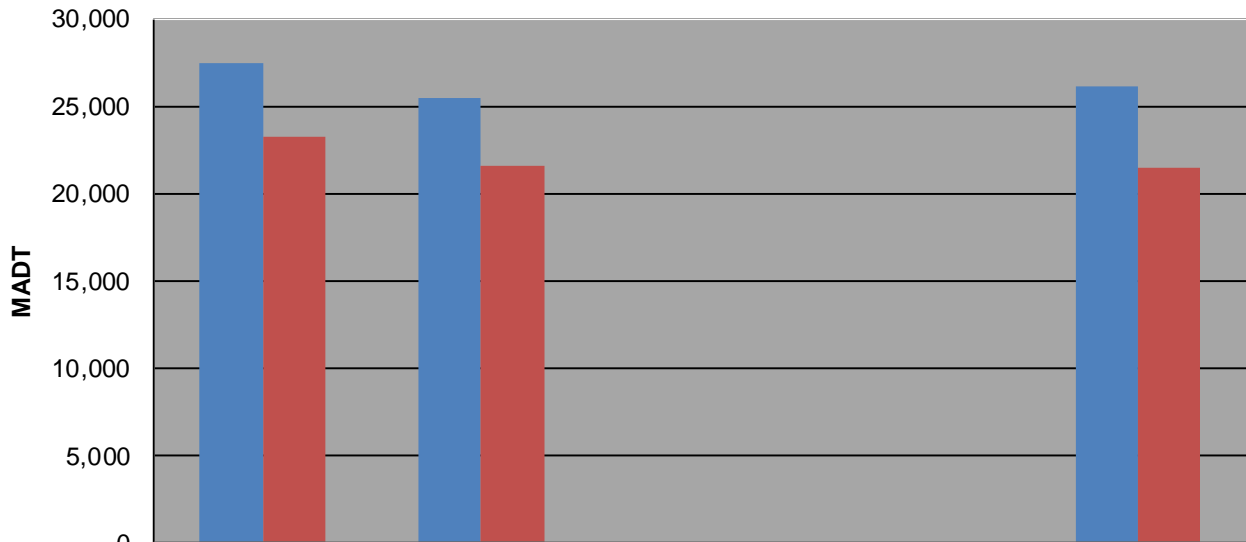
Weekday (WD)/Weekend (WE) Monthly Average Daily Traffic



	Jan	Feb	Mar	Apr	May	Jun	Jul	Aug	Sep	Oct	Nov	Dec
'07 WD	23,858	25,250	25,036	26,746	27,614	29,576	29,298	31,070	27,462	27,942	27,470	27,408
'07 WE	19,778	19,610	22,286	21,994	22,976	23,112	22,952	24,278	23,442	23,236	23,268	21,378
'08 WD	23,372	25,298	26,014	25,540	27,192	28,360	28,236	29,678	27,016	26,626	25,430	27,556
'08 WE	19,146	21,936	21,380	21,834	22,418	22,382	21,972	23,116	22,774	22,176	21,550	19,710
'09 WD												
'09 WE												
'10 WD												
'10 WE												
'11 WD			24,442	26,078	26,914	28,220	31,214	31,618	29,224	27,690	26,170	
'11 WE			21,462	20,822	21,980	22,136	24,544	24,660	24,016	22,956	21,422	

Note: 'Weekday' defined as Monday-Friday, 'Weekend' defined as Saturday-Sunday

Weekday/Weekend Monthly Average Daily Traffic ('07-'11)



	Nov-07	Nov-08	Nov-09	Nov-10	Nov-11
Weekday	27,470	25,430			26,170
Weekend	23,268	21,550			21,422