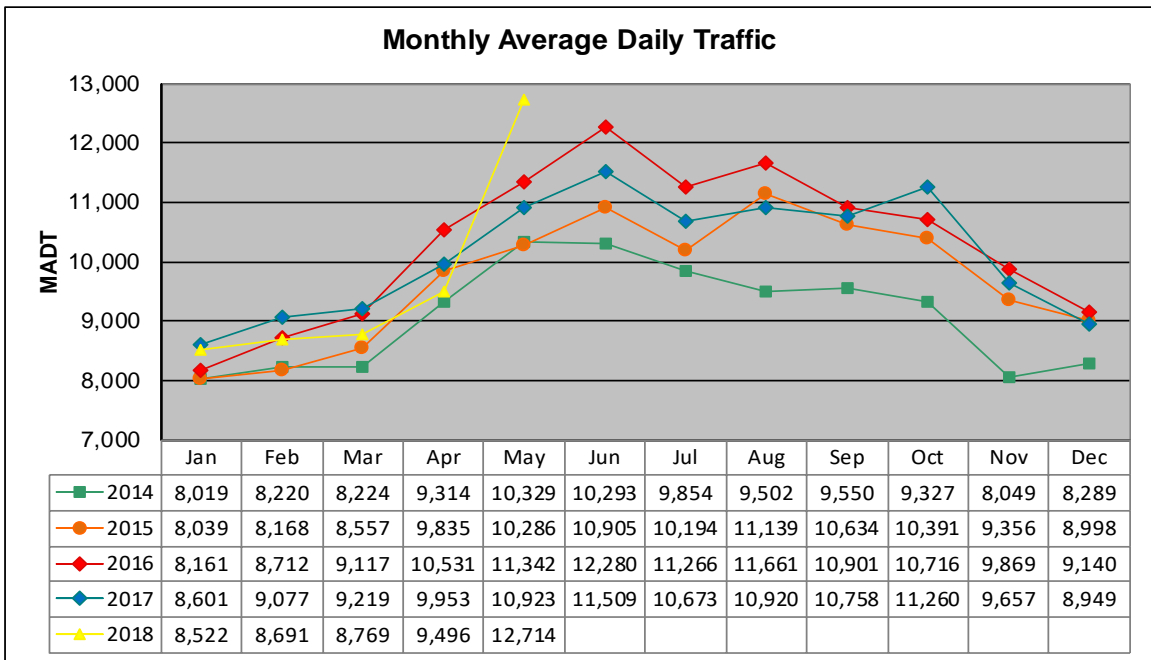


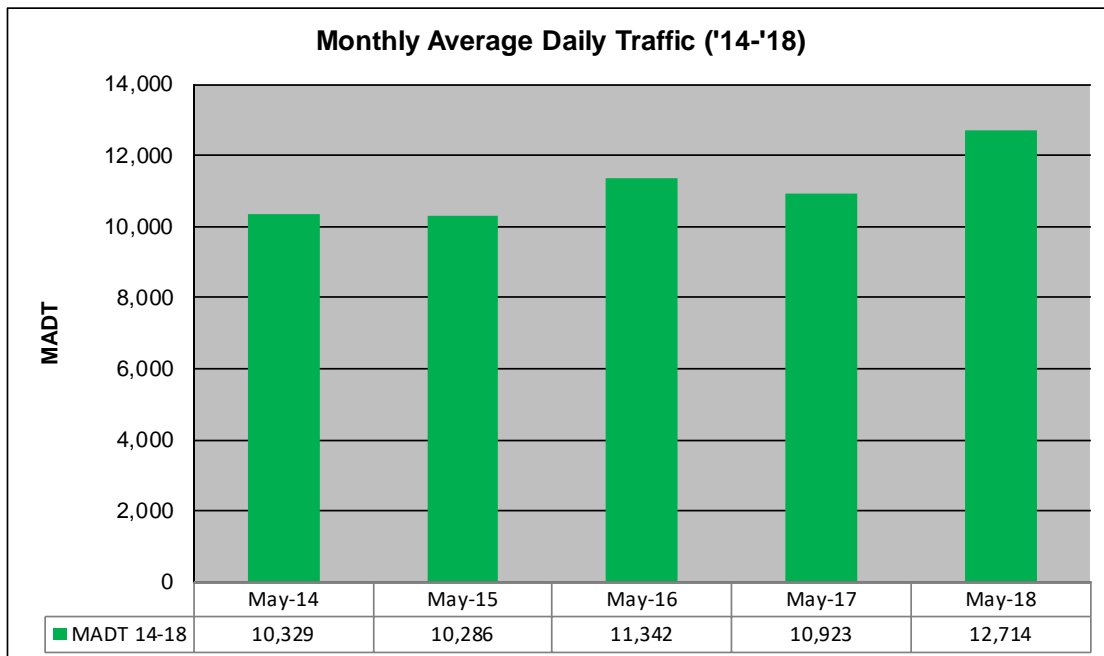
MONTHLY REPORT, STATION NO. 390 (ATR)

MAY 2018

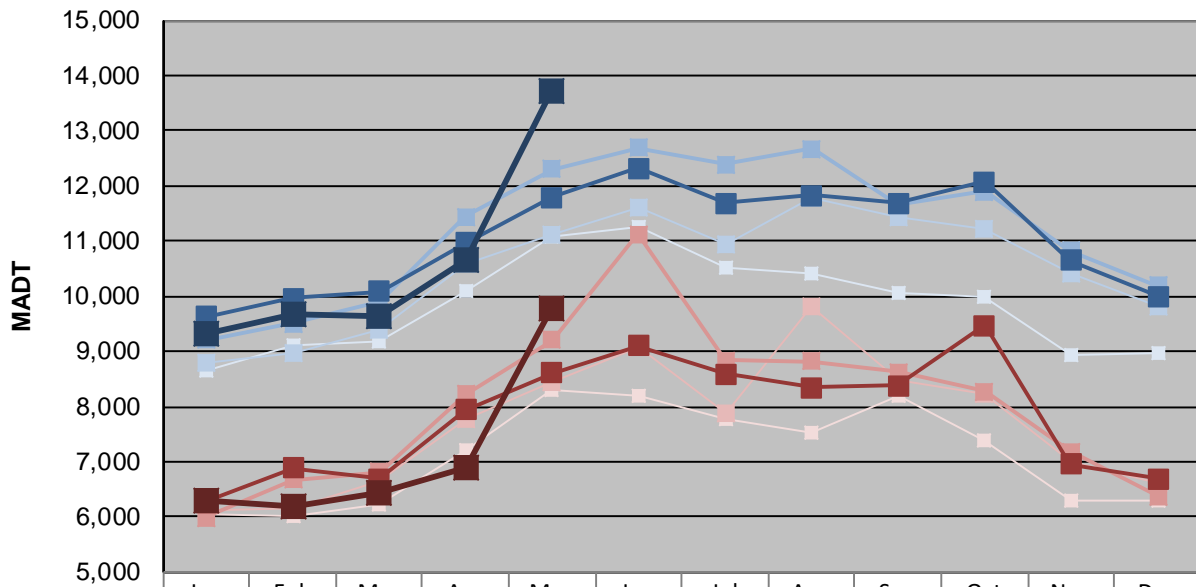
Station Measurement: VOLUME/SPEED/CLASS		
Route: TH 61	Route Direction: N/S	Lanes: 2
County: Washington		Closest City: Hugo
Functional Class: Urban Minor Arterial		
Location: .9 MI N OF CSAH8 IN HUGO		
Ref Post: 153+00.300	True Mile: 153.097	Sequence No. 9878
Volume: 394,130		MADT: 12,714
Weekday (M-F) MADT: 13,730		Weekend (Sa-Su) MADT: 9,776



Note: Increase in traffic August 2015, October 2017, and May 2018 due to detour from I-35E



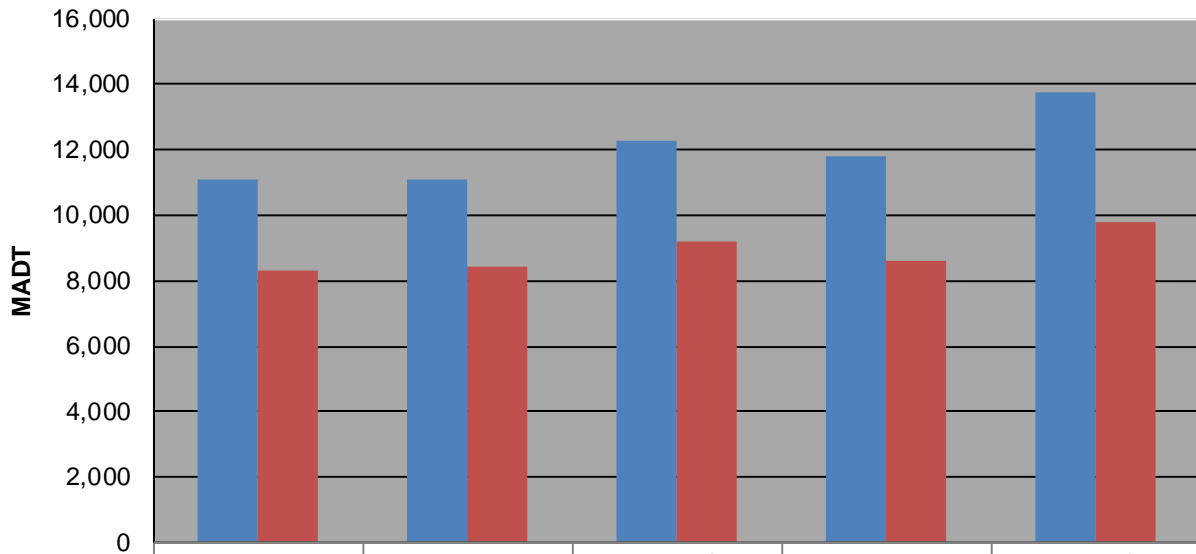
Weekday (WD)/Weekend (WE) Monthly Average Daily Traffic



	Jan	Feb	Mar	Apr	May	Jun	Jul	Aug	Sep	Oct	Nov	Dec
'14 WD	8,660	9,098	9,196	10,088	11,074	11,252	10,530	10,418	10,070	9,984	8,918	8,980
'14 WE	6,032	6,022	6,208	7,196	8,298	8,190	7,786	7,538	8,212	7,396	6,312	6,278
'15 WD	8,784	8,976	9,392	10,582	11,118	11,602	10,952	11,800	11,422	11,228	10,398	9,810
'15 WE	6,102	6,150	6,664	7,760	8,438	9,082	7,878	9,810	8,478	8,224	7,014	6,624
'16 WD	9,214	9,506	9,918	11,432	12,296	12,696	12,386	12,664	11,676	11,898	10,824	10,194
'16 WE	5,980	6,674	6,822	8,222	9,210	11,124	8,834	8,812	8,632	8,282	7,190	6,368
'17 WD	9,626	9,954	10,090	10,958	11,794	12,324	11,694	11,824	11,688	12,068	10,650	9,992
'17 WE	6,274	6,886	6,696	7,944	8,616	9,106	8,584	8,344	8,384	9,472	6,960	6,698
'18 WD	9,334	9,686	9,650	10,666	13,730							
'18 WE	6,278	6,204	6,436	6,888	9,776							

Note: 'Weekday' defined as Monday-Friday, 'Weekend' defined as Saturday-Sunday

Weekday/Weekend Monthly Average Daily Traffic ('14-'18)



	May-14	May-15	May-16	May-17	May-18
Weekday	11,074	11,118	12,296	11,794	13,730
Weekend	8,298	8,438	9,210	8,616	9,776