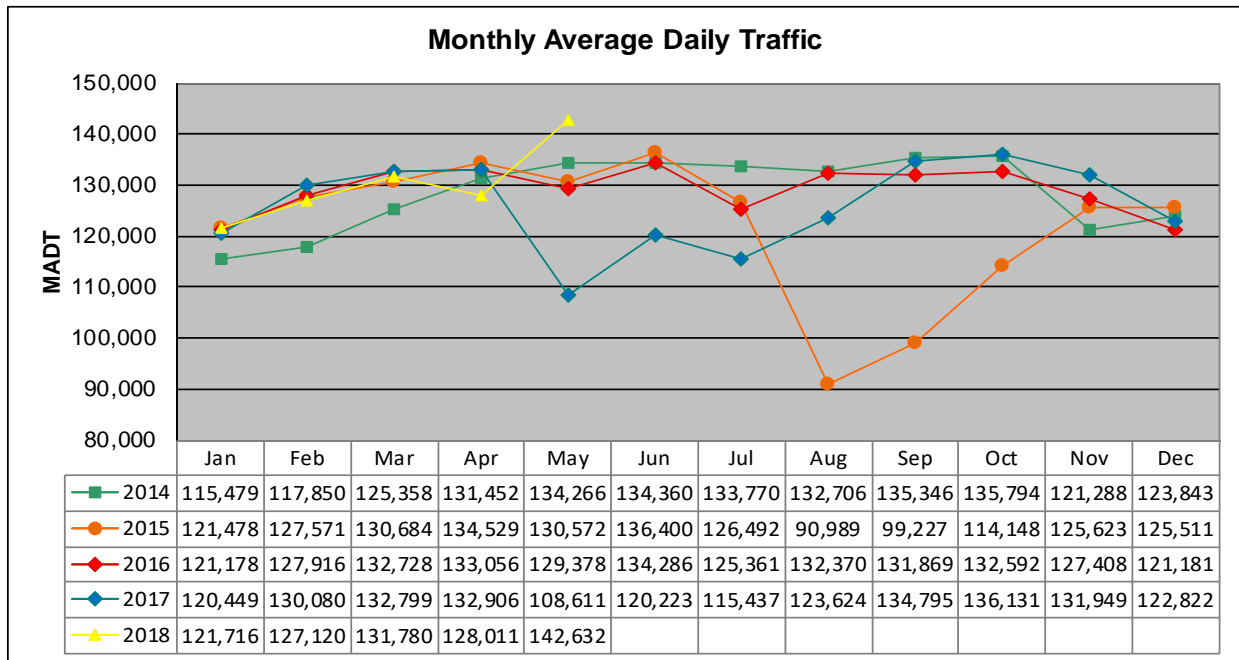


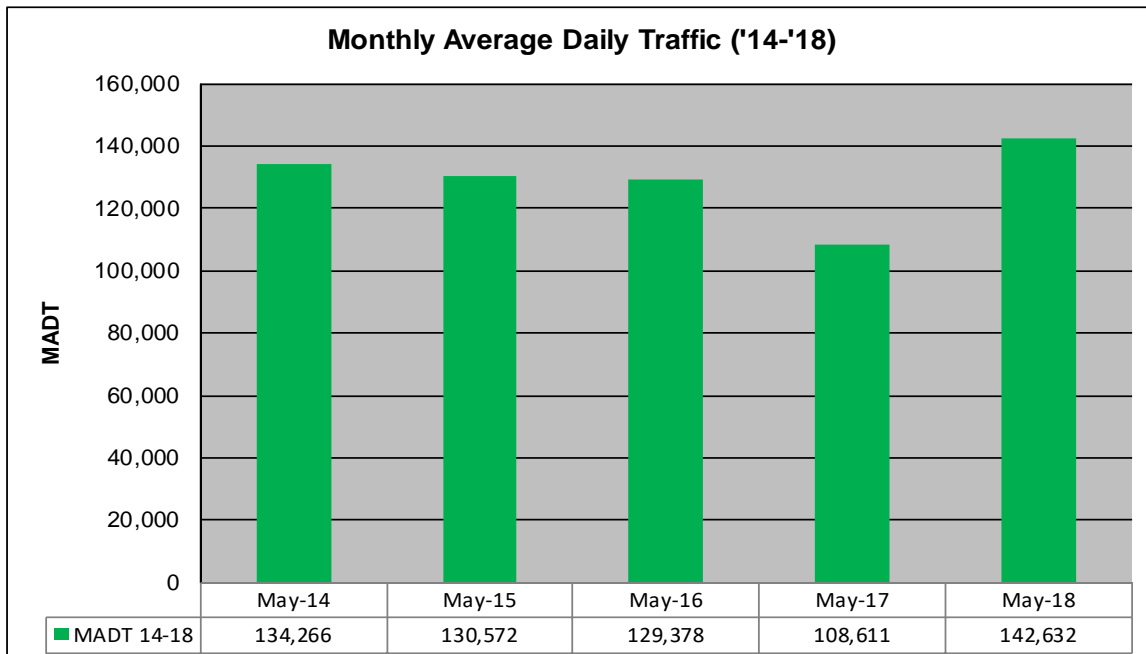
MONTHLY REPORT, STATION NO. 326 (ATR)

MAY 2018

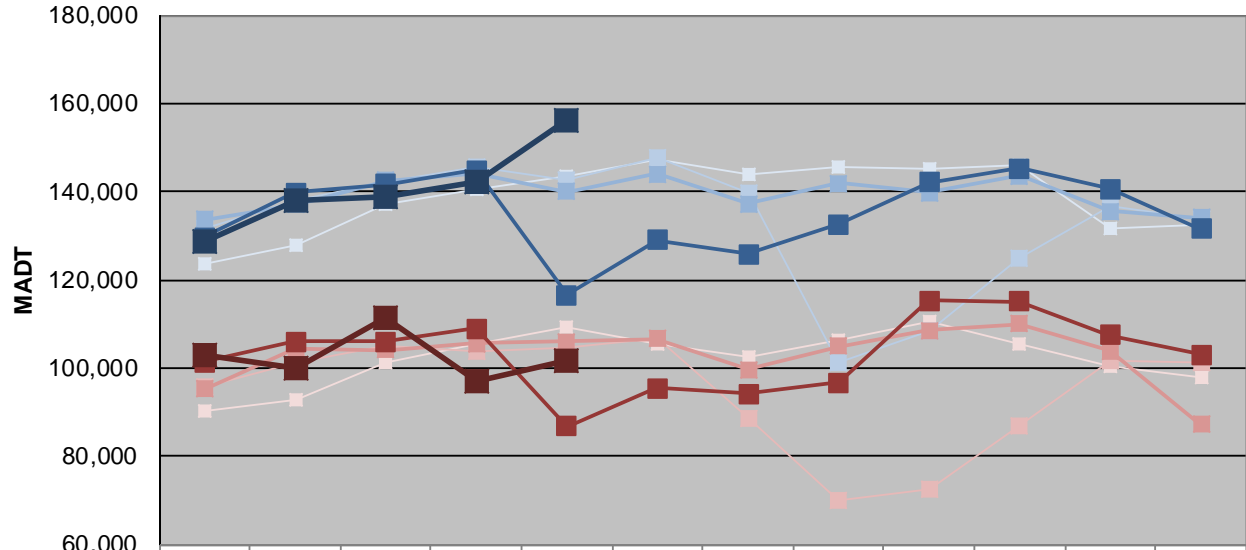
Station Measurement: VOLUME		
Route: I-394	Route Direction: E/W	Lanes: 6
County: Hennepin		Closest City: Minneapolis
Functional Class: Urban Principal Arterial - Interstate		
Location: E OF TH100 IN MINNEAPOLIS		
Ref Post: 007+00.250	True Mile: 7.25	Sequence No. 9850
Volume: 4,421,591		MADT: 142,632
Weekday (M-F) MADT: 156,088		Weekend (Sa-Su) MADT: 101,898



Note: Decrease in traffic July to October 2015 and May to August 2017 due to construction on I-394... Increase in traffic May 2018 due to detours



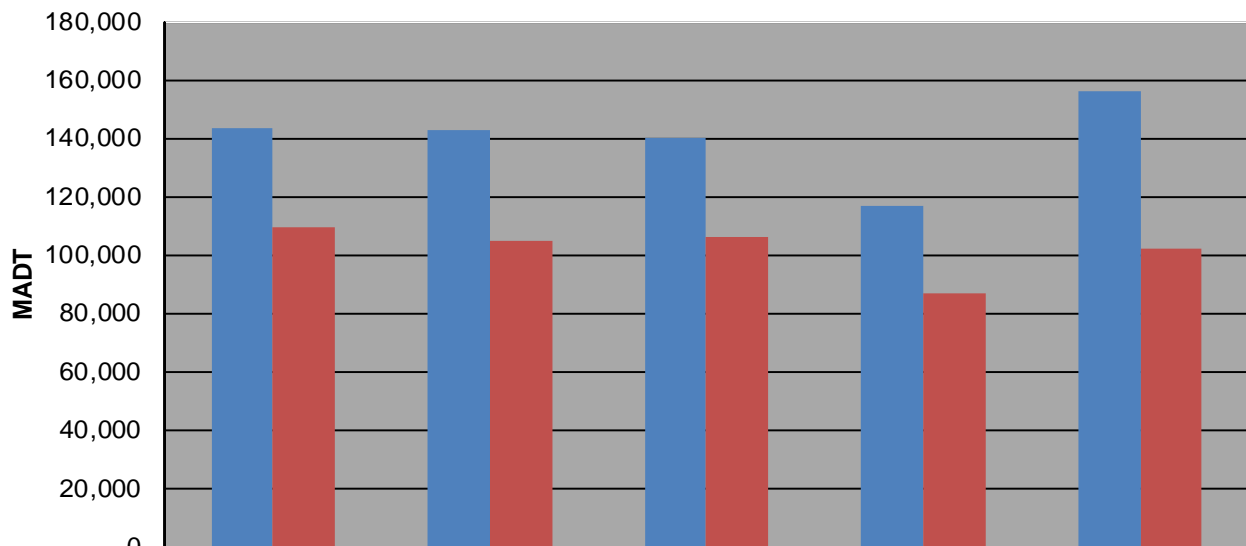
Weekday (WD)/Weekend (WE) Monthly Average Daily Traffic



	Jan	Feb	Mar	Apr	May	Jun	Jul	Aug	Sep	Oct	Nov	Dec
'14 WD	123,722	127,822	137,244	140,684	143,392	147,456	143,966	145,546	145,064	146,016	131,682	132,652
'14 WE	90,302	92,922	101,338	105,692	109,168	105,392	102,412	106,158	110,372	105,688	100,502	98,046
'15 WD	131,562	138,130	142,330	145,488	142,650	147,580	139,514	101,276	108,568	124,858	136,732	133,684
'15 WE	95,840	101,174	105,220	103,872	104,634	106,674	88,554	69,904	72,690	87,142	101,610	101,238
'16 WD	133,748	137,102	142,512	144,022	140,022	144,060	137,350	142,004	139,832	143,610	135,492	134,028
'16 WE	95,198	104,364	104,246	105,662	106,034	106,692	99,612	104,888	108,636	110,152	103,982	87,222
'17 WD	129,784	139,730	141,664	144,848	116,686	128,990	125,848	132,630	142,186	145,314	140,740	131,680
'17 WE	101,340	105,952	106,132	109,024	86,920	95,416	94,158	96,664	115,430	115,162	107,614	103,188
'18 WD	128,896	137,932	138,994	142,242	156,088							
'18 WE	102,920	100,092	111,422	96,944	101,898							

Note: 'Weekday' defined as Monday-Friday, 'Weekend' defined as Saturday-Sunday

Weekday/Weekend Monthly Average Daily Traffic ('14-'18)



	May-14	May-15	May-16	May-17	May-18
Weekday	143,392	142,650	140,022	116,686	156,088
Weekend	109,168	104,634	106,034	86,920	101,898