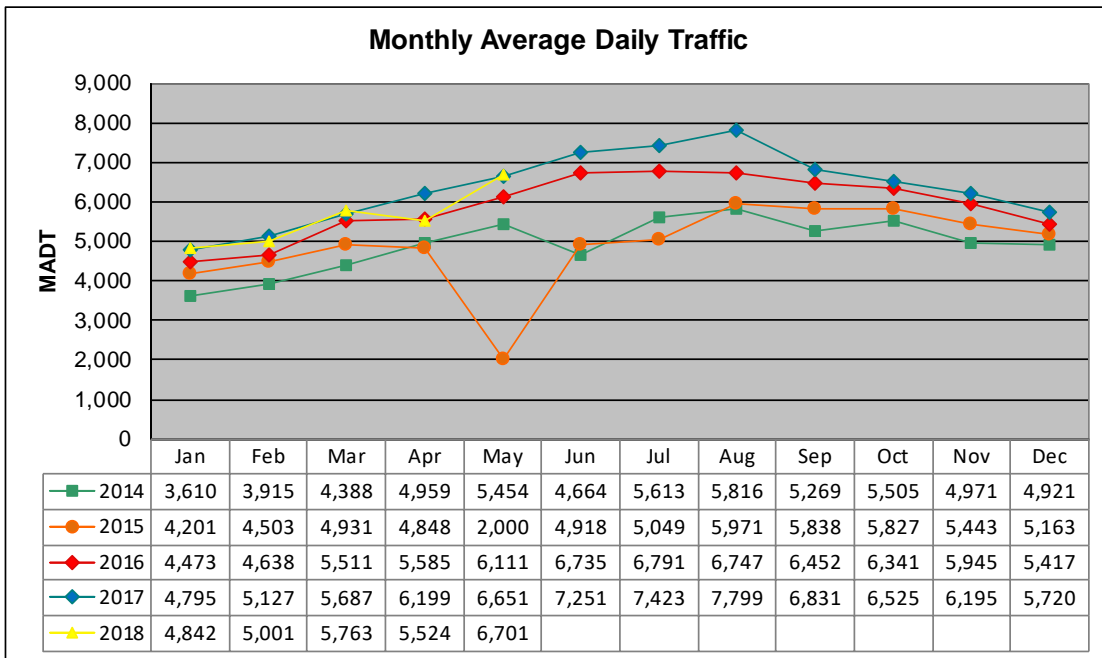


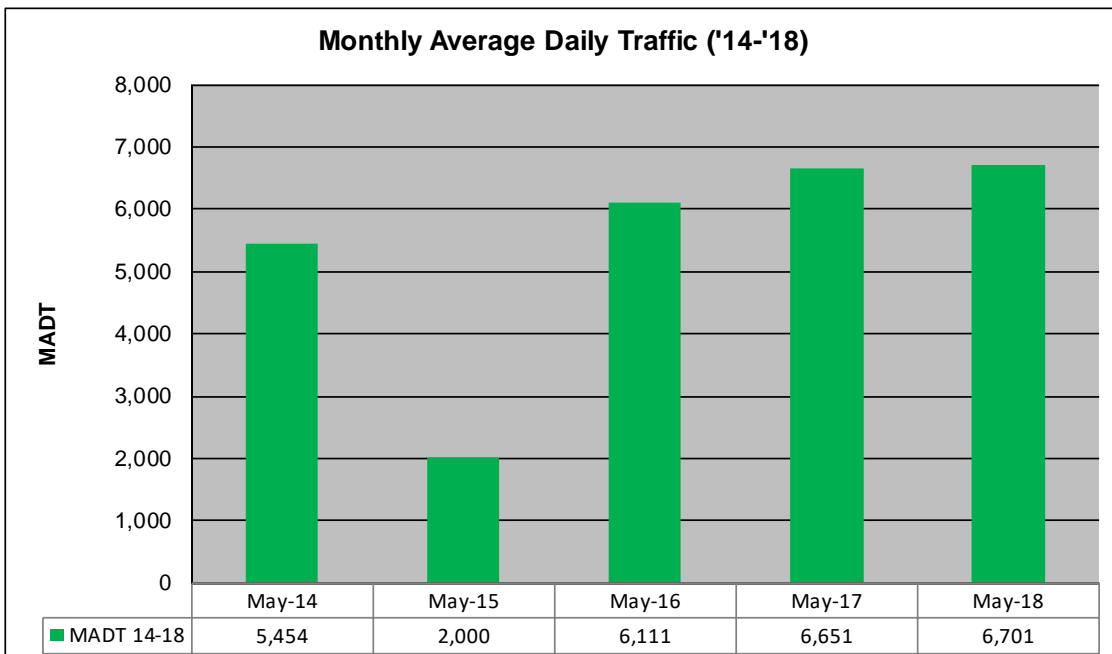
# MONTHLY REPORT, STATION NO. 27 (WIM)

## MAY 2018

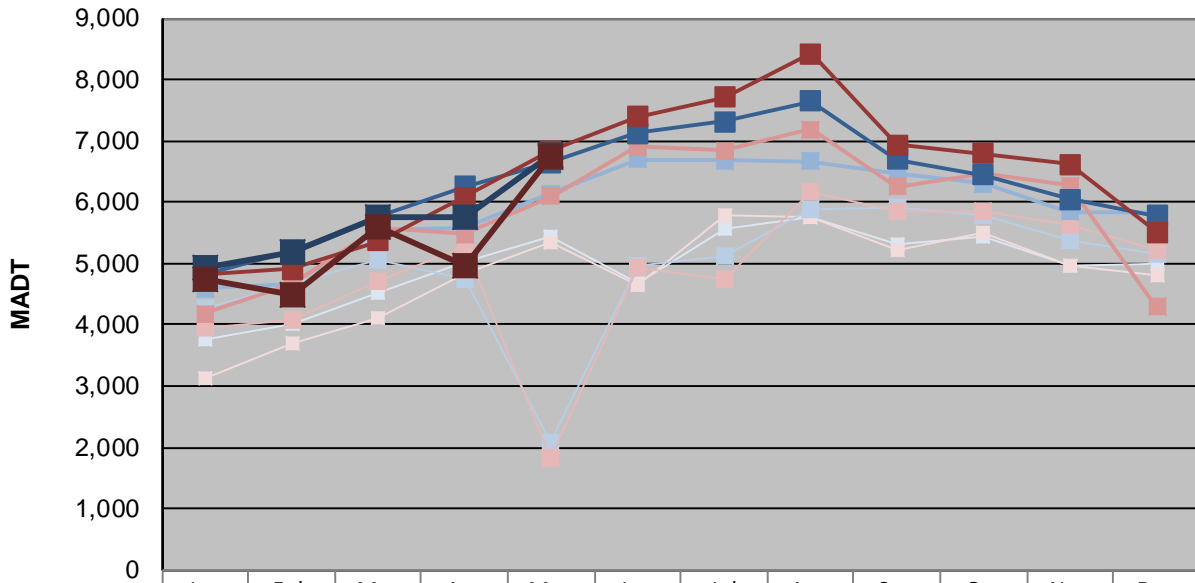
|  |                        |                                    |
|--|------------------------|------------------------------------|
| Station Measurement: VOLUME/SPEED/CLASS/WEIGHT     |                        |                                    |
| Route: TH 60                                       | Route Direction: E/W   | Lanes: 4                           |
| County: Watonwan                                   | Closest City: St James |                                    |
| Functional Class: Rural Principal Arterial - Other |                        |                                    |
| Location: .4 MI E OF 690TH AVE, SW OF ST JAMES     |                        |                                    |
| Ref Post: 064+00.108                               | True Mile: 64.203      | Sequence No. 9830                  |
| <b>Volume: 207,718</b>                             |                        | <b>MADT: 6,701</b>                 |
| <b>Weekday (M-F) MADT: 6,758</b>                   |                        | <b>Weekend (Sa-Su) MADT: 6,752</b> |



Note: Increase in traffic June/July 2016 due to detour... Decrease in traffic June/July 2014 and May to July 2015 due to construction... Volume data reported as ATR 197 during 2014



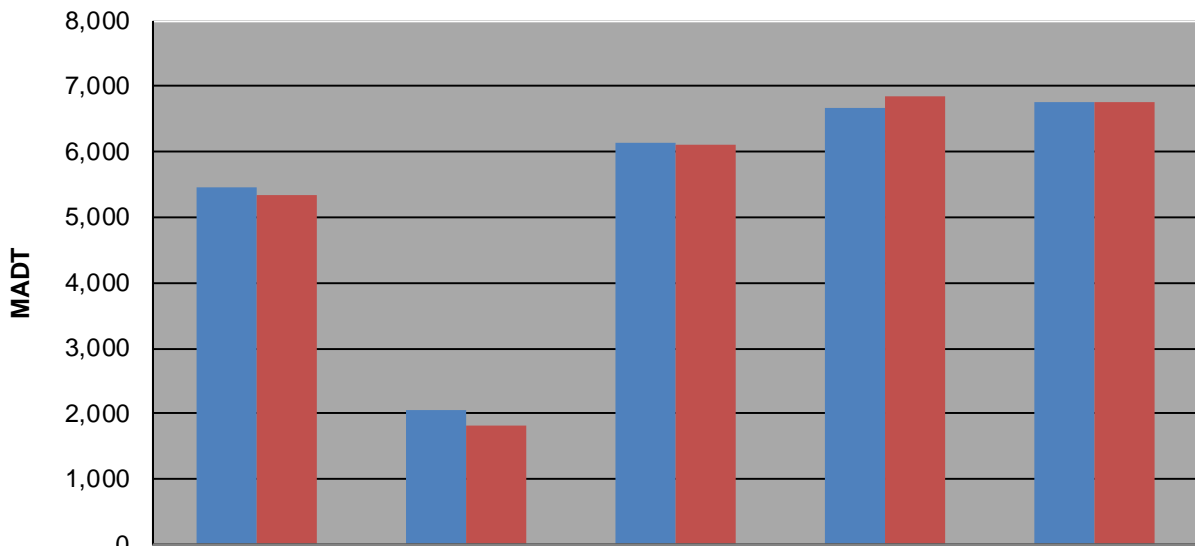
### Weekday (WD)/Weekend (WE) Monthly Average Daily Traffic



|        | Jan   | Feb   | Mar   | Apr   | May   | Jun   | Jul   | Aug   | Sep   | Oct   | Nov   | Dec   |
|--------|-------|-------|-------|-------|-------|-------|-------|-------|-------|-------|-------|-------|
| '14 WD | 3,752 | 4,002 | 4,530 | 5,040 | 5,444 | 4,668 | 5,570 | 5,766 | 5,316 | 5,426 | 4,968 | 4,994 |
| '14 WE | 3,116 | 3,696 | 4,110 | 4,840 | 5,352 | 4,660 | 5,792 | 5,772 | 5,212 | 5,516 | 4,978 | 4,822 |
| '15 WD | 4,268 | 4,670 | 5,058 | 4,728 | 2,070 | 4,958 | 5,120 | 5,896 | 5,900 | 5,786 | 5,384 | 5,164 |
| '15 WE | 3,948 | 4,084 | 4,722 | 5,272 | 1,822 | 4,926 | 4,740 | 6,168 | 5,838 | 5,836 | 5,640 | 5,226 |
| '16 WD | 4,588 | 4,656 | 5,544 | 5,578 | 6,148 | 6,694 | 6,688 | 6,666 | 6,456 | 6,296 | 5,850 | 5,828 |
| '16 WE | 4,180 | 4,662 | 5,578 | 5,482 | 6,100 | 6,912 | 6,842 | 7,182 | 6,260 | 6,482 | 6,264 | 4,290 |
| '17 WD | 4,820 | 5,216 | 5,758 | 6,260 | 6,658 | 7,120 | 7,310 | 7,654 | 6,704 | 6,446 | 6,046 | 5,774 |
| '17 WE | 4,820 | 4,906 | 5,370 | 6,080 | 6,848 | 7,394 | 7,706 | 8,420 | 6,932 | 6,786 | 6,612 | 5,504 |
| '18 WD | 4,926 | 5,202 | 5,760 | 5,748 | 6,758 |       |       |       |       |       |       |       |
| '18 WE | 4,748 | 4,500 | 5,588 | 4,958 | 6,752 |       |       |       |       |       |       |       |

Note: 'Weekday' defined as Monday-Friday, 'Weekend' defined as Saturday-Sunday

### Weekday/Weekend Monthly Average Daily Traffic ('14-'18)



|         | May-14 | May-15 | May-16 | May-17 | May-18 |
|---------|--------|--------|--------|--------|--------|
| Weekday | 5,444  | 2,070  | 6,148  | 6,658  | 6,758  |
| Weekend | 5,352  | 1,822  | 6,100  | 6,848  | 6,752  |