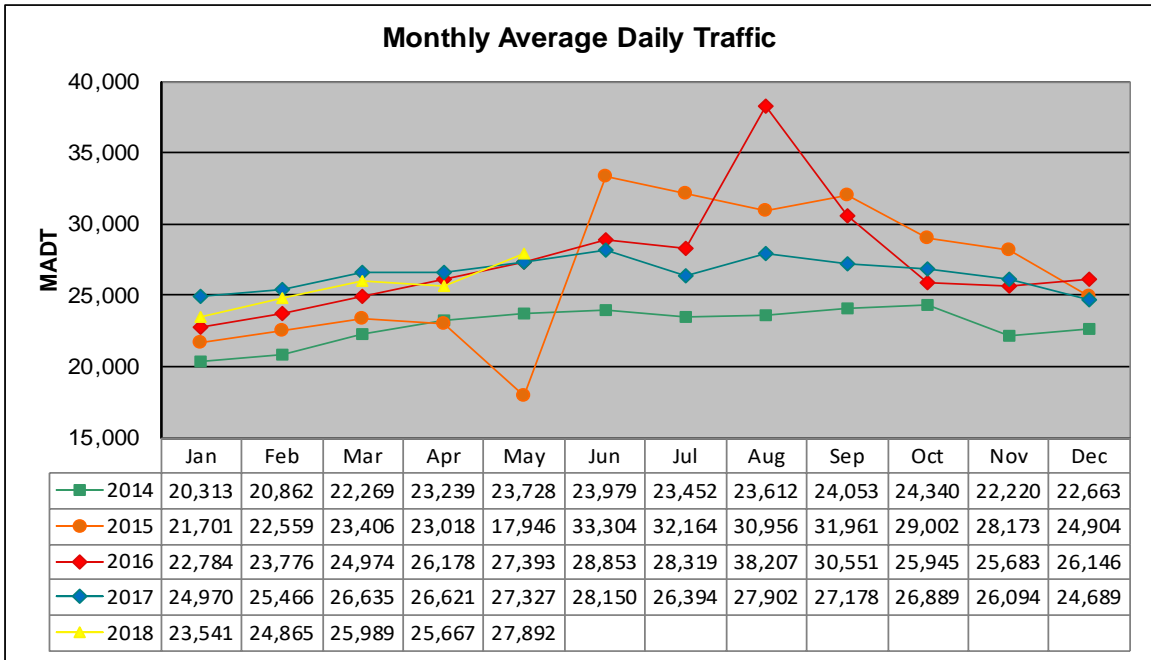


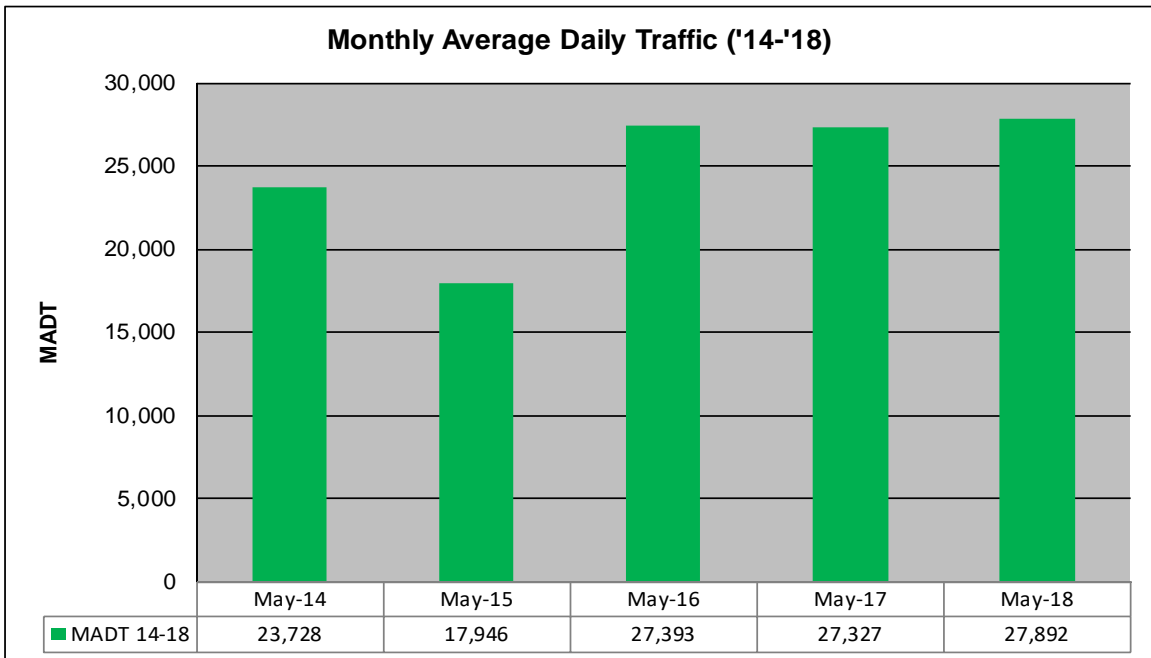
# MONTHLY REPORT, STATION NO. 212 (ATR)

## MAY 2018

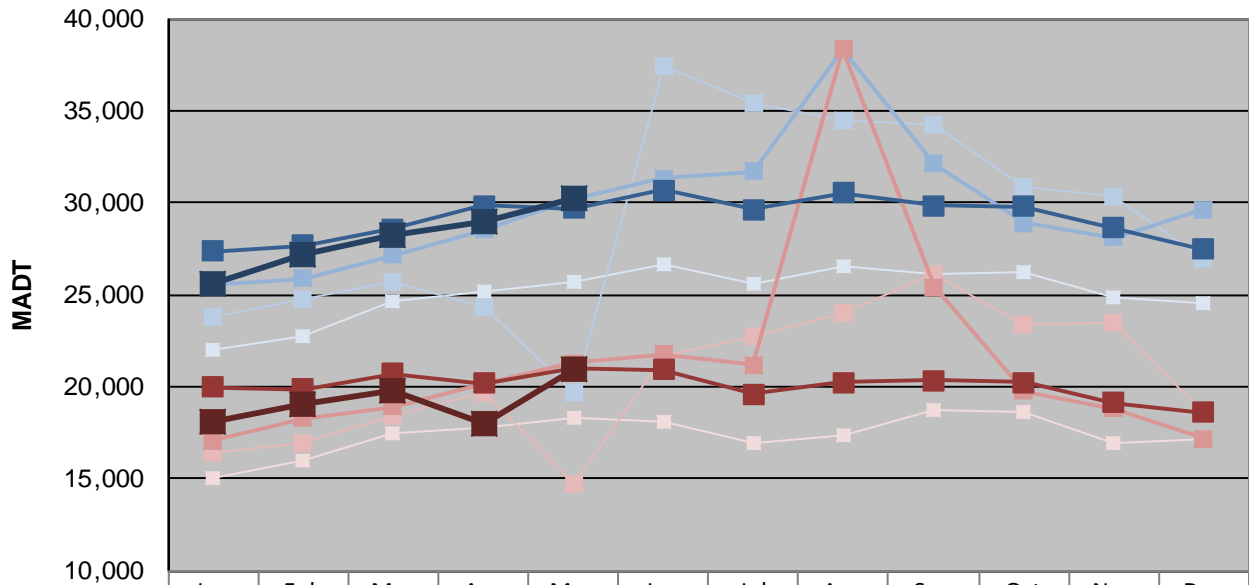
Station Measurement: VOLUME/SPEED/CLASS		
Route: TH 14	Route Direction: E/W	Lanes: 6
County: Olmsted	Closest City: Rochester	
Functional Class: Urban Other Principal Arterial		
Location: E OF CR104 (60TH AVE NW), W OF ROCHESTER		
Ref Post: 207+00.260	True Mile: 209.205	Sequence No. 6755
<b>Volume: 864,638</b>		<b>MADT: 27,892</b>
<b>Weekday (M-F) MADT: 30,230</b>		<b>Weekend (Sa-Su) MADT: 20,950</b>



Note: Decrease in traffic May 2015 due to construction on TH 14... Increase in traffic June to December 2015 and April to September 2016 due to detours



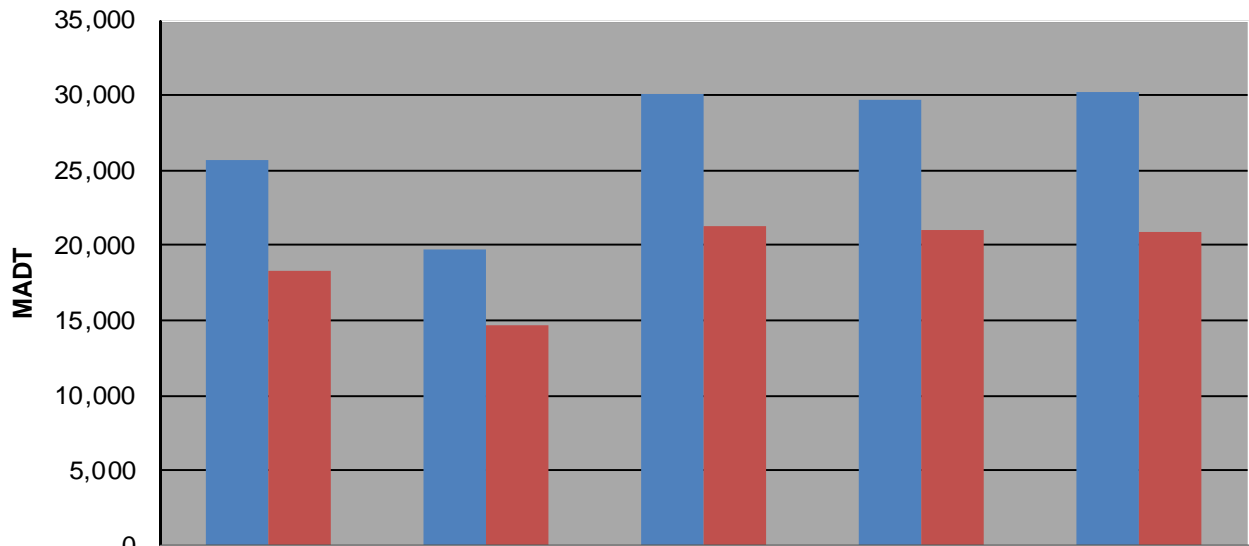
### Weekday (WD)/Weekend (WE) Monthly Average Daily Traffic



	Jan	Feb	Mar	Apr	May	Jun	Jul	Aug	Sep	Oct	Nov	Dec
'14 WD	22,038	22,802	24,608	25,224	25,754	26,604	25,628	26,530	26,138	26,284	24,842	24,544
'14 WE	15,052	16,012	17,460	17,824	18,282	18,124	16,928	17,414	18,700	18,602	16,978	17,200
'15 WD	23,794	24,796	25,682	24,332	19,694	37,406	35,364	34,444	34,214	30,904	30,344	26,932
'15 WE	16,408	16,970	18,384	19,664	14,678	21,698	22,712	23,974	26,112	23,412	23,454	18,678
'16 WD	25,550	25,890	27,162	28,544	30,148	31,350	31,684	38,326	32,132	28,876	28,116	29,622
'16 WE	17,062	18,298	18,940	20,136	21,306	21,750	21,188	38,368	25,406	19,776	18,806	17,158
'17 WD	27,384	27,696	28,588	29,834	29,668	30,716	29,626	30,534	29,866	29,786	28,644	27,494
'17 WE	19,984	19,892	20,728	20,196	21,030	20,928	19,612	20,254	20,356	20,266	19,154	18,584
'18 WD	25,560	27,200	28,280	29,028	30,230							
'18 WE	18,062	19,028	19,844	18,046	20,950							

Note: 'Weekday' defined as Monday-Friday, 'Weekend' defined as Saturday-Sunday

### Weekday/Weekend Monthly Average Daily Traffic ('14-'18)



	May-14	May-15	May-16	May-17	May-18
Weekday	25,754	19,694	30,148	29,668	30,230
Weekend	18,282	14,678	21,306	21,030	20,950