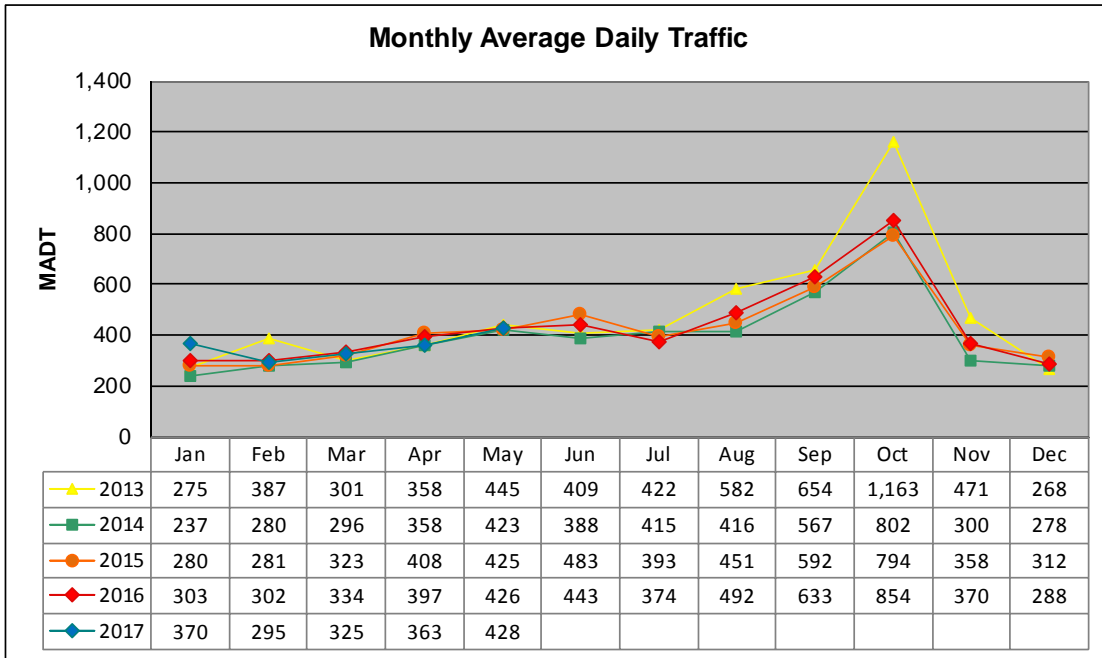


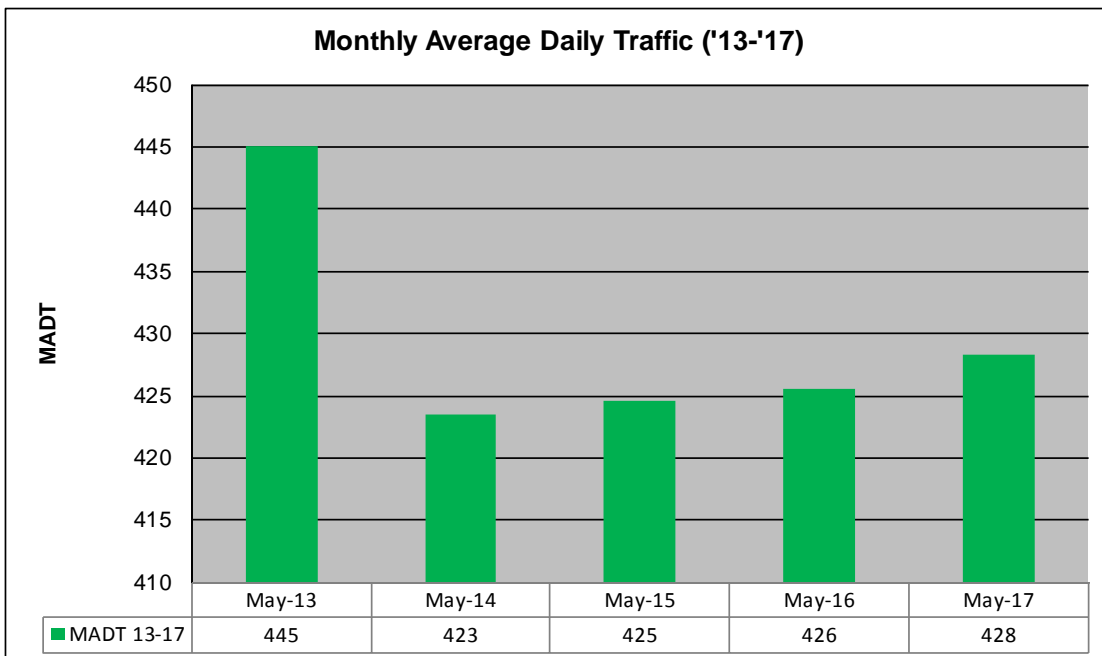
# MONTHLY REPORT, STATION NO. 41 (WIM)

## MAY 2017

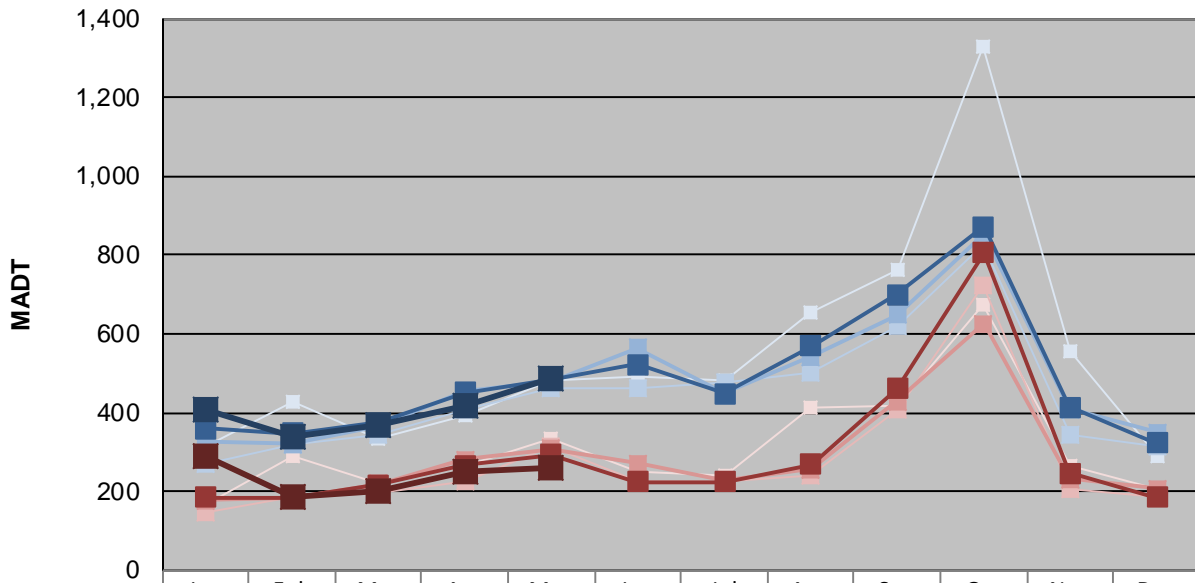
Station Measurement: VOLUME/SPEED/CLASS/WEIGHT		
Route: CSAH 14	Route Direction: N/S	Lanes: 2
County: Polk	Closest City: Crookston	
Functional Class: Rural Major Collector		
Location: 1.3 MI N OF CSAH45, S OF CROOKSTON		
Ref Post: 014+00.850	True Mile: 14.85	Sequence No. 9817
<b>Volume: 13,276</b>		<b>MADT: 428</b>
<b>Weekday (M-F) MADT: 488</b>		<b>Weekend (Sa-Su) MADT: 262</b>



Note: Increase in traffic during Octobers due to beet harvesting



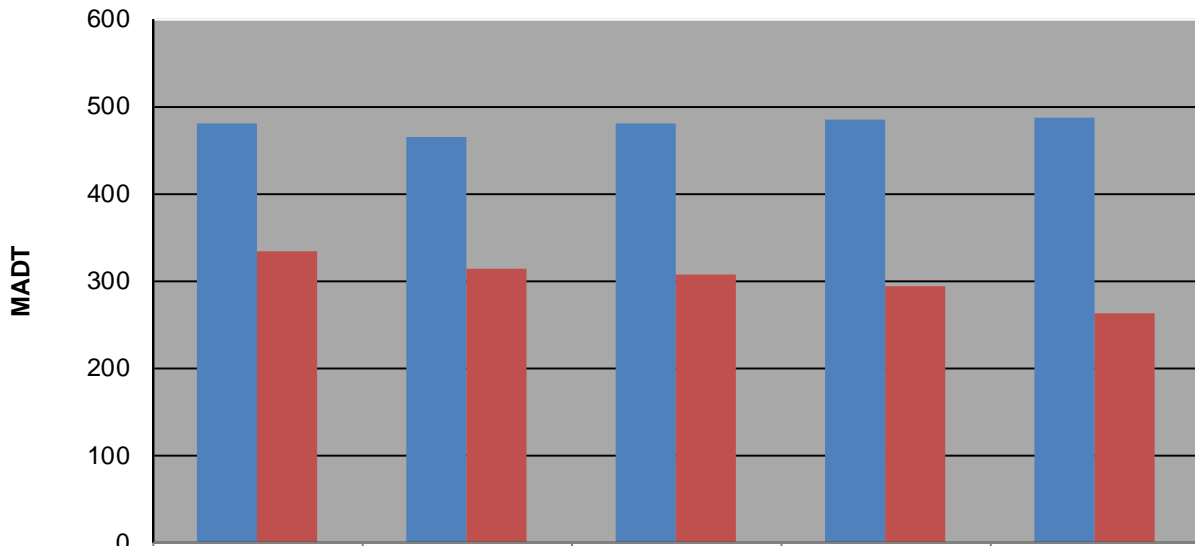
### Weekday (WD)/Weekend (WE) Monthly Average Daily Traffic



	Jan	Feb	Mar	Apr	May	Jun	Jul	Aug	Sep	Oct	Nov	Dec
'13 WD	312	426	336	392	480	490	482	652	764	1,330	558	292
'13 WE	166	290	222	264	334	250	238	412	416	674	266	208
'14 WD	270	320	346	408	464	460	478	502	622	828	346	312
'14 WE	148	184	196	224	314	224	228	238	408	722	208	188
'15 WD	326	320	368	454	480	564	452	542	648	854	410	350
'15 WE	178	184	220	280	308	270	226	256	430	626	232	206
'16 WD	360	348	374	450	484	522	448	568	700	872	414	324
'16 WE	186	184	216	266	294	224	224	268	460	806	246	186
'17 WD	410	340	370	420	488							
'17 WE	288	184	202	250	262							

Note: 'Weekday' defined as Monday-Friday, 'Weekend' defined as Saturday-Sunday

### Weekday/Weekend Monthly Average Daily Traffic ('13-'17)



	May-13	May-14	May-15	May-16	May-17
Weekday	480	464	480	484	488
Weekend	334	314	308	294	262