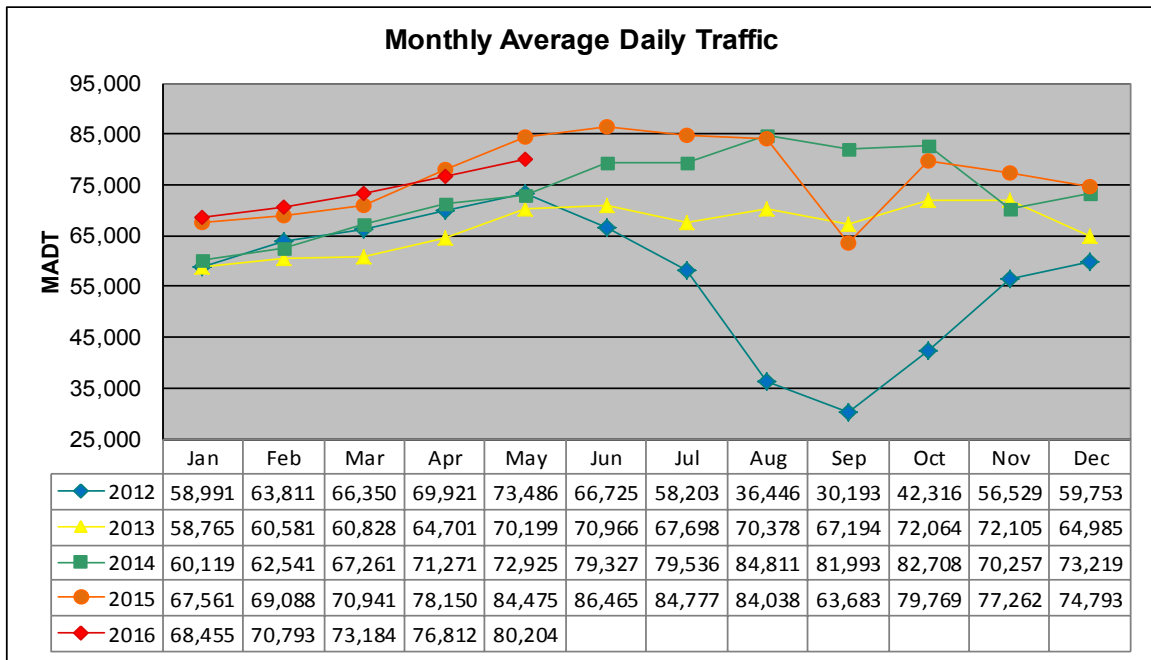


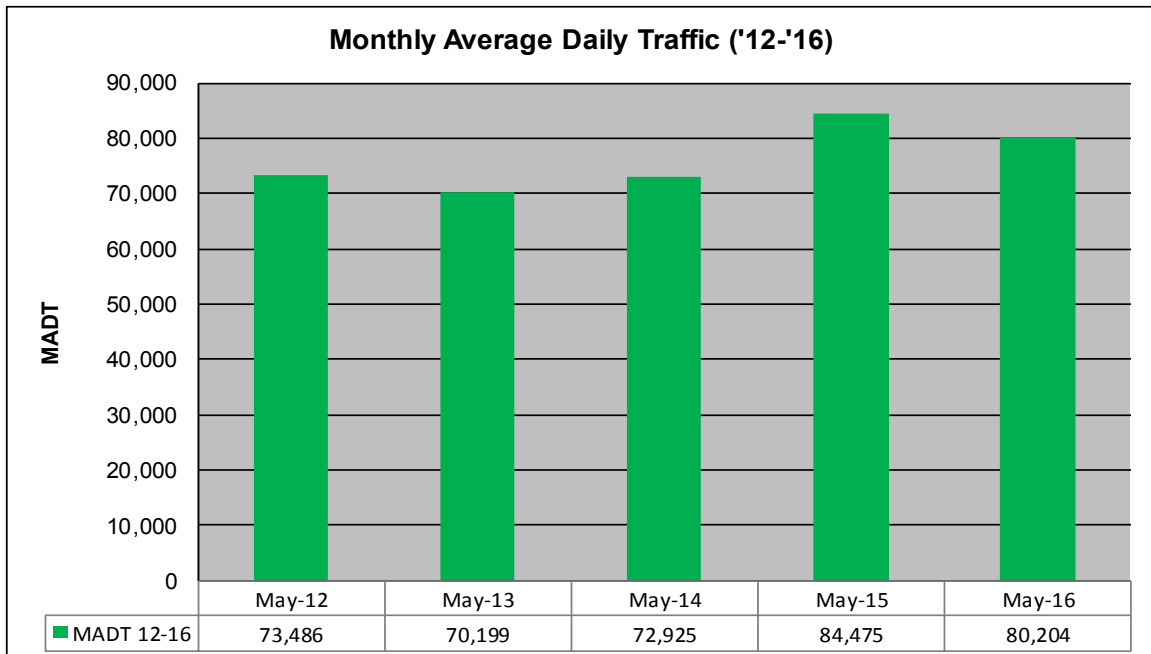
MONTHLY REPORT, STATION NO. 341 (ATR)

MAY 2016

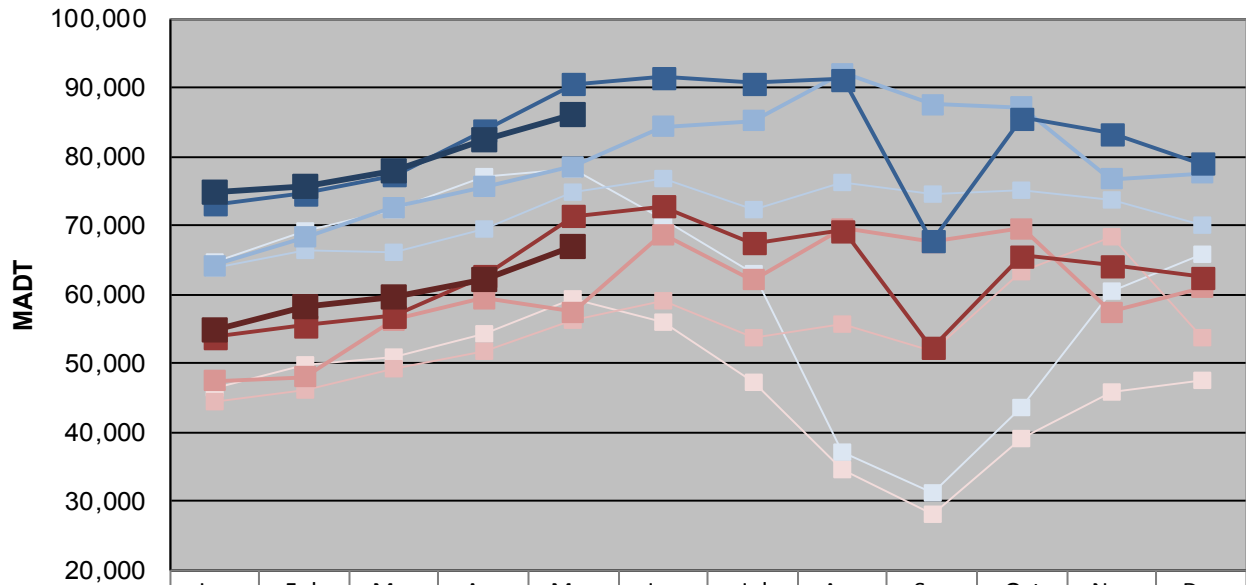
| | | |
|---|----------------------|-------------------------------------|
| Station Measurement: VOLUME/SPEED/CLASS | | |
| Route: I-694 | Route Direction: N/S | Lanes: 4 |
| County: Washington | | Closest City: Oakdale |
| Functional Class: Urban Principal Arterial - Interstate | | |
| Location: S OF CSAH35 (50TH ST N) IN OAKDALE | | |
| Ref Post: 053+00.290 | True Mile: 53.237 | Sequence No. 9858 |
| Volume: 2,486,335 | | MADT: 80,204 |
| Weekday (M-F) MADT: 86,174 | | Weekend (Sa-Su) MADT: 66,996 |



Note: Decrease in traffic June to November 2012 due to construction on I-694... Increase in traffic November 2013, June to October 2014, and May/July/August/October 2015 due to detour from TH 36



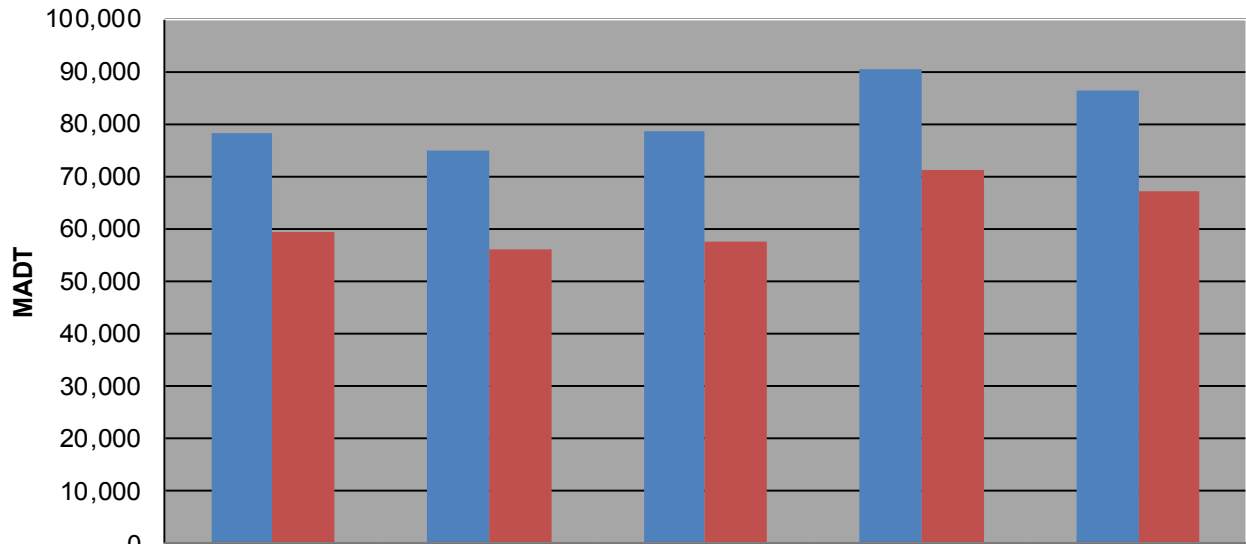
Weekday (WD)/Weekend (WE) Monthly Average Daily Traffic



| | Jan | Feb | Mar | Apr | May | Jun | Jul | Aug | Sep | Oct | Nov | Dec |
|--------|--------|--------|--------|--------|--------|--------|--------|--------|--------|--------|--------|--------|
| '12 WD | 64,720 | 69,226 | 72,212 | 76,948 | 78,236 | 70,970 | 63,038 | 37,082 | 31,172 | 43,600 | 60,534 | 65,866 |
| '12 WE | 46,454 | 49,880 | 50,964 | 54,296 | 59,280 | 56,046 | 47,126 | 34,640 | 28,238 | 39,106 | 45,740 | 47,664 |
| '13 WD | 63,860 | 66,354 | 66,070 | 69,398 | 74,746 | 76,882 | 72,436 | 76,284 | 74,412 | 75,250 | 73,664 | 70,182 |
| '13 WE | 44,382 | 46,146 | 49,352 | 51,722 | 56,156 | 59,138 | 53,582 | 55,562 | 51,668 | 63,272 | 68,408 | 53,720 |
| '14 WD | 64,214 | 68,354 | 72,636 | 75,598 | 78,628 | 84,274 | 85,226 | 92,014 | 87,620 | 87,094 | 76,676 | 77,582 |
| '14 WE | 47,458 | 48,006 | 56,300 | 59,390 | 57,494 | 68,692 | 62,098 | 69,502 | 67,518 | 69,556 | 57,420 | 60,972 |
| '15 WD | 73,020 | 74,556 | 77,256 | 83,746 | 90,514 | 91,538 | 90,672 | 91,244 | 67,726 | 85,606 | 83,410 | 79,050 |
| '15 WE | 53,832 | 55,416 | 56,890 | 62,694 | 71,362 | 72,802 | 67,476 | 69,208 | 52,288 | 65,564 | 64,174 | 62,518 |
| '16 WD | 74,940 | 75,714 | 77,918 | 82,550 | 86,174 | | | | | | | |
| '16 WE | 54,950 | 58,186 | 59,722 | 62,198 | 66,996 | | | | | | | |

Note: 'Weekday' defined as Monday-Friday, 'Weekend' defined as Saturday-Sunday

Weekday/Weekend Monthly Average Daily Traffic ('12-'16)



| | May-12 | May-13 | May-14 | May-15 | May-16 |
|---------|--------|--------|--------|--------|--------|
| Weekday | 78,236 | 74,746 | 78,628 | 90,514 | 86,174 |
| Weekend | 59,280 | 56,156 | 57,494 | 71,362 | 66,996 |