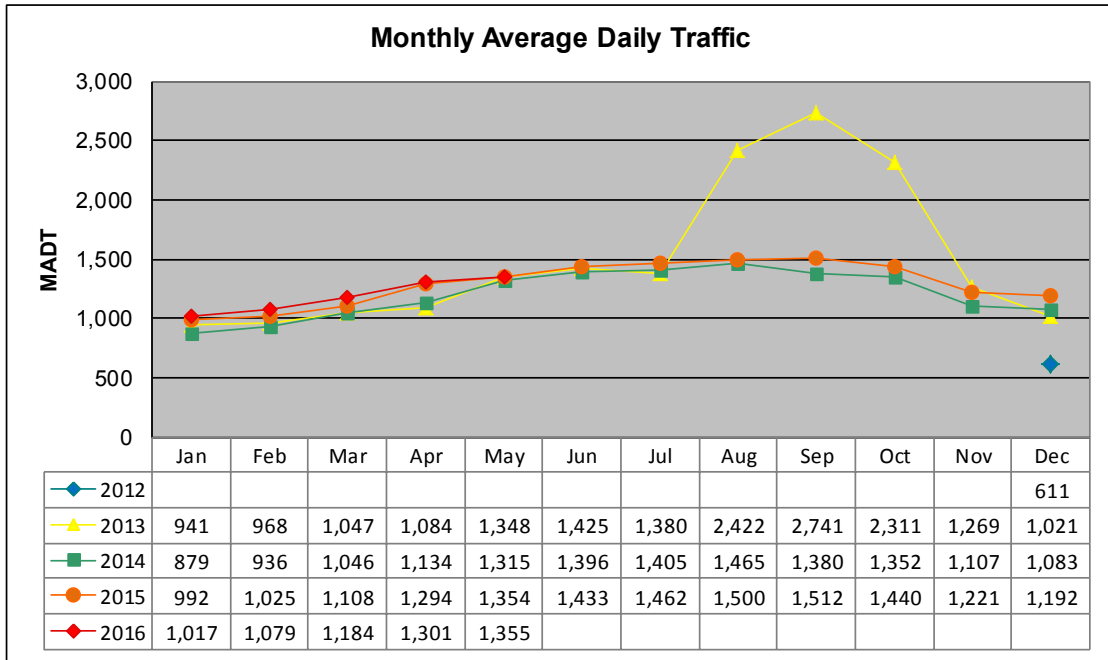


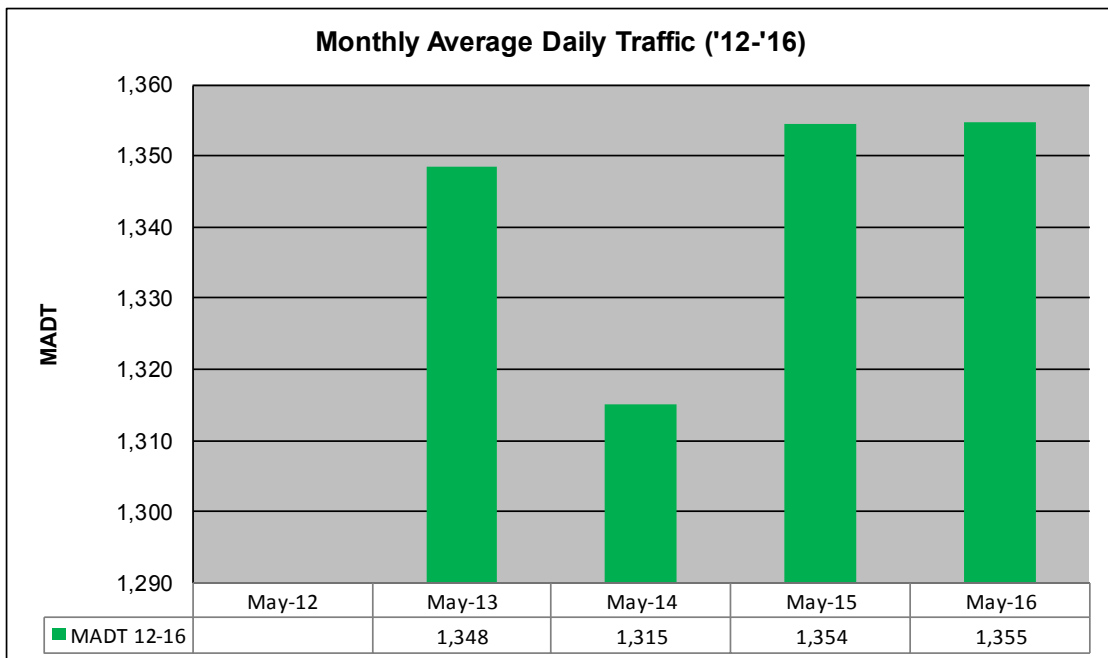
# MONTHLY REPORT, STATION NO. 233 (ATR)

## MAY 2016

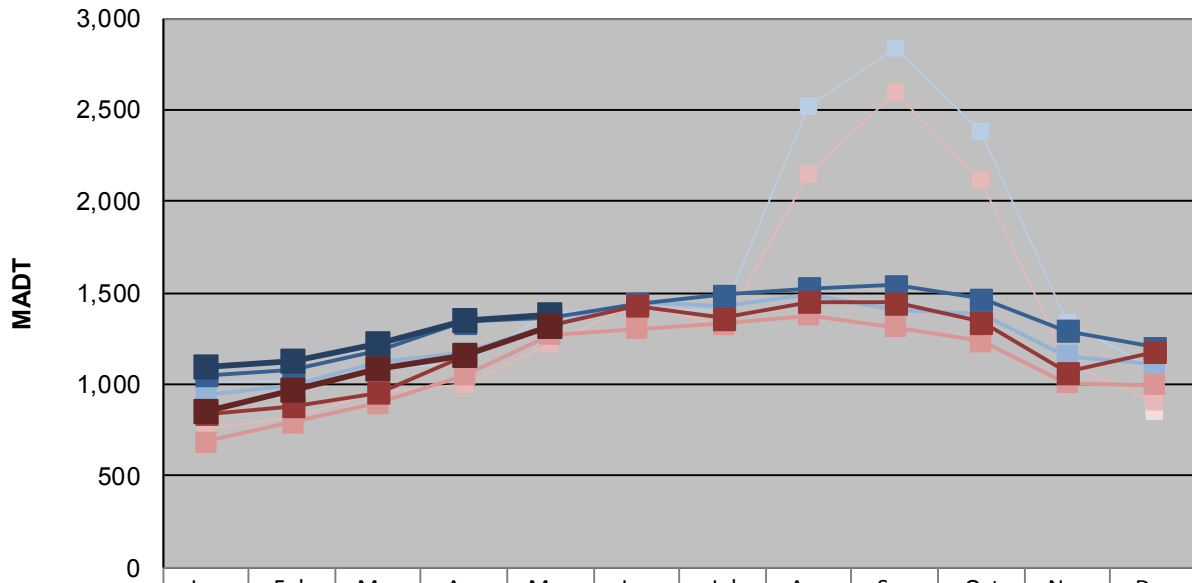
|   |                         |                                    |
|---|-------------------------|------------------------------------|
| Station Measurement: VOLUME/SPEED/CLASS       |                         |                                    |
| Route: CSAH 9                                 | Route Direction: N/S    | Lanes: 2                           |
| County: Sibley                                | Closest City: Arlington |                                    |
| Functional Class: Rural Major Collector       |                         |                                    |
| Location: .7 MI N OF 226TH ST, N OF ARLINGTON |                         |                                    |
| Ref Post: 014+00.025                          | True Mile: 14.025       | Sequence No. 22510                 |
| <b>Volume: 41,994</b>                         |                         | <b>MADT: 1,355</b>                 |
| <b>Weekday (M-F) MADT: 1,384</b>              |                         | <b>Weekend (Sa-Su) MADT: 1,318</b> |



Note: Began collecting data December 2012... Increase in traffic August to October 2013 due to detour from TH 5



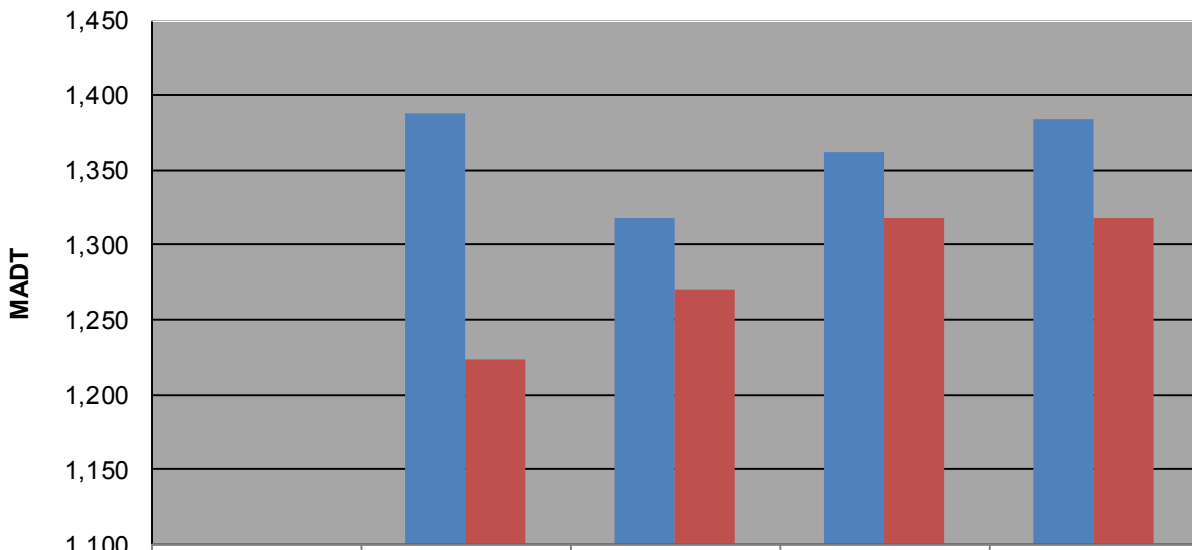
### Weekday (WD)/Weekend (WE) Monthly Average Daily Traffic



|        | Jan   | Feb   | Mar   | Apr   | May   | Jun   | Jul   | Aug   | Sep   | Oct   | Nov   | Dec   |
|--------|-------|-------|-------|-------|-------|-------|-------|-------|-------|-------|-------|-------|
| '12 WD |       |       |       |       |       |       |       |       |       |       |       | 872   |
| '12 WE |       |       |       |       |       |       |       |       |       |       |       | 854   |
| '13 WD | 1,010 | 1,026 | 1,080 | 1,116 | 1,388 | 1,416 | 1,402 | 2,516 | 2,832 | 2,388 | 1,334 | 1,080 |
| '13 WE | 756   | 826   | 958   | 1,000 | 1,224 | 1,444 | 1,314 | 2,156 | 2,590 | 2,120 | 1,112 | 902   |
| '14 WD | 940   | 994   | 1,118 | 1,170 | 1,318 | 1,444 | 1,426 | 1,496 | 1,412 | 1,386 | 1,158 | 1,116 |
| '14 WE | 684   | 792   | 898   | 1,050 | 1,270 | 1,304 | 1,330 | 1,376 | 1,316 | 1,236 | 1,008 | 996   |
| '15 WD | 1,050 | 1,084 | 1,182 | 1,340 | 1,362 | 1,442 | 1,488 | 1,528 | 1,544 | 1,470 | 1,294 | 1,202 |
| '15 WE | 842   | 882   | 956   | 1,158 | 1,318 | 1,430 | 1,364 | 1,452 | 1,444 | 1,342 | 1,064 | 1,176 |
| '16 WD | 1,096 | 1,126 | 1,220 | 1,352 | 1,384 |       |       |       |       |       |       |       |
| '16 WE | 848   | 966   | 1,088 | 1,158 | 1,318 |       |       |       |       |       |       |       |

Note: 'Weekday' defined as Monday-Friday, 'Weekend' defined as Saturday-Sunday

### Weekday/Weekend Monthly Average Daily Traffic ('12-'16)



|         | May-12 | May-13 | May-14 | May-15 | May-16 |
|---------|--------|--------|--------|--------|--------|
| Weekday |        | 1,388  | 1,318  | 1,362  | 1,384  |
| Weekend |        | 1,224  | 1,270  | 1,318  | 1,318  |