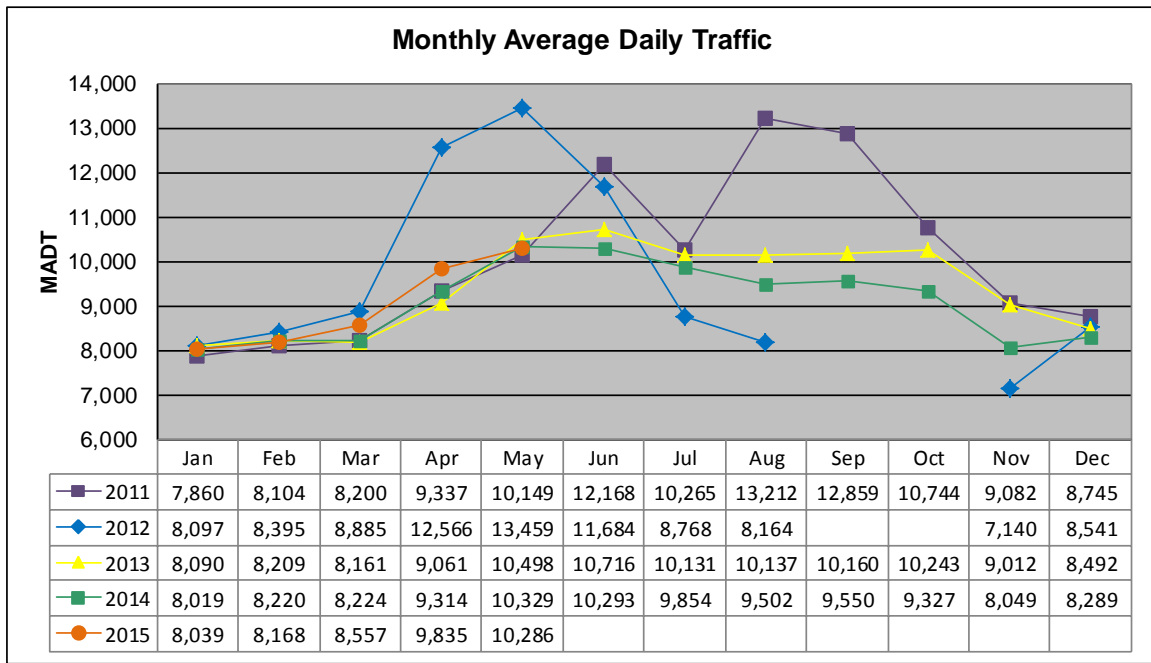


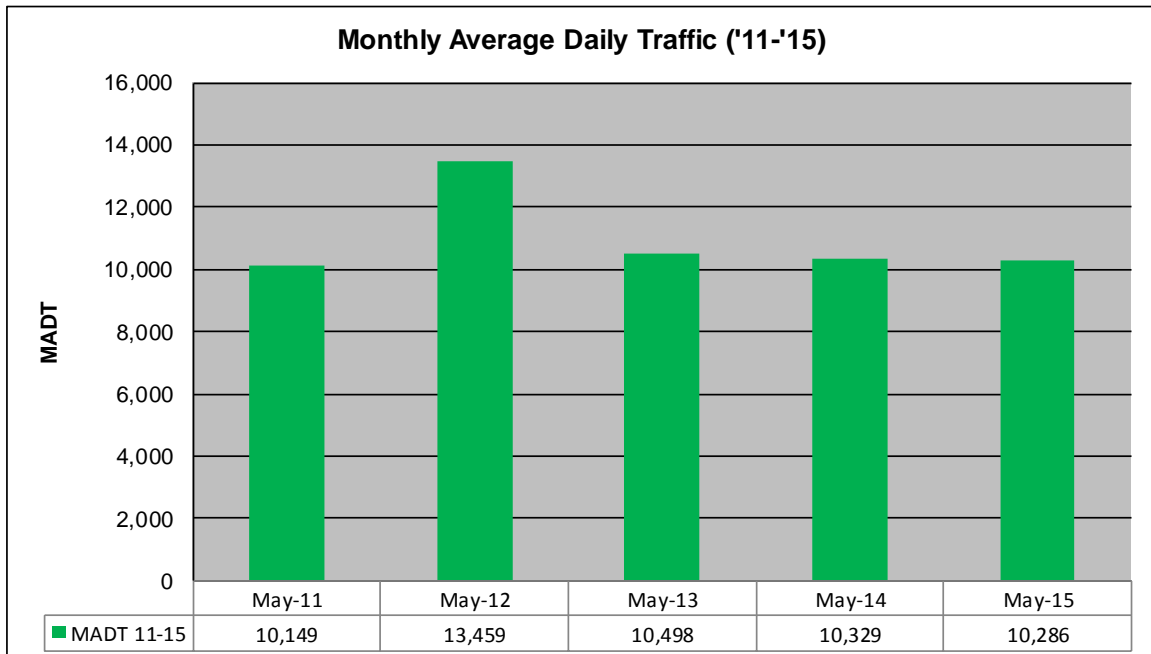
# MONTHLY REPORT, STATION NO. 390 (ATR)

## MAY 2015

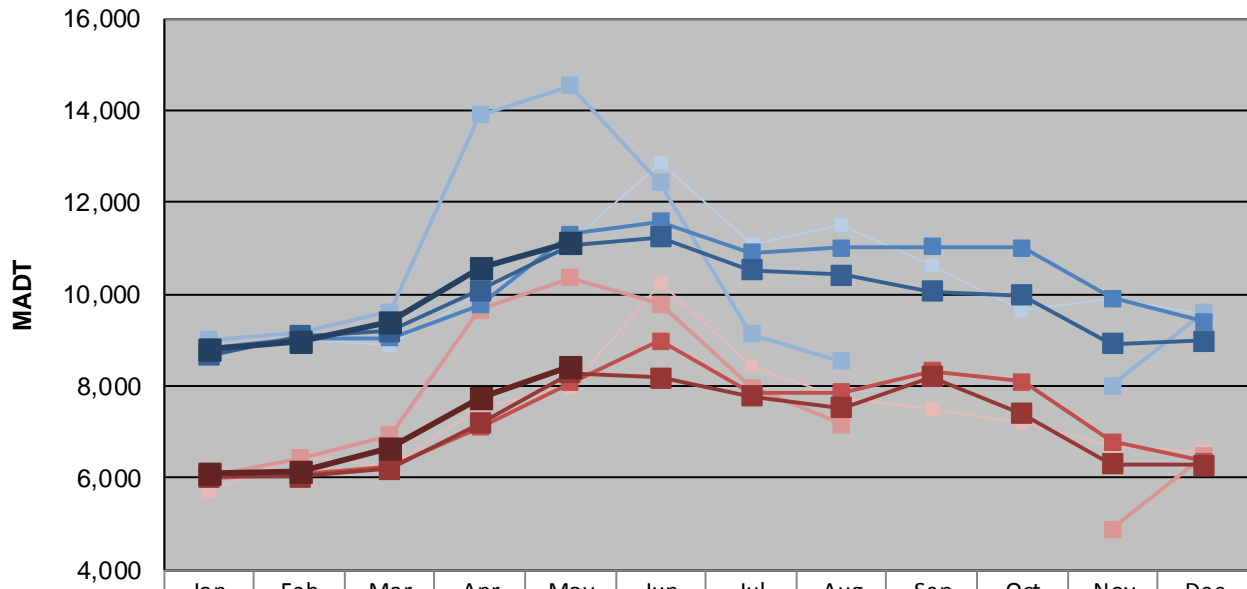
Station Measurement: VOLUME/SPEED/CLASS		
Route: TH 61	Route Direction: N/S	Lanes: 2
County: Washington		Closest City: Hugo
Functional Class: Urban Minor Arterial		
Location: .9 MI N OF CSAH8 IN HUGO		
Ref Post: 153+00.300	True Mile: 153.097	Sequence No. 9878
<b>Volume: 318,855</b>		<b>MADT: 10,286</b>
<b>Weekday (M-F) MADT: 11,118</b>		<b>Weekend (Sa-Su) MADT: 8,438</b>



Note: Increase in traffic Jun/Aug/Sep '11 and Apr/May '12 due to detour from I-35E... Decrease in traffic Jul/Aug/Nov '12 due to construction on TH 61... No data Sep/Oct '12 due to sensors destroyed by construction



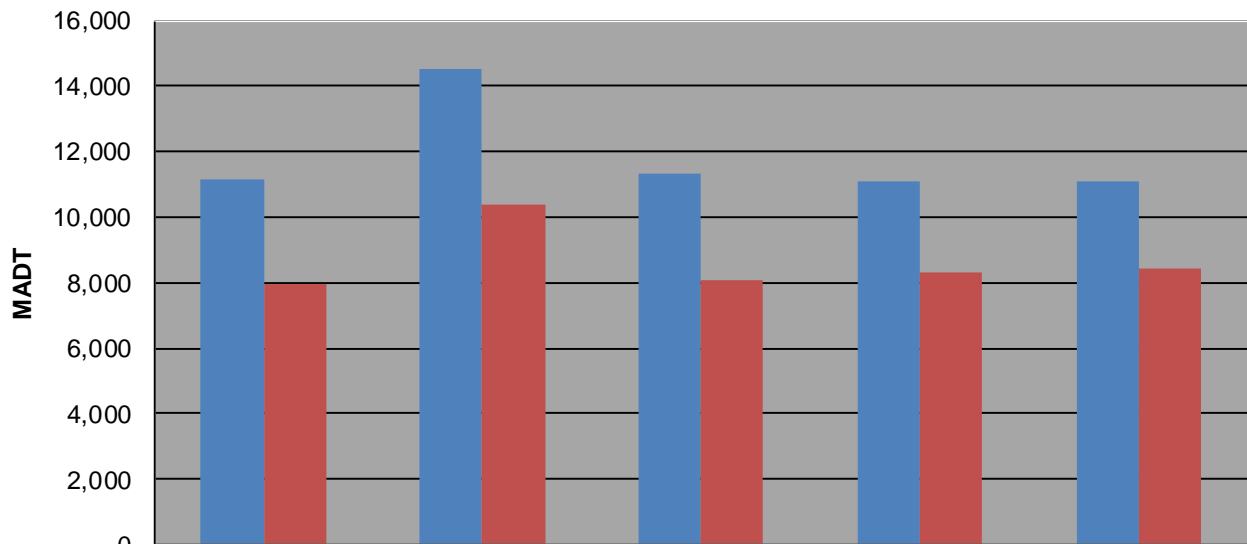
### Weekday (WD)/Weekend (WE) Monthly Average Daily Traffic



	Jan	Feb	Mar	Apr	May	Jun	Jul	Aug	Sep	Oct	Nov	Dec
'11 WD	8,884	9,004	8,882	10,020	11,134	12,866	11,088	11,486	10,620	9,640	9,910	9,550
'11 WE	5,732	6,470	6,222	7,558	7,956	10,226	8,432	7,748	7,508	7,218	6,700	6,572
'12 WD	9,008	9,152	9,620	13,896	14,530	12,422	9,134	8,548			8,008	9,590
'12 WE	6,060	6,436	6,930	9,662	10,360	9,776	7,962	7,172			4,882	6,466
'13 WD	8,826	9,056	9,042	9,770	11,304	11,582	10,898	11,008	11,030	11,004	9,914	9,414
'13 WE	6,016	6,090	6,250	7,100	8,068	8,982	7,854	7,862	8,336	8,092	6,794	6,364
'14 WD	8,660	9,098	9,196	10,088	11,074	11,252	10,530	10,418	10,070	9,984	8,918	8,980
'14 WE	6,032	6,022	6,208	7,196	8,298	8,190	7,786	7,538	8,212	7,396	6,312	6,278
'15 WD	8,784	8,976	9,392	10,582	11,118							
'15 WE	6,102	6,150	6,664	7,760	8,438							

Note: 'Weekday' defined as Monday-Friday, 'Weekend' defined as Saturday-Sunday

### Weekday/Weekend Monthly Average Daily Traffic ('11-'15)



	May-11	May-12	May-13	May-14	May-15
Weekday	11,134	14,530	11,304	11,074	11,118
Weekend	7,956	10,360	8,068	8,298	8,438