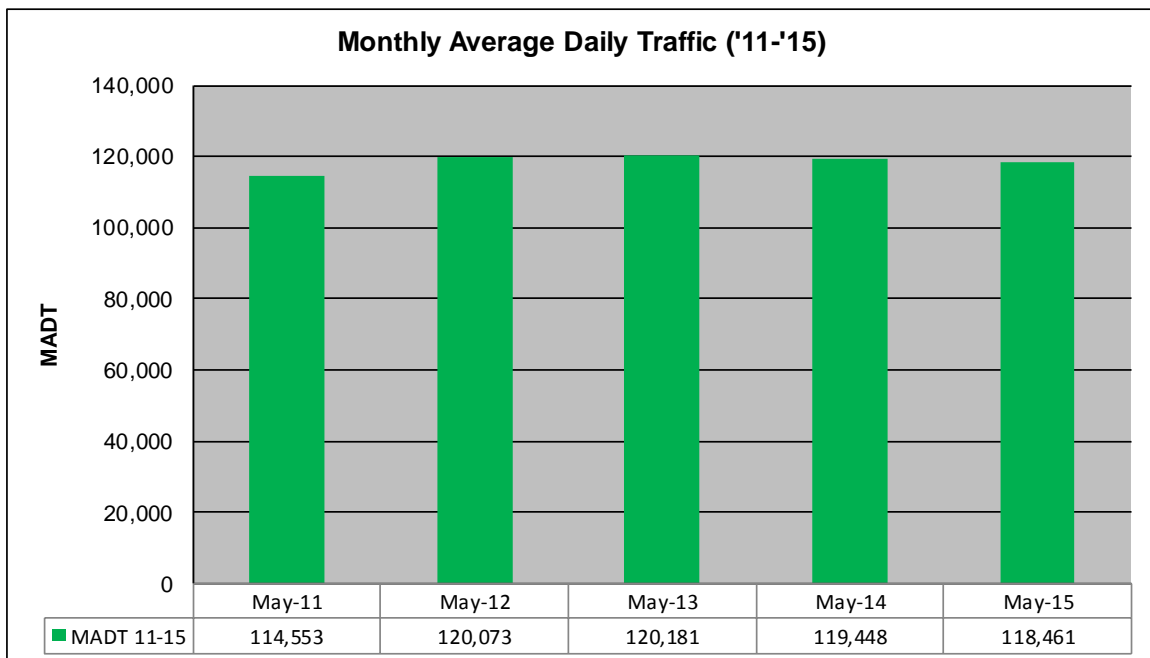
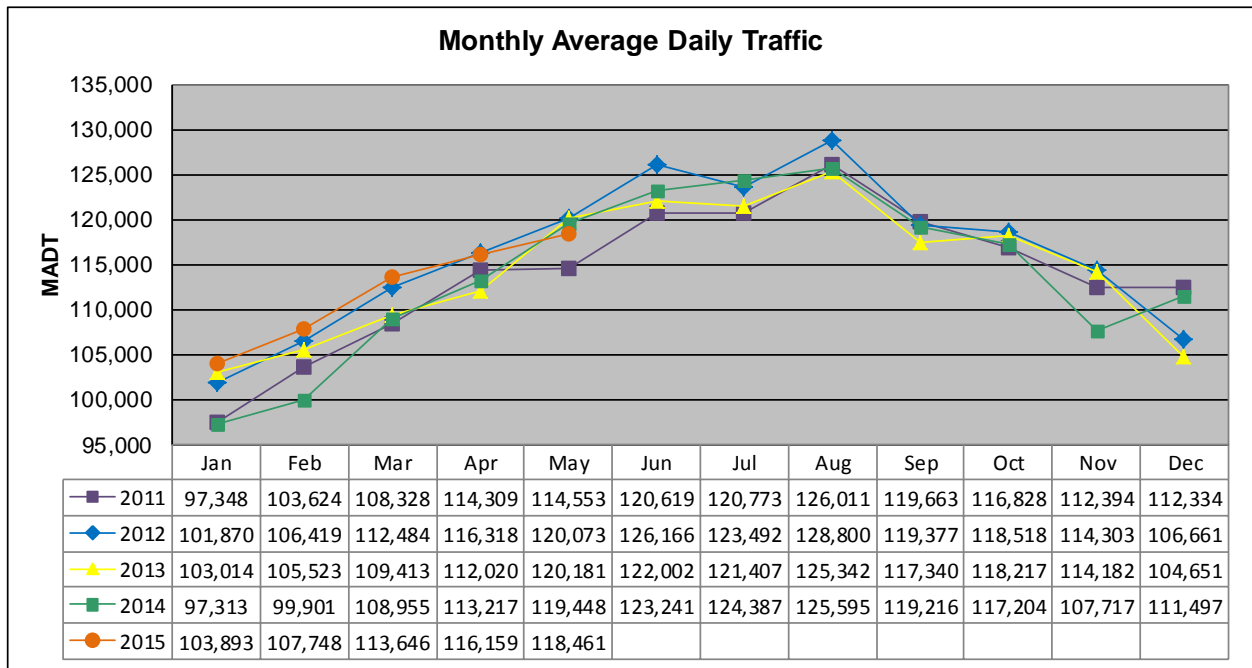


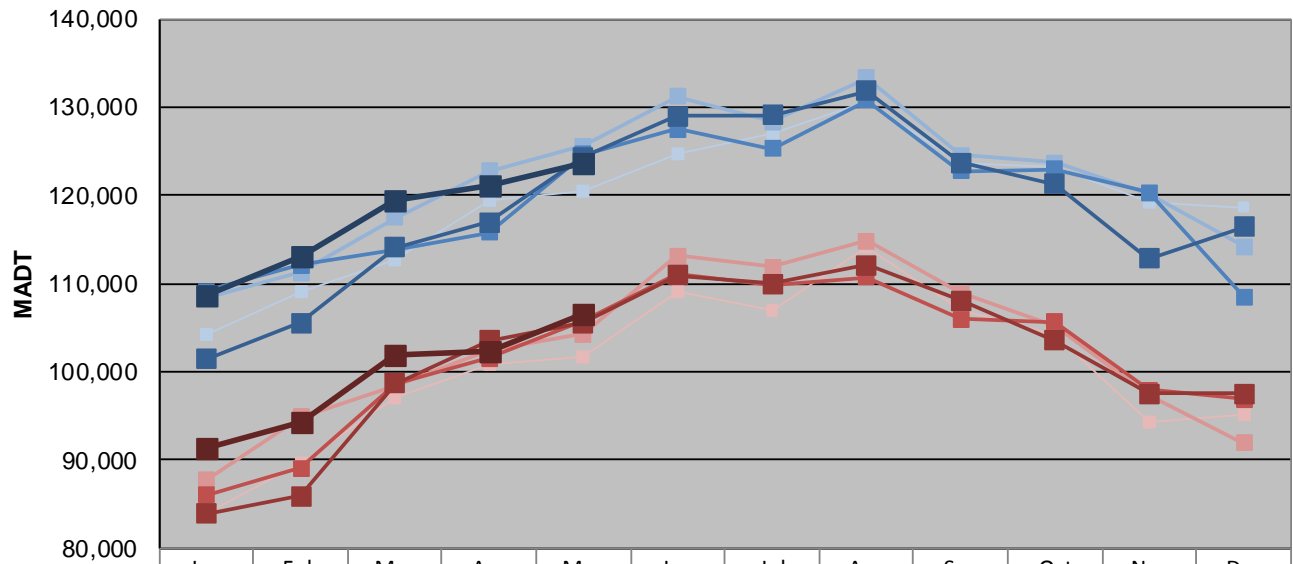
MONTHLY REPORT, STATION NO. 342 (ATR)

MAY 2015

Station Measurement: VOLUME		
Route: I-94	Route Direction: E/W	Lanes: 6
County: Hennepin		Closest City: Maple Grove
Functional Class: Urban Principal Arterial - Interstate		
Location: S OF CR30 (93RD AVE N) IN MAPLE GROVE		
Ref Post: 214+00.030	True Mile: 214.71	Sequence No. 9859
Volume: 3,672,280		MADT: 118,461
Weekday (M-F) MADT: 123,708		Weekend (Sa-Su) MADT: 106,468



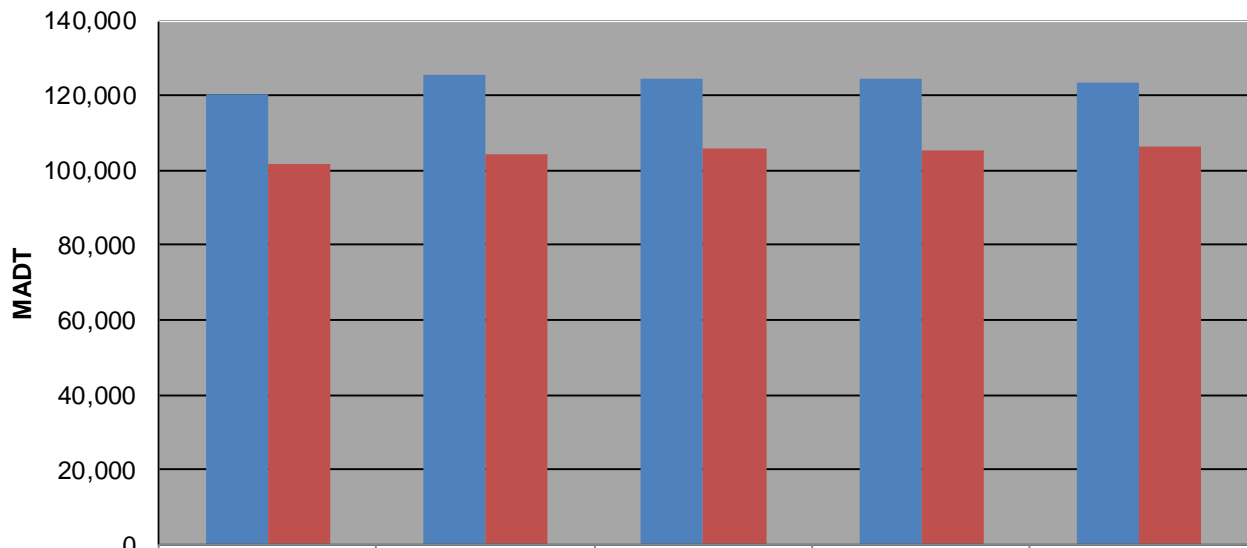
Weekday (WD)/Weekend (WE) Monthly Average Daily Traffic



	Jan	Feb	Mar	Apr	May	Jun	Jul	Aug	Sep	Oct	Nov	Dec
'11 WD	104,160	109,174	112,636	119,406	120,536	124,712	127,024	130,598	123,560	123,216	119,120	118,692
'11 WE	83,982	89,722	97,034	100,868	101,646	109,132	106,946	114,196	106,888	104,168	94,212	95,158
'12 WD	108,440	111,240	117,462	122,720	125,622	131,224	128,310	133,324	124,590	123,670	120,196	114,256
'12 WE	87,712	94,874	98,452	102,420	104,280	113,170	111,858	114,874	108,952	105,288	97,450	91,962
'13 WD	109,168	112,104	113,898	115,804	124,614	127,486	125,320	130,734	122,742	122,918	120,356	108,512
'13 WE	86,042	89,068	98,666	101,520	105,852	111,034	109,834	110,696	106,020	105,628	97,988	96,882
'14 WD	101,440	105,510	114,144	116,940	124,348	128,946	129,138	131,802	123,736	121,328	112,826	116,466
'14 WE	83,944	85,880	98,646	103,590	105,546	110,892	109,986	112,100	108,132	103,542	97,498	97,546
'15 WD	108,592	113,126	119,502	121,188	123,708							
'15 WE	91,256	94,302	101,836	102,320	106,468							

Note: 'Weekday' defined as Monday-Friday, 'Weekend' defined as Saturday-Sunday

Weekday/Weekend Monthly Average Daily Traffic ('11-'15)



	May-11	May-12	May-13	May-14	May-15
Weekday	120,536	125,622	124,614	124,348	123,708
Weekend	101,646	104,280	105,852	105,546	106,468