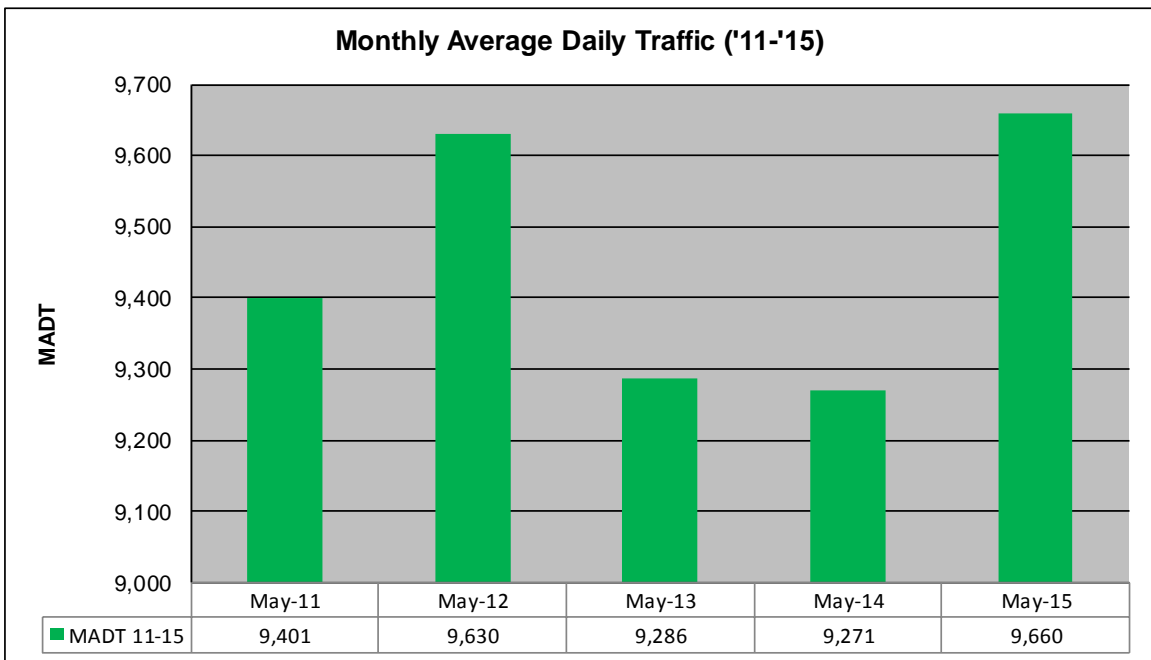
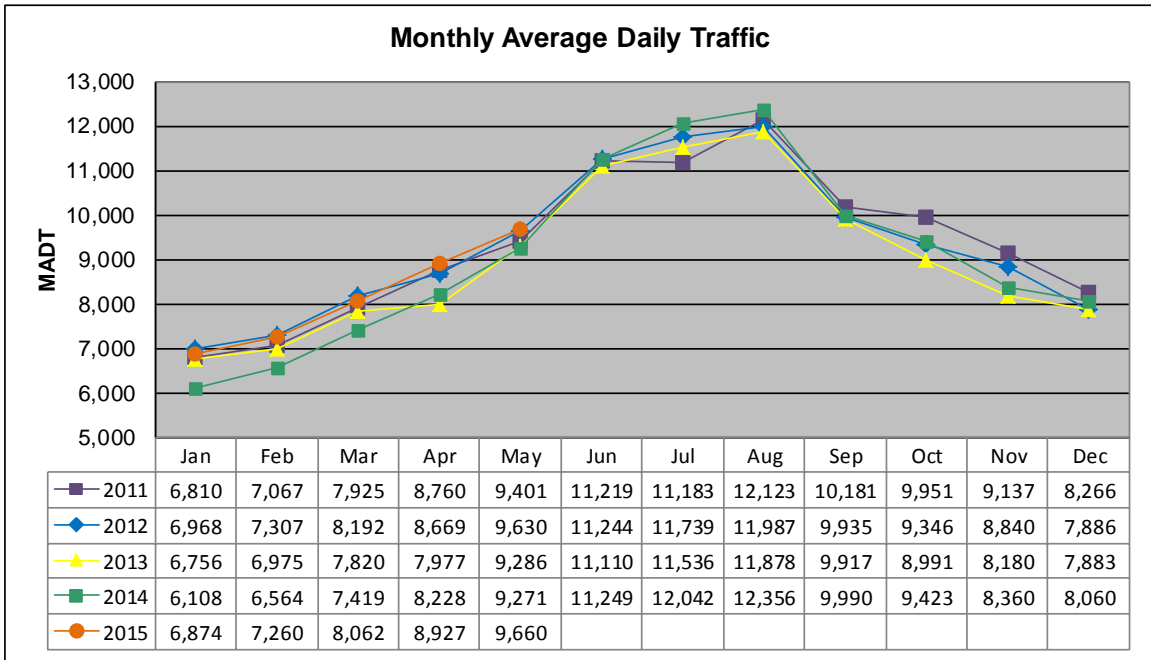


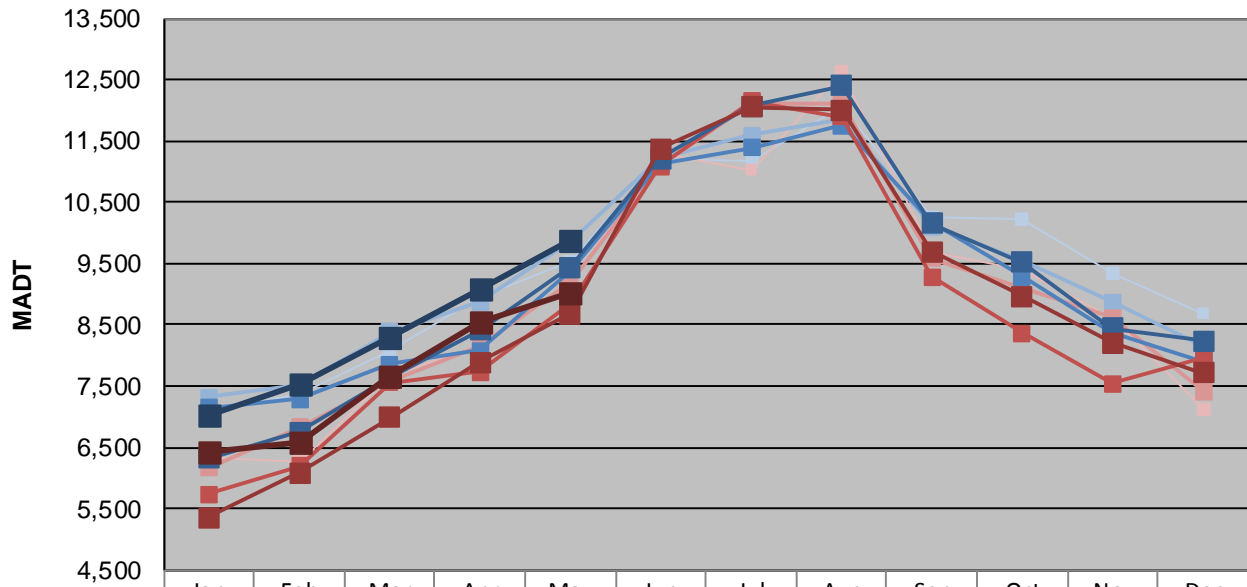
MONTHLY REPORT, STATION NO. 227 (ATR)

MAY 2015

Station Measurement: VOLUME/SPEED/CLASS		
Route: I-90	Route Direction: E/W	Lanes: 4
County: Freeborn		Closest City: Albert Lea
Functional Class: Rural Principal Arterial - Interstate		
Location: SW OF TH13, W OF ALBERT LEA		
Ref Post: 153+00.700	True Mile: 152.36	Sequence No. 9833
Volume: 299,465		MADT: 9,660
Weekday (M-F) MADT: 9,866		Weekend (Sa-Su) MADT: 9,036



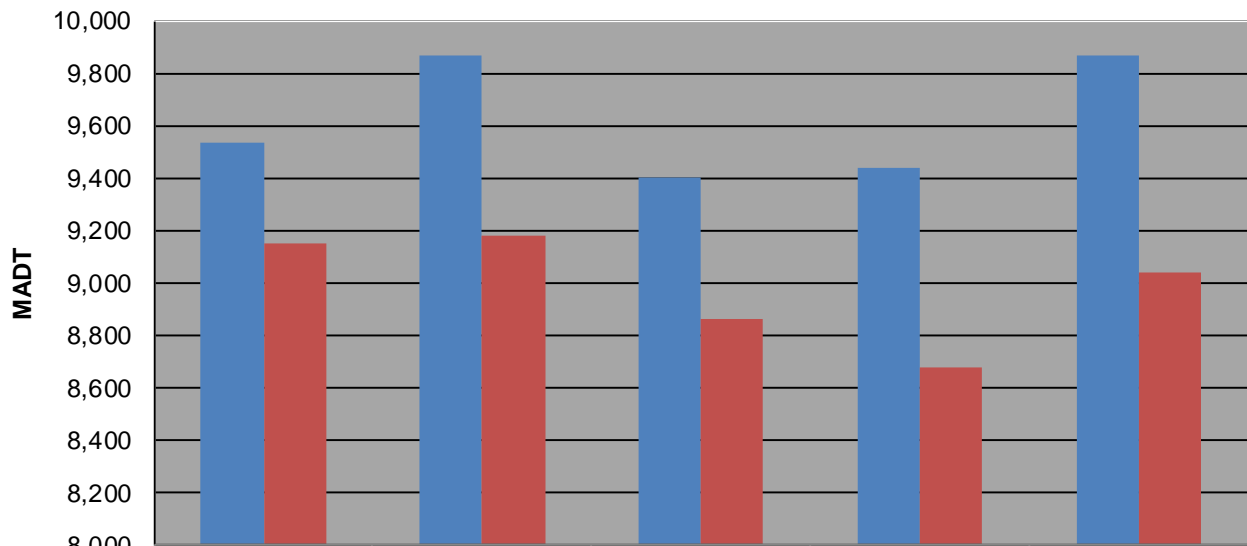
Weekday (WD)/Weekend (WE) Monthly Average Daily Traffic



	Jan	Feb	Mar	Apr	May	Jun	Jul	Aug	Sep	Oct	Nov	Dec
'11 WD	7,076	7,382	8,064	8,946	9,534	11,200	11,170	12,060	10,250	10,234	9,336	8,688
'11 WE	6,318	6,252	7,664	8,172	9,148	11,296	11,022	12,646	9,680	9,412	8,596	7,124
'12 WD	7,316	7,518	8,374	8,876	9,870	11,220	11,598	11,864	10,112	9,544	8,874	8,144
'12 WE	6,160	6,822	7,582	8,162	9,182	11,086	12,118	12,102	9,586	9,086	8,616	7,416
'13 WD	7,150	7,286	7,854	8,080	9,400	11,120	11,392	11,758	10,186	9,278	8,374	7,902
'13 WE	5,736	6,196	7,554	7,732	8,862	11,092	12,146	11,900	9,284	8,362	7,544	7,952
'14 WD	6,320	6,754	7,642	8,410	9,436	11,214	12,068	12,408	10,148	9,526	8,440	8,240
'14 WE	5,356	6,088	6,992	7,892	8,676	11,374	12,050	12,004	9,702	8,974	8,202	7,708
'15 WD	7,024	7,530	8,286	9,094	9,866							
'15 WE	6,410	6,586	7,674	8,546	9,036							

Note: 'Weekday' defined as Monday-Friday, 'Weekend' defined as Saturday-Sunday

Weekday/Weekend Monthly Average Daily Traffic ('11-'15)



	May-11	May-12	May-13	May-14	May-15
Weekday	9,534	9,870	9,400	9,436	9,866
Weekend	9,148	9,182	8,862	8,676	9,036