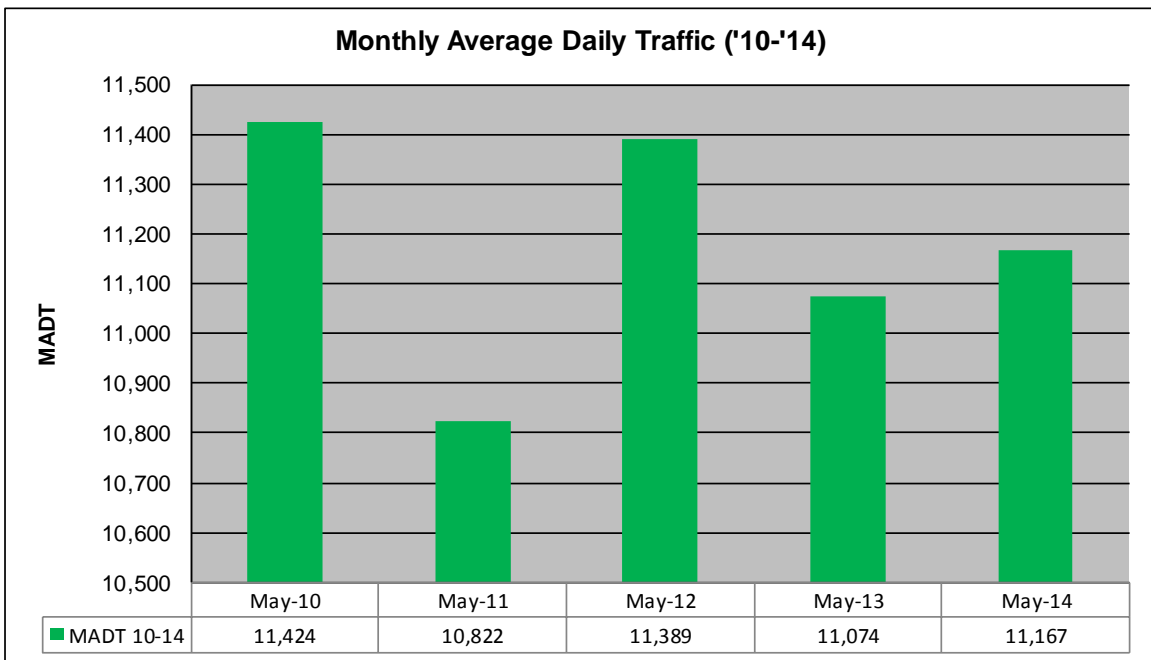
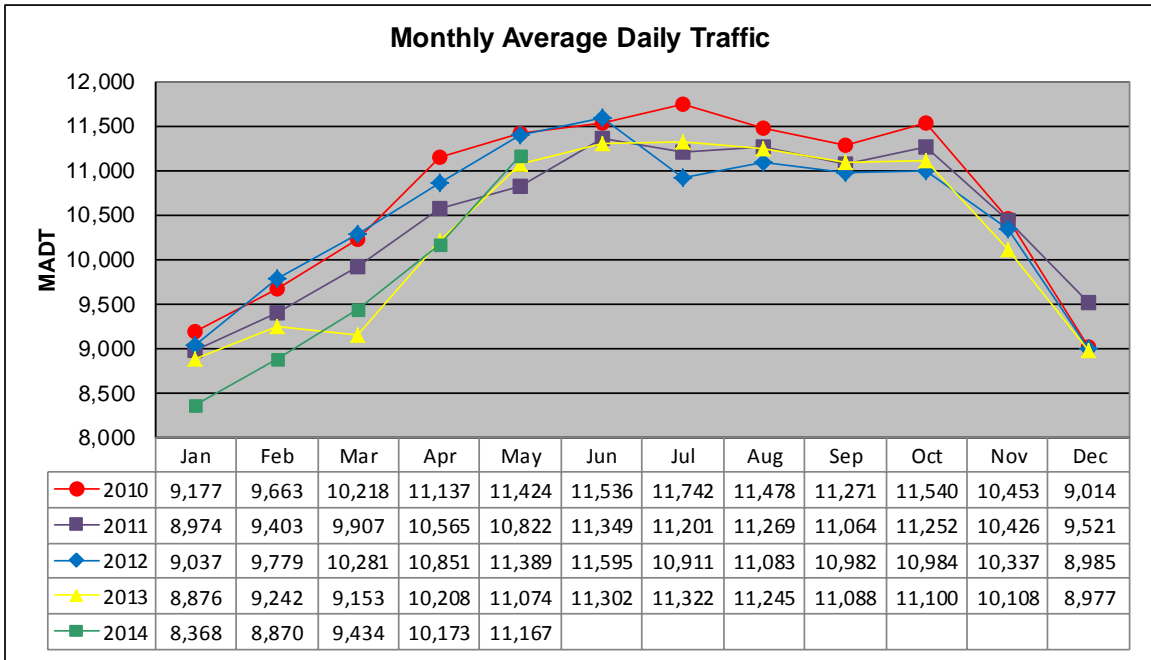


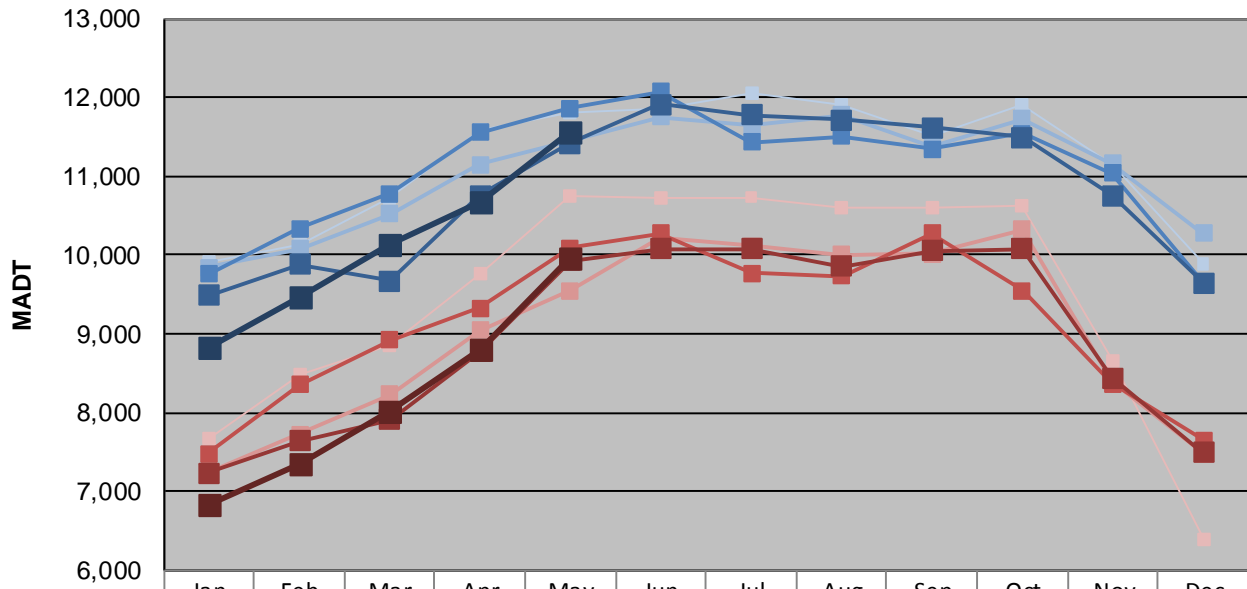
# MONTHLY REPORT, STATION NO. 39 (WIM)

## MAY 2014

Station Measurement: VOLUME/SPEED/CLASS/WEIGHT		
Route: TH 43	Route Direction: E/W	Lanes: 2
County: Winona		Closest City: Winona
Functional Class: Urban Other Principal Arterial		
Location: NE OF MSAS101 (2ND ST) IN WINONA		
Ref Post: 045+00.245	True Mile: 44.863	Sequence No. 6361
<b>Volume: 346,182</b>		<b>MADT: 11,167</b>
<b>Weekday (M-F) MADT: 11,562</b>		<b>Weekend (Sa-Su) MADT: 9,948</b>



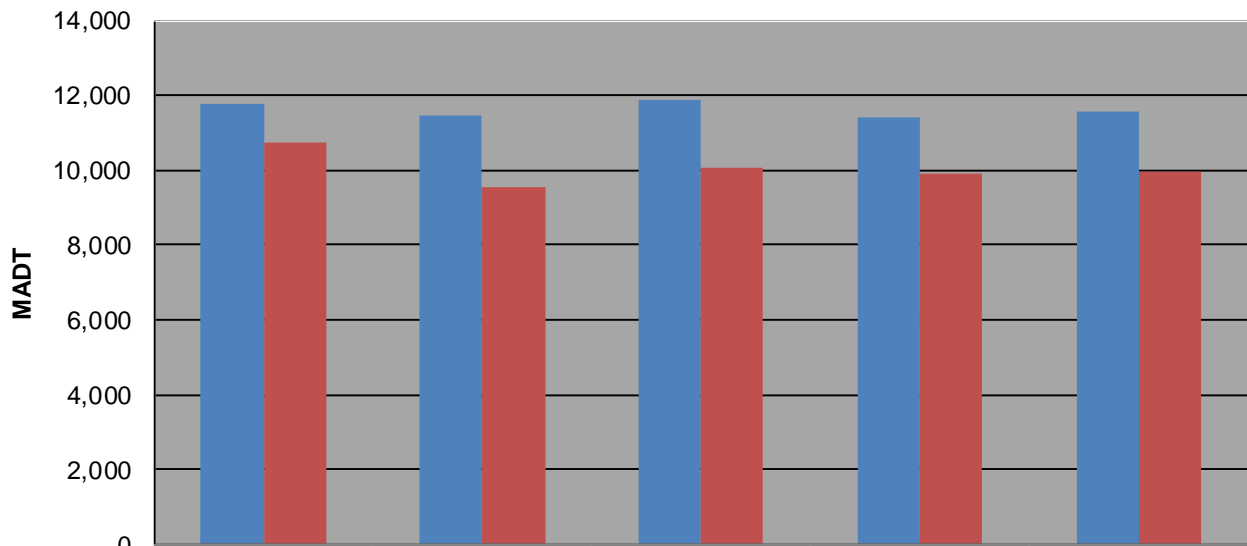
**Weekday (WD)/Weekend (WE) Monthly Average Daily Traffic**



	Jan	Feb	Mar	Apr	May	Jun	Jul	Aug	Sep	Oct	Nov	Dec
'10 WD	9,906	10,138	10,734	11,578	11,796	11,862	12,054	11,910	11,514	11,900	11,132	9,884
'10 WE	7,658	8,476	8,856	9,770	10,738	10,722	10,730	10,612	10,608	10,622	8,658	6,382
'11 WD	9,842	10,076	10,520	11,144	11,444	11,756	11,642	11,776	11,372	11,728	11,156	10,278
'11 WE	7,242	7,724	8,234	9,040	9,550	10,228	10,110	9,998	10,010	10,326	8,402	7,474
'12 WD	9,756	10,330	10,774	11,560	11,866	12,072	11,426	11,504	11,340	11,542	11,036	9,642
'12 WE	7,478	8,352	8,918	9,330	10,092	10,270	9,774	9,730	10,270	9,542	8,368	7,646
'13 WD	9,486	9,884	9,674	10,754	11,420	11,916	11,778	11,712	11,616	11,488	10,754	9,648
'13 WE	7,230	7,638	7,914	8,770	9,930	10,076	10,076	9,856	10,052	10,074	8,434	7,496
'14 WD	8,838	9,480	10,126	10,680	11,562							
'14 WE	6,826	7,346	8,024	8,794	9,948							

Note: 'Weekday' defined as Monday-Friday, 'Weekend' defined as Saturday-Sunday

**Weekday/Weekend Monthly Average Daily Traffic ('10-'14)**



	May-10	May-11	May-12	May-13	May-14
Weekday	11,796	11,444	11,866	11,420	11,562
Weekend	10,738	9,550	10,092	9,930	9,948