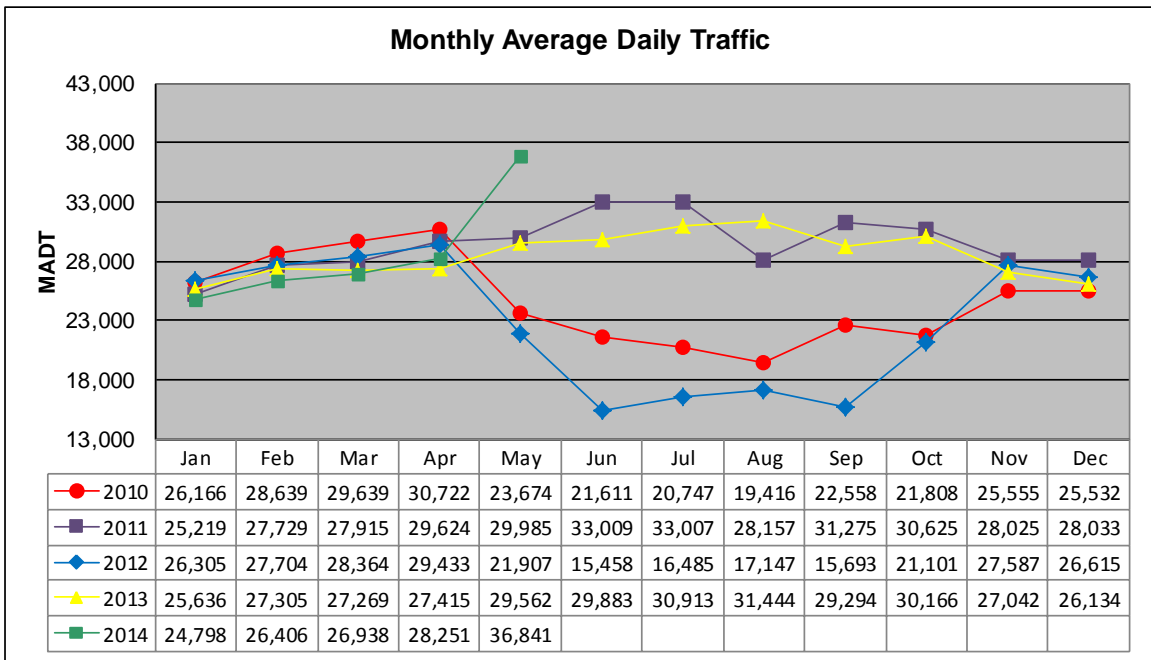


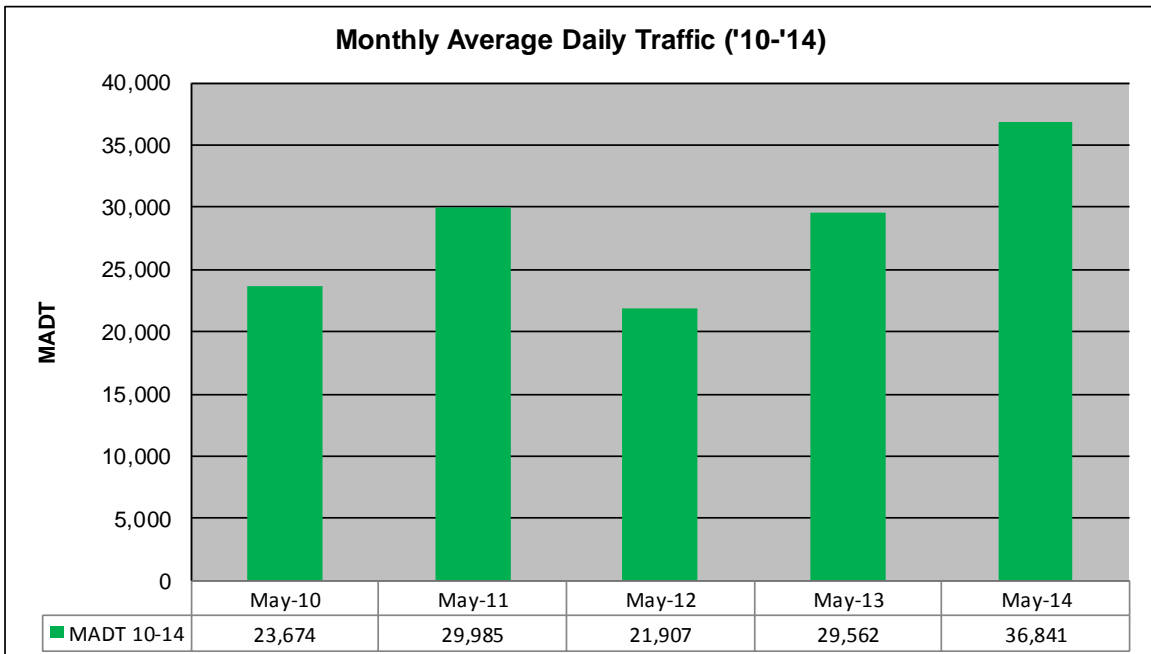
MONTHLY REPORT, STATION NO. 38 (WIM)

MAY 2014

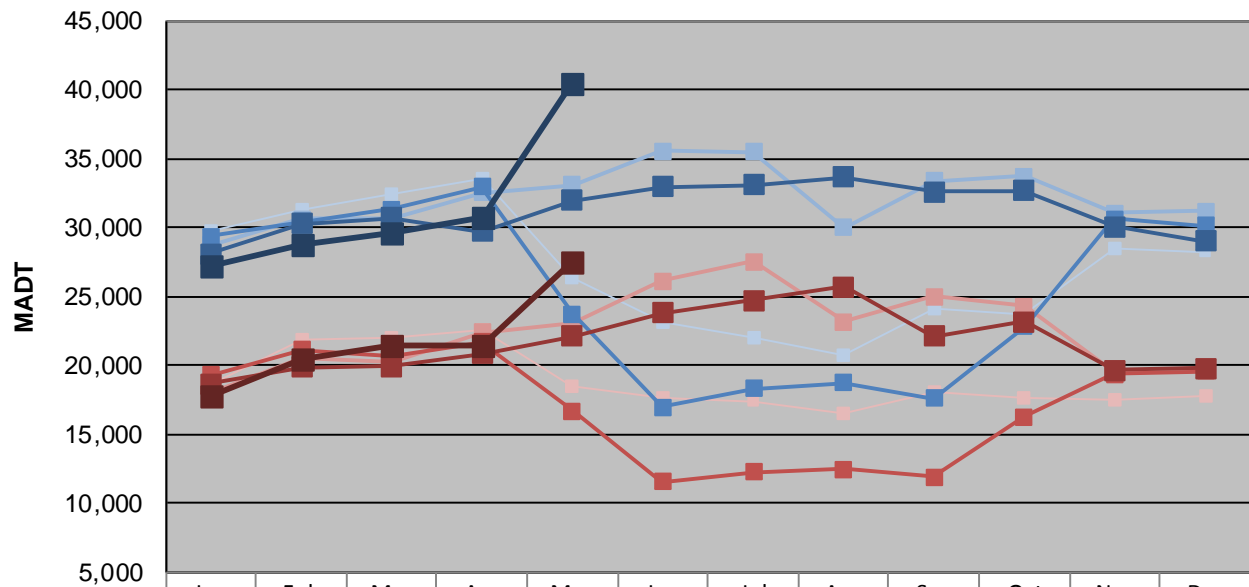
| | | |
|---|----------------------|-------------------------------------|
| Station Measurement: VOLUME/SPEED/CLASS/WEIGHT | | |
| Route: I-535 | Route Direction: N/S | Lanes: 4 |
| County: St Louis | Closest City: Duluth | |
| Functional Class: Urban Principal Arterial - Interstate | | |
| Location: SW OF MSAS149 (GARFIELD AVE) IN DULUTH | | |
| Ref Post: 001+00.053 | True Mile: 1.053 | Sequence No. 9823 |
| Volume: 1,142,062 | | MADT: 36,841 |
| Weekday (M-F) MADT: 40,404 | | Weekend (Sa-Su) MADT: 27,506 |



Note: Decrease in traffic June to September 2010, August 2011, and May to September 2012 due to construction on I-535... Increase in traffic May 2014 due to detour from I-35



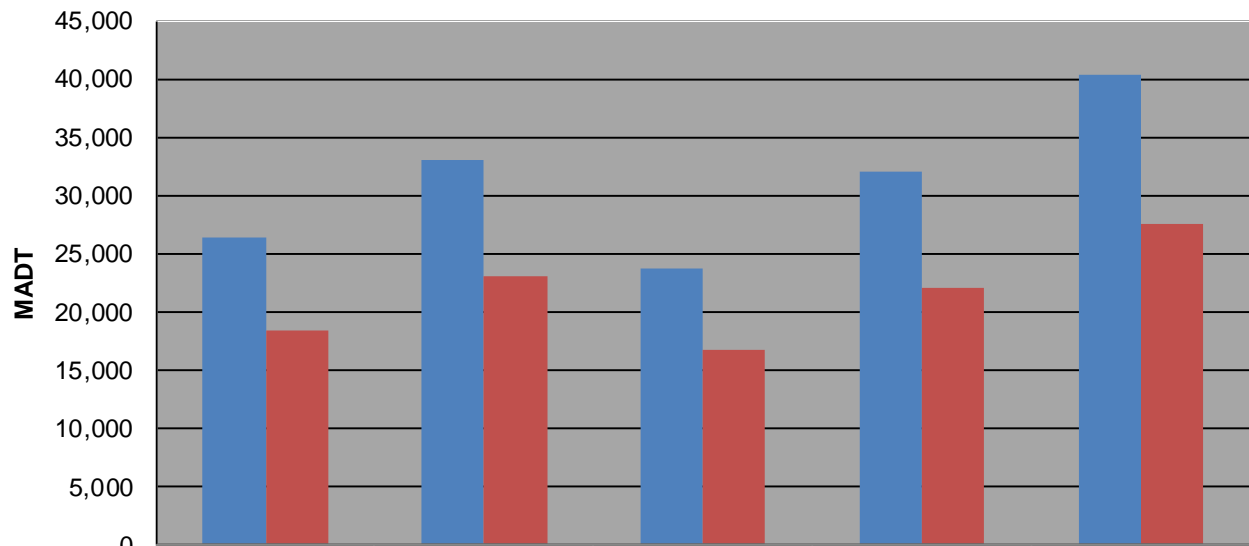
Weekday (WD)/Weekend (WE) Monthly Average Daily Traffic



| | Jan | Feb | Mar | Apr | May | Jun | Jul | Aug | Sep | Oct | Nov | Dec |
|--------|--------|--------|--------|--------|--------|--------|--------|--------|--------|--------|--------|--------|
| '10 WD | 29,784 | 31,348 | 32,348 | 33,588 | 26,304 | 23,128 | 21,960 | 20,710 | 24,168 | 23,722 | 28,516 | 28,236 |
| '10 WE | 18,586 | 21,866 | 22,024 | 22,548 | 18,424 | 17,586 | 17,424 | 16,446 | 18,104 | 17,576 | 17,554 | 17,758 |
| '11 WD | 28,722 | 30,600 | 30,642 | 32,540 | 33,082 | 35,532 | 35,460 | 29,982 | 33,378 | 33,740 | 31,034 | 31,172 |
| '11 WE | 17,994 | 20,554 | 20,256 | 22,378 | 23,012 | 26,096 | 27,534 | 23,134 | 25,010 | 24,254 | 19,572 | 19,866 |
| '12 WD | 29,374 | 30,388 | 31,334 | 32,922 | 23,698 | 16,972 | 18,274 | 18,728 | 17,590 | 22,788 | 30,604 | 30,108 |
| '12 WE | 19,280 | 21,126 | 20,734 | 21,666 | 16,692 | 11,574 | 12,244 | 12,466 | 11,900 | 16,278 | 19,394 | 19,574 |
| '13 WD | 28,082 | 30,274 | 30,670 | 29,696 | 31,990 | 32,926 | 33,066 | 33,624 | 32,598 | 32,646 | 30,074 | 29,020 |
| '13 WE | 18,636 | 19,884 | 19,906 | 20,848 | 22,088 | 23,800 | 24,684 | 25,706 | 22,132 | 23,164 | 19,610 | 19,770 |
| '14 WD | 27,156 | 28,780 | 29,558 | 30,716 | 40,404 | | | | | | | |
| '14 WE | 17,746 | 20,472 | 21,432 | 21,476 | 27,506 | | | | | | | |

Note: 'Weekday' defined as Monday-Friday, 'Weekend' defined as Saturday-Sunday

Weekday/Weekend Monthly Average Daily Traffic ('10-'14)



| | May-10 | May-11 | May-12 | May-13 | May-14 |
|---------|--------|--------|--------|--------|--------|
| Weekday | 26,304 | 33,082 | 23,698 | 31,990 | 40,404 |
| Weekend | 18,424 | 23,012 | 16,692 | 22,088 | 27,506 |