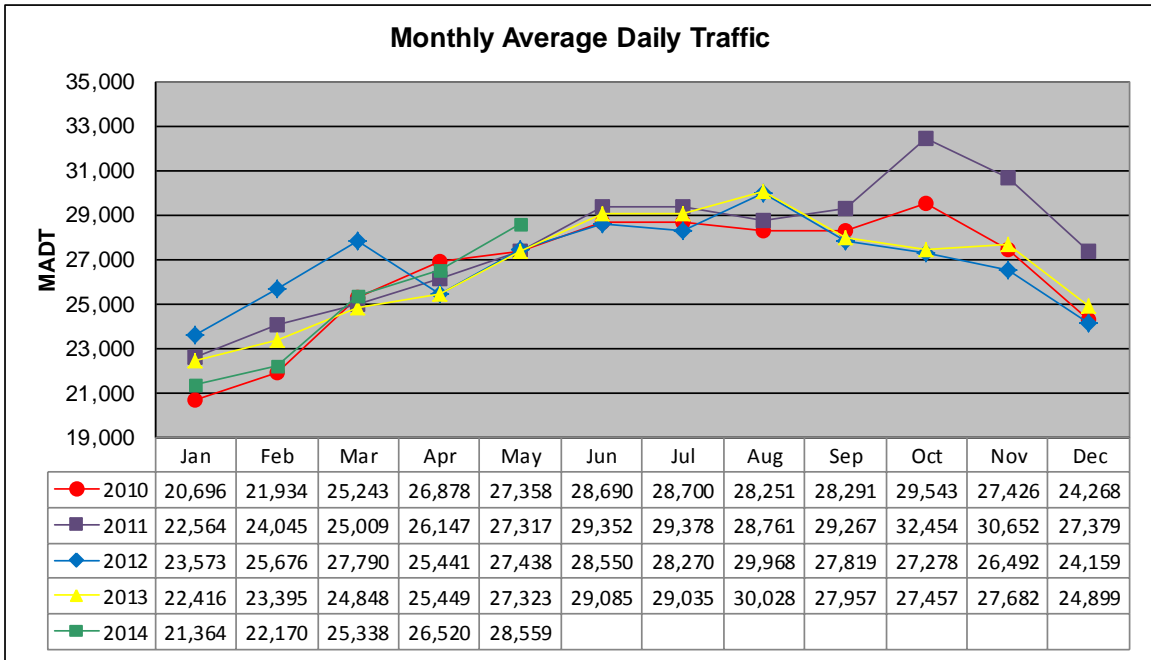


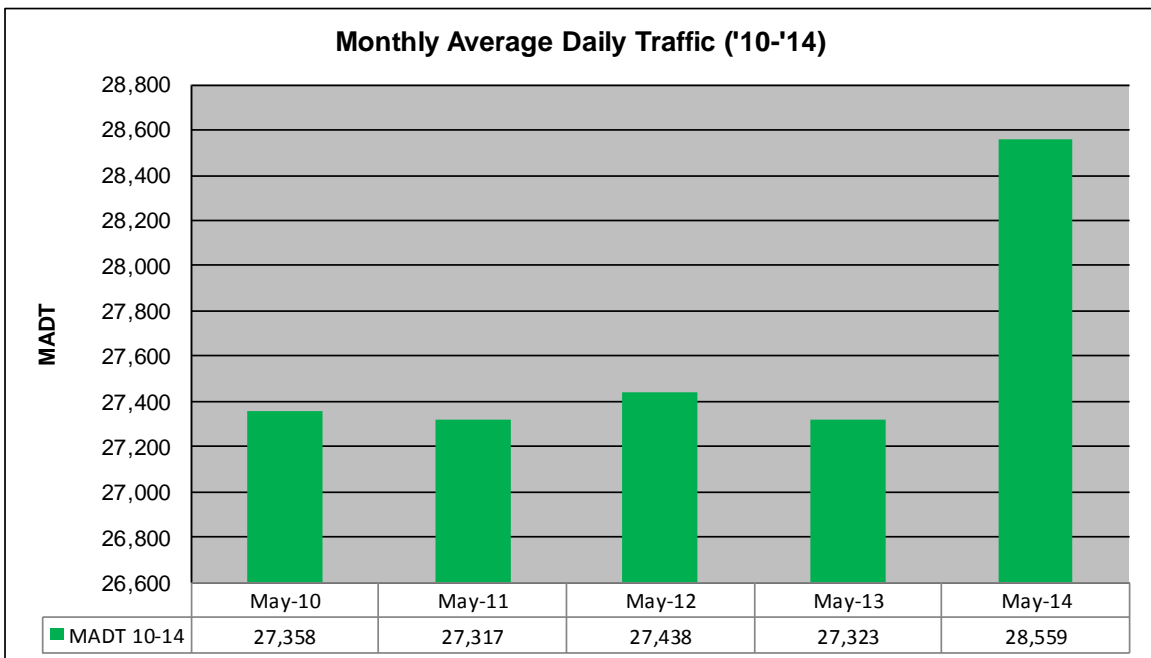
MONTHLY REPORT, STATION NO. 32 (WIM)

MAY 2014

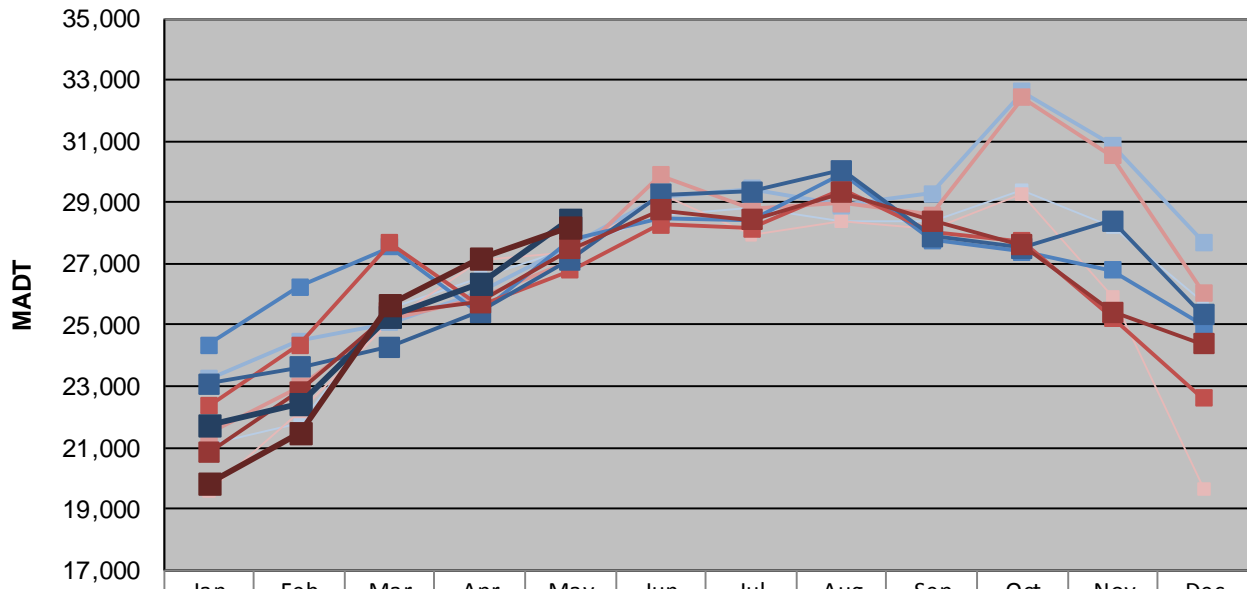
Station Measurement: VOLUME/SPEED/CLASS		
Route: TH 52	Route Direction: N/S	Lanes: 4
County: Olmsted	Closest City: Oronoco	
Functional Class: Rural Principal Arterial - Other		
Location: .25 MI N OF CSAH12 (100TH ST NW), S OF ORONOCO		
Ref Post: 066+00.000	True Mile: 65.344	Sequence No. 67740
Volume: 885,316		MADT: 28,559
Weekday (M-F) MADT: 28,432		Weekend (Sa-Su) MADT: 28,210



Note: Volume data reported as ATR 188 from 2010-2012



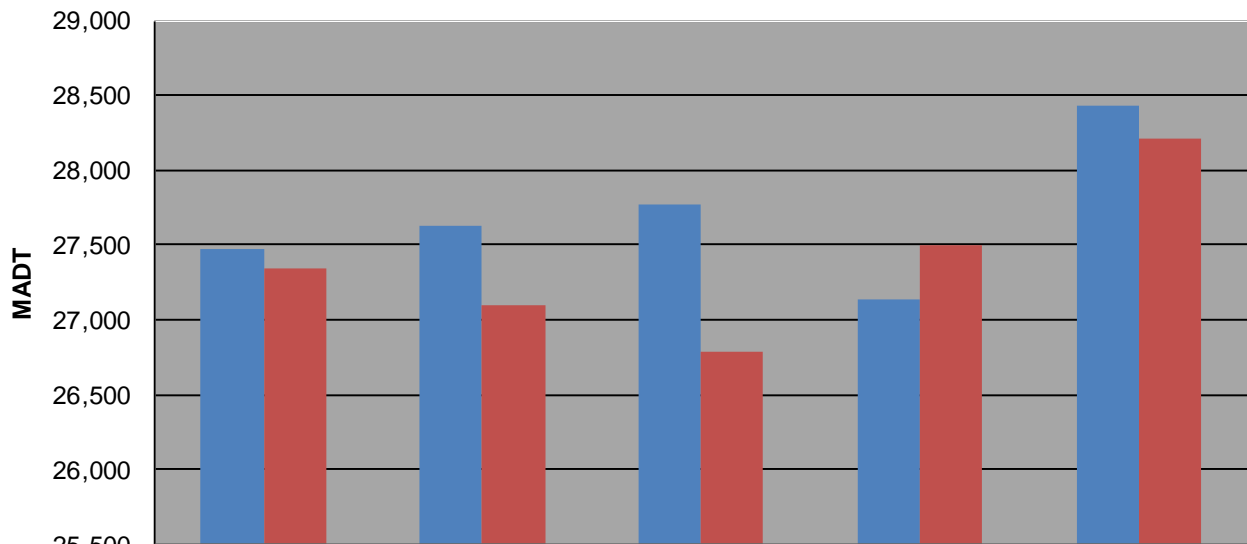
Weekday (WD)/Weekend (WE) Monthly Average Daily Traffic



	Jan	Feb	Mar	Apr	May	Jun	Jul	Aug	Sep	Oct	Nov	Dec
'10 WD	21,126	21,824	25,526	26,556	27,474	28,608	28,800	28,358	28,366	29,426	28,192	25,754
'10 WE	19,598	22,208	25,098	27,126	27,344	29,292	27,934	28,416	28,160	29,260	25,900	19,616
'11 WD	23,234	24,474	25,084	26,060	27,626	29,196	29,440	28,924	29,274	32,602	30,862	27,704
'11 WE	21,430	22,976	25,184	25,878	27,100	29,878	28,796	28,982	28,580	32,418	30,516	26,058
'12 WD	24,342	26,264	27,536	25,404	27,774	28,452	28,394	29,968	27,768	27,384	26,774	24,994
'12 WE	22,346	24,352	27,666	25,614	26,792	28,276	28,164	29,460	28,040	27,726	25,226	22,604
'13 WD	23,074	23,618	24,288	25,430	27,142	29,256	29,338	30,052	27,896	27,530	28,412	25,322
'13 WE	20,842	22,836	25,392	25,736	27,494	28,744	28,450	29,336	28,408	27,626	25,428	24,388
'14 WD	21,706	22,448	25,264	26,382	28,432							
'14 WE	19,818	21,478	25,690	27,198	28,210							

Note: 'Weekday' defined as Monday-Friday, 'Weekend' defined as Saturday-Sunday

Weekday/Weekend Monthly Average Daily Traffic ('10-'14)



	May-10	May-11	May-12	May-13	May-14
Weekday	27,474	27,626	27,774	27,142	28,432
Weekend	27,344	27,100	26,792	27,494	28,210