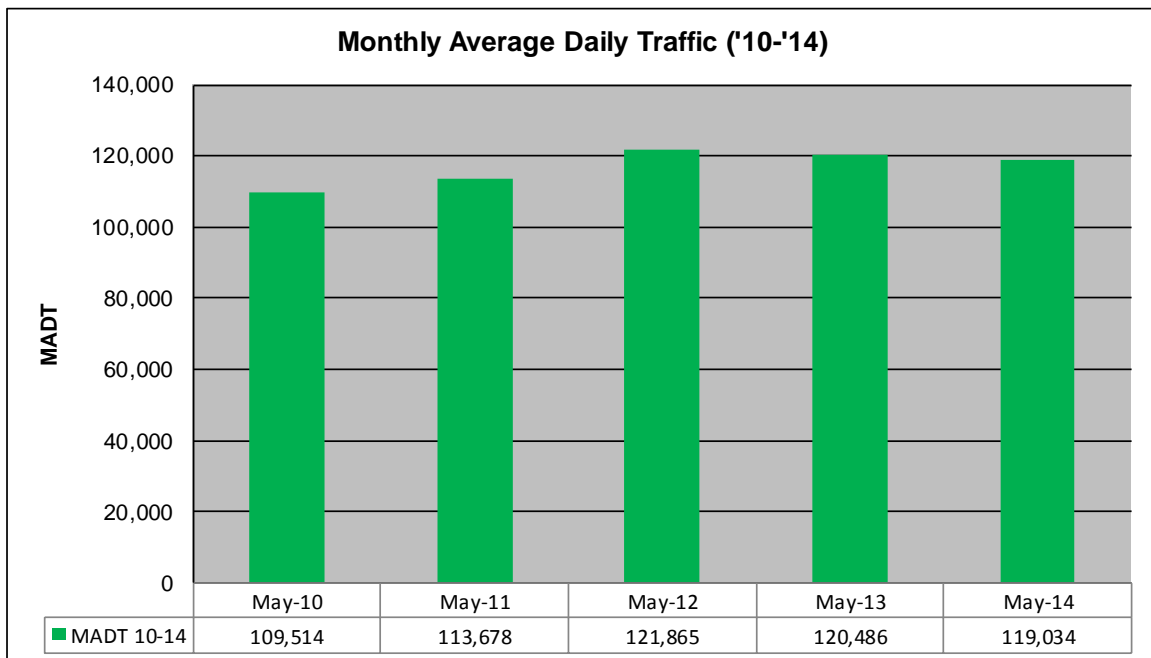
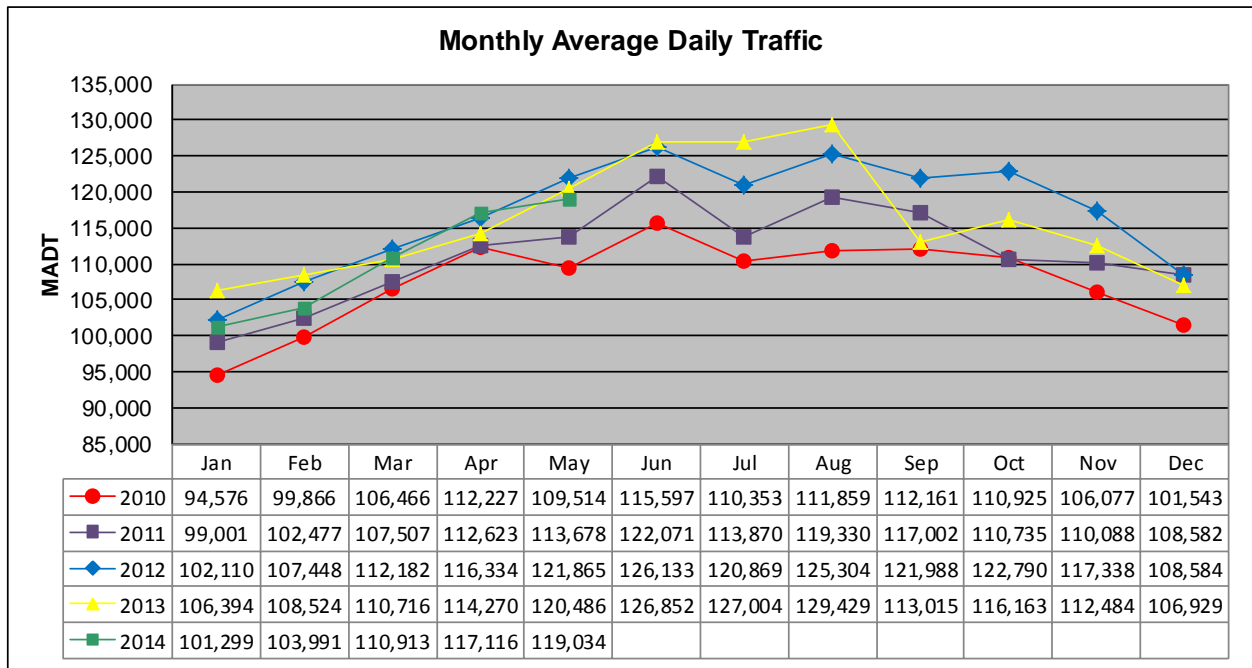


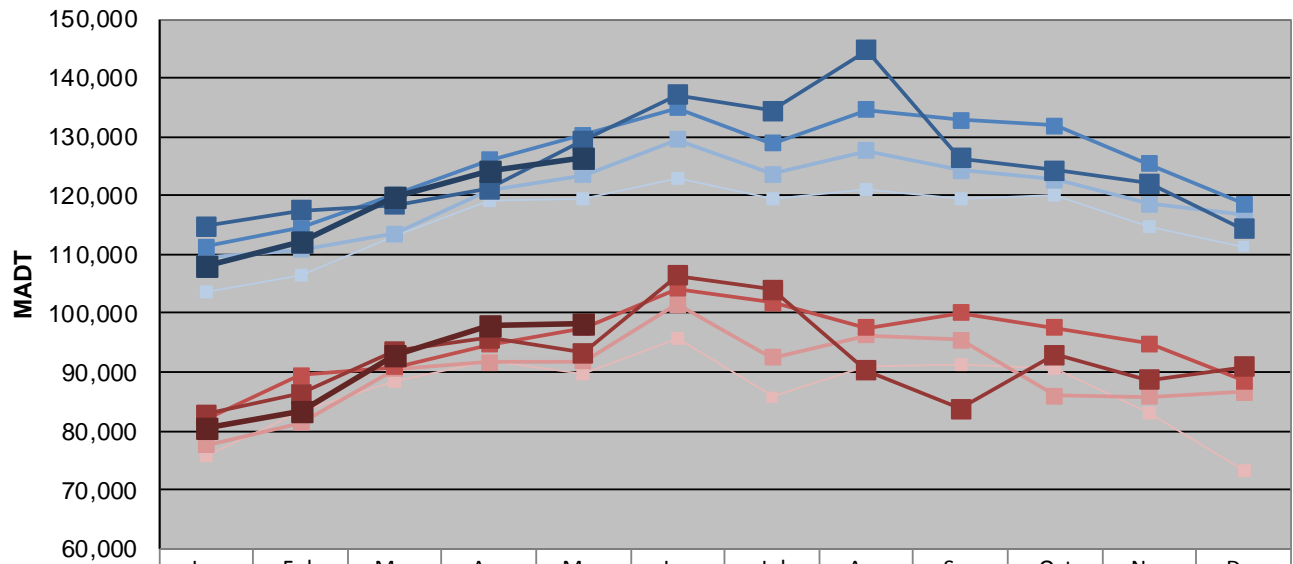
MONTHLY REPORT, STATION NO. 315 (ATR)

MAY 2014

Station Measurement: VOLUME		
Route: I-35W	Route Direction: N/S	Lanes: 6
County: Hennepin		Closest City: Bloomington
Functional Class: Urban Principal Arterial - Interstate		
Location: N OF MN RIVER BRIDGE IN BLOOMINGTON		
Ref Post: 004+00.500	True Mile: 4.55	Sequence No. 9843
Volume: 3,690,061		MADT: 119,034
Weekday (M-F) MADT: 126,566		Weekend (Sa-Su) MADT: 98,366



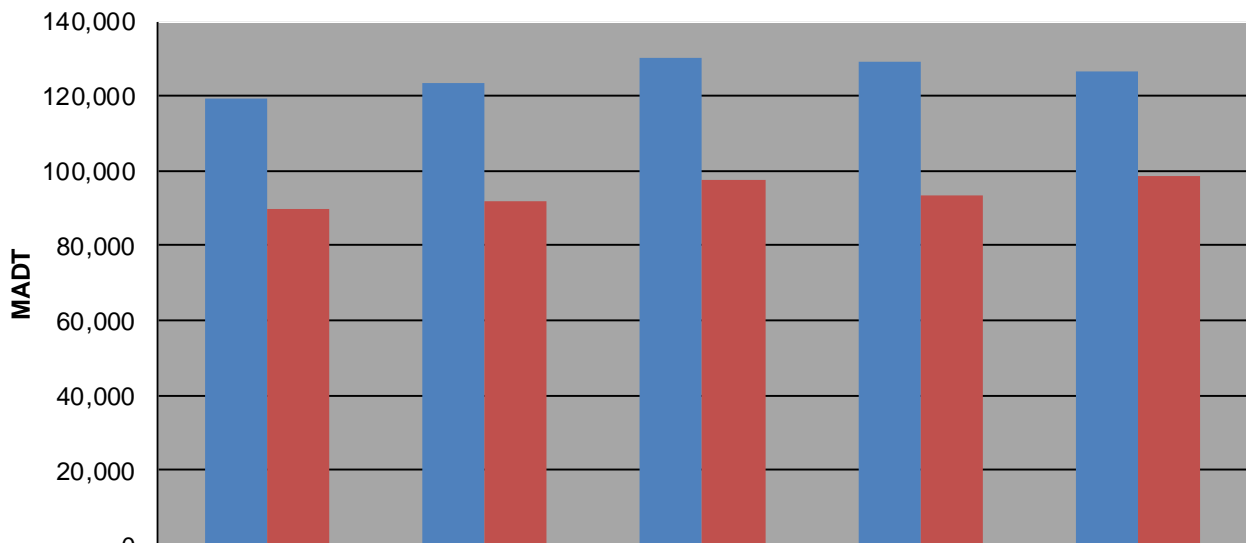
Weekday (WD)/Weekend (WE) Monthly Average Daily Traffic



	Jan	Feb	Mar	Apr	May	Jun	Jul	Aug	Sep	Oct	Nov	Dec
'10 WD	103,556	106,480	113,056	119,210	119,410	122,926	119,624	121,010	119,460	120,228	114,604	111,318
'10 WE	75,854	83,336	88,476	92,062	89,838	95,628	85,830	90,874	91,420	90,622	82,914	73,084
'11 WD	109,596	110,914	113,540	121,030	123,434	129,472	123,728	127,650	124,220	122,732	118,674	116,900
'11 WE	77,608	81,360	90,632	91,696	91,868	101,462	92,470	96,312	95,542	86,052	85,794	86,552
'12 WD	111,306	114,452	120,104	126,114	130,234	134,840	128,810	134,654	132,908	131,874	125,456	118,666
'12 WE	81,834	89,460	90,948	94,732	97,526	104,268	101,802	97,532	100,148	97,580	94,898	88,498
'13 WD	114,730	117,442	118,412	121,070	129,364	137,078	134,486	144,776	126,416	124,228	122,080	114,264
'13 WE	82,864	86,228	93,540	95,780	93,210	106,402	104,066	90,204	83,706	92,990	88,602	90,924
'14 WD	108,020	112,210	119,784	124,124	126,566							
'14 WE	80,430	83,444	92,956	97,924	98,366							

Note: 'Weekday' defined as Monday-Friday, 'Weekend' defined as Saturday-Sunday

Weekday/Weekend Monthly Average Daily Traffic ('10-'14)



	May-10	May-11	May-12	May-13	May-14
Weekday	119,410	123,434	130,234	129,364	126,566
Weekend	89,838	91,868	97,526	93,210	98,366