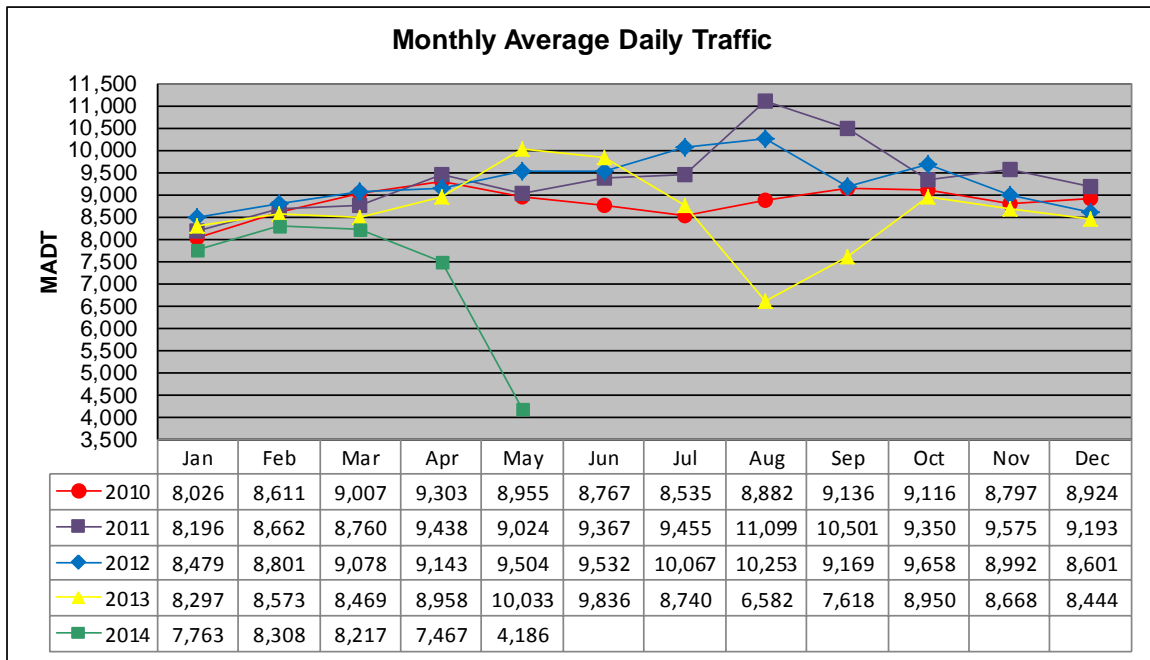


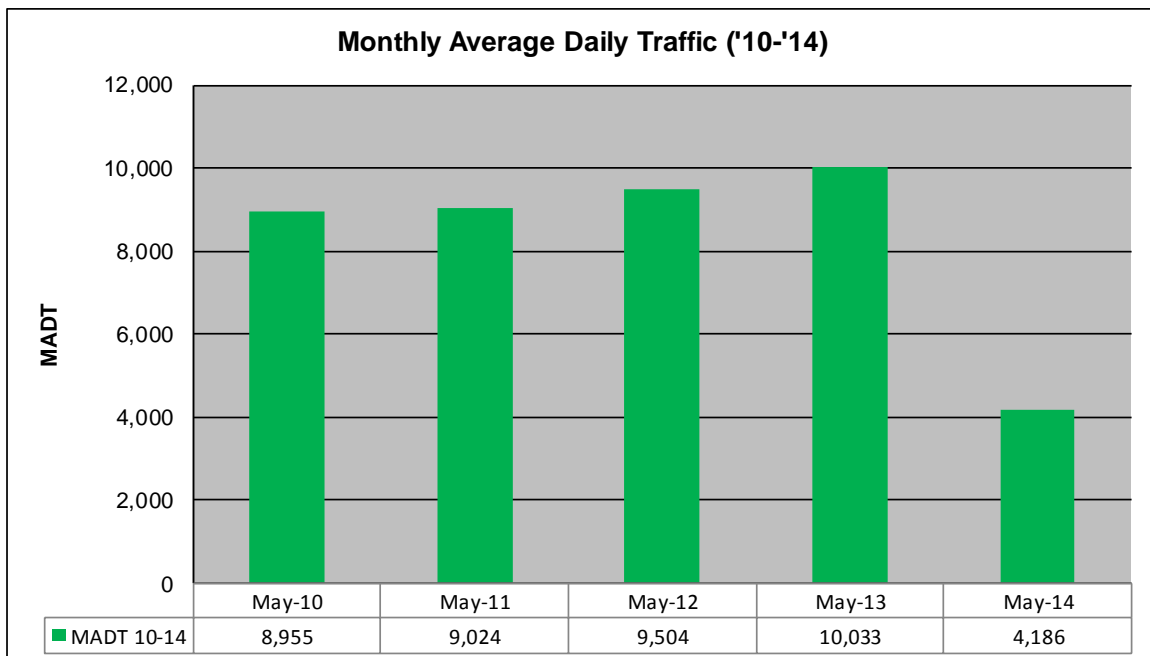
MONTHLY REPORT, STATION NO. 28 (ATR)

MAY 2014

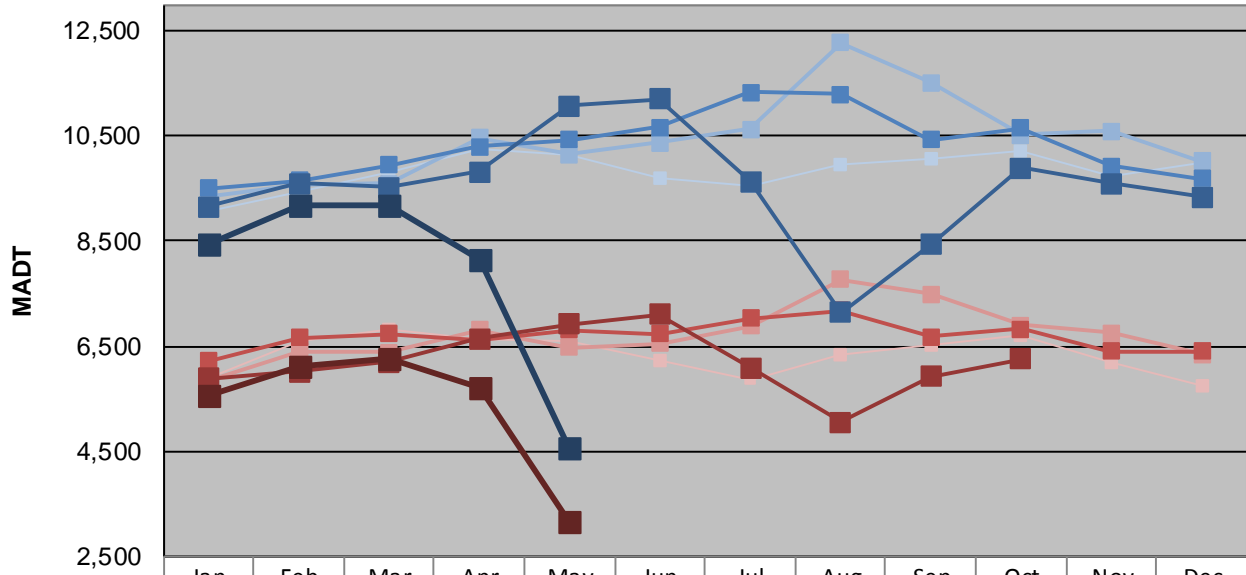
Station Measurement: VOLUME		
Route: MSAS 114	Route Direction: E/W	Lanes: 2
County: Stearns	Closest City: St Cloud	
Functional Class: Urban Minor Arterial		
Location: W OF 25TH AVE N IN ST CLOUD		
Ref Post: 000+00.750	True Mile: 0.75	Sequence No. 9813
Volume: 129,764		MADT: 4,186
Weekday (M-F) MADT: 4,564		Weekend (Sa-Su) MADT: 3,156



Note: Increase in traffic August/September 2011 due to detour from TH 23... Decrease in traffic August/September 2013 and April/May 2014 due to construction on TH 15



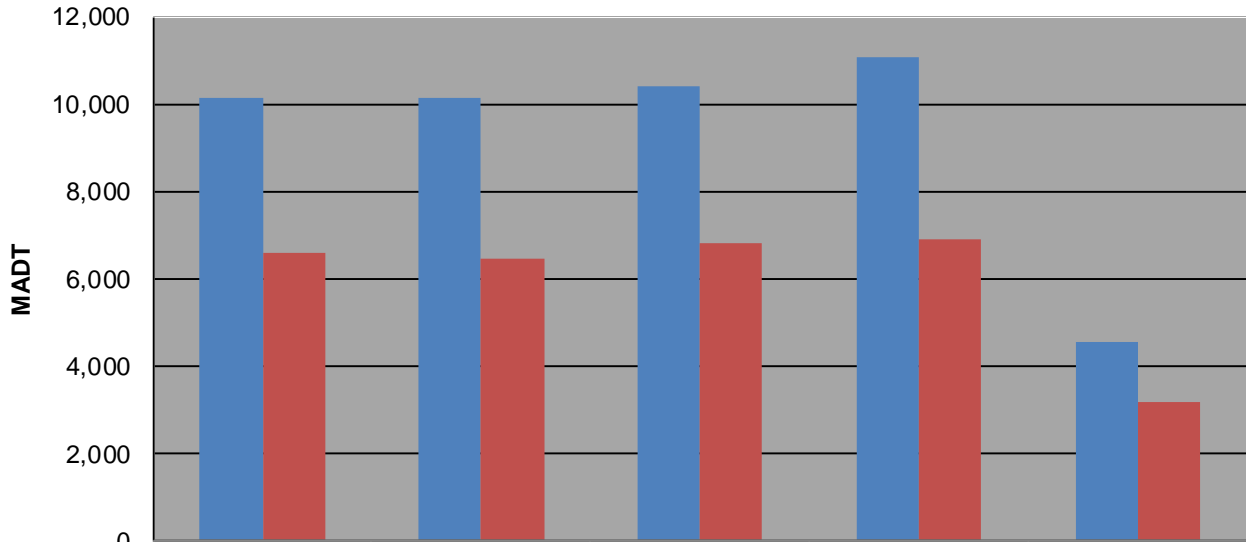
Weekday (WD)/Weekend (WE) Monthly Average Daily Traffic



	Jan	Feb	Mar	Apr	May	Jun	Jul	Aug	Sep	Oct	Nov	Dec
'10 WD	9,058	9,422	9,800	10,236	10,136	9,698	9,562	9,966	10,074	10,220	9,740	10,000
'10 WE	5,874	6,584	6,810	6,614	6,584	6,232	5,870	6,346	6,504	6,706	6,172	5,736
'11 WD	9,338	9,554	9,596	10,460	10,148	10,368	10,638	12,268	11,522	10,526	10,600	10,020
'11 WE	5,836	6,404	6,384	6,812	6,470	6,556	6,872	7,768	7,486	6,906	6,758	6,340
'12 WD	9,502	9,644	9,950	10,302	10,424	10,660	11,340	11,296	10,418	10,656	9,934	9,694
'12 WE	6,212	6,666	6,728	6,616	6,806	6,738	7,036	7,166	6,672	6,826	6,404	6,398
'13 WD	9,146	9,598	9,512	9,808	11,064	11,200	9,636	7,132	8,440	9,896	9,592	9,344
'13 WE	5,890	6,010	6,196	6,634	6,912	7,110	6,094	5,060	5,914	6,244		
'14 WD	8,452	9,182	9,162	8,150	4,564							
'14 WE	5,576	6,126	6,246	5,704	3,156							

Note: 'Weekday' defined as Monday-Friday, 'Weekend' defined as Saturday-Sunday

Weekday/Weekend Monthly Average Daily Traffic ('10-'14)



	May-10	May-11	May-12	May-13	May-14
Weekday	10,136	10,148	10,424	11,064	4,564
Weekend	6,584	6,470	6,806	6,912	3,156