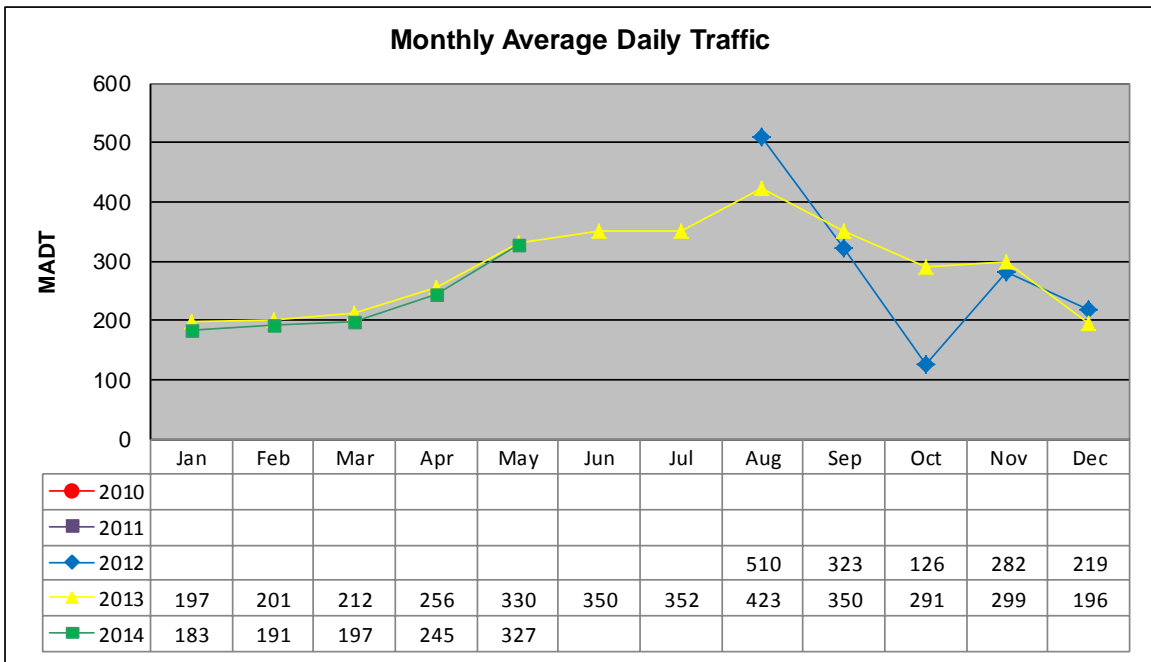


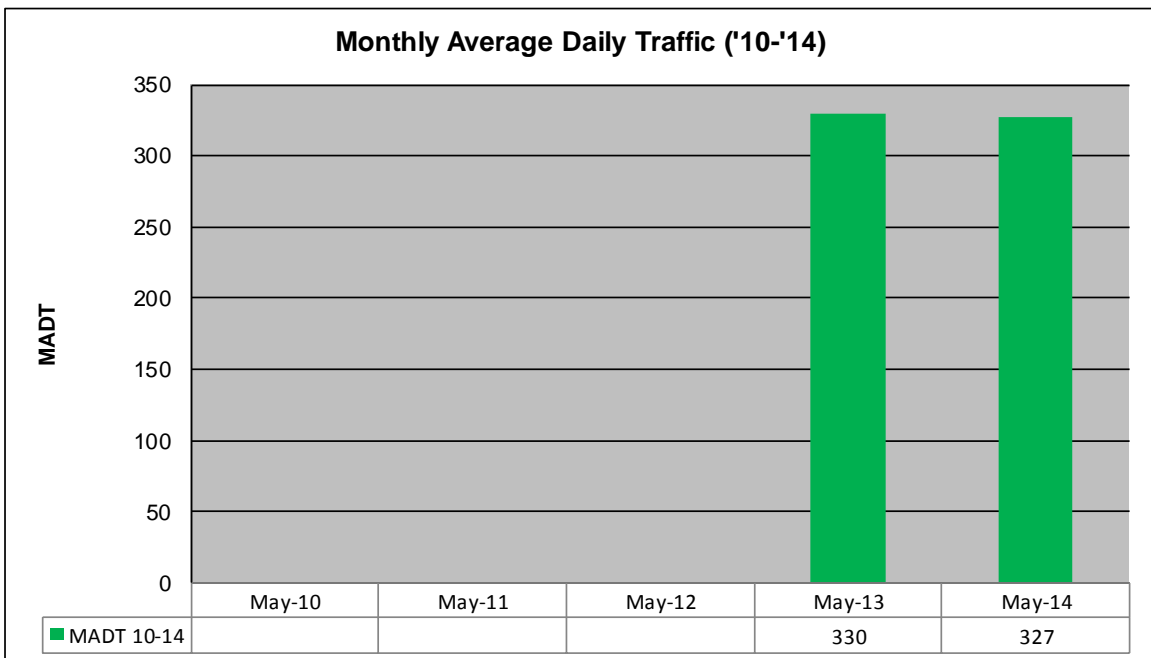
# MONTHLY REPORT, STATION NO. 231 (ATR)

## MAY 2014

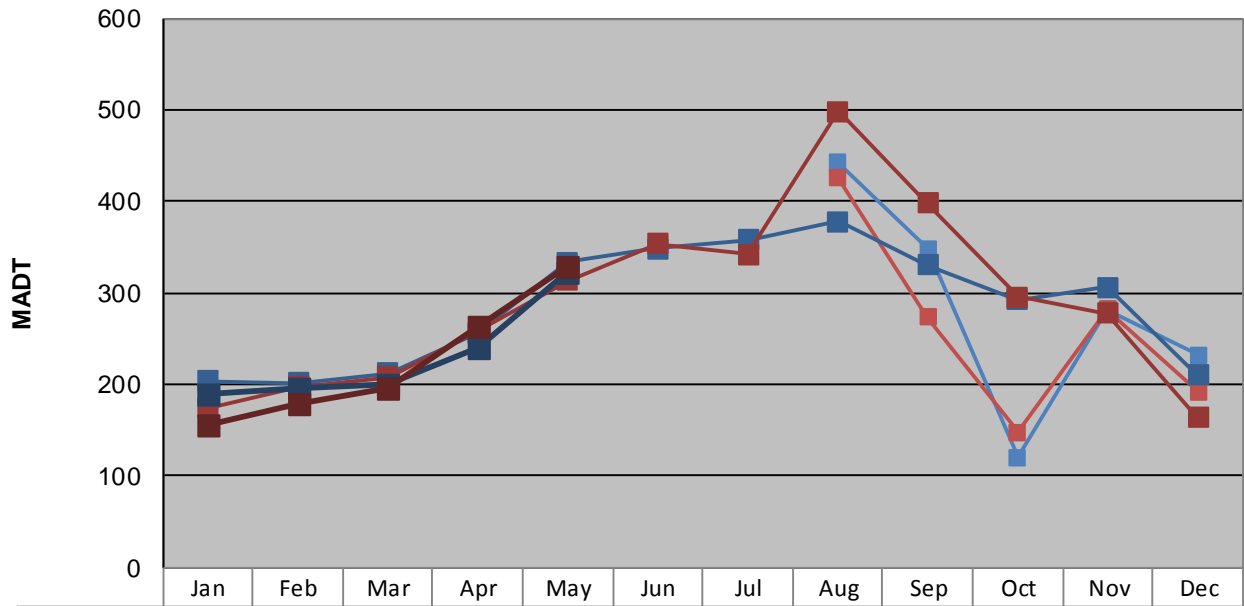
|   |                      |                                  |
|---|----------------------|----------------------------------|
| Station Measurement: VOLUME/SPEED/CLASS   |                      |                                  |
| Route: CSAH 12                            | Route Direction: E/W | Lanes: 2                         |
| County: Wadena                            | Closest City: Nimrod |                                  |
| Functional Class: Rural Major Collector   |                      |                                  |
| Location: 1.6 MI E OF CSAH18, E OF NIMROD |                      |                                  |
| Ref Post: 002+00.071                      | True Mile: 2.071     | Sequence No. 29731               |
| <b>Volume: 10,140</b>                     |                      | <b>MADT: 327</b>                 |
| <b>Weekday (M-F) MADT: 322</b>            |                      | <b>Weekend (Sa-Su) MADT: 328</b> |



Note: Began collecting data August 2012



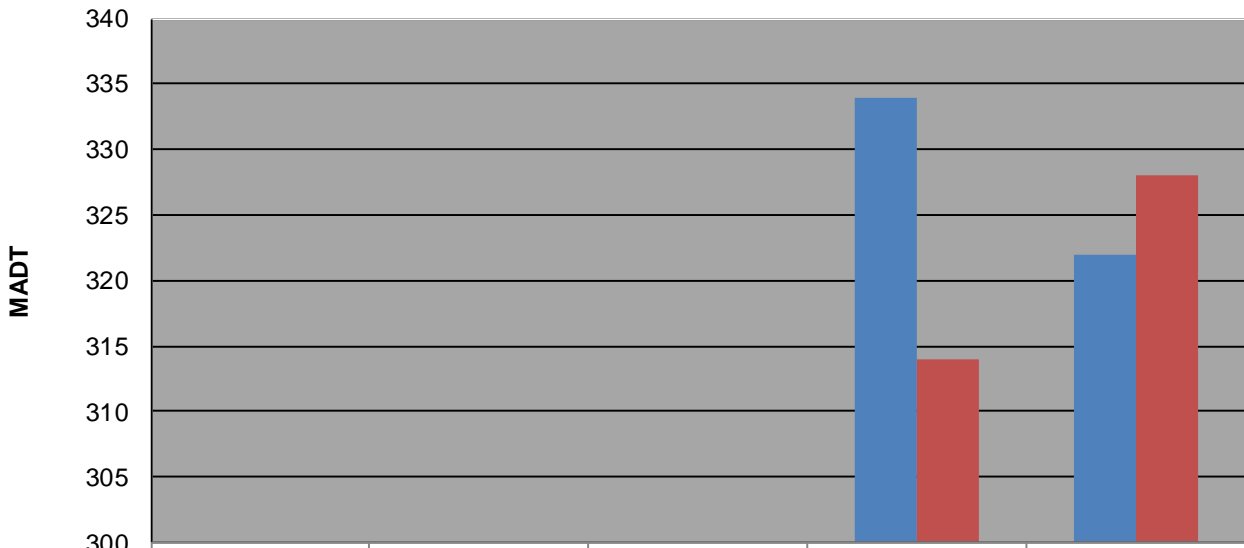
**Weekday (WD)/Weekend (WE) Monthly Average Daily Traffic**



|        |     |     |     |     |     |     |     |     |     |     |     |     |
|--------|-----|-----|-----|-----|-----|-----|-----|-----|-----|-----|-----|-----|
| '10 WD |     |     |     |     |     |     |     |     |     |     |     |     |
| '10 WE |     |     |     |     |     |     |     |     |     |     |     |     |
| '11 WD |     |     |     |     |     |     |     |     |     |     |     |     |
| '11 WE |     |     |     |     |     |     |     |     |     |     |     |     |
| '12 WD |     |     |     |     |     |     |     | 442 | 348 | 120 | 282 | 232 |
| '12 WE |     |     |     |     |     |     |     | 426 | 274 | 148 | 282 | 192 |
| '13 WD | 204 | 202 | 212 | 256 | 334 | 348 | 358 | 378 | 330 | 292 | 306 | 210 |
| '13 WE | 174 | 198 | 208 | 258 | 314 | 354 | 342 | 498 | 398 | 296 | 278 | 164 |
| '14 WD | 190 | 196 | 200 | 240 | 322 |     |     |     |     |     |     |     |
| '14 WE | 156 | 180 | 196 | 264 | 328 |     |     |     |     |     |     |     |

Note: 'Weekday' defined as Monday-Friday, 'Weekend' defined as Saturday-Sunday

**Weekday/Weekend Monthly Average Daily Traffic ('10-'14)**



|         |  |  |  |     |     |
|---------|--|--|--|-----|-----|
| Weekday |  |  |  | 334 | 322 |
| Weekend |  |  |  | 314 | 328 |