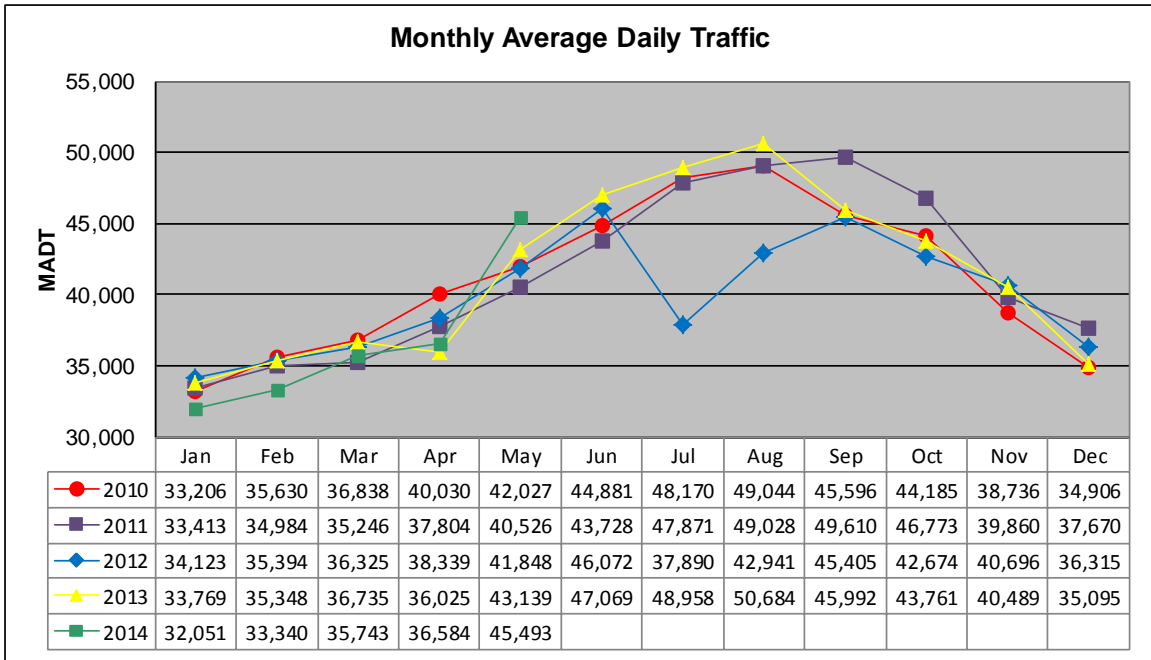


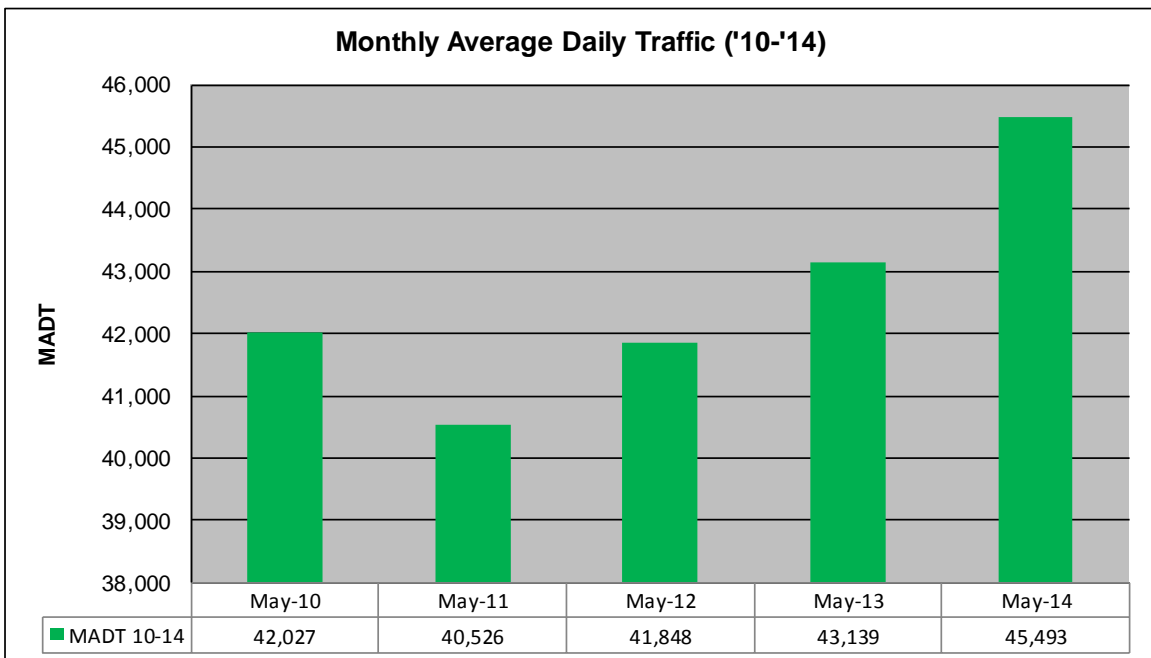
# MONTHLY REPORT, STATION NO. 191 (ATR)

## MAY 2014

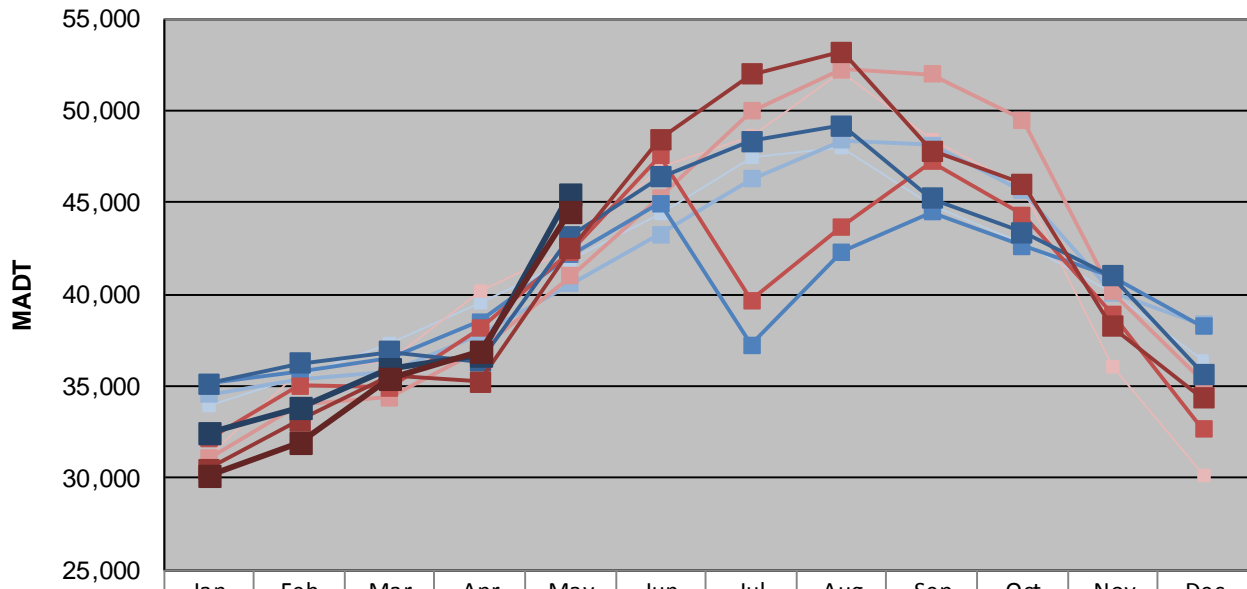
Station Measurement: VOLUME/SPEED/CLASS		
Route: I-35	Route Direction: N/S	Lanes: 4
County: Chisago		Closest City: Wyoming
Functional Class: Urban Principal Arterial - Interstate		
Location: 1.5 MI N OF CSAH22 (E VIKING BLVD), N OF WYOMING		
Ref Post: 137+00.500	True Mile: 137.519	Sequence No. 6784
<b>Volume: 1,410,282</b>		<b>MADT: 45,493</b>
<b>Weekday (M-F) MADT: 45,508</b>		<b>Weekend (Sa-Su) MADT: 44,460</b>



Note: Decrease in traffic July/August 2012 due to construction on I-35



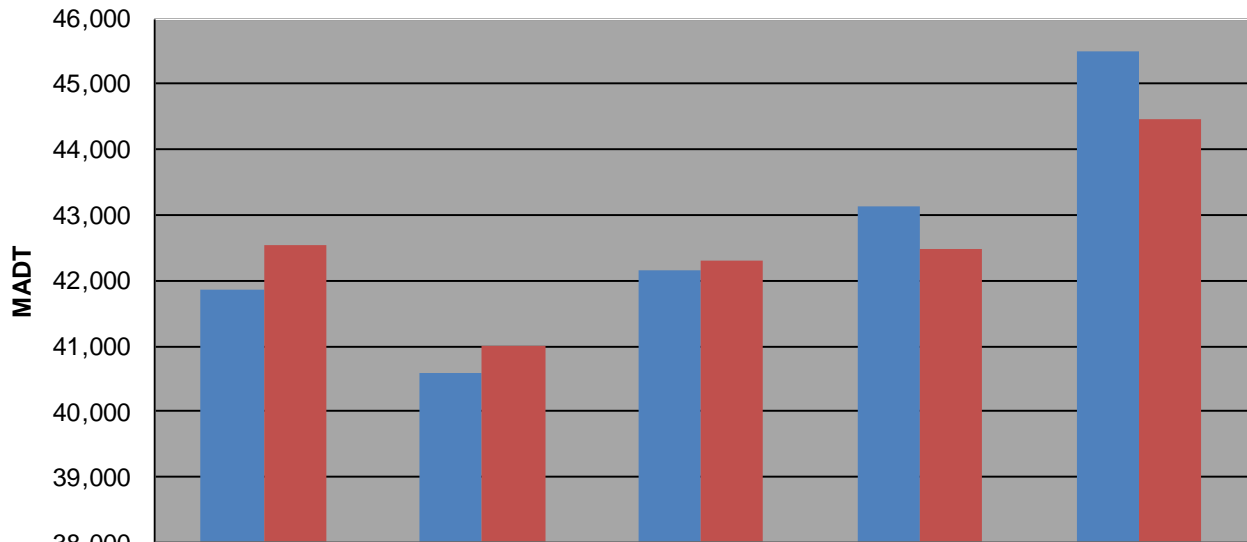
### Weekday (WD)/Weekend (WE) Monthly Average Daily Traffic



	Jan	Feb	Mar	Apr	May	Jun	Jul	Aug	Sep	Oct	Nov	Dec
'10 WD	33,906	35,560	37,304	39,560	41,864	44,442	47,458	48,024	44,800	42,780	40,084	36,388
'10 WE	31,202	35,806	36,396	40,164	42,532	46,914	48,634	52,092	48,460	45,916	36,096	30,142
'11 WD	34,574	35,384	35,844	37,830	40,574	43,288	46,268	48,396	48,140	45,638	40,124	38,356
'11 WE	31,100	33,958	34,392	36,948	41,006	45,270	49,968	52,220	51,950	49,496	40,134	35,250
'12 WD	35,140	35,780	36,526	38,518	42,154	44,976	37,236	42,290	44,486	42,606	40,974	38,230
'12 WE	32,122	35,044	34,912	38,172	42,302	47,516	39,680	43,676	47,244	44,330	38,920	32,670
'13 WD	35,138	36,238	36,870	36,368	43,134	46,384	48,314	49,166	45,222	43,358	40,996	35,654
'13 WE	30,494	33,120	35,584	35,270	42,480	48,438	51,948	53,186	47,794	46,028	38,262	34,338
'14 WD	32,448	33,878	35,994	36,676	45,508							
'14 WE	30,104	31,994	35,428	36,938	44,460							

Note: 'Weekday' defined as Monday-Friday, 'Weekend' defined as Saturday-Sunday

### Weekday/Weekend Monthly Average Daily Traffic ('10-'14)



	May-10	May-11	May-12	May-13	May-14
Weekday	41,864	40,574	42,154	43,134	45,508
Weekend	42,532	41,006	42,302	42,480	44,460