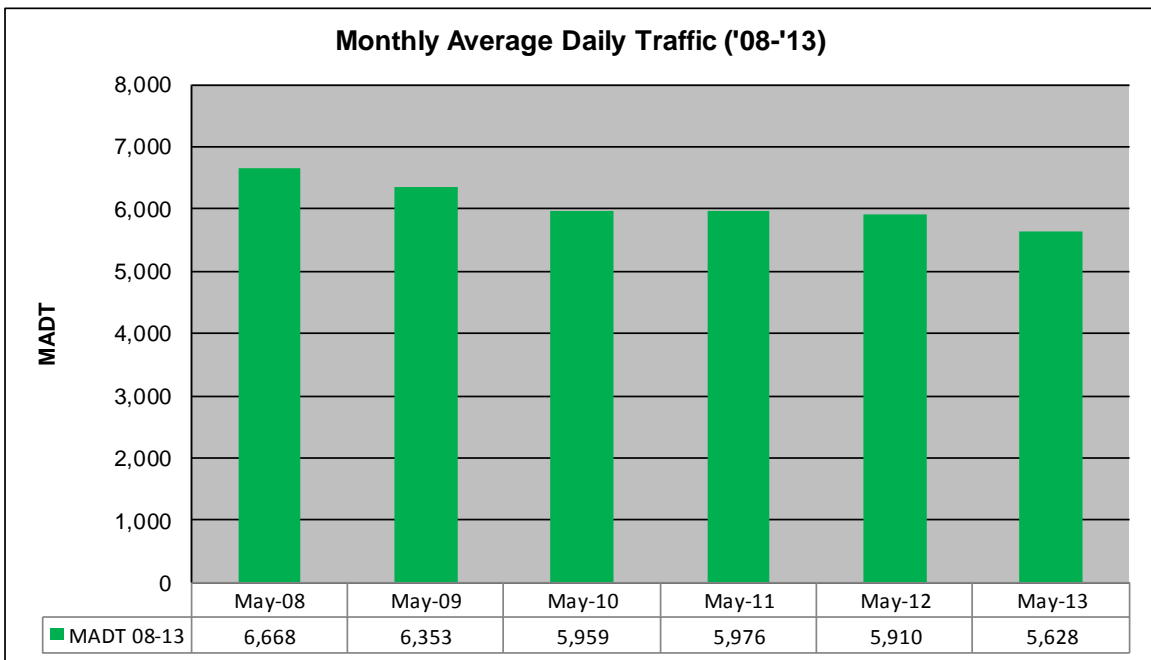
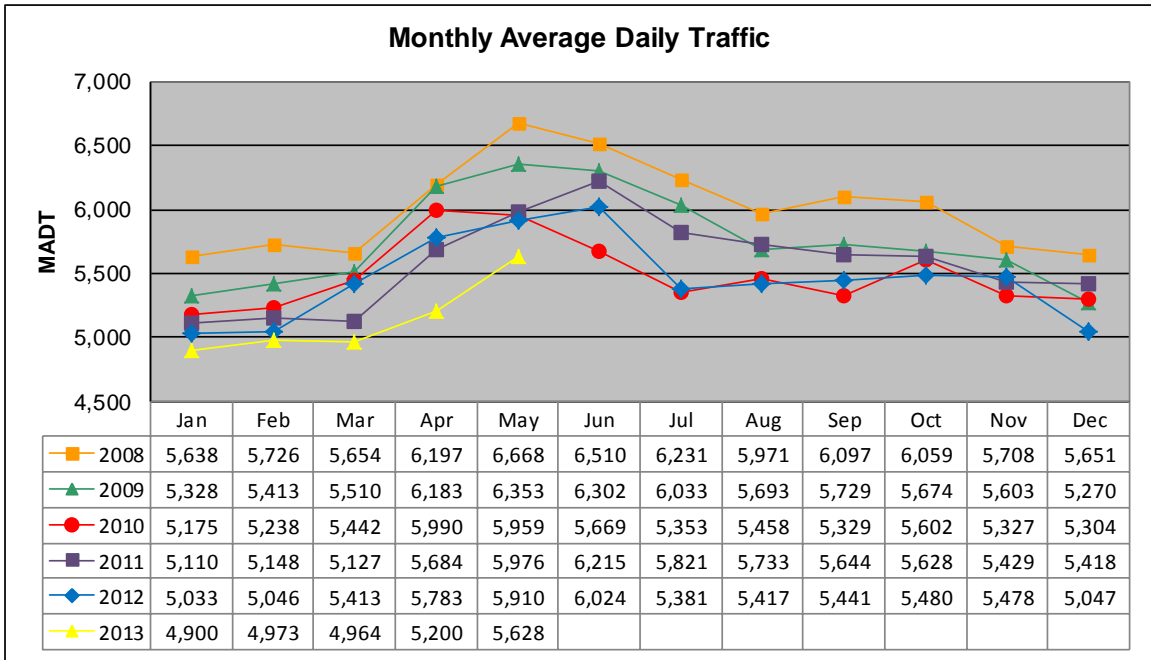


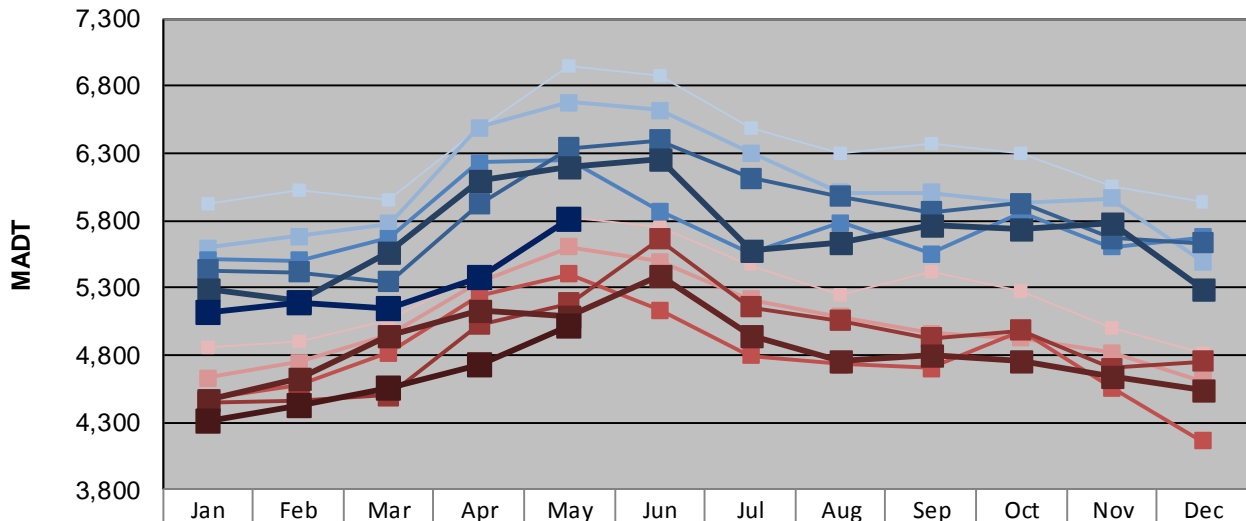
MONTHLY REPORT, STATION NO. 460 (ATR)

MAY 2013

Station Measurement: VOLUME		
Route: MSAS 128	Route Direction: E/W	Lanes: 2
County: Dakota		Closest City: Hastings
Functional Class: Urban Collector		
Location: W OF MSAS122 (PINE ST) IN HASTINGS		
Ref Post: 000+00.840	True Mile: 0.84	Sequence No. 9909
Volume: 174,477		MADT: 5,628
Weekday (M-F) MADT: 5,810		Weekend (Sa-Su) MADT: 5,012



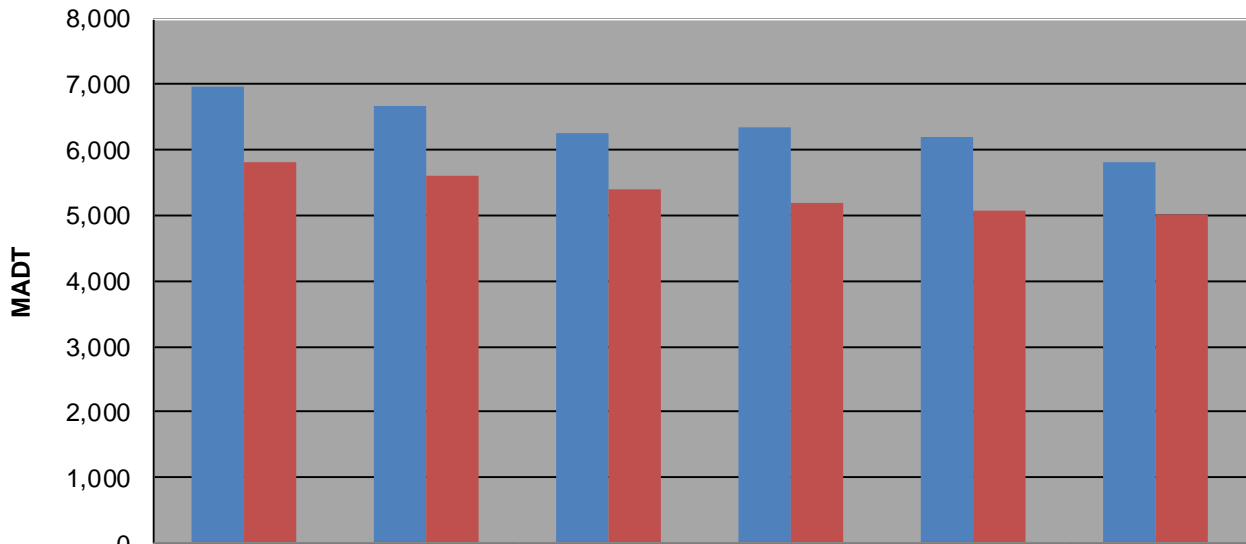
Weekday (WD)/Weekend (WE) Monthly Average Daily Traffic



	Jan	Feb	Mar	Apr	May	Jun	Jul	Aug	Sep	Oct	Nov	Dec
'08 WD	5,928	6,018	5,956	6,486	6,954	6,870	6,482	6,296	6,376	6,300	6,060	5,940
'08 WE	4,856	4,898	5,056	5,408	5,826	5,748	5,466	5,248	5,422	5,274	5,002	4,820
'09 WD	5,596	5,682	5,776	6,488	6,674	6,622	6,300	6,006	6,006	5,928	5,966	5,498
'09 WE	4,628	4,746	4,944	5,346	5,604	5,498	5,212	5,082	4,960	4,926	4,816	4,606
'10 WD	5,508	5,504	5,670	6,232	6,248	5,870	5,550	5,786	5,552	5,854	5,604	5,672
'10 WE	4,478	4,574	4,814	5,242	5,402	5,132	4,798	4,730	4,698	4,982	4,556	4,158
'11 WD	5,432	5,412	5,342	5,918	6,336	6,398	6,116	5,980	5,866	5,930	5,670	5,632
'11 WE	4,448	4,460	4,496	5,028	5,186	5,664	5,158	5,056	4,924	4,986	4,704	4,754
'12 WD	5,294	5,200	5,570	6,096	6,198	6,258	5,574	5,630	5,758	5,738	5,784	5,292
'12 WE	4,468	4,630	4,950	5,128	5,088	5,384	4,938	4,760	4,804	4,762	4,640	4,540
'13 WD	5,116	5,192	5,144	5,382	5,810							
'13 WE	4,304	4,428	4,554	4,726	5,012							

Note: 'Weekday' defined as Monday-Friday, 'Weekend' defined as Saturday-Sunday

Weekday/Weekend Monthly Average Daily Traffic ('08-'13)



	May-08	May-09	May-10	May-11	May-12	May-13
Weekday	6,954	6,674	6,248	6,336	6,198	5,810
Weekend	5,826	5,604	5,402	5,186	5,088	5,012