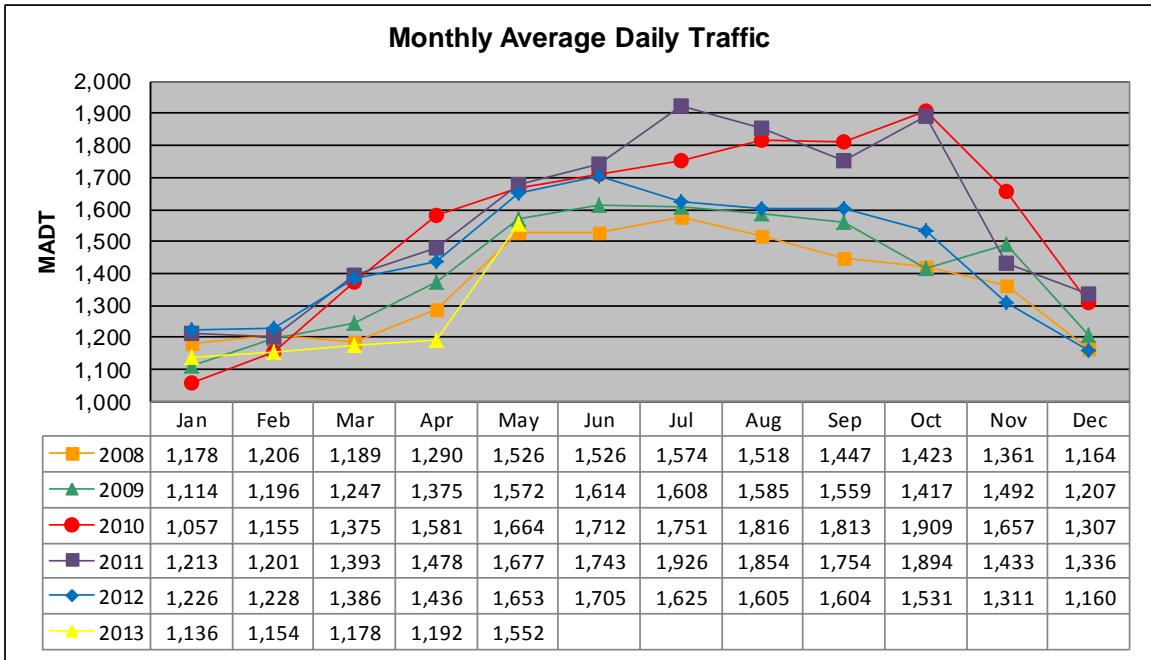


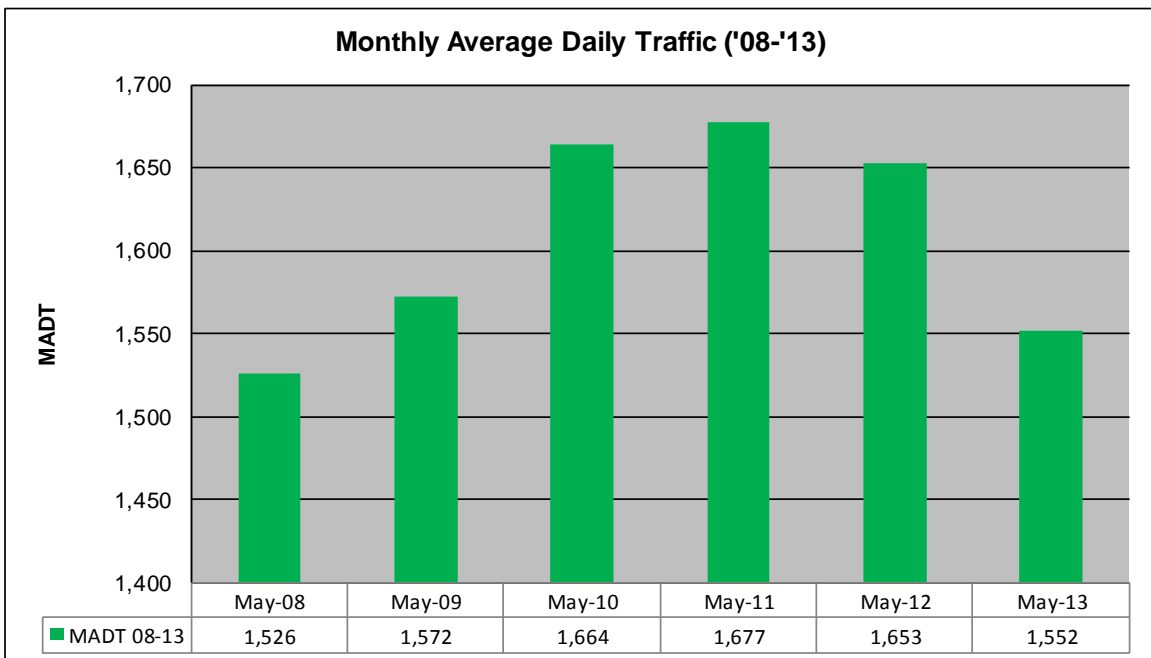
MONTHLY REPORT, STATION NO. 199 (ATR)

MAY 2013

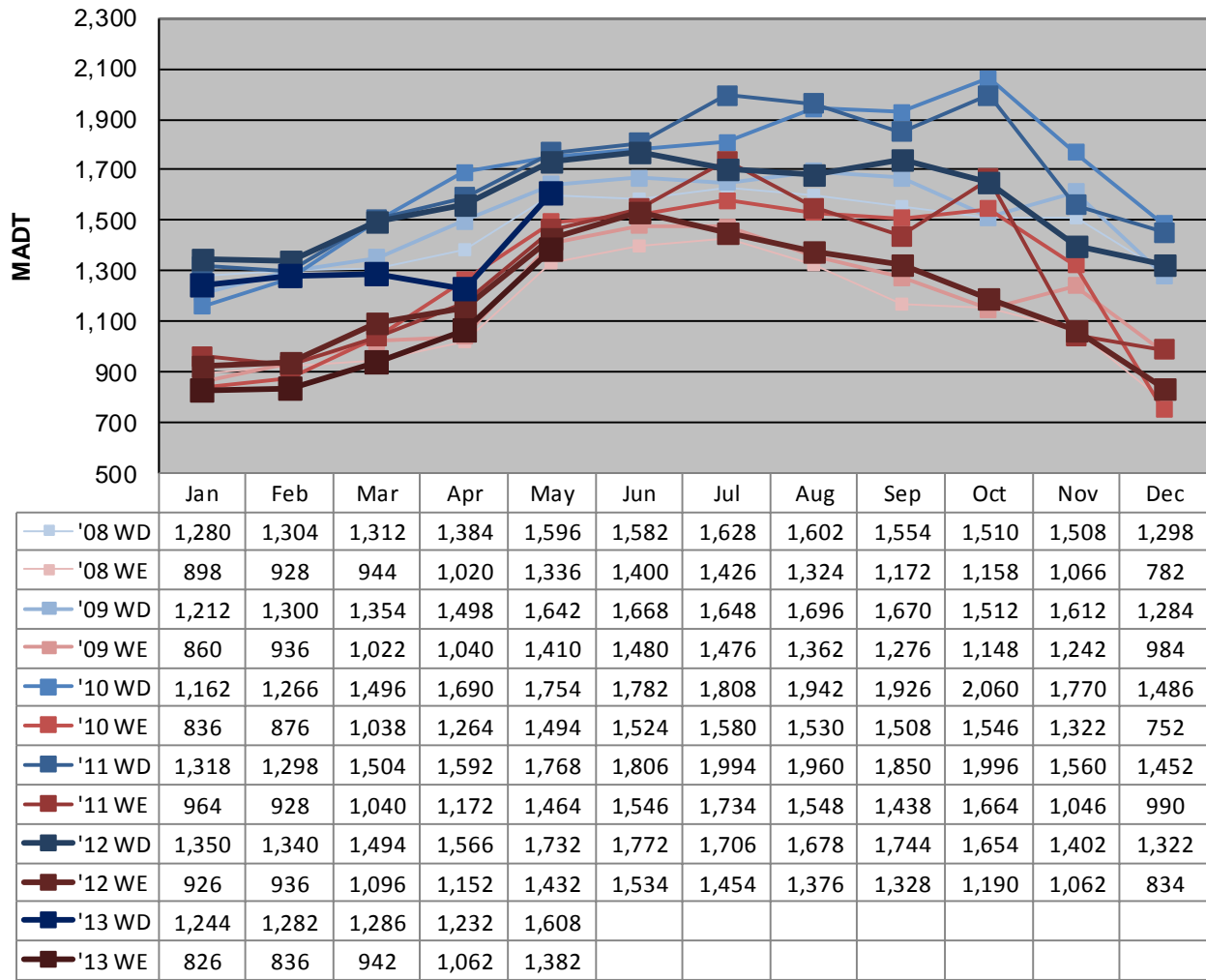
Station Measurement: VOLUME/SPEED/CLASS		
Route: TH 75	Route Direction: N/S	Lanes: 2
County: Pipestone		Closest City: Pipestone
Functional Class: Rural Minor Arterial		
Location: .5 MI S OF CSAH7 (151ST ST), N OF PIPESTONE		
Ref Post: 040+00.540	True Mile: 39.447	Sequence No. 6745
Volume: 48,118		MADT: 1,552
Weekday (M-F) MADT: 1,608		Weekend (Sa-Su) MADT: 1,382



Note: Increase in traffic October 2010 and October 2011 due to hunting openers



Weekday (WD)/Weekend (WE) Monthly Average Daily Traffic



Note: 'Weekday' defined as Monday-Friday, 'Weekend' defined as Saturday-Sunday

Weekday/Weekend Monthly Average Daily Traffic ('08-'13)

