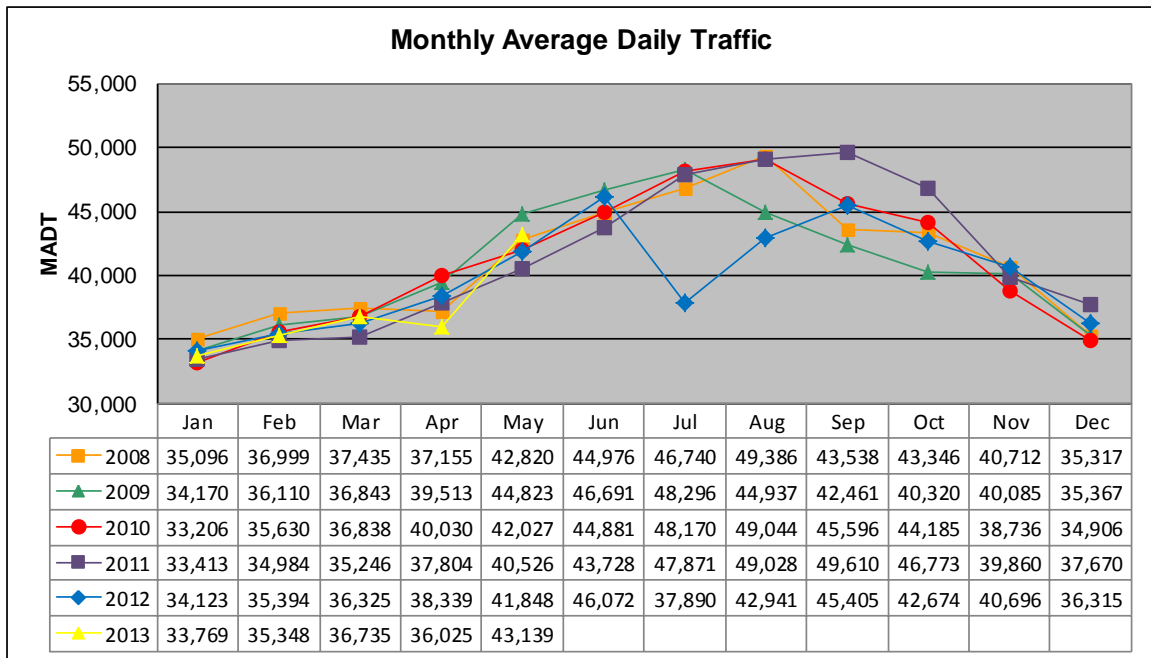


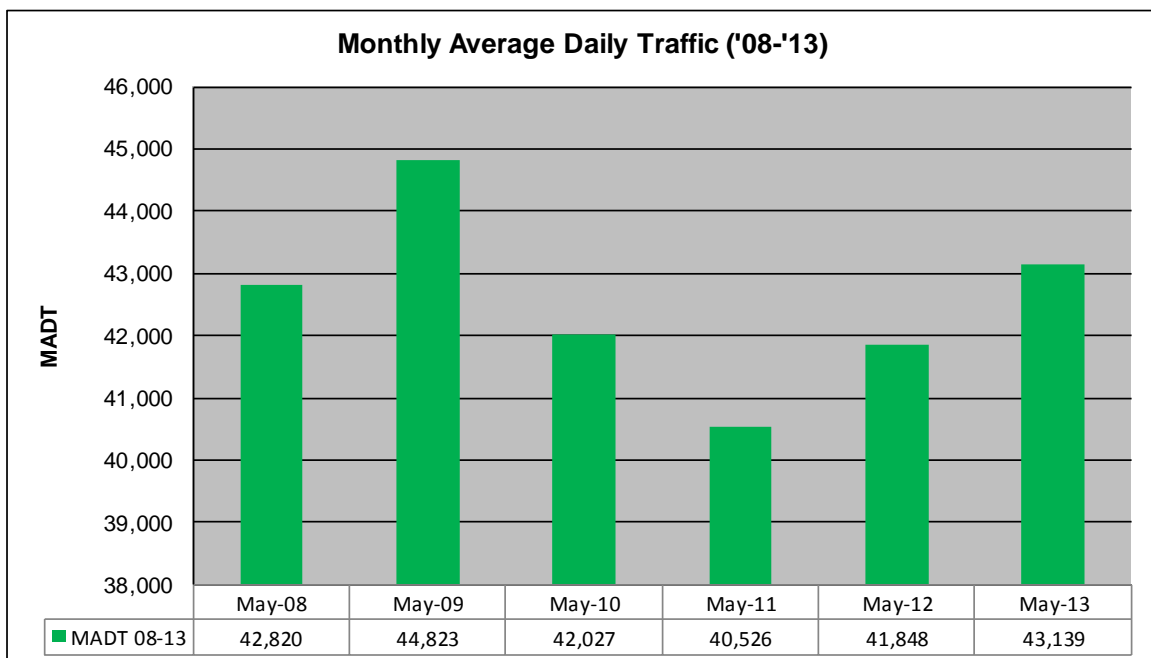
MONTHLY REPORT, STATION NO. 191 (ATR)

MAY 2013

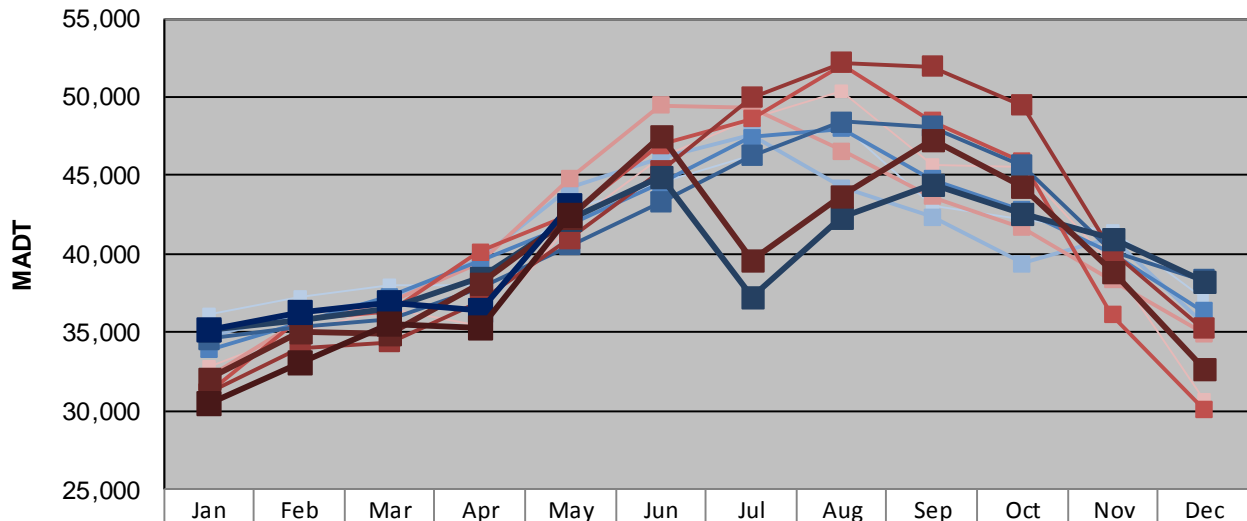
| | | |
|--|----------------------|-------------------------------------|
| Station Measurement: VOLUME/SPEED/CLASS | | |
| Route: I-35 | Route Direction: N/S | Lanes: 4 |
| County: Chisago | | Closest City: Wyoming |
| Functional Class: Urban Principal Arterial - Interstate | | |
| Location: 1.5 MI N OF CSAH22 (E VIKING BLVD), N OF WYOMING | | |
| Ref Post: 137+00.500 | True Mile: 137.519 | Sequence No. 6784 |
| Volume: 1,337,312 | | MADT: 43,139 |
| Weekday (M-F) MADT: 43,134 | | Weekend (Sa-Su) MADT: 42,480 |



Note: Decrease in traffic August to October 2009 and July/August 2012 due to construction on I-35



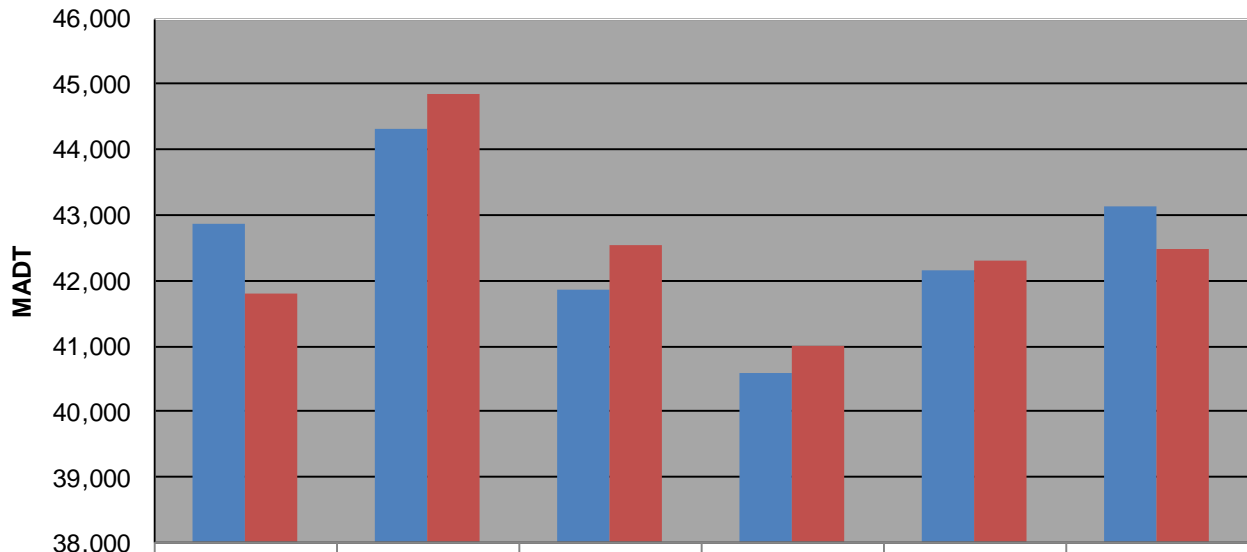
Weekday (WD)/Weekend (WE) Monthly Average Daily Traffic



| | Jan | Feb | Mar | Apr | May | Jun | Jul | Aug | Sep | Oct | Nov | Dec |
|--------|--------|--------|--------|--------|--------|--------|--------|--------|--------|--------|--------|--------|
| '08 WD | 36,174 | 37,310 | 37,978 | 37,954 | 42,862 | 44,550 | 46,324 | 48,286 | 43,060 | 42,228 | 41,452 | 37,160 |
| '08 WE | 32,806 | 35,034 | 36,576 | 35,402 | 41,802 | 46,142 | 48,592 | 50,420 | 45,624 | 45,494 | 39,230 | 30,676 |
| '09 WD | 34,726 | 36,240 | 37,104 | 39,690 | 44,308 | 46,084 | 47,636 | 44,238 | 42,390 | 39,386 | 41,046 | 35,560 |
| '09 WE | 32,132 | 35,784 | 36,980 | 39,388 | 44,838 | 49,454 | 49,266 | 46,584 | 43,640 | 41,668 | 38,348 | 34,962 |
| '10 WD | 33,906 | 35,560 | 37,304 | 39,560 | 41,864 | 44,442 | 47,458 | 48,024 | 44,800 | 42,780 | 40,084 | 36,388 |
| '10 WE | 31,202 | 35,806 | 36,396 | 40,164 | 42,532 | 46,914 | 48,634 | 52,092 | 48,460 | 45,916 | 36,096 | 30,142 |
| '11 WD | 34,574 | 35,384 | 35,844 | 37,830 | 40,574 | 43,288 | 46,268 | 48,396 | 48,140 | 45,638 | 40,124 | 38,356 |
| '11 WE | 31,100 | 33,958 | 34,392 | 36,948 | 41,006 | 45,270 | 49,968 | 52,220 | 51,950 | 49,496 | 40,134 | 35,250 |
| '12 WD | 35,140 | 35,780 | 36,526 | 38,518 | 42,154 | 44,976 | 37,236 | 42,290 | 44,486 | 42,606 | 40,974 | 38,230 |
| '12 WE | 32,122 | 35,044 | 34,912 | 38,172 | 42,302 | 47,516 | 39,680 | 43,676 | 47,244 | 44,330 | 38,920 | 32,670 |
| '13 WD | 35,138 | 36,238 | 36,870 | 36,368 | 43,134 | | | | | | | |
| '13 WE | 30,494 | 33,120 | 35,584 | 35,270 | 42,480 | | | | | | | |

Note: 'Weekday' defined as Monday-Friday, 'Weekend' defined as Saturday-Sunday

Weekday/Weekend Monthly Average Daily Traffic ('08-'13)



| | May-08 | May-09 | May-10 | May-11 | May-12 | May-13 |
|---------|--------|--------|--------|--------|--------|--------|
| Weekday | 42,862 | 44,308 | 41,864 | 40,574 | 42,154 | 43,134 |
| Weekend | 41,802 | 44,838 | 42,532 | 41,006 | 42,302 | 42,480 |